

Daily Direct Steer and Heifer Slaughter Cattle Summary

For Trade on:

Thursday, September 18, 2025

LM_CT100	5-Area	LM_CT109	
Neg. Cash Volume:	28,621	Dressed Formula Vol:	58,447
Live Steer Avg:	\$236.79	Steer/Heifer Avg:	\$383.08
Live Heifer Avg:	\$237.29	Dressed Neg. Grid Vol:	3,229
Dressed Steer Avg:	\$370.83	Steer/Heifer Avg:	\$388.98
Dressed Heifer Avg:	\$371.37	TOTAL VOLUME:	90,297
LM_CT106	TOTAL WK TO DATE VOLUME:		212,450
Committed:	52,559	Delivered:	52,197

LM_CT118	TX-OK-NM	LM_CT109	
Neg. Cash Volume:	328	Dressed Formula Vol:	19,424
Live Steer Avg:	\$240.00	Steer/Heifer Avg:	\$380.61
Live Heifer Avg:	N/A	Dressed Neg. Grid Vol:	137
Dressed Steer Avg:	N/A	Steer/Heifer Avg:	\$384.38
Dressed Heifer Avg:	N/A	TOTAL VOLUME:	19,889
LM_CT106	TOTAL WK TO DATE VOLUME:		55,612
Committed:	9,669	Delivered:	6,294

LM_CT121	KANSAS	LM_CT109	
Neg. Cash Volume:	1,159	Dressed Formula Vol:	14,331
Live Steer Avg:	\$240.00	Steer/Heifer Avg:	\$383.42
Live Heifer Avg:	N/A	Dressed Neg. Grid Vol:	80
Dressed Steer Avg:	\$370.00	Steer/Heifer Avg:	\$392.59
Dressed Heifer Avg:	N/A	TOTAL VOLUME:	14,411
LM_CT106	TOTAL WK TO DATE VOLUME:		60,628
Committed:	8,336	Delivered:	18,824

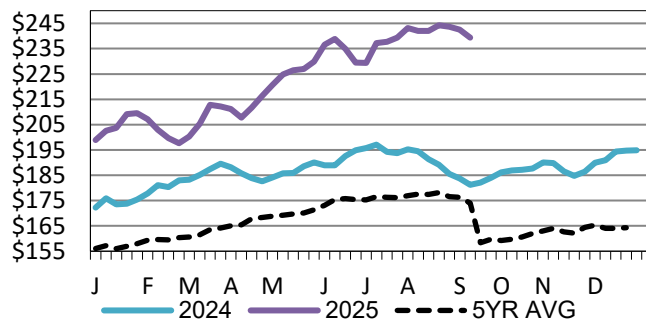
LM_CT124	NEBRASKA	LM_CT109	
Neg. Cash Volume:	14,323	Dressed Formula Vol:	15,446
Live Steer Avg:	\$236.19	Steer/Heifer Avg:	\$386.82
Live Heifer Avg:	\$237.00	Dressed Neg. Grid Vol:	1,331
Dressed Steer Avg:	\$370.76	Steer/Heifer Avg:	\$389.66
Dressed Heifer Avg:	\$370.00	TOTAL VOLUME:	31,100
LM_CT106	TOTAL WK TO DATE VOLUME:		53,481
Committed:	18,536	Delivered:	19,501

LM_CT134	COLORADO	LM_CT109	
Neg. Cash Volume:	0	Dressed Formula Vol:	7,134
Live Steer Avg:	N/A	Steer/Heifer Avg:	\$380.77
Live Heifer Avg:	N/A	Dressed Neg. Grid Vol:	0
Dressed Steer Avg:	N/A	Steer/Heifer Avg:	N/A
Dressed Heifer Avg:	N/A	TOTAL VOLUME:	7,134
LM_CT106	TOTAL WK TO DATE VOLUME:		15,832
Committed:	2,764	Delivered:	4,349

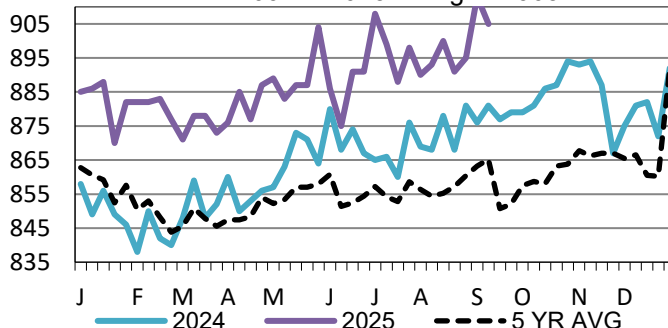
LM_CT137	IA-MN	LM_CT109	
Neg. Cash Volume:	12,811	Dressed Formula Vol:	2,452
Live Steer Avg:	\$236.92	Steer/Heifer Avg:	\$384.49
Live Heifer Avg:	\$236.52	Dressed Neg. Grid Vol:	1,681
Dressed Steer Avg:	\$371.95	Steer/Heifer Avg:	\$388.98
Dressed Heifer Avg:	\$374.47	TOTAL VOLUME:	16,944
LM_CT106	TOTAL WK TO DATE VOLUME:		27,625
Committed:	13,254	Delivered:	3,229

On Thursday, negotiated cash trade was mostly inactive on light to moderate demand in the Texas Panhandle. The last established market in the Texas Panhandle was last week at 240.00. Negotiated cash trade was light on moderate demand in Kansas. Compared to last week, live purchases were steady at 240.00. Negotiated cash trade was moderate on moderate demand in Nebraska and the Western Cornbelt. Compared to last week in Nebraska, live purchases were 2.00 lower from 236.00-238.00 and dressed purchases were 5.00-7.00 lower at mostly 370.00. Compared to last week in the Western Cornbelt, live purchases were 1.00-3.00 lower from 236.00-237.00, mostly 237.00. A few dressed purchases ranged from 368.00-376.00, but not enough for an adequate market test. The last established dressed market in the Western Cornbelt was last week from 375.00-378.00, mostly 375.00.

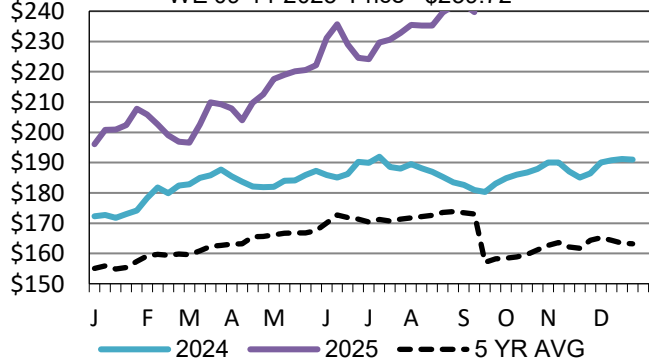
5-Area Live Steer Weighted Average
WE 09-14-2025 Price = \$239.33



TX-OK-NM Formula Carcass Weights
WE 09-14-2025 Weight = 905 lbs



Kansas Weekly Live Steer Weighted Average
WE 09-14-2025 Price = \$239.72



USDA Livestock, Poultry and Grain Market News

Kansas City, MO

Phone: 816-676-7000

stjoe.lpgmn@ams.usda.gov