



National Monthly Grass Fed Lamb and Goat Report

Agricultural Marketing Service
Livestock and Poultry Market News

For the Month of November
December 4, 2023

Negotiated Lamb - Wholesale

Item Description	(\$/lb)	Wtg Avg
Chops		
Loin		
Rib		
Roasts		
Rack		
Shoulder		
Leg, Bone-In		
Leg, Boneless		
Shank		
Ground Lamb		
Stew Meat		

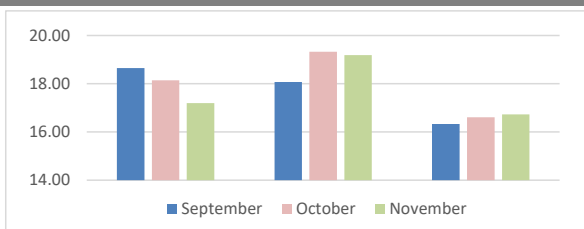
Lamb - Direct to Consumer (Retail)

Item Description	(\$/lb)	Wtg Avg
Chops		
Loin	9.00 - 46.66	23.43
Rib	4.48 - 33.01	17.20
Roasts		
Rack	14.98 - 49.33	28.92
Sirloin	11.98 - 32.95	17.86
Shoulder	9.98 - 28.16	17.33
Leg, Bone-In	11.00 - 29.44	19.19
Leg, Boneless	10.98 - 30.21	17.91
Shank	3.48 - 23.40	11.95
Ground Lamb	9.98 - 26.95	16.73
Stew Meat	4.98 - 26.95	17.85

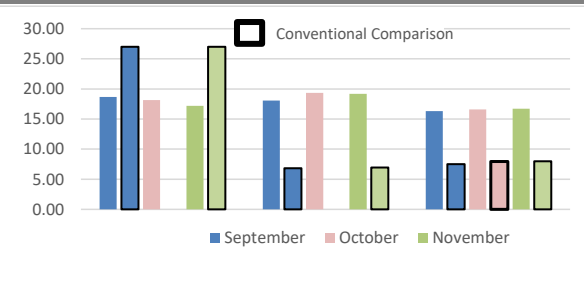
Lamb - Direct to Consumer Carcass³

Item Description	(\$/lb)	Wtg Avg
Whole Carcass	5.00 - 22.22	10.11
Half Carcass	6.00 - 17.00	10.66

Grass Fed Lamb Prices



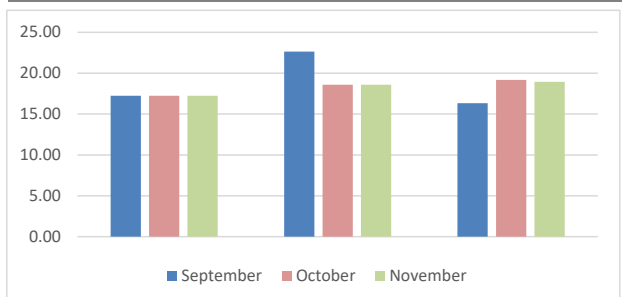
Grass Fed Lamb v. Conventional Commodity⁵



Goat - Direct to Consumer (Retail)

Item Description	(\$/lb)	Wtg Avg
Steaks		
Shank	5.95 - 25.79	16.15
Loin	16.00 - 24.99	18.95
Rib	9.99 - 19.99	14.99
Sirloin	19.99 - 19.99	14.99
Leg, Bone-In	10.95 - 30.60	20.50
Ground Goat	11.00 - 35.03	19.00
Stew Meat	12.00 - 28.22	17.57

Grass Fed Goat Prices



Goat - Direct to Consumer Carcass

Item Description	(\$/lb)	Wtg Avg
Whole Carcass	6.00 - 21.00	11.49
Half Carcass		

Direct to Consumer Carcass Fees⁴

Item Description	Each	Wtg Avg
Deposit		
Whole Carcass	100.00 - 135.00	115.00
Half Carcass	50.00 - 100.00	77.50
Processing		
Whole Carcass		
Half Carcass		

Cost of Production⁶

NASS 17 State \$/AUM Grazing Fees 2021 Survey	21.20
Grazing Feed Estimates Based on Grass Hay Prices	
Good Tallgrass Pasture \$/AUM	22.00
Fair to Good Pasture \$/AUM	16.50

1. Prices in dollars per pound unless otherwise noted 2. Data for this report is derived from a sample of producers and retailers 3. Hanging weight price without processing fees 4. Fees are paid by consumers to producers directly for both grass fed lamb and goat 5. Source for Conventional Commodity prices: USDA-AMS Livestock, Poultry, and Grain Market News "National Retail Report-Lamb/Veal" 6. Animal Unit Months (AUM) conversion for goat and sheep can be found at <https://www.extension.iastate.edu/agdm/wholefarm/html/c2-23.html>