



ISSN: 1949-1557

Released November 21, 2022, by the National Agricultural Statistics Service (NASS), Agricultural Statistics Board, United States Department of Agriculture (USDA).

## October Milk Production up 1.4 Percent

**Milk production** in the 24 major States during October totaled 18.1 billion pounds, up 1.4 percent from October 2021. September revised production, at 17.5 billion pounds, was up 1.5 percent from September 2021. The September revision represented a decrease of 13 million pounds or 0.1 percent from last month's preliminary production estimate.

**Production per cow** in the 24 major States averaged 2,021 pounds for October, 18 pounds above October 2021.

**The number of milk cows** on farms in the 24 major States was 8.93 million head, 42,000 head more than October 2021, and 1,000 head more than September 2022.

## October Milk Production in the United States up 1.2 Percent

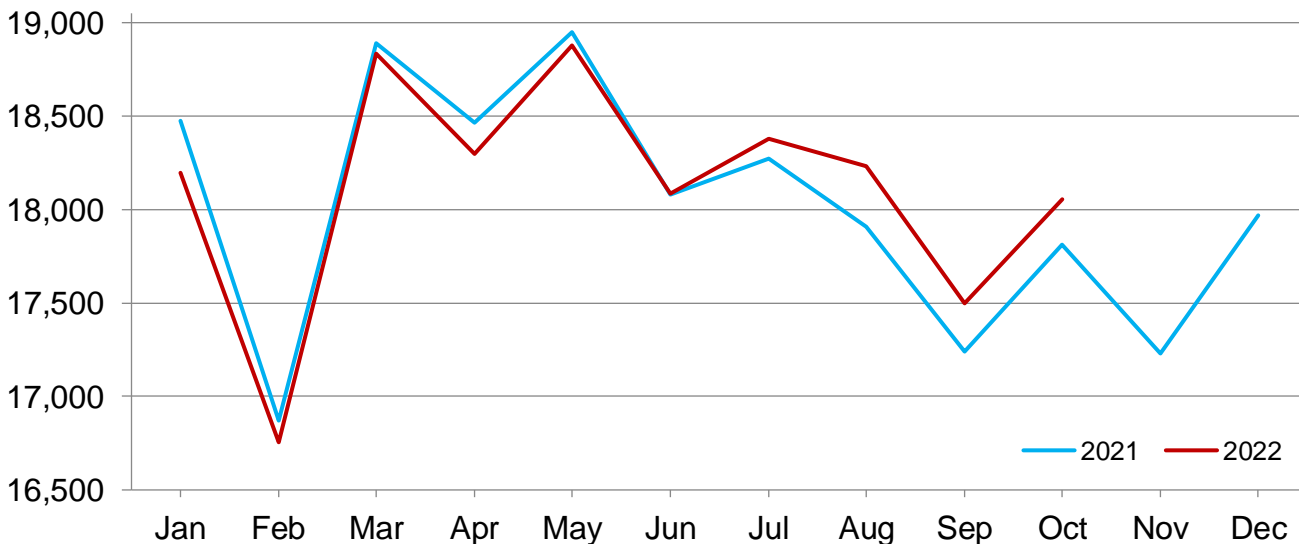
**Milk production** in the United States during October totaled 18.9 billion pounds, up 1.2 percent from October 2021.

**Production per cow** in the United States averaged 2,001 pounds for October, 17 pounds above October 2021.

**The number of milk cows** on farms in the United States was 9.42 million head, 31,000 head more than October 2021, and 1,000 head more than September 2022.

## Monthly Milk Production - 24 Selected States

Million pounds



## Milk Cows and Production by Quarter – United States: 2021-2022

[May not add due to rounding. Blank data cells indicate estimation period has not yet begun]

Quarter	Milk cows <sup>1</sup>		Milk per cow <sup>2</sup>		Milk production <sup>2</sup>		Change from 2021
	2021	2022	2021	2022	2021	2022	
	(1,000 head)	(1,000 head)	(pounds)	(pounds)	(million pounds)	(million pounds)	(percent)
January-March .....	9,466	9,384	6,005	6,000	56,847	56,305	-1.0
April-June .....	9,503	9,413	6,119	6,145	58,147	57,845	-0.5
July-September .....	9,442	9,415	5,914	6,001	55,836	56,499	1.2
October-December .....	9,381		5,909		55,428		
Annual .....	9,448		23,948		226,258		

<sup>1</sup> Includes dry cows. Excludes heifers not yet fresh.

<sup>2</sup> Excludes milk sucked by calves.

## Milk Cows and Production by Month – 24 Selected States: 2021-2022

[May not add due to rounding. Blank data cells indicate estimation period has not yet begun]

Month	Milk cows <sup>1</sup>		Milk per cow <sup>2</sup>		Milk production <sup>2</sup>		Change from 2021
	2021	2022	2021	2022	2021	2022	
	(1,000 head)	(1,000 head)	(pounds)	(pounds)	(million pounds)	(million pounds)	(percent)
January .....	8,938	8,874	2,067	2,051	18,477	18,198	-1.5
February .....	8,954	8,887	1,884	1,885	16,871	16,755	-0.7
March .....	8,970	8,909	2,106	2,114	18,888	18,835	-0.3
April .....	8,987	8,910	2,055	2,053	18,467	18,296	-0.9
May .....	8,996	8,922	2,106	2,116	18,949	18,878	-0.4
June .....	8,991	8,916	2,011	2,028	18,078	18,083	(Z)
July .....	8,983	8,920	2,034	2,060	18,272	18,379	0.6
August .....	8,939	8,930	2,004	2,042	17,910	18,231	1.8
September .....	8,909	8,933	1,935	1,959	17,239	17,497	1.5
October .....	8,892	8,934	2,003	2,021	17,812	18,055	1.4
November .....	8,888		1,939		17,232		
December .....	8,880		2,024		17,971		
Annual .....	8,944		24,169		216,166		

(Z) Less than half of the unit shown.

<sup>1</sup> Includes dry cows. Excludes heifers not yet fresh.

<sup>2</sup> Excludes milk sucked by calves.

## Estimated Milk Cows and Production by Month – United States: 2021-2022

[May not add due to rounding. Blank data cells indicate estimation period has not yet begun]

Month	Milk cows <sup>1</sup>		Milk per cow <sup>2</sup>		Milk production <sup>2</sup>		Change from 2021
	2021	2022	2021	2022	2021	2022	
	(1,000 head)	(1,000 head)	(pounds)	(pounds)	(million pounds)	(million pounds)	(percent)
January .....	9,450	9,367	2,049	2,034	19,365	19,050	-1.6
February .....	9,466	9,380	1,868	1,870	17,685	17,540	-0.8
March .....	9,482	9,404	2,088	2,096	19,797	19,715	-0.4
April .....	9,500	9,405	2,037	2,037	19,350	19,155	-1.0
May .....	9,507	9,419	2,088	2,098	19,855	19,763	-0.5
June .....	9,501	9,415	1,994	2,010	18,942	18,927	-0.1
July .....	9,483	9,414	2,014	2,039	19,097	19,195	0.5
August .....	9,438	9,413	1,984	2,022	18,721	19,035	1.7
September .....	9,405	9,417	1,916	1,940	18,018	18,269	1.4
October .....	9,387	9,418	1,984	2,001	18,623	18,850	1.2
November .....	9,382		1,920		18,015		
December .....	9,373		2,005		18,790		
Annual .....	9,448		23,948		226,258		

<sup>1</sup> Includes dry cows. Excludes heifers not yet fresh.

<sup>2</sup> Excludes milk sucked by calves.

## Milk Cows and Production – 24 Selected States: October 2021 and 2022

[May not add due to rounding]

State	Milk cows <sup>1</sup>		Milk per cow <sup>2</sup>		Milk production <sup>2</sup>		Change from 2021
	2021	2022	2021	2022	2021	2022	
	(1,000 head)	(1,000 head)	(pounds)	(pounds)	(million pounds)	(million pounds)	(percent)
Arizona .....	194	198	1,960	1,950	380	386	1.6
California .....	1,719	1,723	2,005	1,990	3,447	3,429	-0.5
Colorado .....	200	206	2,180	2,175	436	448	2.8
Florida .....	105	93	1,550	1,525	163	142	-12.9
Georgia .....	82	92	1,780	1,800	146	166	13.7
Idaho .....	650	660	2,090	2,125	1,359	1,403	3.2
Illinois .....	81	80	1,735	1,765	141	141	-
Indiana .....	186	186	1,985	1,980	369	368	-0.3
Iowa .....	225	239	2,050	2,075	461	496	7.6
Kansas .....	169	175	1,990	2,005	336	351	4.5
Michigan .....	435	428	2,255	2,300	981	984	0.3
Minnesota .....	461	453	1,910	1,945	881	881	-
New Mexico .....	298	284	2,020	2,030	602	577	-4.2
New York .....	628	625	2,050	2,095	1,287	1,309	1.7
Ohio .....	251	250	1,820	1,830	457	458	0.2
Oregon .....	125	125	1,760	1,760	220	220	-
Pennsylvania .....	470	468	1,740	1,765	818	826	1.0
South Dakota .....	162	186	1,975	1,965	320	365	14.1
Texas .....	625	655	2,105	2,150	1,316	1,408	7.0
Utah .....	94	94	1,930	1,930	181	181	-
Vermont .....	120	117	1,760	1,810	211	212	0.5
Virginia .....	71	69	1,670	1,670	119	115	-3.4
Washington .....	263	257	2,010	2,025	529	520	-1.7
Wisconsin .....	1,278	1,271	2,075	2,100	2,652	2,669	0.6
24-State Total .....	8,892	8,934	2,003	2,021	17,812	18,055	1.4

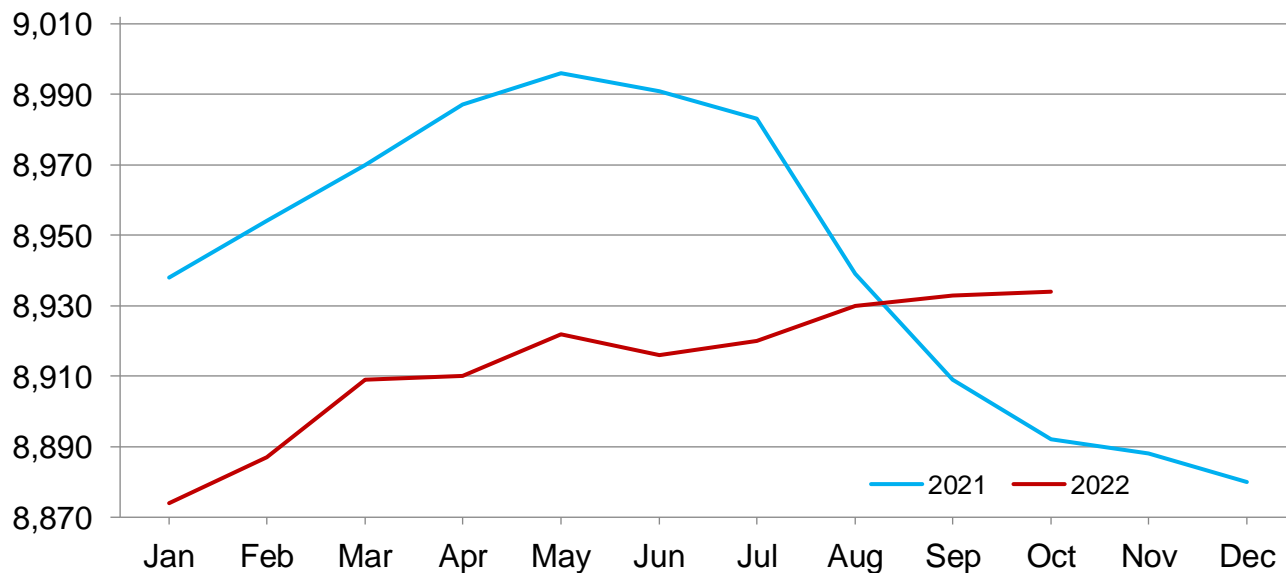
- Represents zero.

<sup>1</sup> Includes dry cows. Excludes heifers not yet fresh.

<sup>2</sup> Excludes milk sucked by calves.

## Monthly Milk Cows - 24 Selected States

Thousand head



## Milk Cows and Production – 24 Selected States: September 2021 and 2022

[May not add due to rounding]

	Milk cows <sup>1</sup>		Milk per cow <sup>2</sup>		Milk production <sup>2</sup>		Change from 2021
	2021	2022	2021	2022	2021	2022	
	(1,000 head)	(1,000 head)	(pounds)	(pounds)	(million pounds)	(million pounds)	(percent)
Arizona .....	194	198	1,790	1,800	347	356	2.6
California .....	1,719	1,723	1,905	1,900	3,275	3,274	(Z)
Colorado .....	199	206	2,135	2,130	425	439	3.3
Florida .....	105	93	1,475	1,430	155	133	-14.2
Georgia .....	82	92	1,670	1,695	137	156	13.9
Idaho .....	651	660	2,070	2,105	1,348	1,389	3.0
Illinois .....	82	80	1,650	1,665	135	133	-1.5
Indiana .....	189	186	1,900	1,900	359	353	-1.7
Iowa .....	225	238	1,995	2,000	449	476	6.0
Kansas .....	170	175	1,915	1,955	326	342	4.9
Michigan .....	438	428	2,195	2,235	961	957	-0.4
Minnesota .....	461	453	1,870	1,895	862	858	-0.5
New Mexico .....	300	284	1,930	1,970	579	559	-3.5
New York .....	628	625	2,000	2,055	1,256	1,284	2.2
Ohio .....	254	250	1,760	1,770	447	443	-0.9
Oregon .....	125	125	1,710	1,710	214	214	-
Pennsylvania .....	473	468	1,690	1,705	799	798	-0.1
South Dakota .....	161	186	1,920	1,910	309	355	14.9
Texas .....	625	655	1,985	2,055	1,241	1,346	8.5
Utah .....	94	94	1,905	1,905	179	179	-
Vermont .....	120	117	1,725	1,770	207	207	-
Virginia .....	72	69	1,590	1,615	114	111	-2.6
Washington .....	264	257	1,975	2,010	521	517	-0.8
Wisconsin .....	1,278	1,271	2,030	2,060	2,594	2,618	0.9
24-State Total .....	8,909	8,933	1,935	1,959	17,239	17,497	1.5

- Represents zero.

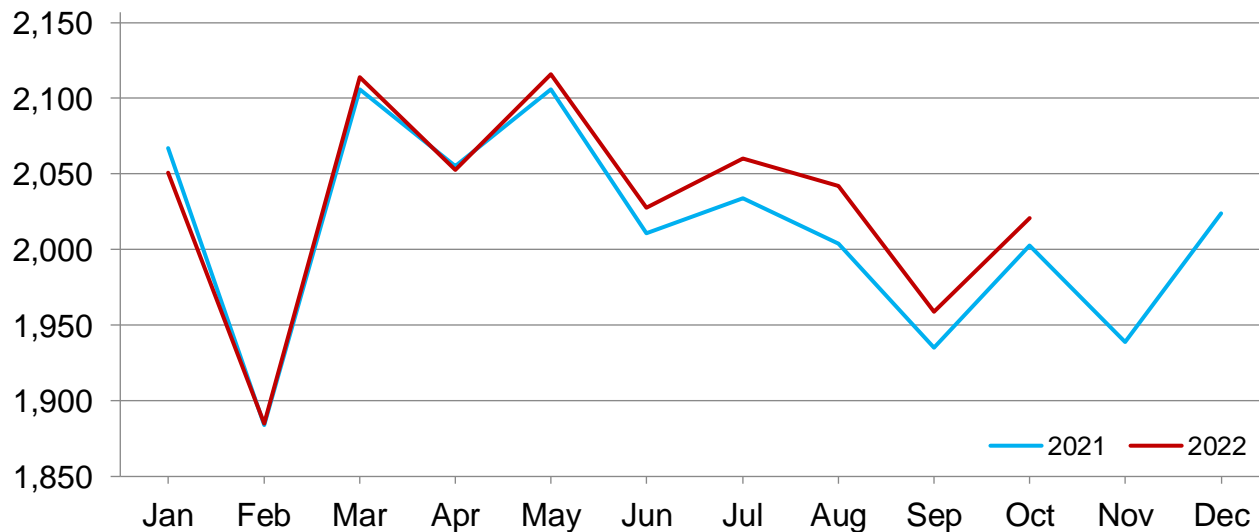
(Z) Less than half of the unit shown.

<sup>1</sup> Includes dry cows. Excludes heifers not yet fresh.

<sup>2</sup> Excludes milk sucked by calves.

## Monthly Milk Per Cow - 24 Selected States

Pounds



## Statistical Methodology

**Survey Procedures:** Primary data used to determine these estimates were obtained from a sample of producers. Individual States maintain a list of all known milk producers and information on the size of their herd. States use all known sources of producers to ensure that their lists are as complete as possible. Generally, all large producers and a sample of small producers are included in the survey. Questionnaires are mailed to producers near the end of the month to obtain data for the first day of the month. Additional reports are obtained by telephone, as needed, to supplement the mail response. Where feasible, States utilize state and federal administrative data to estimate milk production. This eliminates duplication of data gathering by different government agencies such as Agricultural Marketing Service (AMS) Dairy Market News. Indications of milk cow inventory are also obtained in the January Cattle Survey.

**Estimation Procedures:** Regional Field Offices prepare these estimates by using a combination of survey indications, historic trends, and any available administrative data. Individual State estimates are reviewed by the Agricultural Statistics Board for reasonableness.

**Revision Policy:** Milk production, milk per cow, and number of milk cows are subject to revision the following month after initial publication for monthly States or the following quarter for the quarterly States. Normally, administrative data from Federal Market Orders, State Departments of Agriculture, or other sources are the main basis for revisions. However, administrative data for all States may not be available in time for these revisions. Estimates are again subject to revisions in February each year based on additional administrative data. In the event that additional changes are necessary, a third revision is possible in February the following year. Estimates are again reviewed after data from the five-year Census of Agriculture are available. No revisions are made after that date.

**Reliability:** Since all operations with dairy animals are not included in the sample, survey estimates are subject to sampling variability. Survey results are also subject to non-sampling errors such as omissions, duplications, and mistakes in reporting, recording, and processing the data. The effects of these errors cannot be measured directly. They are minimized through rigid quality controls in the data collection process and through a careful review of all reported data for consistency and reasonableness.

To assist users in evaluating the reliability of the estimates in this report, the "Root Mean Square Error" is shown for selected items in the table below. The "Root Mean Square Error" is a statistical measure based on past performance and is computed using the differences between first and final estimates. The "Root Mean Square Error" for the 24 State milk production estimates over the past 24 months is 0.3 percent. This means that chances are 2 out of 3 that the final estimate will not be above or below the current estimate of 18.1 billion pounds by more than 0.3 percent. Chances are 9 out of 10 that the difference will not exceed 0.5 percent.

### Reliability of Monthly Milk Production Estimates

[Based on data for the past 24 months]

Item	Root mean square error	90 percent confidence level	Difference between first and latest estimate				
			Average	Smallest	Largest	Months	
						Below latest	Above latest
	(percent)	(percent)	(1,000)	(1,000)	(1,000)	(number)	(number)
Milk production .....	0.3	0.5	42	3	181	14	10
All Milk cows .....	0.1	0.2	9	1	30	15	9

## Information Contacts

Listed below are the commodity specialists in the Livestock Branch of the National Agricultural Statistics Service to contact for additional information. E-mail inquiries may be sent to [nass@usda.gov](mailto:nass@usda.gov).

Travis Averill, Chief, Livestock Branch .....	(202) 692-0069
Scott Hollis, Head, Livestock Section .....	(202) 690-2424
Sherry Bertramsen – Livestock Slaughter .....	(202) 690-8632
Ryan Cowen – Cattle, Cattle on Feed .....	(202) 720-3040
Anthony Fischer – Hogs and Pigs .....	(202) 720-3106
Mike Miller – Milk Production and Milk Cows .....	(202) 720-3278
Suzanne Richards – Dairy Products .....	(202) 720-4448
Vacant – Sheep and Goats .....	(202) 690-3236

## Access to NASS Reports

For your convenience, you may access NASS reports and products the following ways:

- All reports are available electronically, at no cost, on the NASS web site: [www.nass.usda.gov](http://www.nass.usda.gov).
- Both national and state specific reports are available via a free e-mail subscription. To set-up this free subscription, visit [www.nass.usda.gov](http://www.nass.usda.gov) and click on “National” or “State” in upper right corner above “search” box to create an account and select the reports you would like to receive.
- Cornell’s Mann Library has launched a new website housing NASS’s and other agency’s archived reports. The new website, <https://usda.library.cornell.edu>. All email subscriptions containing reports will be sent from the new website, <https://usda.library.cornell.edu>. To continue receiving the reports via e-mail, you will have to go to the new website, create a new account and re-subscribe to the reports. If you need instructions to set up an account or subscribe, they are located at: <https://usda.library.cornell.edu/help>. You should whitelist [notifications@usda-esmis.library.cornell.edu](mailto:notifications@usda-esmis.library.cornell.edu) in your email client to avoid the emails going into spam/junk folders.

For more information on NASS surveys and reports, call the NASS Agricultural Statistics Hotline at (800) 727-9540, 7:30 a.m. to 4:00 p.m. ET, or e-mail: [nass@usda.gov](mailto:nass@usda.gov).

The U.S. Department of Agriculture (USDA) prohibits discrimination against its customers, employees, and applicants for employment on the basis of race, color, national origin, age, disability, sex, gender identity, religion, reprisal, and where applicable, political beliefs, marital status, familial or parental status, sexual orientation, or all or part of an individual's income is derived from any public assistance program, or protected genetic information in employment or in any program or activity conducted or funded by the Department. (Not all prohibited bases will apply to all programs and/or employment activities.)

If you wish to file a Civil Rights program complaint of discrimination, complete the [USDA Program Discrimination Complaint Form](#) (PDF), found online at [www.ascr.usda.gov/filing-program-discrimination-complaint-usda-customer](http://www.ascr.usda.gov/filing-program-discrimination-complaint-usda-customer), or at any USDA office, or call (866) 632-9992 to request the form. You may also write a letter containing all of the information requested in the form. Send your completed complaint form or letter to us by mail at U.S. Department of Agriculture, Director, Office of Adjudication, 1400 Independence Avenue, S.W., Washington, D.C. 20250-9410, by fax (202) 690-7442 or email at [program.intake@usda.gov](mailto:program.intake@usda.gov).