



ISSN: 1949-1557

Released July 21, 2022, by the National Agricultural Statistics Service (NASS), Agricultural Statistics Board, United States Department of Agriculture (USDA).

June Milk Production up 0.3 Percent

Milk production in the 24 major States during June totaled 18.1 billion pounds, up 0.3 percent from June 2021. May revised production, at 18.9 billion pounds, was down 0.4 percent from May 2021. The May revision represented an increase of 37 million pounds or 0.2 percent from last month's preliminary production estimate.

Production per cow in the 24 major States averaged 2,031 pounds for June, 20 pounds above June 2021.

The number of milk cows on farms in the 24 major States was 8.93 million head, 65,000 head less than June 2021, but 4,000 head more than May 2022.

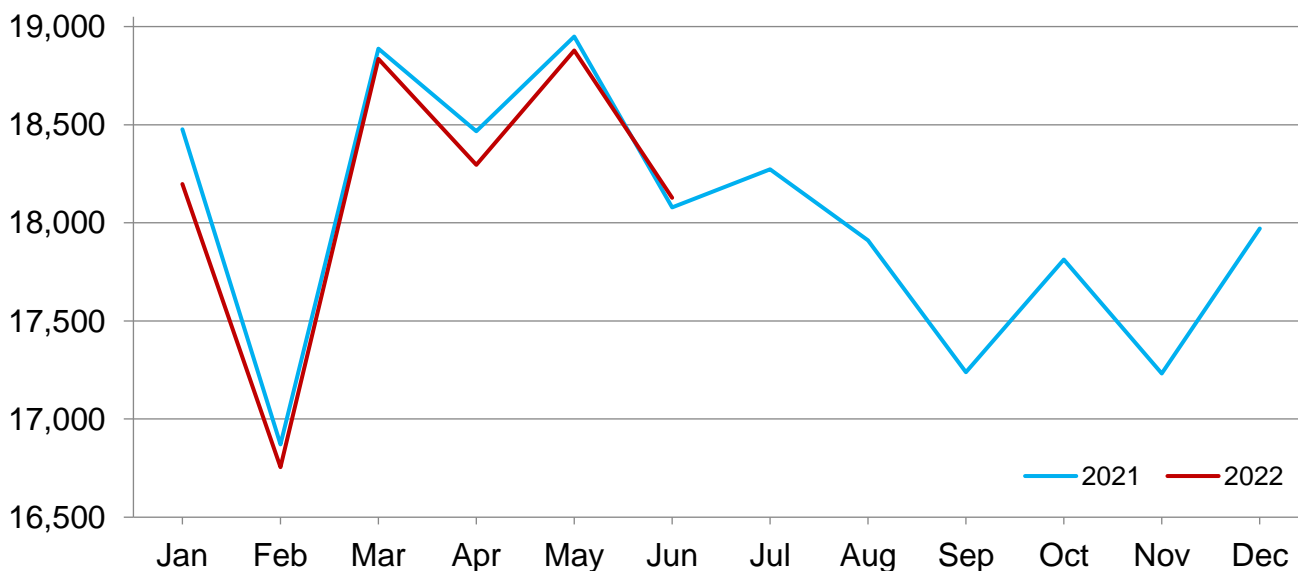
April-June Milk Production down 0.5 Percent

Milk production in the United States during the April - June quarter totaled 57.9 billion pounds, down 0.5 percent from the April - June quarter last year.

The average number of milk cows in the United States during the quarter was 9.42 million head, 32,000 head more than the January - March quarter, but 87,000 head less than the same period last year.

Monthly Milk Production - 24 Selected States

Million pounds



Milk Cows and Production by Quarter – United States: 2021-2022

[May not add due to rounding. Blank data cells indicate estimation period has not yet begun]

Quarter	Milk cows ¹		Milk per cow ²		Milk production ²		
	2021	2022	2021	2022	2021	2022	Change from 2021
	(1,000 head)	(1,000 head)	(pounds)	(pounds)	(million pounds)	(million pounds)	(percent)
January-March	9,466	9,384	6,005	6,000	56,847	56,305	-1.0
April-June	9,503	9,416	6,119	6,147	58,147	57,883	-0.5
July-September	9,442		5,914		55,836		
October-December	9,381		5,909		55,428		
Annual	9,448		23,948		226,258		

¹ Includes dry cows. Excludes heifers not yet fresh.

² Excludes milk sucked by calves.

Milk Cows and Production by Month – 24 Selected States: 2021-2022

[May not add due to rounding. Blank data cells indicate estimation period has not yet begun]

Month	Milk cows ¹		Milk per cow ²		Milk production ²		
	2021	2022	2021	2022	2021	2022	Change from 2021
	(1,000 head)	(1,000 head)	(pounds)	(pounds)	(million pounds)	(million pounds)	(percent)
January	8,938	8,874	2,067	2,051	18,477	18,198	-1.5
February	8,954	8,887	1,884	1,885	16,871	16,755	-0.7
March	8,970	8,909	2,106	2,114	18,888	18,835	-0.3
April	8,987	8,910	2,055	2,053	18,467	18,296	-0.9
May	8,996	8,922	2,106	2,116	18,949	18,878	-0.4
June	8,991	8,926	2,011	2,031	18,078	18,128	0.3
July	8,983		2,034		18,272		
August	8,939		2,004		17,910		
September	8,909		1,935		17,239		
October	8,892		2,003		17,812		
November	8,888		1,939		17,232		
December	8,880		2,024		17,971		
Annual	8,944		24,169		216,166		

¹ Includes dry cows. Excludes heifers not yet fresh.

² Excludes milk sucked by calves.

Estimated Milk Cows and Production by Month – United States: 2021-2022

[May not add due to rounding. Blank data cells indicate estimation period has not yet begun]

Month	Milk cows ¹		Milk per cow ²		Milk production ²		
	2021	2022	2021	2022	2021	2022	Change from 2021
	(1,000 head)	(1,000 head)	(pounds)	(pounds)	(million pounds)	(million pounds)	(percent)
January	9,450	9,367	2,049	2,034	19,365	19,050	-1.6
February	9,466	9,380	1,868	1,870	17,685	17,540	-0.8
March	9,482	9,404	2,088	2,096	19,797	19,715	-0.4
April	9,500	9,405	2,037	2,036	19,350	19,153	-1.0
May	9,507	9,419	2,088	2,097	19,855	19,755	-0.5
June	9,501	9,423	1,994	2,014	18,942	18,975	0.2
July	9,483		2,014		19,097		
August	9,438		1,984		18,721		
September	9,405		1,916		18,018		
October	9,387		1,984		18,623		
November	9,382		1,920		18,015		
December	9,373		2,005		18,790		
Annual	9,448		23,948		226,258		

¹ Includes dry cows. Excludes heifers not yet fresh.

² Excludes milk sucked by calves.

Milk Cows and Production – 24 Selected States: June 2021 and 2022

[May not add due to rounding]

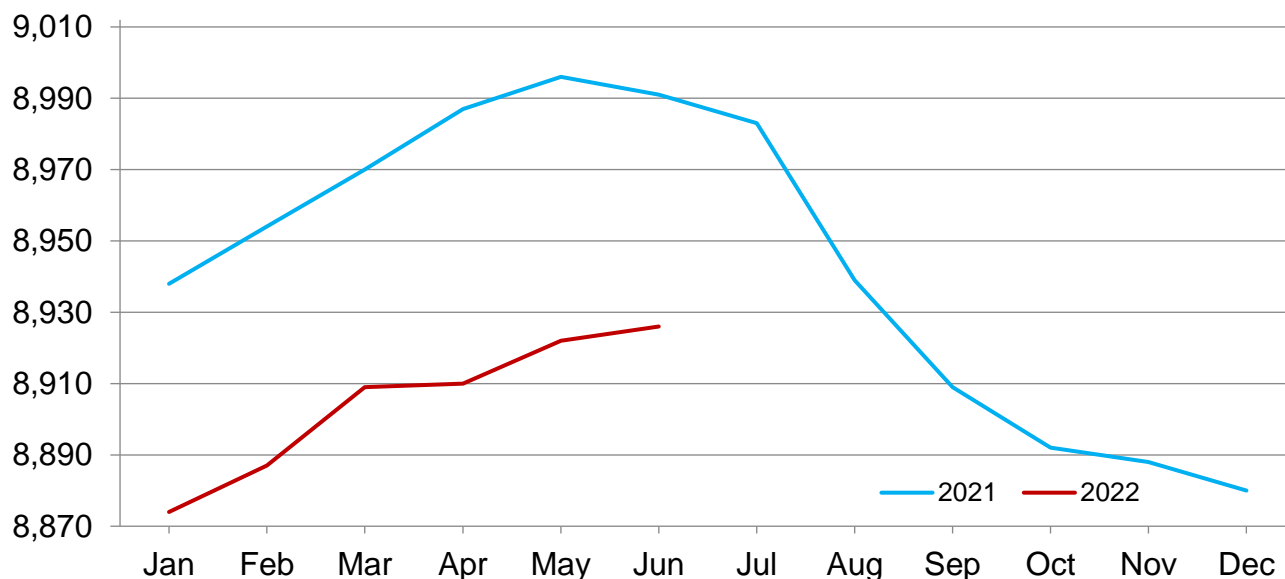
State	Milk cows ¹		Milk per cow ²		Milk production ²		Change from 2021
	2021	2022	2021	2022	2021	2022	
	(1,000 head)	(1,000 head)	(pounds)	(pounds)	(million pounds)	(million pounds)	(percent)
Arizona	200	200	2,025	2,020	405	404	-0.2
California	1,719	1,722	2,010	2,010	3,455	3,461	0.2
Colorado	203	207	2,145	2,165	435	448	3.0
Florida	110	100	1,690	1,715	186	172	-7.5
Georgia	82	92	1,830	1,830	150	168	12.0
Idaho	654	653	2,130	2,135	1,393	1,394	0.1
Illinois	83	80	1,800	1,800	149	144	-3.4
Indiana	197	188	2,000	2,025	394	381	-3.3
Iowa	228	234	2,025	2,035	462	476	3.0
Kansas	173	174	1,920	1,965	332	342	3.0
Michigan	445	429	2,270	2,330	1,010	1,000	-1.0
Minnesota	462	450	1,895	1,925	875	866	-1.0
New Mexico	326	289	2,070	2,050	675	592	-12.3
New York	630	623	2,085	2,105	1,314	1,311	-0.2
Ohio	260	251	1,840	1,875	478	471	-1.5
Oregon	126	127	1,755	1,760	221	224	1.4
Pennsylvania	475	467	1,780	1,800	846	841	-0.6
South Dakota	157	178	1,910	1,930	300	344	14.7
Texas	624	648	2,055	2,115	1,282	1,371	6.9
Utah	97	94	1,975	1,975	192	186	-3.1
Vermont	119	117	1,805	1,805	215	211	-1.9
Virginia	73	70	1,655	1,675	121	117	-3.3
Washington	273	261	2,010	2,015	549	526	-4.2
Wisconsin	1,275	1,272	2,070	2,105	2,639	2,678	1.5
24-State Total	8,991	8,926	2,011	2,031	18,078	18,128	0.3

¹ Includes dry cows. Excludes heifers not yet fresh.

² Excludes milk sucked by calves.

Monthly Milk Cows - 24 Selected States

Thousand head



Milk Cows and Production – 24 Selected States: May 2021 and 2022

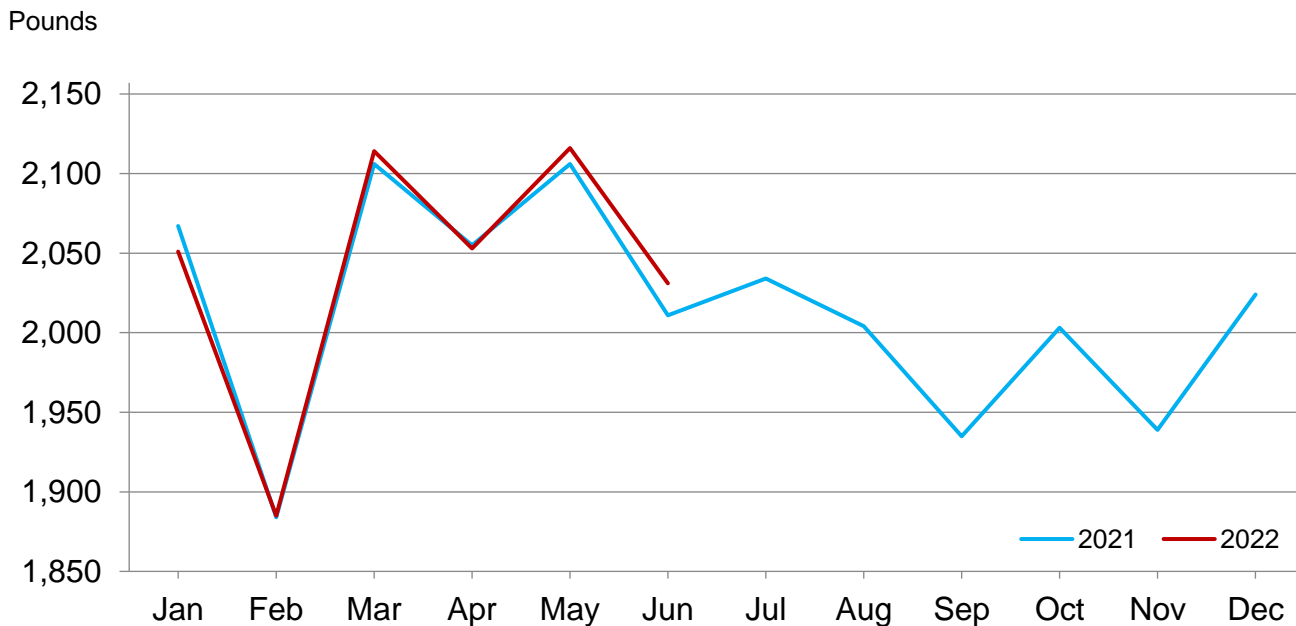
[May not add due to rounding]

	Milk cows ¹		Milk per cow ²		Milk production ²		Change from 2021
	2021	2022	2021	2022	2021	2022	
	(1,000 head)	(1,000 head)	(pounds)	(pounds)	(million pounds)	(million pounds)	(percent)
Arizona	201	200	2,205	2,195	443	439	-0.9
California	1,719	1,722	2,165	2,130	3,722	3,668	-1.5
Colorado	206	206	2,225	2,235	458	460	0.4
Florida	110	99	1,765	1,815	194	180	-7.2
Georgia	82	92	1,890	1,920	155	177	14.2
Idaho	654	653	2,205	2,200	1,442	1,437	-0.3
Illinois	83	80	1,890	1,915	157	153	-2.5
Indiana	196	187	2,050	2,060	402	385	-4.2
Iowa	228	234	2,095	2,125	478	497	4.0
Kansas	175	173	2,040	2,080	357	360	0.8
Michigan	445	427	2,335	2,390	1,039	1,021	-1.7
Minnesota	462	452	1,960	1,980	906	895	-1.2
New Mexico	330	292	2,140	2,165	706	632	-10.5
New York	630	623	2,155	2,190	1,358	1,364	0.4
Ohio	260	251	1,890	1,920	491	482	-1.8
Oregon	126	127	1,830	1,825	231	232	0.4
Pennsylvania	475	467	1,880	1,890	893	883	-1.1
South Dakota	154	178	1,960	1,985	302	353	16.9
Texas	622	643	2,175	2,225	1,353	1,431	5.8
Utah	97	94	2,030	2,030	197	191	-3.0
Vermont	119	118	1,870	1,875	223	221	-0.9
Virginia	73	70	1,785	1,820	130	127	-2.3
Washington	275	261	2,105	2,070	579	540	-6.7
Wisconsin	1,274	1,273	2,145	2,160	2,733	2,750	0.6
24-State Total	8,996	8,922	2,106	2,116	18,949	18,878	-0.4

¹ Includes dry cows. Excludes heifers not yet fresh.

² Excludes milk sucked by calves.

Monthly Milk Per Cow - 24 Selected States



Milk Cows and Production – States and United States: Revised January - March 2021 and 2022

[May not add due to rounding]

State	January - March milk cows ¹		January - March milk production ²		
	2021	2022	2021	2022	Change from 2021
	(1,000 head)	(1,000 head)	(million pounds)	(million pounds)	(percent)
Alabama	3.0	3.0	12.0	10.0	-16.7
Alaska	(D)	(D)	(D)	(D)	(NA)
Arizona	200.0	197.0	1,284.0	1,267.0	-1.3
Arkansas	5.0	4.5	17.0	13.0	-23.5
California	1,720.0	1,721.0	10,655.0	10,574.0	-0.8
Colorado	203.0	202.0	1,310.0	1,300.0	-0.8
Connecticut	19.0	18.0	112.0	108.0	-3.6
Delaware	3.0	2.8	14.5	13.0	-10.3
Florida	109.0	100.0	587.0	534.0	-9.0
Georgia	80.0	88.0	462.0	517.0	11.9
Hawaii	(D)	(D)	(D)	(D)	(NA)
Idaho	651.0	652.0	3,995.0	4,005.0	0.3
Illinois	83.0	80.0	461.0	442.0	-4.1
Indiana	193.0	187.0	1,138.0	1,103.0	-3.1
Iowa	224.0	227.0	1,374.0	1,390.0	1.2
Kansas	174.0	170.0	1,047.0	1,013.0	-3.2
Kentucky	47.0	45.0	239.0	234.0	-2.1
Louisiana	10.0	9.0	38.0	33.0	-13.2
Maine	27.0	26.0	146.0	137.0	-6.2
Maryland	43.0	41.0	231.0	218.0	-5.6
Massachusetts	10.0	9.5	50.0	48.0	-4.0
Michigan	441.0	428.0	2,978.0	2,888.0	-3.0
Minnesota	460.0	454.0	2,624.0	2,572.0	-2.0
Mississippi	8.0	7.0	32.0	26.0	-18.8
Missouri	72.0	68.0	260.0	238.0	-8.5
Montana	11.0	10.5	61.0	57.0	-6.6
Nebraska	59.0	57.0	362.0	352.0	-2.8
Nevada	33.0	32.0	201.0	196.0	-2.5
New Hampshire	10.5	10.5	58.0	55.0	-5.2
New Jersey	4.4	4.3	24.0	23.0	-4.2
New Mexico	335.0	294.0	2,099.0	1,858.0	-11.5
New York	626.0	620.0	3,846.0	3,813.0	-0.9
North Carolina	40.0	39.0	239.0	238.0	-0.4
North Dakota	15.0	14.5	82.0	80.0	-2.4
Ohio	260.0	249.0	1,425.0	1,370.0	-3.9
Oklahoma	40.0	40.0	178.0	189.0	6.2
Oregon	125.0	126.0	647.0	655.0	1.2
Pennsylvania	475.0	468.0	2,565.0	2,502.0	-2.5
Rhode Island	0.5	0.5	2.6	2.5	-3.8
South Carolina	9.5	9.0	44.0	44.0	-
South Dakota	144.0	174.0	814.0	980.0	20.4
Tennessee	29.0	27.0	135.0	126.0	-6.7
Texas	617.0	634.0	3,883.0	4,072.0	4.9
Utah	96.0	94.0	546.0	533.0	-2.4
Vermont	120.0	119.0	642.0	635.0	-1.1
Virginia	74.0	71.0	381.0	368.0	-3.4
Washington	278.0	263.0	1,653.0	1,568.0	-5.1
West Virginia	5.0	5.0	19.0	19.0	-
Wisconsin	1,265.0	1,273.0	7,820.0	7,829.0	0.1
Wyoming	8.0	9.0	52.0	56.1	7.9
Other States ³	0.8	1.0	1.7	1.3	-23.5
United States	9,466.0	9,384.0	56,847.0	56,305.0	-1.0

- Represents zero.

(D) Withheld to avoid disclosing data for individual operations.

(NA) Not available.

¹ Includes dry cows. Excludes heifers not yet fresh.

² Excludes milk sucked by calves.

³ Other States includes Alaska and Hawaii.

Milk Cows and Production – States and United States: Preliminary April - June 2021 and 2022

[May not add due to rounding]

State	April - June milk cows ¹		April - June milk production ²		
	2021	2022	2021	2022	Change from 2021
	(1,000 head)	(1,000 head)	(million pounds)	(million pounds)	(percent)
Alabama	3.0	2.5	11.0	9.0	-18.2
Alaska	(D)	(D)	(D)	(D)	(NA)
Arizona	201.0	200.0	1,287.0	1,280.0	-0.5
Arkansas	5.0	4.5	17.0	11.0	-35.3
California	1,719.0	1,722.0	10,821.0	10,745.0	-0.7
Colorado	205.0	206.0	1,337.0	1,349.0	0.9
Connecticut	19.0	18.0	113.0	111.0	-1.8
Delaware	3.0	2.8	14.0	12.9	-7.9
Florida	110.0	99.0	579.0	527.0	-9.0
Georgia	82.0	92.0	462.0	521.0	12.8
Hawaii	(D)	(D)	(D)	(D)	(NA)
Idaho	654.0	653.0	4,210.0	4,209.0	-
Illinois	83.0	80.0	462.0	447.0	-3.2
Indiana	196.0	187.0	1,186.0	1,140.0	-3.9
Iowa	228.0	233.0	1,405.0	1,450.0	3.2
Kansas	174.0	173.0	1,040.0	1,045.0	0.5
Kentucky	46.0	46.0	242.0	248.0	2.5
Louisiana	9.5	9.0	35.0	32.0	-8.6
Maine	27.0	26.0	149.0	144.0	-3.4
Maryland	43.0	41.0	229.0	216.0	-5.7
Massachusetts	10.0	9.5	52.0	49.0	-5.8
Michigan	445.0	428.0	3,061.0	2,999.0	-2.0
Minnesota	462.0	452.0	2,656.0	2,622.0	-1.3
Mississippi	7.5	7.0	29.0	26.0	-10.3
Missouri	72.0	68.0	283.0	263.0	-7.1
Montana	11.0	10.0	62.0	57.0	-8.1
Nebraska	58.0	58.0	359.0	361.0	0.6
Nevada	33.0	32.0	213.0	203.0	-4.7
New Hampshire	10.5	10.0	58.0	56.0	-3.4
New Jersey	4.4	4.3	24.0	23.0	-4.2
New Mexico	330.0	291.0	2,094.0	1,845.0	-11.9
New York	629.0	622.0	3,987.0	3,980.0	-0.2
North Carolina	40.0	39.0	239.0	239.0	-
North Dakota	15.0	14.0	86.0	81.0	-5.8
Ohio	260.0	251.0	1,447.0	1,415.0	-2.2
Oklahoma	40.0	40.0	181.0	188.0	3.9
Oregon	126.0	127.0	673.0	681.0	1.2
Pennsylvania	475.0	467.0	2,613.0	2,579.0	-1.3
Rhode Island	0.5	0.5	2.6	2.6	-
South Carolina	9.0	9.0	42.0	43.0	2.4
South Dakota	154.0	178.0	889.0	1,033.0	16.2
Tennessee	29.0	27.0	136.0	124.0	-8.8
Texas	622.0	644.0	3,971.0	4,197.0	5.7
Utah	97.0	94.0	576.0	560.0	-2.8
Vermont	119.0	118.0	655.0	647.0	-1.2
Virginia	73.0	70.0	380.0	370.0	-2.6
Washington	275.0	262.0	1,687.0	1,592.0	-5.6
West Virginia	5.0	5.0	19.0	20.0	5.3
Wisconsin	1,274.0	1,273.0	8,016.0	8,069.0	0.7
Wyoming	8.5	9.5	55.7	60.3	8.3
Other States ³	0.9	1.0	1.3	1.3	-
United States	9,503.0	9,416.0	58,147.0	57,883.0	-0.5

- Represents zero.

(D) Withheld to avoid disclosing data for individual operations.

(NA) Not available.

¹ Includes dry cows. Excludes heifers not yet fresh.

² Excludes milk sucked by calves.

³ Other States includes Alaska and Hawaii.

Statistical Methodology

Survey Procedures: Primary data used to determine these estimates were obtained from a sample of producers. Individual States maintain a list of all known milk producers and information on the size of their herd. States use all known sources of producers to ensure that their lists are as complete as possible. Generally, all large producers and a sample of small producers are included in the survey. Questionnaires are mailed to producers near the end of the month to obtain data for the first day of the month. Additional reports are obtained by telephone, as needed, to supplement the mail response. Where feasible, States utilize state and federal administrative data to estimate milk production. This eliminates duplication of data gathering by different government agencies. Indications of milk cow inventory are also obtained in the January Cattle Surveys.

Estimation Procedures: Regional Field Offices prepare these estimates by using a combination of survey indications, historic trends, and any available administrative data. Individual State estimates are reviewed by the Agricultural Statistics Board for reasonableness.

Revision Policy: Milk production, milk per cow, and number of milk cows are subject to revision the following month after initial publication for monthly States or the following quarter for the quarterly States. Normally, administrative data from Federal Market Orders, State Departments of Agriculture, or other sources are the main basis for revisions. However, administrative data for all States may not be available in time for these revisions. Estimates are again subject to revisions in February each year based on additional administrative data. In the event that additional changes are necessary, a third revision is possible in February the following year. Estimates are again reviewed after data from the five-year Census of Agriculture are available. No revisions are made after that date.

Reliability: Since all operations with dairy animals are not included in the sample, survey estimates are subject to sampling variability. Survey results are also subject to non-sampling errors such as omissions, duplications, and mistakes in reporting, recording, and processing the data. The effects of these errors cannot be measured directly. They are minimized through rigid quality controls in the data collection process and through a careful review of all reported data for consistency and reasonableness.

To assist users in evaluating the reliability of the estimates in this report, the "Root Mean Square Error" is shown for selected items on the next page. The "Root Mean Square Error" is a statistical measure based on past performance and is computed using the differences between first and final estimates. The "Root Mean Square Error" for milk production estimates over the past 20 quarters is 0.2 percent. This means that chances are 2 out of 3 that the final estimate will not be above or below the current estimate of 57.9 billion pounds by more than 0.2 percent. Chances are 9 out of 10 that the difference will not exceed 0.3 percent.

Reliability of Quarterly Milk Production Estimates

[Based on data for the past 20 quarters]

Item	Root mean square error	90 percent confidence level	Difference between first and latest estimate				
			Average	Smallest	Largest	Quarters	
						Below latest	Above latest
	(percent)	(percent)	(1,000)	(1,000)	(1,000)	(number)	(number)
Milk production	0.2	0.3	65	7	215	14	6
All milk cows	0.1	0.2	10	1	26	16	4

Information Contacts

Listed below are the commodity specialists in the Livestock Branch of the National Agricultural Statistics Service to contact for additional information. E-mail inquiries may be sent to nass@usda.gov.

Travis Averill, Chief, Livestock Branch	(202) 692-0069
Scott Hollis, Head, Livestock Section	(202) 690-2424
Sherry Bertramsen – Livestock Slaughter	(202) 690-8632
Ryan Cowen – Cattle, Cattle on Feed	(202) 720-3040
Anthony Fischer – Hogs and Pigs	(202) 720-3106
Logan Hartley-Sanguinett – Sheep and Goats	(202) 690-3236
Mike Miller – Milk Production and Milk Cows	(202) 720-3278
Suzanne Richards – Dairy Products	(202) 720-4448

Access to NASS Reports

For your convenience, you may access NASS reports and products the following ways:

- All reports are available electronically, at no cost, on the NASS web site: www.nass.usda.gov.
- Both national and state specific reports are available via a free e-mail subscription. To set-up this free subscription, visit www.nass.usda.gov and click on “National” or “State” in upper right corner above “search” box to create an account and select the reports you would like to receive.
- Cornell’s Mann Library has launched a new website housing NASS’s and other agency’s archived reports. The new website, <https://usda.library.cornell.edu>. All email subscriptions containing reports will be sent from the new website, <https://usda.library.cornell.edu>. To continue receiving the reports via e-mail, you will have to go to the new website, create a new account and re-subscribe to the reports. If you need instructions to set up an account or subscribe, they are located at: <https://usda.library.cornell.edu/help>. You should whitelist notifications@usda-esmis.library.cornell.edu in your email client to avoid the emails going into spam/junk folders.

For more information on NASS surveys and reports, call the NASS Agricultural Statistics Hotline at (800) 727-9540, 7:30 a.m. to 4:00 p.m. ET, or e-mail: nass@usda.gov.

The U.S. Department of Agriculture (USDA) prohibits discrimination against its customers, employees, and applicants for employment on the basis of race, color, national origin, age, disability, sex, gender identity, religion, reprisal, and where applicable, political beliefs, marital status, familial or parental status, sexual orientation, or all or part of an individual's income is derived from any public assistance program, or protected genetic information in employment or in any program or activity conducted or funded by the Department. (Not all prohibited bases will apply to all programs and/or employment activities.)

If you wish to file a Civil Rights program complaint of discrimination, complete the [USDA Program Discrimination Complaint Form](#) (PDF), found online at www.ascr.usda.gov/filing-program-discrimination-complaint-usda-customer, or at any USDA office, or call (866) 632-9992 to request the form. You may also write a letter containing all of the information requested in the form. Send your completed complaint form or letter to us by mail at U.S. Department of Agriculture, Director, Office of Adjudication, 1400 Independence Avenue, S.W., Washington, D.C. 20250-9410, by fax (202) 690-7442 or email at program.intake@usda.gov.