



Released September 19, 2022, by the National Agricultural Statistics Service (NASS), Agricultural Statistics Board, United States Department of Agriculture (USDA).

August Milk Production up 1.7 Percent

Milk production in the 24 major States during August totaled 18.2 billion pounds, up 1.7 percent from August 2021. July revised production, at 18.4 billion pounds, was up 0.6 percent from July 2021. The July revision represented an increase of 53 million pounds or 0.3 percent from last month's preliminary production estimate.

Production per cow in the 24 major States averaged 2,041 pounds for August, 37 pounds above August 2021.

The number of milk cows on farms in the 24 major States was 8.93 million head, 11,000 head less than August 2021, but 8,000 head more than July 2022.

August Milk Production in the United States up 1.6 Percent

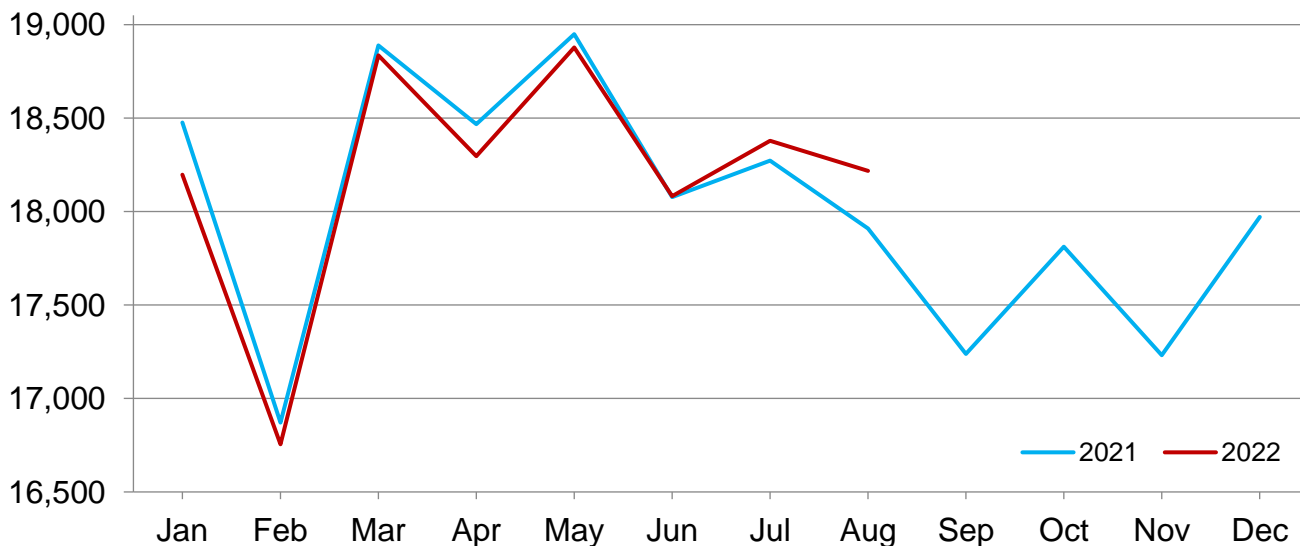
Milk production in the United States during August totaled 19.0 billion pounds, up 1.6 percent from August 2021.

Production per cow in the United States averaged 2,018 pounds for August, 34 pounds above August 2021.

The number of milk cows on farms in the United States was 9.43 million head, 11,000 head less than August 2021, but 8,000 head more than July 2022.

Monthly Milk Production - 24 Selected States

Million pounds



Milk Cows and Production by Quarter – United States: 2021-2022

[May not add due to rounding. Blank data cells indicate estimation period has not yet begun]

Quarter	Milk cows ¹		Milk per cow ²		Milk production ²		
	2021	2022	2021	2022	2021	2022	Change from 2021
	(1,000 head)	(1,000 head)	(pounds)	(pounds)	(million pounds)	(million pounds)	(percent)
January-March	9,466	9,384	6,005	6,000	56,847	56,305	-1.0
April-June	9,503	9,413	6,119	6,144	58,147	57,838	-0.5
July-September	9,442		5,914		55,836		
October-December	9,381		5,909		55,428		
Annual	9,448		23,948		226,258		

¹ Includes dry cows. Excludes heifers not yet fresh.

² Excludes milk sucked by calves.

Milk Cows and Production by Month – 24 Selected States: 2021-2022

[May not add due to rounding. Blank data cells indicate estimation period has not yet begun]

Month	Milk cows ¹		Milk per cow ²		Milk production ²		
	2021	2022	2021	2022	2021	2022	Change from 2021
	(1,000 head)	(1,000 head)	(pounds)	(pounds)	(million pounds)	(million pounds)	(percent)
January	8,938	8,874	2,067	2,051	18,477	18,198	-1.5
February	8,954	8,887	1,884	1,885	16,871	16,755	-0.7
March	8,970	8,909	2,106	2,114	18,888	18,835	-0.3
April	8,987	8,910	2,055	2,053	18,467	18,296	-0.9
May	8,996	8,922	2,106	2,116	18,949	18,878	-0.4
June	8,991	8,916	2,011	2,028	18,078	18,083	(Z)
July	8,983	8,920	2,034	2,060	18,272	18,379	0.6
August	8,939	8,928	2,004	2,041	17,910	18,218	1.7
September	8,909		1,935		17,239		
October	8,892		2,003		17,812		
November	8,888		1,939		17,232		
December	8,880		2,024		17,971		
Annual	8,944		24,169		216,166		

(Z) Less than half of the unit shown.

¹ Includes dry cows. Excludes heifers not yet fresh.

² Excludes milk sucked by calves.

Estimated Milk Cows and Production by Month – United States: 2021-2022

[May not add due to rounding. Blank data cells indicate estimation period has not yet begun]

Month	Milk cows ¹		Milk per cow ²		Milk production ²		
	2021	2022	2021	2022	2021	2022	Change from 2021
	(1,000 head)	(1,000 head)	(pounds)	(pounds)	(million pounds)	(million pounds)	(percent)
January	9,450	9,367	2,049	2,034	19,365	19,050	-1.6
February	9,466	9,380	1,868	1,870	17,685	17,540	-0.8
March	9,482	9,404	2,088	2,096	19,797	19,715	-0.4
April	9,500	9,405	2,037	2,036	19,350	19,153	-1.0
May	9,507	9,419	2,088	2,097	19,855	19,755	-0.5
June	9,501	9,415	1,994	2,011	18,942	18,930	-0.1
July	9,483	9,419	2,014	2,038	19,097	19,193	0.5
August	9,438	9,427	1,984	2,018	18,721	19,020	1.6
September	9,405		1,916		18,018		
October	9,387		1,984		18,623		
November	9,382		1,920		18,015		
December	9,373		2,005		18,790		
Annual	9,448		23,948		226,258		

¹ Includes dry cows. Excludes heifers not yet fresh.

² Excludes milk sucked by calves.

Milk Cows and Production – 24 Selected States: August 2021 and 2022

[May not add due to rounding]

State	Milk cows ¹		Milk per cow ²		Milk production ²		Change from 2021
	2021	2022	2021	2022	2021	2022	
	(1,000 head)	(1,000 head)	(pounds)	(pounds)	(million pounds)	(million pounds)	(percent)
Arizona	196	198	1,825	1,820	358	360	0.6
California	1,719	1,723	1,970	2,005	3,386	3,455	2.0
Colorado	200	206	2,220	2,220	444	457	2.9
Florida	106	95	1,540	1,535	163	146	-10.4
Georgia	82	93	1,730	1,750	142	163	14.8
Idaho	651	657	2,170	2,205	1,413	1,449	2.5
Illinois	82	80	1,720	1,730	141	138	-2.1
Indiana	192	186	1,940	1,950	372	363	-2.4
Iowa	225	238	2,055	2,075	462	494	6.9
Kansas	170	174	1,985	1,995	337	347	3.0
Michigan	442	427	2,290	2,335	1,012	997	-1.5
Minnesota	461	453	1,940	1,985	894	899	0.6
New Mexico	311	287	1,955	2,050	608	588	-3.3
New York	628	624	2,075	2,130	1,303	1,329	2.0
Ohio	258	250	1,850	1,860	477	465	-2.5
Oregon	124	125	1,770	1,775	219	222	1.4
Pennsylvania	475	468	1,750	1,785	831	835	0.5
South Dakota	160	182	1,980	1,995	317	363	14.5
Texas	625	655	2,035	2,115	1,272	1,385	8.9
Utah	95	94	1,990	1,990	189	187	-1.1
Vermont	120	117	1,780	1,830	214	214	-
Virginia	72	69	1,625	1,660	117	115	-1.7
Washington	267	255	2,030	2,035	542	519	-4.2
Wisconsin	1,278	1,272	2,110	2,145	2,697	2,728	1.1
24-State Total	8,939	8,928	2,004	2,041	17,910	18,218	1.7

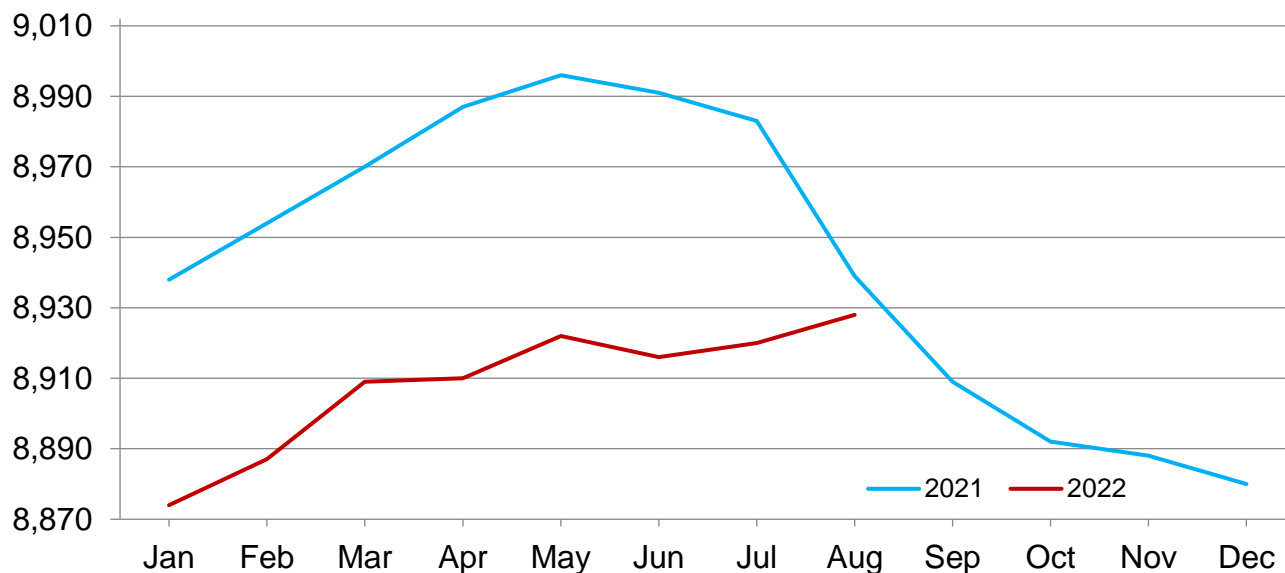
- Represents zero.

¹ Includes dry cows. Excludes heifers not yet fresh.

² Excludes milk sucked by calves.

Monthly Milk Cows - 24 Selected States

Thousand head



Milk Production (September 2022)

USDA, National Agricultural Statistics Service

Milk Cows and Production – 24 Selected States: July 2021 and 2022

[May not add due to rounding]

	Milk cows ¹		Milk per cow ²		Milk production ²		Change from 2021
	2021	2022	2021	2022	2021	2022	
	(1,000 head)	(1,000 head)	(pounds)	(pounds)	(million pounds)	(million pounds)	(percent)
Arizona	198	198	1,905	1,895	377	375	-0.5
California	1,719	1,723	2,000	2,045	3,438	3,524	2.5
Colorado	203	206	2,225	2,220	452	457	1.1
Florida	108	96	1,620	1,605	175	154	-12.0
Georgia	82	93	1,780	1,800	146	167	14.4
Idaho	654	657	2,190	2,225	1,432	1,462	2.1
Illinois	83	80	1,770	1,780	147	142	-3.4
Indiana	197	185	1,970	1,980	388	366	-5.7
Iowa	228	236	2,065	2,080	471	491	4.2
Kansas	172	174	2,005	2,000	345	348	0.9
Michigan	445	427	2,320	2,335	1,032	997	-3.4
Minnesota	462	452	1,945	1,990	899	899	-
New Mexico	321	287	2,000	2,065	642	593	-7.6
New York	630	623	2,120	2,145	1,336	1,336	-
Ohio	260	249	1,870	1,875	486	467	-3.9
Oregon	125	125	1,800	1,805	225	226	0.4
Pennsylvania	475	467	1,795	1,810	853	845	-0.9
South Dakota	159	182	1,970	1,985	313	361	15.3
Texas	625	650	2,085	2,125	1,303	1,381	6.0
Utah	97	94	2,000	1,995	194	188	-3.1
Vermont	120	117	1,825	1,835	219	215	-1.8
Virginia	73	69	1,650	1,690	120	117	-2.5
Washington	269	258	2,045	2,065	550	533	-3.1
Wisconsin	1,278	1,272	2,135	2,150	2,729	2,735	0.2
24-State Total	8,983	8,920	2,034	2,060	18,272	18,379	0.6

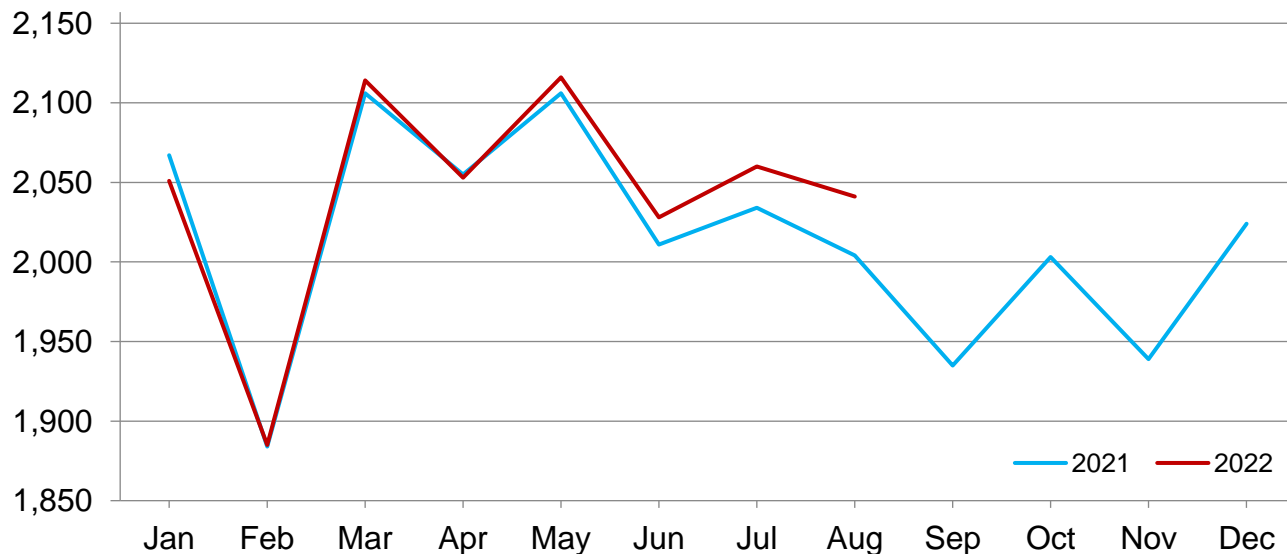
- Represents zero.

¹ Includes dry cows. Excludes heifers not yet fresh.

² Excludes milk sucked by calves.

Monthly Milk Per Cow - 24 Selected States

Pounds



Statistical Methodology

Survey Procedures: Primary data used to determine these estimates were obtained from a sample of producers. Individual States maintain a list of all known milk producers and information on the size of their herd. States use all known sources of producers to ensure that their lists are as complete as possible. Generally, all large producers and a sample of small producers are included in the survey. Questionnaires are mailed to producers near the end of the month to obtain data for the first day of the month. Additional reports are obtained by telephone, as needed, to supplement the mail response. Where feasible, States utilize state and federal administrative data to estimate milk production. This eliminates duplication of data gathering by different government agencies such as Agricultural Marketing Service (AMS) Dairy Market News. Indications of milk cow inventory are also obtained in the January Cattle Survey.

Estimation Procedures: Regional Field Offices prepare these estimates by using a combination of survey indications, historic trends, and any available administrative data. Individual State estimates are reviewed by the Agricultural Statistics Board for reasonableness.

Revision Policy: Milk production, milk per cow, and number of milk cows are subject to revision the following month after initial publication for monthly States or the following quarter for the quarterly States. Normally, administrative data from Federal Market Orders, State Departments of Agriculture, or other sources are the main basis for revisions. However, administrative data for all States may not be available in time for these revisions. Estimates are again subject to revisions in February each year based on additional administrative data. In the event that additional changes are necessary, a third revision is possible in February the following year. Estimates are again reviewed after data from the five-year Census of Agriculture are available. No revisions are made after that date.

Reliability: Since all operations with dairy animals are not included in the sample, survey estimates are subject to sampling variability. Survey results are also subject to non-sampling errors such as omissions, duplications, and mistakes in reporting, recording, and processing the data. The effects of these errors cannot be measured directly. They are minimized through rigid quality controls in the data collection process and through a careful review of all reported data for consistency and reasonableness.

To assist users in evaluating the reliability of the estimates in this report, the "Root Mean Square Error" is shown for selected items in the table below. The "Root Mean Square Error" is a statistical measure based on past performance and is computed using the differences between first and final estimates. The "Root Mean Square Error" for the 24 State milk production estimates over the past 24 months is 0.3 percent. This means that chances are 2 out of 3 that the final estimate will not be above or below the current estimate of 18.2 billion pounds by more than 0.3 percent. Chances are 9 out of 10 that the difference will not exceed 0.5 percent.

Reliability of Monthly Milk Production Estimates

[Based on data for the past 24 months]

Item	Root mean square error	90 percent confidence level	Difference between first and latest estimate				
			Average	Smallest	Largest	Months	
						Below latest	Above latest
	(percent)	(percent)	(1,000)	(1,000)	(1,000)	(number)	(number)
Milk production	0.3	0.5	43	3	181	15	9
All Milk cows	0.2	0.3	11	1	30	15	9

Information Contacts

Listed below are the commodity specialists in the Livestock Branch of the National Agricultural Statistics Service to contact for additional information. E-mail inquiries may be sent to nass@usda.gov.

Travis Averill, Chief, Livestock Branch	(202) 692-0069
Scott Hollis, Head, Livestock Section	(202) 690-2424
Sherry Bertramsen – Livestock Slaughter	(202) 690-8632
Ryan Cowen – Cattle, Cattle on Feed	(202) 720-3040
Anthony Fischer – Hogs and Pigs	(202) 720-3106
Vacant – Sheep and Goats	(202) 690-3236
Mike Miller – Milk Production and Milk Cows	(202) 720-3278
Suzanne Richards – Dairy Products	(202) 720-4448

Access to NASS Reports

For your convenience, you may access NASS reports and products the following ways:

- All reports are available electronically, at no cost, on the NASS web site: www.nass.usda.gov.
- Both national and state specific reports are available via a free e-mail subscription. To set-up this free subscription, visit www.nass.usda.gov and click on “National” or “State” in upper right corner above “search” box to create an account and select the reports you would like to receive.
- Cornell’s Mann Library has launched a new website housing NASS’s and other agency’s archived reports. The new website, <https://usda.library.cornell.edu>. All email subscriptions containing reports will be sent from the new website, <https://usda.library.cornell.edu>. To continue receiving the reports via e-mail, you will have to go to the new website, create a new account and re-subscribe to the reports. If you need instructions to set up an account or subscribe, they are located at: <https://usda.library.cornell.edu/help>. You should whitelist notifications@usda-esmis.library.cornell.edu in your email client to avoid the emails going into spam/junk folders.

For more information on NASS surveys and reports, call the NASS Agricultural Statistics Hotline at (800) 727-9540, 7:30 a.m. to 4:00 p.m. ET, or e-mail: nass@usda.gov.

The U.S. Department of Agriculture (USDA) prohibits discrimination against its customers, employees, and applicants for employment on the basis of race, color, national origin, age, disability, sex, gender identity, religion, reprisal, and where applicable, political beliefs, marital status, familial or parental status, sexual orientation, or all or part of an individual's income is derived from any public assistance program, or protected genetic information in employment or in any program or activity conducted or funded by the Department. (Not all prohibited bases will apply to all programs and/or employment activities.)

If you wish to file a Civil Rights program complaint of discrimination, complete the [USDA Program Discrimination Complaint Form](#) (PDF), found online at www.ascr.usda.gov/filing-program-discrimination-complaint-usda-customer, or at any USDA office, or call (866) 632-9992 to request the form. You may also write a letter containing all of the information requested in the form. Send your completed complaint form or letter to us by mail at U.S. Department of Agriculture, Director, Office of Adjudication, 1400 Independence Avenue, S.W., Washington, D.C. 20250-9410, by fax (202) 690-7442 or email at program.intake@usda.gov.