

Chickens and Eggs



National
Agricultural
Statistics
Service

United States
Department of
Agriculture

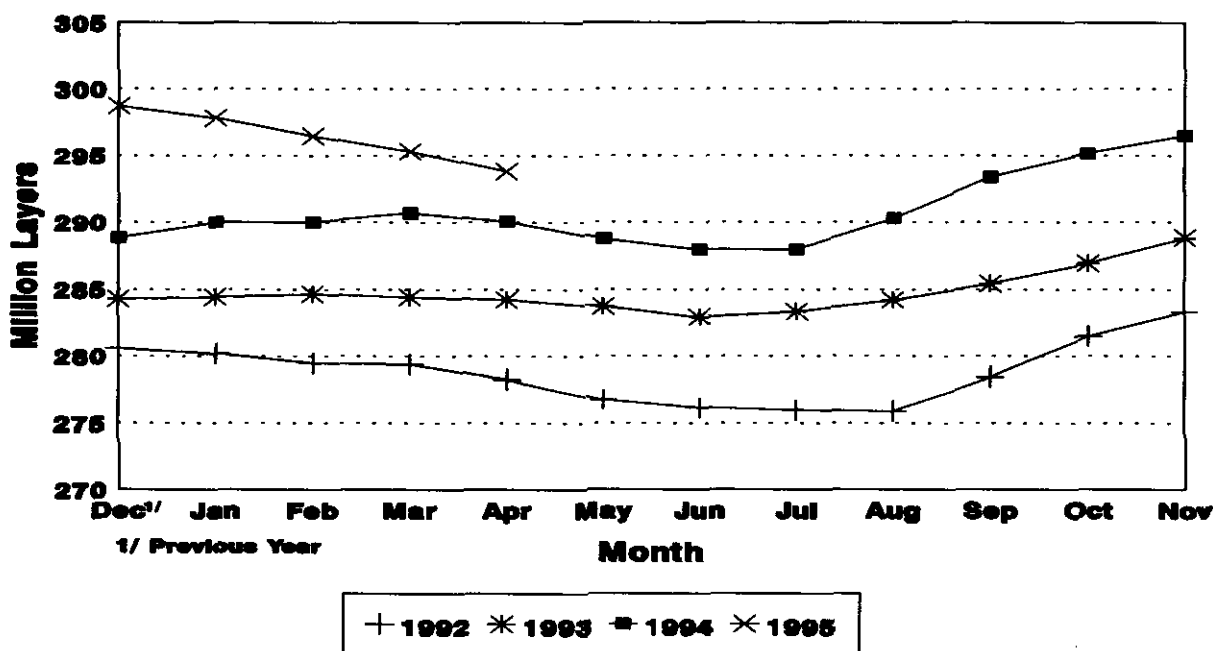
Washington, D.C.

Released May 25, 1995, by the Agricultural Statistics Board. Estimates refer to March, April, and May 1995.

April Egg Production Up 2 Percent

U.S. egg production totaled 6.17 billion during April 1995, up 2 percent from the 6.07 billion produced April 1994. Production included 5.23 billion table eggs and 939 million hatching egg type, of which 873 million were broiler-type and 66.0 million were egg-type. The total number of layers during April 1995 averaged 294 million, up 1 percent from the 290 million during April 1994. April egg production per 100 layers was 2,101 eggs, compared with 2,094 in April 1994.

Average Number of Layers United States, 1992 - 95



For information call Joel D. Moore at (202) 720-3244. Office hours are 8:00 a.m. to 4:30 p.m. ET.

All layers in the U.S. on May 1, 1995, totaled 293 million, compared with 289 million a year ago. The 293 million layers consisted of 240 million layers producing table or commercial type eggs, 49.8 million layers producing broiler-type hatching eggs, and 2.86 million layers producing egg-type hatching eggs. Rate of lay per day on May 1, 1995, averaged 69.1 eggs per 100 layers, up slightly from the 69.0 eggs a year ago.

Laying flocks in the 30 major egg production States produced 5.84 billion eggs during April, up 2 percent from April 1994. The average number of layers during April, at 278 million, was up 1 percent from the year earlier.

Individual State estimates are available for the 30 major egg producing States. These States are listed on page 8 of this release and account for approximately 96 percent of the total U.S. egg production. Production for the other States are grouped into an "Other States" category and combined with the 30 States published individually to obtain a U.S. estimate. Individual State estimates for "Other States" are available annually in the "Layers and Egg Production" report.

Egg-Type Chicks Hatched Down 4 Percent

Egg-type chicks **hatched** during April totaled 34.1 million, down 4 percent from April 1994. **Eggs in incubators** totaled 32.4 million on May 1, 1995, up 1 percent from a year ago.

Domestic placements of **egg-type pullet chicks for future hatchery supply flocks** by leading breeders totaled 317,000 during April 1995, up 14 percent from the 277,000 of April 1994.

Broiler Hatch Up 6 Percent

The April 1995 **hatch** of broiler-type chicks, at 662 million, was 6 percent above April of the previous year. There were 563 million **eggs in incubators** on May 1, 1995, up 5 percent from a year earlier.

Leading breeders placed 6.32 million **broiler-type pullet chicks for future domestic hatchery supply flocks** during April 1995, up 4 percent from April 1994.

For information call Tom Kruchten at (202) 690-4870

Layers: Average Number During the Month,
United States, 1992-1995 1/

Month	1992	1993	1994	1995
1,000 Layers				
Dec 2/	280,572	284,267	288,832	298,709
Jan	280,171	284,398	290,041	297,805
Feb	279,450	284,638	290,047	296,477
Mar	279,373	284,405	290,719	295,422
Apr	278,284	284,234	290,073	293,824
May	276,790	283,694	288,784	
Jun	276,142	282,914	287,974	
Jul	275,953	283,324	287,990	
Aug	275,891	284,192	290,321	
Sep	278,461	285,418	293,381	
Oct	281,573	286,948	295,172	
Nov	283,305	288,875	296,547	

1/ Data are for chart on cover page.

2/ December preceding year.

Eggs: Production During the Month by Type,
United States, 1994-95

Month	Total Eggs		Table Eggs		Hatching Eggs	
	1994	1995	1994	1995	1994	1995
Million Eggs						
Dec 1/	6,264	6,519	5,388	5,568	876	951
Jan	6,186	6,374	5,293	5,418	893	956
Feb	5,598	5,720	4,775	4,856	823	864
Mar	6,320	6,448	5,404	5,490	916	958
Apr	6,073	6,173	5,177	5,234	896	939
May	6,189		5,249		940	
Jun	5,992		5,085		907	
Jul	6,205		5,269		936	
Aug	6,272		5,336		936	
Sep	6,125		5,218		907	
Oct	6,377		5,446		931	
Nov	6,265		5,358		907	
During Year:	73,866	31,234	62,998	26,566	10,868	4,668

1/ December preceding year.

Eggs and Layers: Layers on Hand and Eggs Produced by Type,
and Forced Molt, United States, March-April 1994-95

Item	1994	1995 1/	1995 as % of 1994
Layers During Mar (1,000)			
All Layers	290,719	295,422	102
Table Egg Type	240,634	243,232	101
Hatching Egg Type	50,085	52,190	104
Broiler-Type Hatching	47,215	49,307	104
Egg-Type Hatching	2,870	2,883	100
Eggs per 100 Layers During Mar (Number)			
All Layers	2.174	2.183	100
Table Egg Type	2.246	2.257	100
Hatching Egg Type	1.829	1.836	100
Broiler-Type Hatching	1.807	1.809	100
Egg-Type Hatching	2.195	2.289	104
Eggs Produced During Mar (Million)			
All Layers	6.320	6.448	102
Table Egg Type	5.404	5.490	102
Hatching Egg Type	916	958	105
Broiler-Type Hatching	853	892	105
Egg-Type Hatching	63	66	105
Layers on Apr 1 (1,000)			
All Layers	290,979	294,600	101
Table Egg Type	240,736	242,282	101
Hatching Egg Type	50,243	52,318	104
Broiler-Type Hatching	47,411	49,376	104
Egg-Type Hatching	2,832	2,942	104
Eggs per 100 Layers on Apr 1 (Number)			
All Layers	70.6	71.0	101
Table Egg Type	73.0	73.5	101
Hatching Egg Type	59.3	59.5	100
Broiler-Type Hatching	58.4	58.5	100
Egg-Type Hatching	75.2	76.0	101
Forced Molt Layers, Apr 1			
Percent Being Molting	2.7	3.4	126
Percent with Molt Completed	21.0	23.7	113

1/ Revised.

Eggs and Layers: Layers on Hand and Eggs Produced by Type.
and Forced Molt, United States, April-May 1994-95

Item	1994	1995 1/	1995 as % of 1994
Layers During Apr (1,000)			
All Layers	290,073	293,824	101
Table Egg Type	239,635	241,343	101
Hatching Egg Type	50,438	52,481	104
Broiler-Type Hatching	47,639	49,578	104
Egg-Type Hatching	2,799	2,903	104
Eggs per 100 Layers During Apr (Number)			
All Layers	2,094	2,101	100
Table Egg Type	2,160	2,169	100
Hatching Egg Type	1,776	1,789	101
Broiler-Type Hatching	1,755	1,761	100
Egg-Type Hatching	2,144	2,274	106
Eggs Produced During Apr (Million)			
All Layers	6,073	6,173	102
Table Egg Type	5,177	5,234	101
Hatching Egg Type	896	939	105
Broiler-Type Hatching	836	873	104
Egg-Type Hatching	60	66	110
Layers on May 1 (1,000)			
All Layers	289,125	293,008	101
Table Egg Type	238,514	240,381	101
Hatching Egg Type	50,611	52,627	104
Broiler-Type Hatching	47,855	49,769	104
Egg-Type Hatching	2,756	2,858	104
Eggs per 100 Layers on May 1 (Number)			
All Layers	69.0	69.1	100
Table Egg Type	70.9	71.1	100
Hatching Egg Type	59.8	60.2	101
Broiler-Type Hatching	58.8	59.2	101
Egg-Type Hatching	76.0	77.2	102
Forced Molt Layers, May 1			
Percent Being Molted	5.6	5.8	104
Percent with Molt Completed	20.2	22.3	110

1/ Preliminary.

Eggs and Layers: Layers on Hand and Eggs Produced by Type, and Forced Molt, March-April, 30 Selected States, 1994-95 1/

Item	1994	1995 2/	1995 as % of 1994
Layers During Mar (1,000)			
All Layers	274,525	278,968	102
Table Egg Type	227,480	230,200	101
Hatching Egg Type	47,045	48,768	104
Broiler-Type Hatching	44,345	45,968	104
Egg-Type Hatching	2,700	2,800	104
Eggs per 100 Layers During Mar (Number)			
All Layers	2,174	2,183	100
Table Egg Type	2,245	2,256	100
Hatching Egg Type	1,828	1,837	100
Broiler-Type Hatching	1,804	1,808	100
Egg-Type Hatching	2,222	2,321	104
Eggs Produced During Mar (Million)			
All Layers	5,968	6,089	102
Table Egg Type	5,108	5,193	102
Hatching Egg Type	860	896	104
Broiler-Type Hatching	800	831	104
Egg-Type Hatching	60	65	108
Layers on Apr 1 (1,000)			
All Layers	274,761	278,357	101
Table Egg Type	227,607	229,443	101
Hatching Egg Type	47,154	48,914	104
Broiler-Type Hatching	44,477	46,040	104
Egg-Type Hatching	2,677	2,874	107
Eggs per 100 Layers on Apr 1 (Number)			
All Layers	70.6	71.0	101
Table Egg Type	73.0	73.5	101
Hatching Egg Type	59.1	59.5	101
Broiler-Type Hatching	58.2	58.5	101
Egg-Type Hatching	74.8	75.9	101
Forced Molt Layers, Apr 1			
Percent Being Molting	2.7	3.4	126
Percent with Molt Completed	21.1	23.8	113
Pullets Less Than 20 Weeks of Age, Apr 1 (1,000)	75,828	72,160	95
Pullets Added During Mar (1,000)	17,827	21,181	119
Layers Sold During Mar (1,000)	15,264	17,156	112
Layers Died, Destroyed, or Disappeared For Any Reason During Mar (1,000)	2,834	2,657	94

1/ Revised.

2/ The 30 States are listed in the table on page 8.

Eggs and Layers: Layers on Hand and Eggs Produced by Type, and Forced Molt, April-May, 30 Selected States, 1994-95 1/

Item	1994	1995 2/	1995 as % of 1994
Layers During Apr (1,000)			
All Layers	273,750	277,632	101
Table Egg Type	226,489	228,618	101
Hatching Egg Type	47,261	49,014	104
Broiler-Type Hatching	44,627	46,187	103
Egg-Type Hatching	2,634	2,827	107
Eggs per 100 Layers During Apr (Number)			
All Layers	2,093	2,102	100
Table Egg Type	2,160	2,169	100
Hatching Egg Type	1,773	1,791	101
Broiler-Type Hatching	1,750	1,760	101
Egg-Type Hatching	2,164	2,299	106
Eggs Produced During Apr (Million)			
All Layers	5,730	5,836	102
Table Egg Type	4,892	4,958	101
Hatching Egg Type	838	878	105
Broiler-Type Hatching	781	813	104
Egg-Type Hatching	57	65	114
Layers on May 1 (1,000)			
All Layers	272,710	276,879	102
Table Egg Type	225,360	227,778	101
Hatching Egg Type	47,350	49,101	104
Broiler-Type Hatching	44,768	46,326	103
Egg-Type Hatching	2,582	2,775	107
Eggs per 100 Layers on May 1 (Number)			
All Layers	68.9	69.2	100
Table Egg Type	70.9	71.1	100
Hatching Egg Type	59.6	60.2	101
Broiler-Type Hatching	58.7	59.2	101
Egg-Type Hatching	75.6	77.0	102
Forced Molt Layers, May 1			
Percent Being Molted	5.6	5.8	104
Percent with Molt Completed	20.2	22.3	110
Pullets Less Than 20 Weeks of Age, May 1 (1,000)	77,623	71,463	92
Pullets Added During Apr (1,000)	20,448	20,094	98
Layers Sold During Apr (1,000)	16,723	17,794	106
Layers Died, Destroyed, or Disappeared For Any Reason During Apr (1,000)	2,680	2,784	104

1/ Preliminary.

2/ The 30 States are listed in the table on page 8.

Layers and Eggs: Layers on Hand and Eggs Produced by State
and United States, During March 1994-95 1/

State	Table Egg Layers in Flocks 30,000 and Above :		All Layers 2/ :		Eggs per 100 for All Layers 2/ :	
	1994	1995	1994	1995	1994	1995
	1,000				Number	
AL	5,013	4,736	11,476	11,620	2,030	2,005
AR	7,191	6,017	17,092	16,024	1,896	1,922
CA	25,077	25,487	25,751	26,073	2,225	2,178
CO	2,733	2,623	3,311	3,174	2,024	2,174
CT	3,434	3,359	3,641	3,549	2,252	2,282
FL	9,148	8,587	10,047	9,202	2,220	2,282
GA	11,304	10,412	19,020	18,109	2,124	2,098
HI	755	725	835	768	2,065	2,080
IL	2,823	2,642	2,993	2,839	2,172	2,325
IN	20,113	20,522	21,026	21,416	2,273	2,265
IA	13,683	14,640	14,451	15,525	2,235	2,190
ME	4,939	4,822	5,125	4,977	2,322	2,331
MD	2,640	3,242	3,261	3,823	2,147	2,223
MI	4,939	4,966	5,253	5,250	2,279	2,325
MN	9,660	10,253	10,540	11,096	2,182	2,217
MS	2,618	2,330	6,431	6,289	2,021	1,972
MO	6,158	5,865	6,815	6,728	2,172	2,155
NE	7,625	8,850	7,775	9,000	2,120	2,313
NY	3,455	3,483	3,795	3,840	2,345	2,396
NC	6,583	6,416	13,703	14,101	2,014	1,929
OH	20,019	21,928	20,420	22,263	2,267	2,313
OK	1,975	2,035	3,550	3,750	1,915	2,053
OR	2,549	2,330	2,753	2,536	2,216	2,287
PA	19,405	20,165	20,758	21,570	2,322	2,346
SC	4,051	4,065	5,033	5,075	2,265	2,207
SD	1,710	1,493	1,985	1,725	2,306	2,275
TX	12,609	12,398	15,750	15,726	2,102	2,137
VA	1,588	1,717	3,830	3,864	2,063	2,045
WA	4,516	5,257	4,763	5,531	2,372	2,242
WI	2,825	2,985	3,342	3,525	2,244	2,184
30 Sts	221,138	224,350	274,525	278,968	2,174	2,183
Oth						
Sts 3/	11,670	11,682	16,194	16,454	2,167	2,182
US	232,808	236,032	290,719	295,422	2,174	2,183

1/ 1995 revised.

2/ Includes all layers and eggs produced in both table egg and hatching egg flocks regardless of size.

3/ Estimates for individual States are not available.

Layers and Eggs: Layers on Hand and Eggs Produced by State
and United States, During April 1994-95 1/

State	Table Egg Layers in : Flocks 30,000 and Above : All Layers 2/				Eggs per 100 for All Layers 2/	
	1994	1995	1994	1995	1994	1995
	1,000				Number	
AL	5,094	4,641	11.571	11,630	1,962	1,917
AR	7,083	5,890	17.016	15,965	1,863	1,867
CA	25,183	24,962	25.851	25,536	2,097	2,091
CO	2,684	2,556	3.250	3,117	2,000	2,117
CT	3,400	3,412	3.607	3,596	2,135	2,225
FL	8,735	8,284	9.566	8,927	2,195	2,196
GA	10,888	10,184	18.620	17,921	2,041	2,070
HI	743	712	821	758	2,010	2,058
IL	2,970	2,581	3.151	2,774	2,158	2,199
IN	19,921	20,374	20.817	21,255	2,128	2,150
IA	13,620	14,925	14.400	15,790	2,160	2,103
ME	5,022	4,890	5.201	5,049	2,250	2,238
MD	2,617	3,388	3.134	3,953	2,106	2,125
MI	4,892	4,968	5.200	5,250	2,178	2,205
MN	9,593	10,218	10.456	11,078	2,142	2,130
MS	2,654	2,348	6.527	6,254	1,961	1,951
MO	6,008	5,765	6.653	6,628	2,044	2,127
NE	7,625	8,875	7.775	9,025	2,094	2,223
NY	3,427	3,379	3.768	3,727	2,256	2,254
NC	6,520	6,400	13.873	14,030	1,889	1,882
OH	20,474	21,878	20.860	22,256	2,234	2,233
OK	2,000	2,043	3.570	3,761	1,793	1,968
OR	2,539	2,366	2.738	2,572	2,191	2,216
PA	19,170	19,910	20.541	21,295	2,239	2,231
SC	4,091	4,071	5.116	5,065	2,209	2,152
SD	1,728	1,553	2.005	1,793	2,139	2,157
TX	12,607	12,381	15.801	15,776	2,025	2,035
VA	1,555	1,632	3.764	3,841	1,993	1,953
WA	4,582	5,279	4.836	5,560	2,213	2,176
WI	2,755	2,905	3.262	3,450	2,177	2,116
30 Sts	220,180	222,770	273,750	277,632	2,093	2,102
Oth						
Sts 3/	11,681	11,425	16,323	16,192	2,101	2,081
US	231,861	234,195	290,073	293,824	2,094	2,101

1/ 1995 preliminary.

2/ Includes all layers and eggs produced in both table egg and hatching egg flocks regardless of size.

3/ Estimates for individual States are not available.

Egg Production: By Type, State, and United States.
March 1994-95 1/

State	Total Production		Table Eggs 2/		Hatching Eggs 2/	
	1994	1995	1994	1995	1994	1995
	Million Eggs					
AL	233	233	115	109	118	124
AR	324	308	154	133	170	175
CA	573	568				
CO	67	69				
CT	82	81				
FL	223	210	205	199	18	11
GA	404	380	261	234	143	146
HI	17	16	17	16	0	0
IL	65	66	64	65	1	1
IN	478	485	467	475	11	10
IA	323	340				
ME	119	116				
MD	70	85	61	75	9	10
MI	120	122				
MN	230	246	221	236	9	10
MS	130	124	62	52	68	72
MO	148	145				
NE	165	208	165	208	0	0
NY	89	92				
NC	276	272	154	142	122	130
OH	463	515				
OK	68	77	43	49	25	28
OR	61	58	59	56	2	2
PA	482	506	465	488	17	18
SC	114	112	96	94	18	18
SD	46	39	46	39	0	0
TX	331	336	286	286	45	50
VA	79	79	40	40	39	39
WA	113	124				
WI	75	77				
30 Sts	5,968	6,089	5,108	5,193	860	896
0th Sts 3/	352	359	296	297	56	62
US	6,320	6,448	5,404	5,490	916	958

1/ 1995 revised.

2/ Data by type of flock not shown for some States to avoid disclosing individual operations.

3/ Estimates for individual States are not available.

Egg Production: By Type, State, and United States,
April 1994-95 1/

State	Total Production		Table Eggs 2/		Hatching Eggs 2/	
	1994	1995	1994	1995	1994	1995
	Million Eggs					
AL	227	223	113	100	114	123
AR	317	298	148	126	169	172
CA	542	534				
CO	65	66				
CT	77	80				
FL	210	196	193	185	17	11
GA	380	371	240	227	140	144
HI	17	16	17	16	0	0
IL	68	61	67	60	1	1
IN	443	457	432	447	11	10
IA	311	332				
ME	117	113				
MD	66	84	58	75	8	9
MI	113	116				
MN	224	236	215	226	9	10
MS	128	122	60	53	68	69
MO	136	141				
NE	163	201	163	201	0	0
NY	85	84				
NC	262	264	143	139	119	125
OH	466	497				
OK	64	74	42	48	22	26
OR	60	57	58	55	2	2
PA	460	475	443	458	17	17
SC	113	109	95	91	18	18
SD	43	39	43	39	0	0
TX	320	321	276	272	44	49
VA	75	75	39	37	36	38
WA	107	121				
WI	71	73				
30 Sts	5,730	5,836	4,892	4,958	838	878
Oth Sts 3/	343	337	285	276	58	61
US	6,073	6,173	5,177	5,234	896	939

1/ 1995 preliminary.

2/ Data by type of flock not shown for some States to avoid disclosing individual operations.

3/ Estimates for individual States are not available.

Forced Molt: Percent of All Layers by Month,
United States, 1994-95 1/

Month	Percent Being Molted		Percent with Molt Completed	
	1994	1995	1994	1995
	Percent			
Jan	4.5	4.6	22.4	23.8
Feb	5.4	6.4	21.4	23.6
Mar	3.7	4.8	21.1	24.0
Apr	2.7	3.4	21.0	23.7
May	5.6	5.8	20.2	22.3
Jun				
Jul				
Aug				
Sep				
Oct				
Nov				
Dec				

1/ As of first of month.

Forced Molt: Percent of All Layers by State
and United States, 1994-95 1/

State	May			
	Percent Being Molted		Percent with Molt Completed	
	1994	1995	1994	1995
	Percent			
AL	6.0	4.0	13.0	11.5
AR	4.5	5.0	11.5	12.5
CA	14.5	11.0	40.0	40.0
CO	6.0	6.0	23.0	24.5
CT	4.5	0.5	13.5	14.0
FL	10.0	15.0	35.0	28.5
GA	6.0	4.0	20.0	20.0
HI	7.5	7.0	43.5	51.5
IL	3.0	5.0	5.5	26.5
IN	2.5	4.0	27.5	31.5
IA	4.5	6.0	27.0	32.0
ME	0.0	0.5	1.0	0.5
MD	8.0	5.0	22.0	27.5
MI	4.5	6.5	12.0	15.0
MN	4.0	7.0	31.5	24.0
MS	3.0	2.5	17.0	16.0
MO	9.5	2.5	16.0	20.0
NE	5.0	5.0	15.0	21.5
NY	2.0	3.0	6.0	5.0
NC	3.5	2.5	13.0	16.5
OH	1.5	4.5	9.0	10.5
OK	0.5	1.5	5.0	14.0
OR	0.5	11.5	27.0	35.0
PA	4.5	5.0	10.5	20.0
SC	2.0	15.5	22.0	24.0
SD	9.0	2.5	39.0	32.5
TX	7.0	6.5	20.0	21.5
VA	5.0	8.5	16.0	15.0
WA	11.5	6.5	40.0	40.5
WI	7.0	4.5	21.5	26.0
30 Sts	5.6	5.8	20.2	22.3
Oth Sts 2/	5.0	5.4	20.6	21.6
US	5.6	5.8	20.2	22.3

1/ As of first of month.

2/ Estimates for individual States are not available.

Hatchery Production: Eggs in Incubators, Chicks Hatched,
and Placements by Type, United States, April-May 1994-95

Item	1994	1995	1995 as % of 1994
	1,000		Percent
Egg-Type			
Eggs in Incubators on May 1	31,935	32,385	101
Chicks Hatched During Apr	35,668	34,101	96
Chicks Hatched Jan thru Apr	133,458	132,127	99
Pullets Hatched During May for Intended:			
Placements in Hatchery Supply Flocks	277	317	114
7-18 Month Earlier 1/	2,787	3,072	110
Broiler-Type			
Eggs in Incubators on May 1	537,903	562,946	105
Chicks Hatched During Apr	627,051	662,372	106
Chicks Hatched Jan thru Apr	2,443,720	2,600,057	106
Pullets Hatched During May for Intended:			
Placements in Hatchery Supply Flocks	6,101	6,319	104
7-14 Months Earlier 2/	43,943	48,601	111

1/ 1995 includes pullet chicks hatched Oct 1993 through Sep 1994.

2/ 1995 includes pullet chicks hatched Feb 1994 through Sep 1994.

Egg-Type Eggs in Incubators: By Region and United States.
May 1, 1994-95

Geographic Division	1994	1995	1995 as % of 1994
	1,000		Percent
North Atlantic	5,558	4,495	81
E North Central	8,973	9,006	100
W North Central	5,611	4,905	87
South Atlantic	4,903	5,461	111
South Central	3,379	3,576	106
West	3,511	4,942	141
US	31,935	32,385	101

Regional Listing:

North Atlantic = CT, ME, MA, NH, NJ, NY, PA, RI, VT.

E North Central = IL, IN, MI, OH, WI.

W North Central = IA, KS, MN, MO, NE, ND, SD.

South Atlantic = DE, FL, GA, MD, NC, SC, VA, WV.

South Central = AL, AR, KY, LA, MS, OK, TN, TX.

West = AK, AZ, CA, CO, HI, ID, MT, NM, NV, OR, UT, WA, WY.

Egg-Type Chicks Hatched: By State and United States,
April 1994-95

State	April			Jan-Apr		
	1994	1995	1995 as % of 1994	1994	1995	1995 as % of 1994
	----- 1,000 -----		Percent	----- 1,000 -----		Percent
AR	1,202	1,198	100	4,930	4,409	89
FL	1,009	890	88	4,464	3,876	87
GA	2,183	1,687	77	6,413	6,990	109
IN	7,459	7,168	96	25,790	27,410	106
IA	2,489	2,662	107	9,372	10,194	109
KS	394	216	55	997	950	95
MN	1,974	2,115	107	8,139	8,246	101
MO	719	630	88	2,143	1,796	84
PA	4,901	3,301	67	18,186	13,164	72
Oth Sts 1/	13,338	14,234	107	53,024	55,092	104
US	35,668	34,101	96	133,458	132,127	99

1/ Not published separately to avoid disclosing data for individual operations.

Egg-Type Chicks Hatched: By Month, United States, 1993-95

Month:	By Months				Cumulative			
	1993	1994	1995	1995 as % of 1994	1993	1994	1995	1995 as % of 1994
	----- 1,000 -----			Percent	----- 1,000 -----			Percent
Jan	34,855	33,212	31,527	95	34,855	33,212	31,527	95
Feb	34,009	31,086	31,693	102	68,864	64,298	63,220	98
Mar	38,264	33,492	34,806	104	107,128	97,790	98,026	100
Apr	37,163	35,668	34,101	96	144,291	133,458	132,127	99
May	36,742	35,336			181,033	168,794		
Jun	35,587	31,986			216,620	200,780		
Jul	33,980	29,613			250,600	230,393		
Aug	31,455	31,295			282,055	261,688		
Sep	31,775	30,873			313,830	292,561		
Oct	31,634	31,766			345,464	324,327		
Nov	30,074	25,475			375,538	349,802		
Dec	30,448	29,072			405,986	378,874		

Intended Placements: Egg-Type Pullet Chicks for Hatchery Supply
Flocks by Month and Total, United States, 1993-95 1/

Month	Pullet Chicks Hatched				Cumulative Potential Placements Relative to Current Supply Flocks 7-18 Months Earlier 2/		
	1995 as % of:				1994		
	1993	1994	1995	1994	1993	1994	1995
	1,000			Percent	1,000		
Jan	193	197	236	120	2,529	2,806	2,916
Feb	119	186	251	135	2,553	2,812	2,937
Mar	268	259	356	137	2,604	2,754	3,027
Apr	251	277	317	114	2,655	2,787	3,072
May	275	334			2,637	2,801	3,091
Jun	267	254			2,696	2,690	3,156
Jul	243	264			2,738	2,782	3,013
Aug	219	309			2,750	2,786	3,052
Sep	270	315			2,596	2,853	3,117
Oct	251	270			2,678	2,844	3,214
Nov	158	223			2,751	2,870	3,254
Dec	268	125			2,764	2,929	
Total	2,782	3,013					

1/ Reported by leading breeders. Coverage may not be 100 percent. Includes expected pullet chicks from eggs sold during the preceding month at the rate of 125 pullet chicks per 30 dozen case of eggs.

2/ For April 1995, includes breeder pullet chicks hatched Oct 1993 through Sep 1994.

Broiler-Type Eggs in Incubators: By Region
and United States, May 1, 1994-95

Geographic Division	1994	1995	1995 as % of 1994
	1,000	Percent	
North Atlantic	11,569	11,781	102
E North Central	7,288	8,930	123
W North Central	14,562	18,169	125
South Atlantic	214,398	223,234	104
South Central	266,831	277,997	104
West	23,255	22,835	98
US	537,903	562,946	105

**Broiler-Type Chicks Hatched: Number by State
and United States, April 1994-95**

State	April			Jan-Apr		
	1994	1995	1995 as % of 1994	1994	1995	1995 as % of 1994
	1,000		Percent	1,000		Percent
AL	88,617	92,100	104	349,503	366,653	105
AR	103,175	102,220	99	405,665	404,833	100
DE	15,157	16,538	109	59,730	66,439	111
FL	11,825	10,613	90	49,092	38,194	78
GA	89,182	96,547	108	344,982	376,433	109
MD	30,935	31,828	103	126,433	125,148	99
MS	50,611	53,652	106	194,616	213,456	110
NC	58,786	63,730	108	228,209	245,159	107
PA	11,814	11,373	96	45,476	43,916	97
SC	15,372	15,254	99	58,453	61,068	104
TX	34,325	39,398	115	137,852	151,358	110
VA	22,976	23,789	104	85,774	93,951	110
CA TN & WV	33,143	33,712	102	127,440	133,178	105
15 Sts 1/	565,918	590,754	104	2,213,225	2,319,786	105
OR & WA	5,900	5,669	96	23,378	22,149	95
Oth Sts 2/	55,233	65,949	119	207,117	258,122	125
US	627,051	662,372	106	2,443,720	2,600,057	106

1/ States in the weekly hatchery production estimating program.

2/ Not published separately to avoid disclosing data for individual operations.

Broiler Chicks Hatched: By Month, United States, 1993-95

Month	By Months				Cumulative			
	1993	1994	1995	1995 as % of 1994	1993	1994	1995	1995 as % of 1994
	1,000			Percent	1,000			Percent
Jan	598,798	618,112	661,389	107	598,798	618,112	661,389	107
Feb	547,831	558,590	598,962	107	1,146,629	1,176,702	1,260,351	107
Mar	622,983	639,967	677,334	106	1,769,612	1,816,669	1,937,685	107
Apr	600,861	627,051	662,372	106	2,370,473	2,443,720	2,600,057	106
May	634,371	658,690			3,004,844	3,102,410		
Jun	619,453	647,163			3,624,297	3,749,573		
Jul	619,009	646,456			4,243,306	4,396,029		
Aug	612,381	653,710			4,855,687	5,049,739		
Sep	582,781	625,867			5,438,468	5,675,606		
Oct	584,260	617,957			6,022,728	6,293,563		
Nov	574,803	597,276			6,597,531	6,890,839		
Dec	623,237	658,914			7,220,768	7,549,753		

Intended Placements: Broiler-Type Pullet Chicks for Hatchery
Supply Flocks by Month and Total, 1993-95 1/

Month	Pullet Chicks Hatched			1995 as % of: 1994	Cumulative Potential Placements Relative to Current Supply Flocks 7-14 Months Earlier 2/		
	1993	1994	1995		1993	1994	1995
	----- 1,000 -----	----- 1,000 -----	----- 1,000 -----		----- 1,000 -----	----- 1,000 -----	----- 1,000 -----
US							
Place-							
ments							
Jan	5,664	5,989	5,748	96	40.202	42.665	47,272
Feb	4,549	5,518	5,481	99	40.819	43.906	47,859
Mar	5,678	6,301	6,161	98	40.908	44.486	48,254
Apr	5,531	6,101	6,319	104	41.133	43.943	48,601
May	5,944	6,266			41.866	44.907	49,425
Jun	5,568	5,911			41.358	44,746	48,943
Jul	5,967	6,104			40.871	44,884	49,255
Aug	5,585	6,064			41.704	44,929	48,737
Sep	5,121	6,336			41.083	44,879	48,307
Oct	5,513	6,342			41.330	45,213	48,364
Nov	5,517	5,819			41.780	45,729	48,576
Dec	5,669	6,413			42.504	46,874	48,620
Annual							
Total	66,306	73,164					
Total							
Place-							
ments3/							
Jan	7,098	7,168	7,038	98			
Feb	5,664	6,829	7,176	105			
Mar	6,909	7,544	7,577	100			
Apr	6,420	7,234	7,835	108			
May	7,182	7,394					
Jun	6,723	7,153					
Jul	7,114	7,146					
Aug	6,587	7,290					
Sep	6,177	7,545					
Oct	6,634	7,959					
Nov	6,718	7,251					
Dec	6,949	7,908					
Annual							
Total	80,175	88,421					

1/ Reported by leading breeders. Coverage may not be 100 percent. Includes expected pullet chicks from eggs sold during the preceding month at the rate of 125 pullet chicks per 30 dozen case of eggs.

2/ For Apr 1995, includes breeder pullet chicks hatched Feb 1994 through Sep 1994.

3/ U.S. production of intended placements worldwide.

Procedures and Reliability

Data Sources: Primary data for the "Chickens and Eggs" report are from weekly and/or monthly questionnaires sent to producers. An attempt is made to collect information for layer and egg estimates from each known contractor and independent producer who has over 30,000 table egg layers. Coverage for operations with less than 30,000 table egg layers are estimated each month based on data reported in December. Approximately 900 contractors, independent egg producers, and started pullet operations are contacted each month. All known hatcheries, approximately 360, are contacted for information on a weekly and/or monthly basis.

Revisions: The previous month's estimates are subject to revision if late reports or corrected data indicates a different level. Additionally, revisions needed after the monthly report will be made at the end of the marketing year and published in the annual summaries of "Layers and Egg Production" and "Hatchery Production".

Procedures and Reliability: Operations are mailed a questionnaire and given adequate time to respond by mail. Those that do not respond are phoned. Great care is exercised to ensure that all operations are accounted for during each survey period. However, there are usually missing reports that must be accounted for in the estimates.

Sound statistical methodology is employed to derive estimates from the reported data. All data are checked for unusual values. All operations' data are compared to their own past operating profiles and also to trends from other operations. Data for missing operations are estimated based on similar operations or historical data. Survey data are subject to non-sampling errors such as omissions and mistakes in reporting and in processing. While these errors cannot be measured directly, they are minimized by reviewing all data for consistency and reasonableness.

Egg-type chicks hatched are comprised of all chicks of egg-type domesticated breeds including males and chicks destined for hatchery supply flocks and research purposes. The relationship of chicks hatched to chicken inventory and poultry marketings is carefully monitored. The disposition of egg-type chicks hatched prior to placement into the laying flock can vary significantly, which can make comparisons to changes in layer inventory inconsistent over time.

Intended placement data reported by leading breeders include pullet chicks expected from eggs sold the preceding month. The breeders in this report account for a large percentage of replacement pullets for hatchery supply flocks. Production of replacement pullets by these breeders indicates the number of pullets available to hatchery egg supply flocks several months before the pullets will actually move into the flocks.

The next "Chickens and Eggs" report will be released at 3 p.m. ET on June 23, 1995.

The United States Department of Agriculture (USDA) prohibits discrimination in its programs on the basis of race, color, national origin, sex, religion, age, disability, political beliefs, and marital or familial status. Persons with disabilities who require alternative means for communication of program information (braille, large print, audiotape, etc.) should contact the USDA Office of Communications at (202) 720-5881 (voice) or (202) 720-7808 (TDD).

To file a complaint, write the Secretary of Agriculture, USDA, Washington, D.C., 20250, or call (202) 720-7327 (voice) or (202) 720-1127 (TDD). USDA is an equal employment opportunity employer.

☒ **Want to subscribe?** ☒ **Time to renew?**

Subscribe to Chickens and Eggs today! If you already subscribe to this timely periodical, note that expiration information about your subscription appears on the top line of your mailing label. **Expiration information will appear in one of two formats:** 1-PEC-2 (this means you have TWO issues remaining in your subscription) or APR95 (expiration date is April 1995). Disregard this notice if no renewal information appears. Call 1-800-999-6779, and tell us whether you want to subscribe or renew, or return this form to: **ERS-NASS, 341 Victory Drive, Herndon, VA 22070.**

Chickens and Eggs

- ☐ Yes! I want to **start** my subscription.
☐ Yes! I want to **renew** my subscription.

	1 Year	2 Years	3 Years
Domestic	<input type="checkbox"/> \$36.00	<input type="checkbox"/> \$70.00	<input type="checkbox"/> \$105.00
Foreign	<input type="checkbox"/> \$45.00	<input type="checkbox"/> \$87.50	<input type="checkbox"/> \$131.25

New subscribers:

Name: _____
Address: _____
City, State, Zip: _____
Daytime phone: (____) _____

Renewals:

ATTACH MAILING LABEL HERE

Payment method:

- ☐ Bill me (domestic orders only). Use purchase orders, checks drawn on U.S. banks, cashier's checks, or international money orders. **Make payable to ERS-NASS.**
☐ Enclosed is \$_____.

Credit card orders: ☐ MasterCard ☐ Visa Total charges \$_____

Credit card number:

Card expiration date:
Month/Year

**For fastest service, call our toll-free order desk 1-800-999-6779,
in the U.S. and Canada; other areas please call 703-834-0125,
or FAX this page to 703-834-0110.**

Statistical Bulletin Order Form

The U.S. Department of Agriculture's National Agricultural Statistics Service will publish a series of 18 Statistical Bulletins (SB895-SB912) containing final estimates for the 1986-1993 period. Data previously published during the 1986-1993 period have been reviewed against survey indications and administrative data such as those from exports, imports, slaughter, crushings, and the 1992 Census of Agriculture. These bulletins are a continuation of Statistical Bulletins (SB792-SB802) published in 1988 and 1989.

QUANTITY (\$10 each)		BULLETIN NUMBER	STATISTICAL BULLETIN	RELEASE DATE
PAPER	DISKETTES			
		SB-904	Hogs and Pigs, 1988-1992	12/16/94
		SB-896	Field Crops, 1987-1992	12/19/94
		SB-897	Stocks of Grains, Oilseeds, and Hay, 1988-1993	12/19/94
		SB-898	Rice Stocks, 1988-1993	12/19/94
		SB-902	Vegetables, 1987-1992	01/06/95
		SB-906	Sheep and Goats, 1989-1993	01/13/95
		SB-908	Chickens and Eggs, 1988-1993	01/18/95
		SB-905	Cattle, 1989-1993	01/20/95
		SB-909	Milk, 1988-1992	02/02/95
		SB-911	Turkeys, 1988-1993	03/23/95
		SB-912	Honey, 1986-1992	03/28/95
		SB-907	Meat Animals, PDI, 1988-1992	03/30/95
		SB-910	Poultry Production and Value, 1988-1993	05/12/95
		SB-900	Noncitrus Fruits and Nuts, 1987-1992	06/05/95
		SB-895	Farms and Land in Farms, 1987-1993	07/28/95
		SB-899	Citrus Fruits, 1987-1992	08/07/95
		SB-901	Potatoes and Sweetpotatoes, 1987-1992	08/17/95
		SB-903	Crop Values, 1987-1992	09/25/95
		Add 25% for shipment to foreign addresses (includes Canada) (Total Bulletins Ordered X \$10 = TOTAL COST \$)		

Publications may be obtained in hard copy or on diskette by calling the ERS-NASS order desk toll free at 1-800-999-6779 or by mail from ERS-NASS, 341 Victory Drive, Herndon, VA 22070.

Bulletins cost \$10.00 each for paper products or 3.5" ASCII diskettes. To order bulletins by mail, return this form along with your **check payable to ERS-NASS**. The bulletins will also be available on Internet through the Mann Library at Cornell University (gopher.usda.mannlib.cornell.edu 70) at no charge.

Thank you for your order.

Name: _____
 Address: _____
 City, State, Zip: _____
 Phone: _____
