

Chickens and Eggs

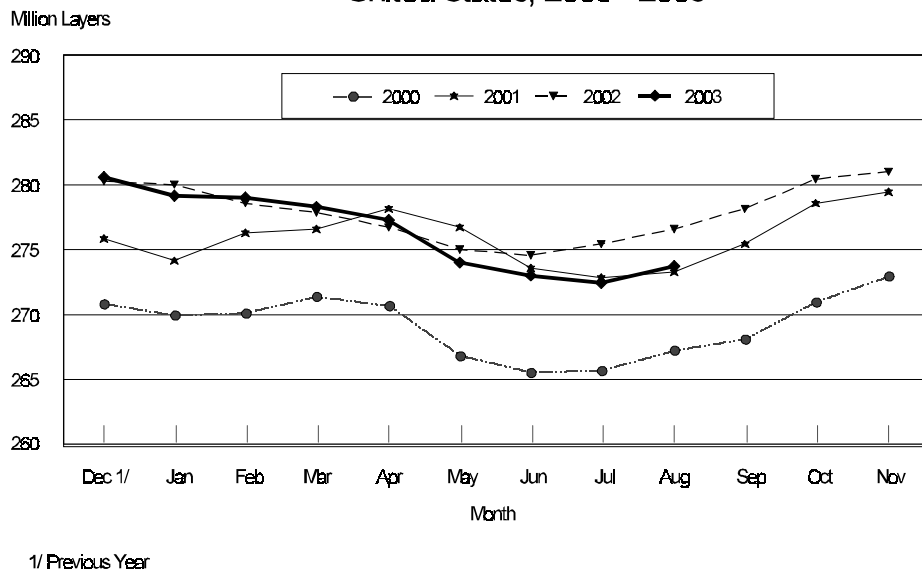
Released August 22, 2003, by the National Agricultural Statistics Service (NASS), Agricultural Statistics Board, U.S. Department of Agriculture. For information on "Chickens and Eggs" call Tom Kruchten at (202) 690-4870, for "Hatch" call Jody Roberts at (202) 690-8632, office hours 7:30 a.m. to 4:00 p.m. ET.

July Egg Production Down Slightly

U.S. egg production totaled 7.34 billion during July 2003, down slightly from last year. Production included 6.26 billion table eggs and 1.09 billion hatching eggs, of which 1.02 billion were broiler-type and 61.0 million were egg-type. The total number of layers during July 2003 averaged 332 million, down 1 percent from a year earlier. July egg production per 100 layers was 2,214 eggs, up 1 percent from July 2002.

July 2003 contained 23 weekdays, one holiday and four Saturdays, the same as July 2002.

Table Egg Layers First of Month United States, 2000 - 2003



All layers in the U.S. on August 1, 2003, totaled 332 million, down 1 percent from a year ago. The 332 million layers consisted of 274 million layers producing table or commercial type eggs, 55.6 million layers producing broiler-type hatching eggs, and 2.59 million layers producing egg-type hatching eggs. Rate of lay per day on August 1, 2003, averaged 71.2 eggs per 100 layers, up 1 percent from a year ago.

Laying flocks in the 30 major egg producing States produced 6.86 billion eggs during July 2003, down slightly from a year ago. The average number of layers during July, at 309 million, was down 1 percent from a year ago.

Individual State estimates are available for the 30 major egg producing States. These States are listed on page 8 of this release and account for approximately 94 percent of the total U.S. egg production. Production for the other States are grouped into an "Other States" category and combined with the 30 States published individually to obtain a U.S. estimate. Individual State estimates for "Other States" are available annually in the "**Chickens and Eggs Summary**" report.

Egg-Type Chicks Hatched Up Slightly

Egg-type chicks hatched during July totaled 35.6 million, up slightly from July 2002. Eggs in incubators totaled 30.7 million on August 1, 2003, down 6 percent from a year ago.

Domestic placements of egg-type pullet chicks for future hatchery supply flocks by leading breeders totaled 226,000 during July 2003, down 20 percent from July 2002.

Broiler Hatch Down 1 Percent

The July 2003 hatch of broiler-type chicks, at 777 million, was down 1 percent from July of the previous year. There were 641 million eggs in incubators on August 1, 2003, down 1 percent from a year earlier.

Leading breeders placed 7.1 million broiler-type pullet chicks for future domestic hatchery supply flocks during July 2003, up 7 percent from July 2002.

**All Layers: Average Number on Hand During the Month,
United States, 2000-03**

Month	2000	2001	2002	2003
	<i>1,000 Layers</i>	<i>1,000 Layers</i>	<i>1,000 Layers</i>	<i>1,000 Layers</i>
Dec ¹	328,878	332,283	339,105	337,473
Jan	328,657	333,748	338,966	337,900
Feb	329,941	335,763	337,991	337,881
Mar	330,961	336,822	337,447	337,513
Apr	329,185	337,141	336,776	335,780
May	326,288	335,163	335,865	333,778
Jun	325,057	332,928	335,412	332,417
Jul	325,663	332,244	335,498	331,702
Aug	325,853	332,808	336,159	
Sep	326,337	335,276	337,264	
Oct	328,278	337,593	338,159	
Nov	330,830	338,366	337,808	

¹ December preceding year.

**Eggs: Production During the Month by Type,
United States, 2002-03**

Month	Total Eggs		Table Eggs		Hatching Eggs	
	2002	2003	2002	2003	2002	2003
	<i>Million Eggs</i>	<i>Million Eggs</i>	<i>Million Eggs</i>	<i>Million Eggs</i>	<i>Million Eggs</i>	<i>Million Eggs</i>
Dec ¹	7,420	7,381	6,343	6,325	1,076	1,055
Jan	7,264	7,329	6,170	6,246	1,093	1,082
Feb	6,581	6,618	5,592	5,629	988	988
Mar	7,417	7,362	6,312	6,255	1,104	1,107
Apr	7,105	7,128	6,016	6,045	1,089	1,083
May	7,297	7,275	6,161	6,148	1,135	1,127
Jun	7,126	7,053	6,037	5,978	1,089	1,075
Jul	7,347	7,343	6,243	6,257	1,104	1,085
Aug	7,356		6,263		1,093	
Sep	7,147		6,100		1,046	
Oct	7,412		6,345		1,067	
Nov	7,226		6,204		1,020	
During Year	86,698	57,489	73,786	48,883	12,904	8,602

¹ December preceding year.

**Layers and Eggs: Layers on Hand and Eggs Produced by Type,
and Forced Molt, United States, June-July 2002-03**

Item	Unit	2002	2003	2003 as % of 2002
Layers During Jun	1,000			
All Layers		335,412	332,417	99
Table Egg Type		275,021	272,763	99
Hatching Egg Type		60,391	59,654	99
Broiler-Type Hatching		57,797	57,003	99
Egg-Type Hatching		2,594	2,651	102
Eggs per 100 Layers During Jun	Number			
All Layers		2,125	2,122	100
Table Egg Type		2,195	2,192	100
Hatching Egg Type		1,803	1,802	100
Broiler-Type Hatching		1,780	1,781	100
Egg-Type Hatching		2,313	2,263	98
Eggs Produced During Jun	Million			
All Layers		7,126	7,053	99
Table Egg Type		6,037	5,978	99
Hatching Egg Type		1,089	1,075	99
Broiler-Type Hatching		1,029	1,015	99
Egg-Type Hatching		60	60	100
Layers on Jul 1	1,000			
All Layers		335,236	331,560	99
Table Egg Type		275,484	272,461	99
Hatching Egg Type		59,752	59,099	99
Broiler-Type Hatching		57,242	56,500	99
Egg-Type Hatching		2,510	2,599	104
Eggs per 100 Layers on Jul 1	Number			
All Layers		70.9	71.4	101
Table Egg Type		73.2	74.0	101
Hatching Egg Type		60.2	59.7	99
Broiler-Type Hatching		59.4	58.9	99
Egg-Type Hatching		78.0	76.6	98
Forced Molt Layers on Jul 1	Percent			
Percent Being Molted		3.7	4.3	116
Percent with Molt Completed		22.8	23.8	104
Layers Sold for Slaughter During Jun	1,000	15,991	14,310	89
Layers Rendered, Died, Destroyed, Composted or Disappeared For Any Reason During Jun	1,000	4,323	4,943	114
Pullets Less Than 20 Weeks of Age, Jul 1	1,000	94,865	98,819	104
Pullets Added During Jun ¹	1,000	23,006	21,285	93

¹ Pullet chicks one day old added to pullet flocks.

**Layers and Eggs: Layers on Hand and Eggs Produced by Type,
and Forced Molt, United States, July-August 2002-03**

Item	Unit	2002 ¹	2003	2003 as % of 2002
Layers During Jul	1,000			
All Layers		335,498	331,702	99
Table Egg Type		276,072	273,065	99
Hatching Egg Type		59,426	58,637	99
Broiler-Type Hatching		56,830	56,036	99
Egg-Type Hatching		2,596	2,601	100
Eggs per 100 Layers During Jul	Number			
All Layers		2,190	2,214	101
Table Egg Type		2,261	2,291	101
Hatching Egg Type		1,858	1,850	100
Broiler-Type Hatching		1,834	1,827	100
Egg-Type Hatching		2,388	2,345	98
Eggs Produced During Jul	Million			
All Layers		7,347	7,343	100
Table Egg Type		6,243	6,257	100
Hatching Egg Type		1,104	1,085	98
Broiler-Type Hatching		1,042	1,024	98
Egg-Type Hatching		62	61	98
Layers on Aug 1	1,000			
All Layers		335,717	331,791	99
Table Egg Type		276,640	273,644	99
Hatching Egg Type		59,077	58,147	98
Broiler-Type Hatching		56,403	55,555	98
Egg-Type Hatching		2,674	2,592	97
Eggs per 100 Layers on Aug 1	Number			
All Layers		70.3	71.2	101
Table Egg Type		72.6	73.7	102
Hatching Egg Type		59.7	59.5	100
Broiler-Type Hatching		59.0	58.8	100
Egg-Type Hatching		75.3	76.0	101
Forced Molt Layers, Aug 1	Percent			
Percent Being Molted		4.6	4.3	93
Percent with Molt Completed		21.9	23.5	107
Layers Sold for Slaughter During Jul	1,000	15,258	14,839	97
Layers Rendered, Died, Destroyed. Composted or Disappeared For Any Reason During Jul	1,000	4,604	5,208	113
Pullets Less Than 20 Weeks of Age, Aug 1	1,000	94,559	98,991	105
Pullets Added During Jul ²	1,000	22,325	23,855	107

¹ Revised.

² Pullet chicks one day old added to pullet flocks.

**Layers and Eggs: Layers on Hand and Eggs Produced by Type, and Forced
Molt, 30 Selected States, June-July, 2002-03 ¹**

Item	Unit	2002	2003	2003 as % of 2002
Layers During Jun	1,000			
All Layers		313,786	310,072	99
Table Egg Type		258,385	255,253	99
Hatching Egg Type		55,401	54,819	99
Broiler-Type Hatching		52,890	52,261	99
Egg-Type Hatching		2,511	2,558	102
Eggs per 100 Layers During Jun	Number			
All Layers		2,125	2,121	100
Table Egg Type		2,194	2,190	100
Hatching Egg Type		1,805	1,800	100
Broiler-Type Hatching		1,781	1,778	100
Egg-Type Hatching		2,310	2,267	98
Eggs Produced During Jun	Million			
All Layers		6,668	6,578	99
Table Egg Type		5,668	5,591	99
Hatching Egg Type		1,000	987	99
Broiler-Type Hatching		942	929	99
Egg-Type Hatching		58	58	100
Layers on Jul 1	1,000			
All Layers		313,648	309,272	99
Table Egg Type		258,802	254,916	98
Hatching Egg Type		54,846	54,356	99
Broiler-Type Hatching		52,415	51,848	99
Egg-Type Hatching		2,431	2,508	103
Eggs per 100 Layers on Jul 1	Number			
All Layers		70.9	71.5	101
Table Egg Type		73.1	74.0	101
Hatching Egg Type		60.2	59.8	99
Broiler-Type Hatching		59.4	59.0	99
Egg-Type Hatching		77.8	76.7	99
Forced Molt Layers on Jul 1	Percent			
Percent Being Molted		3.7	4.4	119
Percent with Molt Completed		22.4	23.4	104
Layers Sold for Slaughter During Jun	1,000	14,630	13,240	90
Layers Rendered, Died, Destroyed, Composted or Disappeared For Any Reason During Jun	1,000	4,031	4,624	115
Pullets Less Than 20 Weeks of Age, Jul 1	1,000	89,094	92,451	104
Pullets Added During Jun ²	1,000	21,574	19,920	92

¹ The 30 States are listed in the table on page 8.

² Pullet chicks one day old added to pullet flocks.

**Layers and Eggs: Layers on Hand and Eggs Produced by Type, and Forced
Molt, 30 Selected States, July-August, 2002-03 ¹**

Item	Unit	2002 ²	2003	2003 as % of 2002
Layers During Jul	1,000			
All Layers		313,948	309,347	99
Table Egg Type		259,340	255,483	99
Hatching Egg Type		54,608	53,864	99
Broiler-Type Hatching		52,091	51,354	99
Egg-Type Hatching		2,517	2,510	100
Eggs per 100 Layers During Jul	1,000			
All Layers		2,191	2,217	101
Table Egg Type		2,261	2,294	101
Hatching Egg Type		1,861	1,853	100
Broiler-Type Hatching		1,835	1,828	100
Egg-Type Hatching		2,384	2,351	99
Eggs Produced During Jul	Million			
All Layers		6,880	6,858	100
Table Egg Type		5,864	5,860	100
Hatching Egg Type		1,016	998	98
Broiler-Type Hatching		956	939	98
Egg-Type Hatching		60	59	98
Layers on Aug 1	1,000			
All Layers		314,214	309,380	98
Table Egg Type		259,861	256,032	99
Hatching Egg Type		54,353	53,348	98
Broiler-Type Hatching		51,756	50,845	98
Egg-Type Hatching		2,597	2,503	96
Eggs per 100 Layers on Aug 1	Number			
All Layers		70.4	71.4	101
Table Egg Type		72.6	73.9	102
Hatching Egg Type		59.9	59.6	99
Broiler-Type Hatching		59.1	58.8	99
Egg-Type Hatching		75.9	76.1	100
Forced Molt Layers, Aug 1	Percent			
Percent Being Molted		4.7	4.2	89
Percent with Molt Completed		21.5	23.0	107
Layers Sold for Slaughter During Jul	1,000	14,020	13,983	100
Layers Rendered, Died, Destroyed, Composted or Disappeared For Any Reason During Jul	1,000	4,410	4,987	113
Pullets Less Than 20 Weeks of Age, Aug 1	1,000	88,706	92,596	104
Pullets Added During Jul ³	1,000	20,939	22,108	106

¹ The 30 States are listed in the table on page 8.

² Revised.

³ Pullet chicks one day old added to pullet flocks.

**Layers and Eggs: Layers on Hand and Eggs Produced by State
and United States, During June 2002-03**

State	Table Egg Layers in Flocks 30,000 and Above		All Layers ¹		Eggs per 100 for All Layers ¹	
	2002	2003	2002	2003	2002	2003
	<i>1,000</i>	<i>1,000</i>	<i>1,000</i>	<i>1,000</i>	<i>Number</i>	<i>Number</i>
AL	2,230	2,004	10,178	9,620	1,818	1,861
AR	4,630	4,347	14,949	15,268	1,860	1,821
CA	22,963	19,033	23,593	19,561	2,137	2,111
CO	3,253	3,283	3,778	3,790	2,223	2,348
CT	3,030	2,763	3,087	2,820	2,235	2,199
FL	9,737	10,205	10,442	10,755	2,116	2,111
GA	10,155	10,996	19,973	20,554	1,968	1,980
HI	479	456	532	494	1,805	1,883
IL	3,130	3,375	3,359	3,603	2,143	2,165
IN	21,414	21,970	22,091	22,611	2,232	2,220
IA	36,139	37,131	36,966	37,923	2,178	2,154
ME	4,276	4,073	4,334	4,126	2,100	2,254
MD	2,916	2,404	3,169	2,615	2,272	2,141
MI	6,530	6,427	6,786	6,678	2,166	2,186
MN	10,933	10,460	11,653	11,070	2,240	2,204
MS	1,764	1,844	6,768	6,864	1,921	1,967
MO	5,454	5,375	6,872	6,793	2,197	2,238
NE	11,492	11,604	11,592	11,704	2,165	2,256
NY	3,595	3,362	3,807	3,607	2,338	2,357
NC	3,132	3,301	11,062	10,869	1,871	1,951
OH	30,060	28,478	30,571	28,981	2,182	2,108
OK	2,056	1,939	4,253	4,066	1,869	1,845
OR	2,447	2,661	2,627	2,847	2,322	2,213
PA	22,045	22,729	23,466	24,106	2,301	2,269
SC	4,148	4,152	5,180	5,314	2,143	2,051
SD	2,123	2,673	2,323	2,873	1,980	2,193
TX	13,661	14,017	18,073	18,293	2,152	2,148
VA	1,170	1,203	2,916	3,260	1,852	1,963
WA	5,190	4,782	5,269	4,860	2,202	2,243
WI	3,515	3,634	4,117	4,147	2,210	2,315
30 Sts	253,667	250,681	313,786	310,072	2,125	2,121
Oth Sts ²	15,464	16,371	21,626	22,345	2,118	2,126
US	269,131	267,052	335,412	332,417	2,125	2,122

¹ Includes all layers and eggs produced in both table egg and hatching egg flocks regardless of size.

² Estimates for individual States are not available.

**Layers and Eggs: Layers on Hand and Eggs Produced by State
and United States, During July 2002-03**

State	Table Egg Layers in Flocks 30,000 and Above		All Layers ¹		Eggs per 100 for All Layers ¹	
	2002	2003	2002	2003	2002	2003
	<i>1,000</i>	<i>1,000</i>	<i>1,000</i>	<i>1,000</i>	<i>Number</i>	<i>Number</i>
AL	2,147	2,122	9,972	9,749	1,875	1,877
AR	4,427	4,437	14,567	15,361	1,936	1,894
CA	22,842	18,826	23,425	19,272	2,208	2,262
CO	3,363	3,243	3,863	3,721	2,330	2,446
CT	3,030	2,735	3,090	2,798	2,330	2,216
FL	9,602	10,265	10,312	10,813	2,133	2,220
GA	10,508	10,953	20,124	20,337	1,973	2,065
HI	488	468	540	504	1,852	1,925
IL	2,958	3,434	3,190	3,665	2,132	2,374
IN	21,593	21,686	22,232	22,281	2,254	2,262
IA	36,628	37,843	37,478	38,641	2,289	2,316
ME	4,172	4,132	4,230	4,185	2,270	2,294
MD	2,935	2,424	3,139	2,608	2,389	2,109
MI	6,564	6,378	6,815	6,629	2,274	2,233
MN	10,740	10,393	11,478	11,003	2,291	2,281
MS	1,757	1,841	6,794	6,795	2,016	2,001
MO	5,570	5,472	6,990	6,860	2,303	2,318
NE	11,522	11,636	11,622	11,736	2,246	2,326
NY	3,611	3,278	3,816	3,515	2,385	2,475
NC	3,217	3,390	11,029	10,663	1,922	2,026
OH	30,229	28,347	30,739	28,842	2,238	2,254
OK	2,054	1,937	4,277	4,045	1,906	1,904
OR	2,459	2,676	2,649	2,866	2,265	2,373
PA	22,057	22,457	23,457	23,823	2,353	2,351
SC	4,256	4,155	5,298	5,254	2,171	2,227
SD	2,120	2,790	2,320	2,990	1,983	2,274
TX	13,827	14,010	18,199	18,239	2,225	2,204
VA	1,215	1,162	2,909	3,143	1,994	2,004
WA	5,161	4,767	5,236	4,842	2,330	2,396
WI	3,556	3,656	4,158	4,167	2,381	2,328
30 Sts	254,608	250,913	313,948	309,347	2,191	2,217
Oth Sts ²	15,560	16,443	21,550	22,355	2,167	2,170
US	270,168	267,356	335,498	331,702	2,190	2,214

¹ Includes all layers and eggs produced in both table egg and hatching egg flocks regardless of size.

² Estimates for individual States are not available.

**Egg Production: By Type, State, and United States,
June 2002-03**

State	Total Production		Table Eggs ¹		Hatching Eggs ¹	
	2002	2003	2002	2003	2002	2003
	<i>Million Eggs</i>	<i>Million Eggs</i>	<i>Million Eggs</i>	<i>Million Eggs</i>	<i>Million Eggs</i>	<i>Million Eggs</i>
AL	185	179	45	45	140	134
AR	278	278	99	89	179	189
CA	504	413				
CO	84	89				
CT	69	62				
FL	221	227	209	217	12	10
GA	393	407	214	235	179	172
HI	9.6	9.3	9.6	9.3	0	0
IL	72	78	69	75	3	3
IN	493	502	481	491	12	11
IA	805	817				
ME	91	93				
MD	72	56	68	53	4	3
MI	147	146				
MN	261	244	252	235	9	9
MS	130	135	40	44	90	91
MO	151	152				
NE	251	264	251	264	0	0
NY	89	85				
NC	207	212	72	80	135	132
OH	667	611				
OK	80	75	46	43	34	32
OR	61	63	59	61	2	2
PA	540	547	522	531	18	16
SC	111	109	92	89	19	20
SD	46	63	46	63	0	0
TX	389	393				
VA	54	64	24	28	30	36
WA	116	109				
WI	91	96				
30 Sts	6,668	6,578	5,668	5,591	1,000	987
Oth Sts ²	458	475	369	387	89	88
US	7,126	7,053	6,037	5,978	1,089	1,075

¹ Data by type of flock not shown for some States to avoid disclosing individual operations.

² Estimates for individual States are not available.

**Egg Production: By Type, State, and United States,
July 2002-03**

State	Total Production		Table Eggs ¹		Hatching Eggs ¹	
	2002	2003	2002	2003	2002	2003
	<i>Million Eggs</i>	<i>Million Eggs</i>	<i>Million Eggs</i>	<i>Million Eggs</i>	<i>Million Eggs</i>	<i>Million Eggs</i>
AL	187	183	45	46	142	137
AR	282	291	99	99	183	192
CA	517	436				
CO	90	91				
CT	72	62				
FL	220	240	208	229	12	11
GA	397	420	216	246	181	174
HI	10.0	9.7	10.0	9.7	0	0
IL	68	87	65	84	3	3
IN	501	504	490	493	11	11
IA	858	895				
ME	96	96				
MD	75	55	72	52	3	3
MI	155	148				
MN	263	251	253	242	10	9
MS	137	136	42	44	95	92
MO	161	159				
NE	261	273	261	273	0	0
NY	91	87				
NC	212	216	77	85	135	131
OH	688	650				
OK	82	77	47	45	35	32
OR	60	68	58	66	2	2
PA	552	560	535	544	17	16
SC	115	117	96	98	19	19
SD	46	68	46	68	0	0
TX	405	402				
VA	58	63	28	27	30	36
WA	122	116				
WI	99	97				
30 Sts	6,880	6,858	5,864	5,860	1,016	998
Oth Sts ²	467	485	379	397	88	87
US	7,347	7,343	6,243	6,257	1,104	1,085

¹ Data by type of flock not shown for some States to avoid disclosing individual operations.

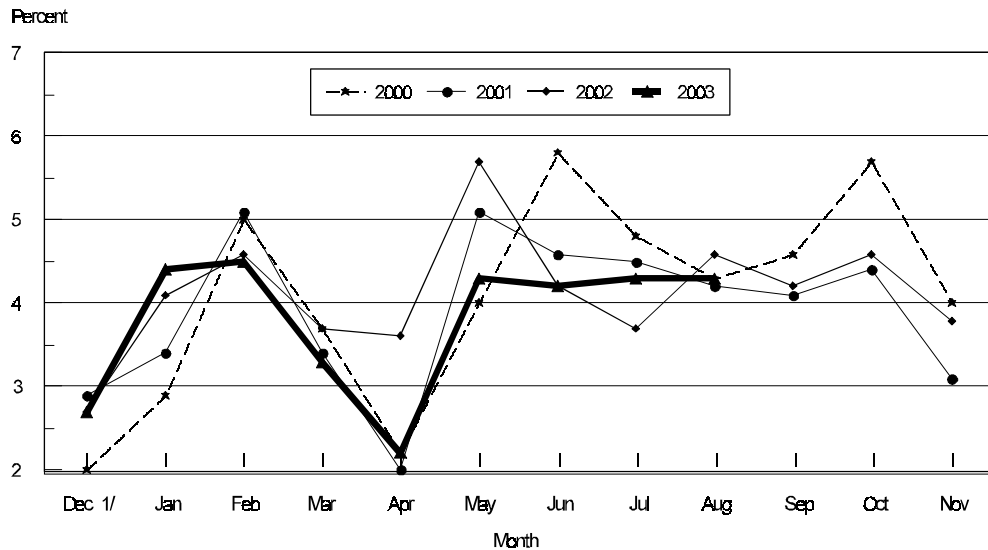
² Estimates for individual States are not available.

**Forced Molt: Percent of All Layers by Month,
United States, 2002-03 ¹**

Month	Percent Being Molted		Percent with Molt Completed	
	2002	2003	2002	2003
	<i>Percent</i>	<i>Percent</i>	<i>Percent</i>	<i>Percent</i>
Jan	4.1	4.4	22.7	23.7
Feb	4.6	4.5	22.0	23.9
Mar	3.7	3.3	22.2	23.6
Apr	3.6	2.2	22.2	24.5
May	5.7	4.3	21.5	23.5
Jun	4.2	4.2	22.2	23.4
Jul	3.7	4.3	22.8	23.8
Aug	4.6	4.3	21.9	23.5
Sep	4.2		23.4	
Oct	4.6		23.7	
Nov	3.8		23.5	
Dec	2.7		23.7	

¹ As of first of month.

**All Layers : United States
Percent Being Molted, 2000 - 2003
First of Month**



1/ Previous Year

**Forced Molt: Percent of All Layers by State
and United States, August 2002-03 ¹**

State	Percent Being Molted		Percent with Molt Completed	
	2002	2003	2002	2003
	<i>Percent</i>	<i>Percent</i>	<i>Percent</i>	<i>Percent</i>
AL	4.0	2.0	11.0	5.0
AR	3.0	0.0	9.0	10.5
CA	6.0	2.0	27.0	37.0
CO	2.5	6.0	22.5	20.5
CT	0.0	3.5	8.5	7.5
FL	8.0	4.5	32.0	29.5
GA	5.0	5.5	14.5	15.5
HI	5.0	5.0	48.5	56.0
IL	7.5	0.5	43.5	26.5
IN	9.0	5.5	24.5	32.5
IA	6.0	10.0	27.5	31.5
ME	0.0	0.0	2.0	0.0
MD	9.0	0.0	27.5	27.5
MI	2.5	4.0	24.0	21.5
MN	0.0	1.5	28.0	28.5
MS	1.0	2.0	10.5	11.0
MO	1.5	2.5	25.0	12.0
NE	6.5	8.5	22.5	23.0
NY	0.0	0.0	4.0	5.0
NC	1.0	0.5	9.0	11.0
OH	6.5	2.5	17.5	26.0
OK	0.0	0.0	6.0	8.5
OR	2.5	4.5	27.0	32.5
PA	3.5	4.0	19.5	20.5
SC	5.0	8.5	31.5	26.0
SD	6.5	2.0	28.5	21.5
TX	4.0	4.5	23.0	21.0
VA	0.0	0.0	13.0	17.5
WA	5.0	7.5	50.5	37.5
WI	4.5	4.5	36.0	29.5
30 Sts	4.7	4.2	21.5	23.0
Oth Sts ²	4.2	4.5	28.4	29.7
US	4.6	4.3	21.9	23.5

¹ As of first of month.

² Estimates for individual States are not available.

**Hatchery Production: Eggs in Incubators, Chicks Hatched,
and Placements by Type, United States, July-August 2002-03**

Item	2002	2003	2003 as % of 2002
	<i>1,000</i>	<i>1,000</i>	<i>Percent</i>
Egg-Type			
Eggs in Incubators on Aug 1	32,832	30,710	94
Chicks Hatched During Jul	35,573	35,593	100
Chicks Hatched Jan thru Jul	254,637	247,887	97
Pullets Hatched During Jul for Intended Placements in Hatchery Supply Flocks	282	226	80
7-18 Month Earlier ¹	3,048	2,927	96
Broiler-Type			
Eggs in Incubators on Aug 1	644,725	640,775	99
Chicks Hatched During Jul	781,707	777,341	99
Chicks Hatched Jan thru Jul	5,394,093	5,334,270	99
Pullets Hatched During Jul for Intended Placements in Hatchery Supply Flocks	6,602	7,071	107
7-15 Months Earlier ²	61,346	62,022	101

¹ 2003 includes pullet chicks hatched Jan 2002 through Dec 2002.

² 2003 includes pullet chicks hatched Apr 2002 through Dec 2002.

**Egg-Type Eggs in Incubators: By Region and United States,
August 1, 2002-03**

Geographic Division	2002	2003	2003 as % of 2002
	<i>1,000</i>	<i>1,000</i>	<i>Percent</i>
North Atlantic	4,745	4,854	102
E North Central	6,868	7,100	103
W North Central	7,821	7,500	96
South Atlantic	3,916	2,556	65
South Central	5,195	5,099	98
West	4,287	3,601	84
US	32,832	30,710	94

Regional Listing:

North Atlantic = CT, ME, MA, NH, NJ, NY, PA, RI, VT.

E North Central = IL, IN, MI, OH, WI.

W North Central = IA, KS, MN, MO, NE, ND, SD.

South Atlantic = DE, FL, GA, MD, NC, SC, VA, WV.

South Central = AL, AR, KY, LA, MS, OK, TN, TX.

West = AK, AZ, CA, CO, HI, ID, MT, NM, NV, OR, UT, WA, WY.

**Egg-Type Chicks Hatched: By State and United States,
July 2002-03**

State	July			Jan-Jul		
	2002	2003	2003 as % of 2002	2002	2003	2003 as % of 2002
	<i>1,000</i>	<i>1,000</i>	<i>Percent</i>	<i>1,000</i>	<i>1,000</i>	<i>Percent</i>
AR	834	824	99	5,426	5,663	104
FL	536	812	151	4,013	4,720	118
GA	2,194	2,407	110	15,324	16,820	110
IN	5,149	4,932	96	35,230	34,383	98
IA	5,235	6,297	120	37,315	41,985	113
MN	1,416	1,100	78	10,139	9,491	94
PA	3,815	4,685	123	30,802	29,995	97
Oth Sts ¹	16,394	14,536	89	116,388	104,830	90
US	35,573	35,593	100	254,637	247,887	97

¹ Not published separately to avoid disclosing data for individual operations.

Egg-Type Chicks Hatched: By Month, United States, 2001-03

Month	By Months				Cumulative			
	2001	2002	2003	2003 as % of 2002	2001	2002	2003	2003 as % of 2002
	<i>1,000</i>	<i>1,000</i>	<i>1,000</i>	<i>Percent</i>	<i>1,000</i>	<i>1,000</i>	<i>1,000</i>	<i>Percent</i>
Jan	36,728	35,647	33,499	94	36,728	35,647	33,499	94
Feb	37,836	34,465	29,988	87	74,564	70,112	63,487	91
Mar	41,015	36,977	36,726	99	115,579	107,089	100,213	94
Apr	42,789	38,088	37,531	99	158,368	145,177	137,744	95
May	42,655	38,751	38,206	99	201,023	183,928	175,950	96
Jun	40,822	35,136	36,344	103	241,845	219,064	212,294	97
Jul	38,651	35,573	35,593	100	280,496	254,637	247,887	97
Aug	34,987	35,681			315,483	290,318		
Sep	37,140	35,734			352,623	326,052		
Oct	35,825	32,149			388,448	358,201		
Nov	32,355	31,146			420,803	389,347		
Dec	31,870	31,973			452,673	421,320		

Intended Placements: Egg-Type Pullet Chicks for Hatchery Supply
Flocks by Month and Total, United States, 2001-03 ¹

Month	Pullet Chicks Hatched			2003 as % of 2002	Cumulative Potential Placements Relative to Current Supply Flocks 7-18 Months Earlier ²		
	2001	2002	2003		2002	2003	2004
	<i>1,000</i>	<i>1,000</i>	<i>1,000</i>	<i>Percent</i>	<i>1,000</i>	<i>1,000</i>	<i>1,000</i>
Jan	236	228	198	87	3,158	2,974	2,974
Feb	214	247	221	89	3,205	2,916	2,918
Mar	284	237	315	133	3,239	2,886	
Apr	311	295	276	94	3,225	2,944	
May	315	319	279	87	3,134	2,980	
Jun	261	221	305	138	3,087	2,946	
Jul	340	282	226	80	3,048	2,927	
Aug	251	221			3,040	2,897	
Sep	219	277			3,073	2,871	
Oct	150	186			3,026	2,949	
Nov	261	227			3,010	2,930	
Dec	206	187			3,014	2,890	
Total	3,048	2,927					

¹ Reported by leading breeders. Coverage may not be 100 percent. Includes expected pullet chicks from eggs sold during the preceding month at the rate of 125 pullet chicks per 30 dozen case of eggs.

² For July 2003, includes breeder pullet chicks hatched Jan 2002 through Dec 2002. The 7-18 months represent the first laying cycle. Molting and additional laying cycles will increase the cumulative potential placements.

Broiler-Type Eggs in Incubators: By Region
and United States, August 1, 2002-03

Geographic Division	2002	2003	2003 as % of 2002
	<i>1,000</i>	<i>1,000</i>	<i>Percent</i>
North Atlantic	11,663	12,322	106
E North Central	7,600	8,395	110
W North Central	20,614	22,026	107
South Atlantic	239,283	233,599	98
South Central	342,058	341,216	100
West	23,507	23,217	99
US	644,725	640,775	99

**Broiler-Type Chicks Hatched: By State
and United States, July 2002-03**

State	July			Jan-Jul		
	2002	2003	2003 as % of 2002	2002	2003	2003 as % of 2002
	<i>1,000</i>	<i>1,000</i>	<i>Percent</i>	<i>1,000</i>	<i>1,000</i>	<i>Percent</i>
AL	106,051	105,661	100	737,880	717,006	97
AR	110,953	111,352	100	764,127	765,907	100
DE	12,567	13,188	105	88,417	90,174	102
FL	8,679	4,874	56	58,977	37,816	64
GA	117,389	118,582	101	792,543	795,231	100
KY	24,087	24,218	101	165,040	167,030	101
LA	13,781	14,446	105	94,531	95,600	101
MD	35,482	34,497	97	242,582	240,425	99
MS	70,081	71,521	102	481,009	487,607	101
NC	67,027	64,958	97	476,698	463,021	97
OK	24,427	23,159	95	161,547	163,016	101
PA	13,361	13,087	98	91,325	87,657	96
SC	16,751	16,007	96	114,752	116,672	102
TX	55,363	53,685	97	388,746	373,535	96
VA	22,832	23,867	105	164,334	166,223	101
CA, MO, TN, & WV	60,737	62,077	102	417,751	417,024	100
19 Sts ¹	759,568	755,179	99	5,240,259	5,183,944	99
Oth Sts ²	22,139	22,162	100	153,834	150,326	98
US	781,707	777,341	99	5,394,093	5,334,270	99

¹ States in the weekly hatchery production estimating program.

² Not published separately to avoid disclosing data for individual operations.

Broiler-Type Chicks Hatched: By Month, United States, 2001-03

Month	By Months				Cumulative			
	2001	2002	2003	2003 as % of 2002	2001	2002	2003	2003 as % of 2002
	<i>1,000</i>	<i>1,000</i>	<i>1,000</i>	<i>Percent</i>	<i>1,000</i>	<i>1,000</i>	<i>1,000</i>	<i>Percent</i>
Jan	745,939	776,961	759,773	98	745,939	776,961	759,773	98
Feb	683,255	703,323	694,590	99	1,429,194	1,480,284	1,454,363	98
Mar	778,760	791,093	774,836	98	2,207,954	2,271,377	2,229,199	98
Apr	755,455	765,415	761,145	99	2,963,409	3,036,792	2,990,344	98
May	785,704	799,262	791,905	99	3,749,113	3,836,054	3,782,249	99
Jun	766,534	776,332	774,680	100	4,515,647	4,612,386	4,556,929	99
Jul	769,448	781,707	777,341	99	5,285,095	5,394,093	5,334,270	99
Aug	771,550	780,020			6,056,645	6,174,113		
Sep	738,379	740,396			6,795,024	6,914,509		
Oct	748,274	720,564			7,543,298	7,635,073		
Nov	703,365	690,052			8,246,663	8,325,125		
Dec	774,453	753,875			9,021,116	9,079,000		

**Intended Placements: Broiler-Type Pullet Chicks for Hatchery
Supply Flocks by Month and Total, 2001-03 ¹**

Month	Pullet Chicks Hatched			2003 as % of 2002	Cumulative Potential Placements Relative to Current Supply Flocks 7-15 Months Earlier ²		
	2001	2002	2003		2002	2003	2004
	<i>1,000</i>	<i>1,000</i>	<i>1,000</i>	<i>Percent</i>	<i>1,000</i>	<i>1,000</i>	<i>1,000</i>
US Place- ments							
Jan	6,685	6,264	6,269	100	60,750	62,473	60,015
Feb	6,748	7,275	6,659	92	60,382	62,371	60,821
Mar	6,752	6,775	6,329	93	60,771	62,559	
Apr	6,398	6,814	6,720	99	60,989	62,658	
May	7,117	7,597	7,612	100	61,008	62,659	
Jun	6,822	7,206	6,748	94	61,521	62,322	
Jul	6,326	6,602	7,071	107	61,346	62,022	
Aug	7,494	7,449			61,212	61,477	
Sep	6,647	6,676			61,370	60,539	
Oct	6,704	6,265			61,323	59,662	
Nov	7,261	6,938			61,811	59,780	
Dec	6,577	6,475			61,914	59,943	
Annual Total	81,531	82,336					
Total Place- ments ³							
Jan	7,615	7,415	7,388	100			
Feb	8,275	8,491	8,094	95			
Mar	8,325	7,997	7,391	92			
Apr	7,915	8,119	8,000	99			
May	8,647	8,982	8,920	99			
Jun	8,220	8,802	8,341	95			
Jul	7,687	8,083	8,555	106			
Aug	9,133	8,913					
Sep	8,047	8,002					
Oct	7,848	7,438					
Nov	9,017	8,202					
Dec	8,119	8,016					
Annual Total	98,848	98,460					

¹ Reported by leading breeders. Coverage may not be 100 percent. Includes expected pullet chicks from eggs sold during the preceding month at the rate of 125 pullet chicks per 30 dozen case of eggs.

² For Jul 2003, includes breeder pullet chicks hatched Apr 2002 through Dec 2002.

³ U.S. production of intended placements worldwide.

Procedures and Reliability

Data Sources: Primary data for the "**Chickens and Eggs**" report are from weekly and/or monthly questionnaires sent to producers. An attempt is made to collect information for layer and egg estimates from each known contractor and independent producer who has over 30,000 table egg layers. Coverage for operations with less than 30,000 table egg layers are estimated each month based on data reported in December. Approximately 900 contractors, independent egg producers, and started pullet operations are contacted each month. All known hatcheries, approximately 330, are contacted for information on a weekly and/or monthly basis.

Revisions: The previous month's estimates are subject to revision if late reports or corrected data indicates a different level. Additionally, revisions needed after the monthly report will be made at the end of the marketing year and published in the annual summaries of "**Chickens and Eggs Summary**" and "**Hatchery Production**".

Procedures and Reliability: Operations are mailed a questionnaire and given adequate time to respond by mail. Those that do not respond are phoned. Great care is exercised to ensure that all operations are accounted for during each survey period. However, there are usually missing reports that must be accounted for in the estimates.

Sound statistical methodology is employed to derive estimates from the reported data. All data are checked for unusual values. All operations' data are compared to their own past operating profiles and also to trends from other operations. Data for missing operations are estimated based on similar operations or historical data. Survey data are subject to non-sampling errors such as omissions and mistakes in reporting and in processing. While these errors cannot be measured directly, they are minimized by reviewing all data for consistency and reasonableness.

Egg-type chicks hatched are comprised of all chicks of egg-type domesticated breeds including males and chicks destined for hatchery supply flocks and research purposes. The relationship of chicks hatched to chicken inventory and poultry marketings is carefully monitored. The disposition of egg-type chicks hatched prior to placement into the laying flock can vary significantly, which can make comparisons to changes in layer inventory inconsistent over time.

Intended placement data reported by leading breeders include pullet chicks expected from eggs sold the preceding month. The breeders in this report account for a large percentage of replacement pullets for hatchery supply flocks. Production of replacement pullets by these breeders indicates the number of pullets available to hatchery supply flocks several months before the pullets will actually move into the flocks. "Hatchery Supply Flocks" include all generations of layers which could lay eggs to supply a hatchery. This includes the generations of parents, grandparents, great-grandparents, pedigree, etc. Also included are research flocks, vaccine flocks, and specific pathogen-free flocks. The broiler cumulative potential placements are a moving total of the intended placements 7-15 months earlier. The egg-type cumulative potential placements of 7-18 months represent the first laying cycle. Molting and additional laying cycles will increase the cumulative potential placements of egg-type hatching flocks.

The next "*Chickens and Eggs*" report will be released at 3 p.m. ET on September 23, 2003.

The United States Department of Agriculture (USDA) prohibits discrimination in all its programs on the basis of race, color, national origin, gender, religion, age, disability, political beliefs, sexual orientation, and marital or family status. (Not all prohibited bases apply to all programs.) Persons with disabilities who require alternative means for communication of program information (braille, large print, audiotape, etc.) should contact the USDA's TARGET Center at 202-720-2600 (voice and TDD).

To file a complaint of discrimination, write USDA, Director, Office of Civil Rights, Room 326-W, Whitten Building, 1400 Independence Avenue, SW, Washington, D.C., 20250-9410, or call 202-720-5964 (voice or TDD). USDA is an equal opportunity provider and employer.

ACCESS TO REPORTS!!

For your convenience, there are several ways to obtain NASS reports, data products, and services:

INTERNET ACCESS

All NASS reports are available free of charge on the worldwide Internet. For access, connect to the Internet and go to the NASS Home Page at: <http://www.usda.gov/nass/>. Select "Today's Reports" or Publications and then Reports Calendar or Publications and then Search, by Title or Subject.

E-MAIL SUBSCRIPTION

All NASS reports are available by subscription free of charge direct to your e-mail address. Starting with the NASS Home Page at <http://www.usda.gov/nass/>, click on **Publications**, then click on the **Subscribe by E-mail** button which takes you to the page describing e-mail delivery of reports. Finally, click on **Go to the Subscription Page** and follow the instructions.

AUTOFAX ACCESS

NASSFax service is available for some reports from your fax machine. Please call 202-720-2000, using the handset attached to your fax. Respond to the voice prompts. Document 0411 is a list of available reports.

PRINTED REPORTS OR DATA PRODUCTS

CALL OUR TOLL-FREE ORDER DESK: 800-999-6779 (U.S. and Canada)
Other areas, please call 703-605-6220 FAX: 703-605-6900
(Visa, MasterCard, check, or money order acceptable for payment.)

ASSISTANCE

For **assistance** with general agricultural statistics or further information about NASS or its products or services, contact the **Agricultural Statistics Hotline** at **800-727-9540**, 7:30 a.m. to 4:00 p.m. ET, or e-mail: nass@nass.usda.gov.
