

Chickens and Eggs



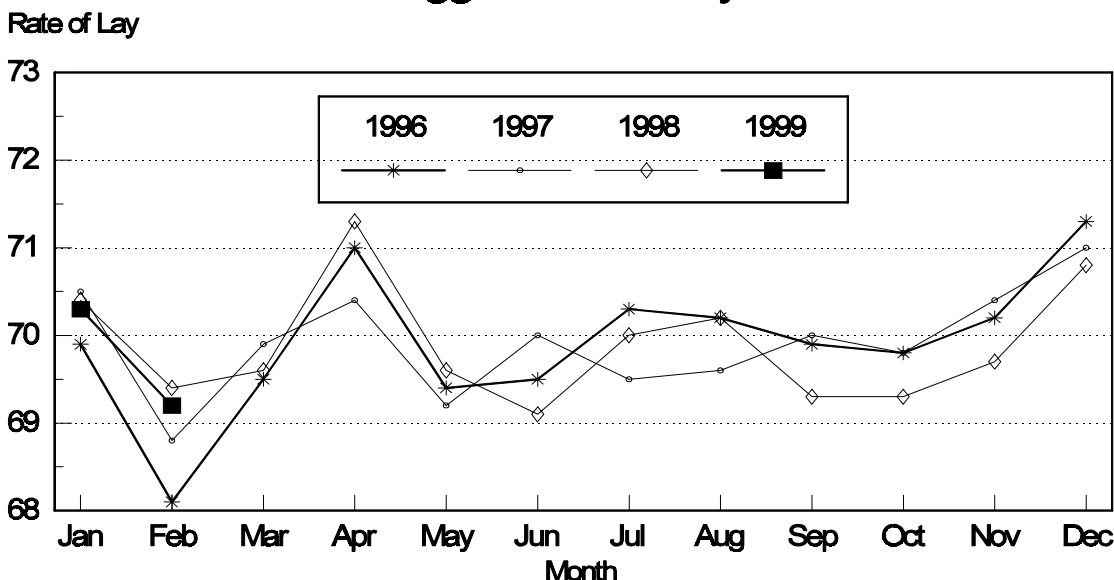
USDA
Washington, D.C.

Released February 23, 1999, by the National Agricultural Statistics Service (NASS), Agricultural Statistics Board, U.S. Department of Agriculture. For information on "Chickens and Eggs" call Dan Boostrom at (202) 720-3244. For information on Hatch call Tom Kruchten at (202) 690-4870, office hours 7:30 a.m. to 4:00 p.m. ET.

January Egg Production Up 3 Percent

U.S. egg production totaled 6.97 billion during January 1999, up 3 percent from the 6.77 billion produced in 1998. Production included 5.89 billion table eggs and 1.08 billion hatching eggs, of which 1.02 billion were broiler-type and 66.0 million were egg-type. The total number of layers during January 1999 averaged 322 million, up 3 percent from the total average number of layers during January 1998. January egg production per 100 layers was 2,164 eggs, down fractionally from 2,169 eggs in January 1998.

All Layers: 1st of Month Rate of Lay United States, 1996 - 1999 Eggs Per 100 Layers



All layers in the U.S. on February 1, 1999, totaled 322 million, up 3 percent from a year ago. The 322 million layers consisted of 263 million layers producing table or commercial type eggs, 56.2 million layers producing broiler-type hatching eggs, and 2.76 million layers producing egg-type hatching eggs. Rate of lay per day on February 1, 1999, averaged 69.2 eggs per 100 layers, down fractionally from the 69.4 a year ago.

Laying flocks in the 30 major egg production States produced 6.59 billion eggs during January, up 3 percent from January 1999. The average number of layers during January, at 305 million, was up 3 percent from a year earlier.

Individual State estimates are available for the 30 major egg producing States. These States are listed on page 8 of this release and account for approximately 95 percent of the total U.S. egg production. Production for the other States are grouped into an "Other States" category and combined with the 30 States published individually to obtain a U.S. estimate. Individual State estimates for "Other States" are available annually in the "**Layers and Egg Production**" report.

Egg-Type Chicks Hatched Down 4 Percent

Egg-type chicks **hatched** during January totaled 35.7 million, down 4 percent from January 1998. **Eggs in incubators** totaled 33.9 million on February 1, 1999, up 3 percent from a year ago.

Domestic placements of **egg-type pullet chicks for future hatchery supply flocks** by leading breeders totaled 166,000 during January 1999, down 12 percent from January 1998.

Broiler Hatch Up 3 Percent

The January 1999 **hatch** of broiler-type chicks, at 735 million, was up 3 percent from January of the previous year. There were 607 million **eggs in incubators** on February 1, 1999, up 3 percent from a year earlier.

Leading breeders placed 7.06 million **broiler-type pullet chicks for future domestic hatchery supply flocks** during January 1999, up 4 percent from January 1998.

**All Layers: Average Number on Hand During the Month,
United States, 1996-99**

Month	1996	1997	1998	1999
	<i>1,000 Layers</i>	<i>1,000 Layers</i>	<i>1,000 Layers</i>	<i>1,000 Layers</i>
Dec ¹	299,345	304,463	311,888	321,193
Jan	299,230	304,289	311,876	322,196
Feb	298,904	304,000	313,245	
Mar	298,853	304,285	314,101	
Apr	297,493	303,618	311,917	
May	295,516	302,241	309,615	
Jun	294,837	300,537	309,166	
Jul	296,290	299,605	308,927	
Aug	297,804	300,211	309,251	
Sep	298,582	303,661	311,278	
Oct	300,052	306,807	314,847	
Nov	302,386	309,670	318,797	

¹ December preceding year.

**Eggs: Production During the Month by Type,
United States, 1998-99**

Month	Total Eggs		Table Eggs		Hatching Eggs	
	1998	1999	1998	1999	1998	1999
	<i>Million Eggs</i>	<i>Million Eggs</i>	<i>Million Eggs</i>	<i>Million Eggs</i>	<i>Million Eggs</i>	<i>Million Eggs</i>
Dec ¹	6,841	7,029	5,802	5,957	1,039	1,072
Jan	6,766	6,973	5,720	5,892	1,046	1,081
Feb	6,109		5,150		959	
Mar	6,869		5,797		1,072	
Apr	6,603		5,556		1,047	
May	6,665		5,584		1,081	
Jun	6,456		5,433		1,023	
Jul	6,720		5,674		1,046	
Aug	6,694		5,655		1,039	
Sep	6,480		5,480		1,000	
Oct	6,791		5,746		1,045	
Nov	6,723		5,695		1,028	
During Year	79,717	14,002	67,292	11,849	12,425	2,153

¹ December preceding year.

**Layers and Eggs : Layers on Hand and Eggs Produced by Type,
and Forced Molt, United States, December-January 1997-99**

Item	Unit	1997	1998 ¹	1998 as % of 1997
Layers During Dec	1,000			
All Layers		311,888	321,193	103
Table Egg Type		255,919	262,935	103
Hatching Egg Type		55,969	58,258	104
Broiler-Type Hatching		53,449	55,593	104
Egg-Type Hatching		2,520	2,665	106
Eggs per 100 Layers During Dec	Number			
All Layers		2,193	2,188	100
Table Egg Type		2,267	2,266	100
Hatching Egg Type		1,856	1,840	99
Broiler-Type Hatching		1,832	1,813	99
Egg-Type Hatching		2,381	2,402	101
Eggs Produced During Dec	Million			
All Layers		6,841	7,029	103
Table Egg Type		5,802	5,957	103
Hatching Egg Type		1,039	1,072	103
Broiler-Type Hatching		979	1,008	103
Egg-Type Hatching		60	64	107
		1998 ¹	1999 ¹	1999 as % of 1998
Layers on Jan 1	1,000			
All Layers		311,593	322,111	103
Table Egg Type		255,137	263,274	103
Hatching Egg Type		56,456	58,837	104
Broiler-Type Hatching		53,966	56,134	104
Egg-Type Hatching		2,490	2,703	109
Eggs per 100 Layers on Jan 1	Number			
All Layers		70.4	70.3	100
Table Egg Type		72.9	72.8	100
Hatching Egg Type		59.4	58.7	99
Broiler-Type Hatching		58.6	57.8	99
Egg-Type Hatching		77.1	77.1	100
Forced Molt Layers on Jan 1	Percent			
Percent Being Molted		4.1	4.1	100
Percent with Molt Completed		21.8	22.5	103

¹ Revised.

**Layers and Eggs: Layers on Hand and Eggs Produced by Type,
and Forced Molt, United States, January-February 1998-99**

Item	Unit	1998 ¹	1999 ²	1999 as % of 1998
Layers During Jan	1,000			
All Layers		311,876	322,196	103
Table Egg Type		254,945	263,263	103
Hatching Egg Type		56,931	58,933	104
Broiler-Type Hatching		54,387	56,198	103
Egg-Type Hatching		2,544	2,735	108
Eggs per 100 Layers During Jan	Number			
All Layers		2,169	2,164	100
Table Egg Type		2,244	2,238	100
Hatching Egg Type		1,837	1,834	100
Broiler-Type Hatching		1,813	1,806	100
Egg-Type Hatching		2,358	2,413	102
Eggs Produced During Jan	Million			
All Layers		6,766	6,973	103
Table Egg Type		5,720	5,892	103
Hatching Egg Type		1,046	1,081	103
Broiler-Type Hatching		986	1,015	103
Egg-Type Hatching		60	66	110
Layers on Feb 1	1,000			
All Layers		312,111	322,221	103
Table Egg Type		254,724	263,222	103
Hatching Egg Type		57,387	58,999	103
Broiler-Type Hatching		54,794	56,243	103
Egg-Type Hatching		2,593	2,756	106
Eggs per 100 Layers on Feb 1	Number			
All Layers		69.4	69.2	100
Table Egg Type		71.7	71.4	100
Hatching Egg Type		59.1	59.3	100
Broiler-Type Hatching		58.2	58.4	100
Egg-Type Hatching		76.8	76.3	99
Forced Molt Layers, Feb 1	Percent			
Percent Being Molted		5.2	4.9	94
Percent with Molt Completed		21.0	22.0	105

¹ Revised.

² Preliminary.

**Layers and Eggs: Layers on Hand and Eggs Produced by Type,
and Forced Molt, 30 Selected States, December-January 1997-99 ¹**

Item	Unit	1997	1998 ²	1998 as % of 1997
Layers During Dec	1,000			
All Layers		295,072	303,620	103
Table Egg Type		243,165	249,761	103
Hatching Egg Type		51,907	53,859	104
Broiler-Type Hatching		49,483	51,304	104
Egg-Type Hatching		2,424	2,555	105
Eggs per 100 Layers During Dec	Number			
All Layers		2,193	2,186	100
Table Egg Type		2,265	2,259	100
Hatching Egg Type		1,857	1,844	99
Broiler-Type Hatching		1,831	1,815	99
Egg-Type Hatching		2,393	2,427	101
Eggs Produced During Dec	Million			
All Layers		6,471	6,636	103
Table Egg Type		5,507	5,643	102
Hatching Egg Type		964	993	103
Broiler-Type Hatching		906	931	103
Egg-Type Hatching		58	62	107
		1998 ²	1999 ²	1999 as % of 1998
Layers on Jan 1	1,000			
All Layers		294,576	304,552	103
Table Egg Type		242,291	250,118	103
Hatching Egg Type		52,285	54,434	104
Broiler-Type Hatching		49,892	51,852	104
Egg-Type Hatching		2,393	2,582	108
Eggs per 100 Layers on Jan 1	Number			
All Layers		70.5	70.2	100
Table Egg Type		72.9	72.7	100
Hatching Egg Type		59.5	58.7	99
Broiler-Type Hatching		58.7	57.8	98
Egg-Type Hatching		77.1	77.7	101
Forced Molt Layers on Jan 1	Percent			
Percent Being Molted		4.2	4.1	98
Percent with Molt Completed		21.8	22.3	102
Layers Sold for Slaughter During Dec	1,000	14,194	16,164	114
Layers Rendered, Died, Destroyed, Composted or Disappeared For Any Reason During Dec	1,000	3,053	3,171	104
Pullets Less Than 20 Weeks of Age, Jan 1	1,000	81,546	89,016	109
Pullets Added During Dec ³	1,000	15,812	18,653	118

¹ The 30 States are listed in the table on page 8.

² Revised.

³ Pullet chicks one day old added to pullet flocks.

**Layers and Eggs: Layers on Hand and Eggs Produced by Type, and Forced
Molt, 30 Selected States, January-February, 1998-99 ¹**

Item	Unit	1998 ²	1999 ³	1999 as % of 1998
Layers During Jan	1,000			
All Layers		294,785	304,623	103
Table Egg Type		242,073	250,069	103
Hatching Egg Type		52,712	54,554	103
Broiler-Type Hatching		50,265	51,941	103
Egg-Type Hatching		2,447	2,613	107
Eggs per 100 Layers During Jan	1,000			
All Layers		2,172	2,164	100
Table Egg Type		2,245	2,235	100
Hatching Egg Type		1,838	1,835	100
Broiler-Type Hatching		1,812	1,806	100
Egg-Type Hatching		2,370	2,411	102
Eggs Produced During Jan	Million			
All Layers		6,404	6,591	103
Table Egg Type		5,435	5,590	103
Hatching Egg Type		969	1,001	103
Broiler-Type Hatching		911	938	103
Egg-Type Hatching		58	63	109
Layers on Feb 1	1,000			
All Layers		294,956	304,649	103
Table Egg Type		241,833	250,001	103
Hatching Egg Type		53,123	54,648	103
Broiler-Type Hatching		50,627	52,014	103
Egg-Type Hatching		2,496	2,634	106
Eggs per 100 Layers on Feb 1	Number			
All Layers		69.6	69.3	100
Table Egg Type		71.9	71.5	99
Hatching Egg Type		59.2	59.4	100
Broiler-Type Hatching		58.3	58.6	101
Egg-Type Hatching		76.6	76.3	100
Forced Molt Layers, Feb 1	Percent			
Percent Being Molted		5.2	4.8	92
Percent with Molt Completed		21.1	22.0	104
Layers Sold for Slaughter During Jan	1,000	14,971	14,941	100
Layers Rendered, Died, Destroyed, Composted or Disappeared For Any Reason During Jan	1,000	3,265	3,464	106
Pullets Less Than 20 Weeks of Age, Feb 1	1,000	81,006	88,292	109
Pullets Added During Jan ⁴	1,000	19,165	18,927	99

¹ The 30 States are listed in the table on page 8.

² Revised.

³ Preliminary.

⁴ Pullet chicks one day old added to pullet flocks.

**Layers and Eggs: Layers on Hand and Eggs Produced by State
and United States, During December 1997-98 ¹**

State	Table Egg Layers in Flocks 30,000 and Above		All Layers ²		Eggs per 100 for All Layers ²	
	1997	1998	1997	1998	1997	1998
	<i>1,000</i>	<i>1,000</i>	<i>1,000</i>	<i>1,000</i>	<i>Number</i>	<i>Number</i>
AL	3,921	4,325	10,524	11,108	2,033	1,972
AR	4,500	4,565	14,600	14,851	1,870	1,919
CA	25,305	25,657	25,961	26,357	2,265	2,261
CO	3,008	2,989	3,612	3,556	2,298	2,193
CT	3,282	2,911	3,457	3,092	2,285	2,296
FL	10,044	9,893	10,705	10,630	2,167	2,258
GA	11,402	11,892	20,439	21,417	2,172	2,134
HI	690	578	715	604	1,818	2,152
IL	3,101	2,713	3,382	2,959	2,336	2,129
IN	21,340	21,265	21,987	21,965	2,260	2,213
IA	20,912	24,261	21,775	25,177	2,223	2,157
ME	4,712	5,082	4,831	5,195	2,484	2,464
MD	2,712	3,172	3,188	3,634	2,227	2,312
MI	4,935	5,486	5,196	5,763	2,215	2,238
MN	11,288	11,403	11,991	12,119	2,168	2,178
MS	1,909	1,636	6,870	6,626	1,863	1,932
MO	5,708	5,179	7,075	6,641	2,205	2,259
NE	10,002	10,522	10,152	10,672	2,177	2,202
NY	3,216	3,322	3,419	3,577	2,398	2,432
NC	4,216	3,847	11,565	11,552	1,902	1,974
OH	26,635	28,839	27,222	29,544	2,296	2,302
OK	2,155	1,988	4,095	4,025	2,002	1,963
OR	2,807	2,874	2,993	3,031	2,239	2,270
PA	21,459	21,389	22,763	22,752	2,320	2,334
SC	3,686	3,660	4,705	4,667	2,210	1,971
SD	2,038	1,960	2,233	2,203	2,239	2,270
TX	13,381	13,719	17,132	17,608	2,171	2,175
VA	1,561	1,545	3,534	3,644	2,037	1,894
WA	4,841	4,893	4,971	5,013	2,426	2,322
WI	3,360	3,171	3,980	3,638	2,286	2,281
30 Sts	238,126	244,736	295,072	303,620	2,193	2,186
Oth Sts ³	11,635	12,131	16,816	17,573	2,200	2,236
US	249,761	256,867	311,888	321,193	2,193	2,188

¹ Revised.

² Includes all layers and eggs produced in both table egg and hatching egg flocks regardless of size.

³ Estimates for individual States are not available.

**Layers and Eggs: Layers on Hand and Eggs Produced by State
and United States, During January 1998-99 ¹**

State	Table Egg Layers in Flocks 30,000 and Above		All Layers ²		Eggs per 100 for All Layers ²	
	1998	1999	1998	1999	1998	1999
	<i>1,000</i>	<i>1,000</i>	<i>1,000</i>	<i>1,000</i>	<i>Number</i>	<i>Number</i>
AL	4,026	4,194	10,680	11,127	2,004	1,950
AR	4,520	4,556	15,003	15,048	1,833	1,901
CA	24,808	25,834	25,465	26,606	2,219	2,180
CO	3,023	2,937	3,597	3,478	2,252	2,128
CT	3,275	2,937	3,450	3,120	2,203	2,276
FL	9,765	9,877	10,410	10,622	2,219	2,297
GA	11,351	12,028	20,548	21,540	2,112	2,080
HI	647	587	673	614	2,080	2,117
IL	2,976	2,644	3,263	2,891	2,237	2,179
IN	21,140	21,154	21,822	21,859	2,250	2,246
IA	21,202	24,183	22,058	25,104	2,226	2,175
ME	4,732	4,947	4,833	5,064	2,462	2,468
MD	2,848	3,160	3,334	3,611	2,130	2,354
MI	4,794	5,490	5,058	5,770	2,197	2,203
MN	11,305	11,448	12,010	12,168	2,190	2,153
MS	1,821	1,738	6,882	6,809	1,918	1,997
MO	5,585	5,152	6,947	6,576	2,174	2,205
NE	10,183	10,612	10,333	10,762	2,226	2,146
NY	3,169	3,370	3,369	3,616	2,404	2,406
NC	4,095	3,667	11,456	11,471	1,894	1,944
OH	26,866	29,700	27,483	30,410	2,281	2,243
OK	2,168	2,014	4,056	3,974	1,948	1,963
OR	2,840	2,883	3,028	3,039	2,213	2,264
PA	21,096	21,294	22,415	22,701	2,306	2,335
SC	3,702	3,739	4,731	4,773	2,156	1,948
SD	2,093	1,928	2,288	2,169	2,316	2,305
TX	13,309	13,601	17,116	17,587	2,133	2,098
VA	1,571	1,488	3,583	3,592	1,954	1,893
WA	4,849	4,820	4,977	4,940	2,383	2,356
WI	3,308	3,090	3,917	3,582	2,170	2,289
30 Sts	237,067	245,072	294,785	304,623	2,172	2,164
Oth Sts ³	11,727	12,134	17,091	17,573	2,118	2,174
US	248,794	257,206	311,876	322,196	2,169	2,164

¹ 1999 preliminary, 1998 Revised.

² Includes all layers and eggs produced in both table egg and hatching egg flocks regardless of size.

³ Estimates for individual States are not available.

**Egg Production: By Type, State, and United States,
December 1997-98 ¹**

State	Total Production		Table Eggs ²		Hatching Eggs ²	
	1997	1998	1997	1998	1997	1998
	<i>Million Eggs</i>	<i>Million Eggs</i>	<i>Million Eggs</i>	<i>Million Eggs</i>	<i>Million Eggs</i>	<i>Million Eggs</i>
AL	214	219	94	100	120	119
AR	273	285	93	103	180	182
CA	588	596				
CO	83	78				
CT	79	71				
FL	232	240	219	226	13	14
GA	444	457	270	274	174	183
HI	13	13	13	13	0	0
IL	79	63	75	59	4	4
IN	497	486	486	474	11	12
IA	484	543				
ME	120	128				
MD	71	84	63	76	8	8
MI	115	129				
MN	260	264	250	254	10	10
MS	128	128	39	37	89	91
MO	156	150				
NE	221	235	221	235	0	0
NY	82	87				
NC	220	228	92	94	128	134
OH	625	680				
OK	82	79	50	46	32	33
OR	67	69	65	68	2	1
PA	528	531	514	515	14	16
SC	104	92	86	76	18	16
SD	50	50	50	50	0	0
TX	372	383				
VA	72	69	38	33	34	36
WA	121	116				
WI	91	83				
30 Sts	6,471	6,636	5,507	5,643	964	993
Oth Sts ³	370	393	295	314	75	79
US	6,841	7,029	5,802	5,957	1,039	1,072

¹ Revised.

² Data by type of flock not shown for some States to avoid disclosing individual operations.

³ Estimates for individual States are not available.

**Egg Production: By Type, State, and United States,
January 1998-99¹**

State	Total Production		Table Eggs ²		Hatching Eggs ²	
	1998	1999	1998	1999	1998	1999
	<i>Million Eggs</i>	<i>Million Eggs</i>	<i>Million Eggs</i>	<i>Million Eggs</i>	<i>Million Eggs</i>	<i>Million Eggs</i>
AL	214	217	94	95	120	122
AR	275	286	93	100	182	186
CA	565	580				
CO	81	74				
CT	76	71				
FL	231	244	219	230	12	14
GA	434	448	258	266	176	182
HI	14	13	14	13	0	0
IL	73	63	69	59	4	4
IN	491	491	480	479	11	12
IA	491	546				
ME	119	125				
MD	71	85	63	78	8	7
MI	111	127				
MN	263	262	253	252	10	10
MS	132	136	40	42	92	94
MO	151	145				
NE	230	231	230	231	0	0
NY	81	87				
NC	217	223	88	88	129	135
OH	627	682				
OK	79	78	49	46	30	32
OR	67	69	65	68	2	1
PA	517	530	502	513	15	17
SC	102	93	85	79	17	14
SD	53	50	53	50	0	0
TX	365	369				
VA	70	68	36	32	34	36
WA	119	116				
WI	85	82				
30 Sts	6,404	6,591	5,435	5,590	969	1,001
Oth Sts ³	362	382	285	302	77	80
US	6,766	6,973	5,720	5,892	1,046	1,081

¹ 1999 preliminary, 1998 Revised.

² Data by type of flock not shown for some States to avoid disclosing individual operations.

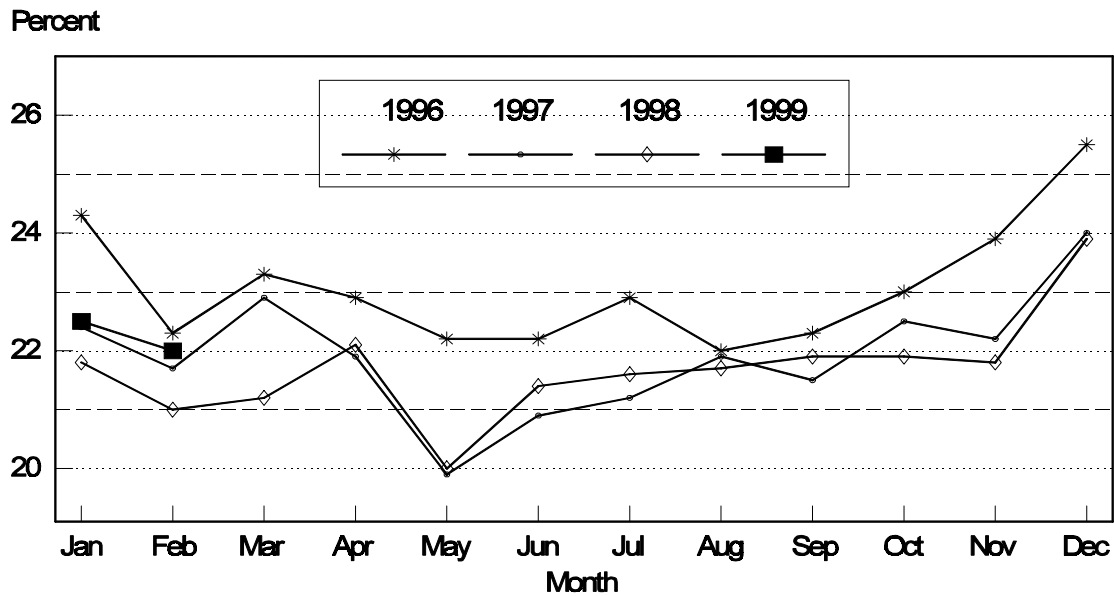
³ Estimates for individual States are not available.

**Forced Molt: Percent of All Layers by Month,
United States, 1998-99 ¹**

Month	Percent Being Molted		Percent with Molt Completed	
	1998	1999	1998	1999
	<i>Percent</i>	<i>Percent</i>	<i>Percent</i>	<i>Percent</i>
Jan	4.1	4.1	21.8	22.5
Feb	5.2	4.9	21.0	22.0
Mar	4.4		21.2	
Apr	2.2		22.1	
May	5.5		20.0	
Jun	4.8		21.4	
Jul	3.9		21.6	
Aug	3.9		21.7	
Sep	4.1		21.9	
Oct	4.9		21.9	
Nov	3.7		21.8	
Dec	2.7		23.9	

¹ As of first of month.

All Layers: United States Percent Molt Completed, 1996 - 1999 First of Month



**Forced Molt: Percent of All Layers by State
and United States, February 1998-99 ¹**

State	Percent Being Molted		Percent with Molt Completed	
	1998	1999	1998	1999
	<i>Percent</i>	<i>Percent</i>	<i>Percent</i>	<i>Percent</i>
AL	3.0	0.5	9.5	12.5
AR	2.0	3.0	11.0	7.5
CA	8.5	8.0	36.5	36.5
CO	5.0	6.5	15.0	34.0
CT	5.0	0.0	11.0	12.0
FL	10.0	6.5	37.0	35.0
GA	6.0	6.5	17.0	19.0
HI	6.5	6.5	43.0	38.0
IL	14.0	11.5	25.0	14.5
IN	2.5	3.5	23.5	31.0
IA	3.5	4.5	28.5	29.0
ME	0.0	0.0	2.0	1.5
MD	13.0	4.5	40.0	37.0
MI	6.0	6.0	17.0	24.5
MN	6.5	2.5	35.0	34.5
MS	3.0	12.0	8.0	9.0
MO	2.0	7.0	23.5	11.5
NE	9.0	4.5	27.5	15.0
NY	0.0	0.0	2.5	5.5
NC	2.0	1.5	8.5	7.0
OH	3.5	5.0	11.5	14.5
OK	4.0	1.5	11.0	7.5
OR	7.0	3.0	38.0	43.5
PA	7.0	5.5	16.5	19.0
SC	7.0	3.0	29.5	23.0
SD	3.0	2.5	26.5	27.0
TX	7.0	6.0	22.0	24.5
VA	2.0	0.5	8.0	5.5
WA	7.0	5.0	27.0	47.5
WI	4.0	4.5	26.0	26.5
30 Sts	5.2	4.8	21.1	22.0
Oth Sts ²	5.8	6.3	20.2	21.8
US	5.2	4.9	21.0	22.0

¹ As of first of month.

² Estimates for individual States are not available.

**Hatchery Production: Eggs in Incubators, Chicks Hatched,
and Placements by Type, United States, January-February 1998-99**

Item	1998	1999	1999 as % of 1998
	<i>1,000</i>	<i>1,000</i>	<i>Percent</i>
Egg-Type			
Eggs in Incubators on Feb 1	32,892	33,876	103
Chicks Hatched During Jan	37,234	35,653	96
Chicks Hatched Jan thru Jan			
Pullets Hatched During Jan for Intended Placements in Hatchery Supply Flocks	189	166	88
7-18 Month Earlier ¹	2,823	3,039	108
Broiler-Type			
Eggs in Incubators on Feb 1	590,837	607,412	103
Chicks Hatched During Jan	710,576	735,348	103
Chicks Hatched Jan thru Jan			
Pullets Hatched During Jan for Intended Placements in Hatchery Supply Flocks	6,794	7,059	104
7-15 Months Earlier ²	56,552	59,331	105

¹ 1999 includes pullet chicks hatched Jul 1997 through Jun 1998.

² 1999 includes pullet chicks hatched Oct 1997 through Jun 1998.

**Egg-Type Eggs in Incubators: By Region and United States,
February 1, 1998-99**

Geographic Division	1998	1999	1999 as % of 1998
	<i>1,000</i>	<i>1,000</i>	<i>Percent</i>
North Atlantic	5,692	6,904	121
E North Central	8,665	7,473	86
W North Central	6,149	7,208	117
South Atlantic	4,106	4,515	110
South Central	3,801	3,985	105
West	4,479	3,791	85
US	32,892	33,876	103

Regional Listing:

North Atlantic = CT, ME, MA, NH, NJ, NY, PA, RI, VT.

E North Central = IL, IN, MI, OH, WI.

W North Central = IA, KS, MN, MO, NE, ND, SD.

South Atlantic = DE, FL, GA, MD, NC, SC, VA, WV.

South Central = AL, AR, KY, LA, MS, OK, TN, TX.

West = AK, AZ, CA, CO, HI, ID, MT, NM, NV, OR, UT, WA, WY.

**Egg-Type Chicks Hatched: By State and United States,
January 1998-99**

State	January			Jan-Jan		
	1998	1999	1999 as % of 1998	1998	1999	1999 as % of 1998
	<i>1,000</i>	<i>1,000</i>	<i>Percent</i>	<i>1,000</i>	<i>1,000</i>	<i>Percent</i>
AR	825	607	74	825	607	74
FL	1,177	1,291	110	1,177	1,291	110
GA	2,142	2,194	102	2,142	2,194	102
IN	7,467	7,059	95	7,467	7,059	95
IA	3,644	3,974	109	3,644	3,974	109
KS	130	295	227	130	295	227
MN	1,935	1,776	92	1,935	1,776	92
MO	369	310	84	369	310	84
PA	5,317	5,002	94	5,317	5,002	94
Oth Sts ¹	14,228	13,145	92	14,228	13,145	92
US	37,234	35,653	96	37,234	35,653	96

¹ Not published separately to avoid disclosing data for individual operations.

Egg-Type Chicks Hatched: By Month, United States, 1997-99

Month	By Months				Cumulative			
	1997	1998	1999	1999 as % of 1998	1997	1998	1999	1999 as % of 1998
	<i>1,000</i>	<i>1,000</i>	<i>1,000</i>	<i>Percent</i>	<i>1,000</i>	<i>1,000</i>	<i>1,000</i>	<i>Percent</i>
Jan	33,815	37,234	35,653	96	33,815	37,234	35,653	96
Feb	35,762	34,573			69,577	71,807		
Mar	37,410	39,986			106,987	111,793		
Apr	38,873	39,926			145,860	151,719		
May	39,078	39,602			184,938	191,321		
Jun	36,861	39,206			221,799	230,527		
Jul	33,838	36,567			255,637	267,094		
Aug	33,125	33,514			288,762	300,608		
Sep	37,181	38,611			325,943	339,219		
Oct	35,328	35,039			361,271	374,258		
Nov	27,846	30,810			389,117	405,068		
Dec	35,890	35,430			425,007	440,498		

**Intended Placements: Egg-Type Pullet Chicks for Hatchery Supply
Flocks by Month and Total, United States, 1997-99¹**

Month	Pullet Chicks Hatched			1999 as % of 1998	Cumulative Potential Placements Relative to Current Supply Flocks 7-18 Months Earlier ²		
	1997	1998	1999		1997	1998	1999
	<i>1,000</i>	<i>1,000</i>	<i>1,000</i>	<i>Percent</i>	<i>1,000</i>	<i>1,000</i>	<i>1,000</i>
Jan	208	189	166	88	2,953	2,823	3,039
Feb	222	239			2,984	2,764	3,099
Mar	209	225			3,007	2,863	3,004
Apr	316	338			2,946	3,034	2,926
May	273	192			2,870	3,067	3,020
Jun	254	360			2,956	2,986	3,123
Jul	207	267			2,940	2,978	3,091
Aug	285	190			2,929	2,959	3,068
Sep	402	324			2,913	2,976	
Oct	266	360			2,805	2,992	
Nov	129	232			2,869	3,014	
Dec	207	175			2,851	2,933	
Total	2,978	3,091					

¹ Reported by leading breeders. Coverage may not be 100 percent. Includes expected pullet chicks from eggs sold during the preceding month at the rate of 125 pullet chicks per 30 dozen case of eggs.

² For January 1999, includes breeder pullet chicks hatched Jul 1997 through Jun 1998. The 7-18 months represent the first laying cycle. Molting and additional laying cycles will increase the cumulative potential placements.

**Broiler-Type Eggs in Incubators: By Region
and United States, February 1, 1998-99**

Geographic Division	1998	1999	1999 as % of 1998
	<i>1,000</i>	<i>1,000</i>	<i>Percent</i>
North Atlantic	12,187	11,800	97
E North Central	7,426	7,166	96
W North Central	21,795	22,381	103
South Atlantic	223,638	231,526	104
South Central	304,098	311,647	102
West	21,693	22,892	106
US	590,837	607,412	103

**Broiler-Type Chicks Hatched: By State
and United States, January 1998-99**

State	January			Jan-Jan		
	1998	1999	1999 as % of 1998	1998	1999	1999 as % of 1998
	<i>1,000</i>	<i>1,000</i>	<i>Percent</i>	<i>1,000</i>	<i>1,000</i>	<i>Percent</i>
AL	91,027	97,270	107	91,027	97,270	107
AR	106,893	108,197	101	106,893	108,197	101
DE	15,672	15,575	99	15,672	15,575	99
FL	9,544	9,896	104	9,544	9,896	104
GA	108,521	112,588	104	108,521	112,588	104
MD	31,137	31,056	100	31,137	31,056	100
MS	62,878	65,663	104	62,878	65,663	104
NC	60,048	62,462	104	60,048	62,462	104
PA	12,796	13,125	103	12,796	13,125	103
SC	14,774	16,423	111	14,774	16,423	111
TX	45,737	48,386	106	45,737	48,386	106
VA	23,454	23,788	101	23,454	23,788	101
CA TN & WV	37,676	39,365	104	37,676	39,365	104
15 Sts ¹	620,157	643,794	104	620,157	643,794	104
Oth Sts ²	90,419	91,554	101	90,419	91,554	101
US	710,576	735,348	103	710,576	735,348	103

¹ States in the weekly hatchery production estimating program.

² Not published separately to avoid disclosing data for individual operations.

Broiler Chicks Hatched: By Month, United States, 1997-99

Month	By Months				Cumulative			
	1997	1998	1999	1999 as % of 1998	1997	1998	1999	1999 as % of 1998
	<i>1,000</i>	<i>1,000</i>	<i>1,000</i>	<i>Percent</i>	<i>1,000</i>	<i>1,000</i>	<i>1,000</i>	<i>Percent</i>
Jan	700,021	710,576	735,348	103	700,021	710,576	735,348	103
Feb	634,253	644,504			1,334,274	1,355,080		
Mar	718,899	731,998			2,053,173	2,087,078		
Apr	693,746	709,360			2,746,919	2,796,438		
May	724,735	739,952			3,471,654	3,536,390		
Jun	704,129	718,983			4,175,783	4,255,373		
Jul	710,699	723,352			4,886,482	4,978,725		
Aug	708,637	713,211			5,595,119	5,691,936		
Sep	684,204	692,859			6,279,323	6,384,795		
Oct	683,113	692,913			6,962,436	7,077,708		
Nov	648,088	673,907			7,610,524	7,751,615		
Dec	711,972	733,797			8,322,496	8,485,412		

**Intended Placements: Broiler-Type Pullet Chicks for Hatchery
Supply Flocks by Month and Total, 1997-99 ¹**

Month	Pullet Chicks Hatched			1999 as % of 1998	Cumulative Potential Placements Relative to Current Supply Flocks 7-15 Months Earlier ²		
	1997	1998	1999		1997	1998	1999
	<i>1,000</i>	<i>1,000</i>	<i>1,000</i>	<i>Percent</i>	<i>1,000</i>	<i>1,000</i>	<i>1,000</i>
US Place- ments							
Jan	6,397	6,794	7,059	104	56,101	56,552	59,331
Feb	5,916	6,263			56,122	57,494	59,808
Mar	6,443	6,776			55,981	57,677	60,537
Apr	6,036	6,687			55,933	58,228	61,598
May	7,062	7,062			56,667	58,085	62,228
Jun	6,008	6,896			57,264	58,516	63,271
Jul	7,167	6,731			57,115	58,325	63,759
Aug	6,697	7,076			56,761	59,083	64,131
Sep	6,502	7,313			55,897	58,284	
Oct	6,254	7,424			56,165	59,052	
Nov	6,347	7,306			56,167	58,572	
Dec	6,252	7,264			56,714	58,937	
Annual Total	77,081	83,592					
Total Place- ments ³							
Jan	7,545	8,812	8,679	98			
Feb	7,122	8,207					
Mar	7,894	8,760					
Apr	7,238	8,299					
May	8,505	8,957					
Jun	7,381	8,845					
Jul	8,460	8,318					
Aug	8,132	8,466					
Sep	8,092	9,035					
Oct	8,145	9,297					
Nov	7,973	9,406					
Dec	8,237	9,190					
Annual Total	94,724	105,592					

¹ Reported by leading breeders. Coverage may not be 100 percent. Includes expected pullet chicks from eggs sold during the preceding month at the rate of 125 pullet chicks per 30 dozen case of eggs.

² For Jan 1999, includes breeder pullet chicks hatched Oct 1997 through Jun 1998.

³ U.S. production of intended placements worldwide.

Procedures and Reliability

Data Sources: Primary data for the "**Chickens and Eggs**" report are from weekly and/or monthly questionnaires sent to producers. An attempt is made to collect information for layer and egg estimates from each known contractor and independent producer who has over 30,000 table egg layers. Coverage for operations with less than 30,000 table egg layers are estimated each month based on data reported in December. Approximately 900 contractors, independent egg producers, and started pullet operations are contacted each month. All known hatcheries, approximately 360, are contacted for information on a weekly and/or monthly basis.

Revisions: The previous month's estimates are subject to revision if late reports or corrected data indicates a different level. Additionally, revisions needed after the monthly report will be made at the end of the marketing year and published in the annual summaries of "**Layers and Egg Production**" and "**Hatchery Production**".

Procedures and Reliability: Operations are mailed a questionnaire and given adequate time to respond by mail. Those that do not respond are phoned. Great care is exercised to ensure that all operations are accounted for during each survey period. However, there are usually missing reports that must be accounted for in the estimates.

Sound statistical methodology is employed to derive estimates from the reported data. All data are checked for unusual values. All operations' data are compared to their own past operating profiles and also to trends from other operations. Data for missing operations are estimated based on similar operations or historical data. Survey data are subject to non-sampling errors such as omissions and mistakes in reporting and in processing. While these errors cannot be measured directly, they are minimized by reviewing all data for consistency and reasonableness.

Egg-type chicks hatched are comprised of all chicks of egg-type domesticated breeds including males and chicks destined for hatchery supply flocks and research purposes. The relationship of chicks hatched to chicken inventory and poultry marketings is carefully monitored. The disposition of egg-type chicks hatched prior to placement into the laying flock can vary significantly, which can make comparisons to changes in layer inventory inconsistent over time.

Intended placement data reported by leading breeders include pullet chicks expected from eggs sold the preceding month. The breeders in this report account for a large percentage of replacement pullets for hatchery supply flocks. Production of replacement pullets by these breeders indicates the number of pullets available to hatchery egg supply flocks several months before the pullets will actually move into the flocks. Beginning with the January 1996 publication the broiler-type cumulative potential placements went from 7-14 months earlier to 7-15 months earlier. The egg-type cumulative potential placements of 7-18 months represent the first laying cycle. Molting and additional laying cycles will increase the cumulative potential placements of egg-type hatching flocks.

The next "Chickens and Eggs" report will be released at 3 p.m. ET on March 22, 1999.

The United States Department of Agriculture (USDA) prohibits discrimination in all its programs on the basis of race, color, national origin, gender, religion, age, disability, political beliefs, sexual orientation, and marital or family status. (Not all prohibited bases apply to all programs.) Persons with disabilities who require alternative means for communication of program information (braille, large print, audiotape, etc.) should contact the USDA's TARGET Center at 202-720-2600 (voice and TDD).

To file a complaint of discrimination, write USDA, Director, Office of Civil Rights, Room 326-W, Whitten Building, 14th and Independence Avenue, SW, Washington, D.C., 20250-9410, or call 202-720-5964 (voice or TDD). USDA is an equal opportunity provider and employer.

ACCESS TO REPORTS!!

For your convenience, there are several ways to obtain NASS reports, data products, and services:

INTERNET ACCESS

All NASS reports are available free of charge on the worldwide Internet. For access, connect to the Internet and go to the NASS Home Page at: **<http://www.usda.gov/nass/>**. Select "Today's Reports" or Publications and then Reports by Calendar or Publications and then Search, by Title or Subject.

E-MAIL SUBSCRIPTION

All NASS reports are available by subscription free of charge direct to your e-mail address. Send an e-mail message to: **usda-reports@usda.mannlib.cornell.edu**. In the body of the message type the word: **list**.

AUTOFAX ACCESS

NASSFax service is available for some reports from your fax machine. Please call 202-720-2000, using the handset attached to your fax. Respond to the voice prompts. Document 0411 is a list of available reports.

----- PRINTED REPORTS OR DATA PRODUCTS

CALL OUR TOLL-FREE ORDER DESK: 800-999-6779 (U.S. and Canada)
Other areas, please call 703-834-0125 FAX: 703-834-0110
(Visa, MasterCard, check, or money order acceptable for payment.)

ASSISTANCE

For **assistance** with general agricultural statistics or further information about NASS or its products or services, contact the **Agricultural Statistics Hotline** at **800-727-9540**, 7:30 a.m. to 4:00 p.m. ET, or e-mail: **nass@nass.usda.gov**.
