

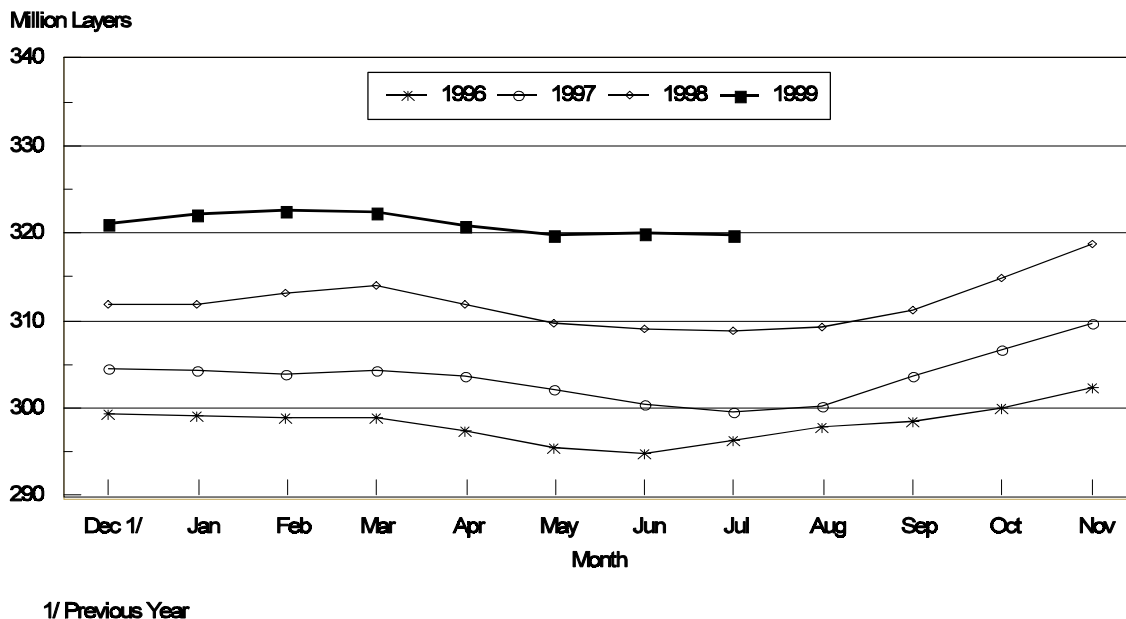
Chickens and Eggs

Released August 24, 1999, by the National Agricultural Statistics Service (NASS), Agricultural Statistics Board, U.S. Department of Agriculture. For information on "Chickens and Eggs" call Dan Boostrom at (202) 720-3244. For information on Hatch call Tom Kruchten at (202) 690-4870, office hours 7:30 a.m. to 4:00 p.m. ET.

July Egg Production Up 3 Percent

U.S. egg production totaled 6.91 billion during July 1999, up 3 percent from the 6.72 billion produced in 1998. Production included 5.80 billion table eggs and 1.11 billion hatching eggs, of which 1.04 billion were broiler-type and 67.0 million were egg-type. The total number of layers during July 1999 averaged 320 million, up 4 percent from the total average number of layers during July 1998. July egg production per 100 layers was 2,159 eggs, down 1 percent from 2,175 eggs in July 1998.

Average Number of All Layers United States, 1996 - 1999



All layers in the U.S. on August 1, 1999, totaled 319 million, up 3 percent from a year ago. The 319 million layers consisted of 260 million layers producing table or commercial type eggs, 56.1 million layers producing broiler-type hatching eggs, and 2.80 million layers producing egg-type hatching eggs. Rate of lay per day on August 1, 1999, averaged 69.2 eggs per 100 layers, down 1 percent from the 70.2 a year ago.

Laying flocks in the 30 major egg producing States produced 6.50 billion eggs during July, up 2 percent from July 1998. The average number of layers during July, at 301 million, was up 3 percent from a year earlier.

Individual State estimates are available for the 30 major egg producing States. These States are listed on page 8 of this release and account for approximately 94 percent of the total U.S. egg production. Production for the other States are grouped into an "Other States" category and combined with the 30 States published individually to obtain a U.S. estimate. Individual State estimates' for "Other States" are available annually in the "**Layers and Egg Production**" report.

Egg-Type Chicks Hatched Down 4 Percent

Egg-type chicks **hatched** during July totaled 34.3 million, down 4 percent from July 1998. **Eggs in incubators** totaled 29.5 million on August 1, 1999, up 7 percent from a year ago.

Domestic placements of **egg-type pullet chicks for future hatchery supply flocks** by leading breeders totaled 231,000 during July 1999, down 22 percent from July 1998.

Broiler Hatch Up 4 Percent

The July 1999 **hatch** of broiler-type chicks, at 751 million, was up 4 percent from July of the previous year. There were 626 million **eggs in incubators** on August 1, 1999, up 4 percent from a year earlier.

Leading breeders placed 7.09 million **broiler-type pullet chicks for future domestic hatchery supply flocks** during July 1999, up 4 percent from July 1998.

**All Layers: Average Number on Hand During the Month,
United States, 1996-99**

Month	1996	1997	1998	1999
	<i>1,000 Layers</i>	<i>1,000 Layers</i>	<i>1,000 Layers</i>	<i>1,000 Layers</i>
Dec ¹	299,345	304,463	311,888	321,193
Jan	299,230	304,289	311,876	322,136
Feb	298,904	304,000	313,245	322,754
Mar	298,853	304,285	314,101	322,516
Apr	297,493	303,618	311,917	320,917
May	295,516	302,241	309,615	319,851
Jun	294,837	300,537	309,166	320,091
Jul	296,290	299,605	308,927	319,889
Aug	297,804	300,211	309,251	
Sep	298,582	303,661	311,278	
Oct	300,052	306,807	314,847	
Nov	302,386	309,670	318,797	

¹ December preceding year.

**Eggs: Production During the Month by Type,
United States, 1998-99**

Month	Total Eggs		Table Eggs		Hatching Eggs	
	1998	1999	1998	1999	1998	1999
	<i>Million Eggs</i>	<i>Million Eggs</i>	<i>Million Eggs</i>	<i>Million Eggs</i>	<i>Million Eggs</i>	<i>Million Eggs</i>
Dec ¹	6,841	7,029	5,802	5,957	1,039	1,072
Jan	6,766	6,971	5,720	5,890	1,046	1,081
Feb	6,109	6,282	5,150	5,296	959	986
Mar	6,869	7,043	5,797	5,934	1,072	1,109
Apr	6,603	6,769	5,556	5,693	1,047	1,076
May	6,665	6,925	5,584	5,808	1,081	1,117
Jun	6,456	6,734	5,433	5,644	1,023	1,090
Jul	6,720	6,906	5,674	5,800	1,046	1,106
Aug	6,694		5,655		1,039	
Sep	6,480		5,480		1,000	
Oct	6,791		5,746		1,045	
Nov	6,723		5,695		1,028	
During Year	79,717	54,659	67,292	46,022	12,425	8,637

¹ December preceding year.

**Layers and Eggs: Layers on Hand and Eggs Produced by Type,
and Forced Molt, United States, June-July 1998-99 ¹**

Item	Unit	1998	1999	1999 as % of 1998
Layers During Jun	1,000			
All Layers		309,166	320,091	104
Table Egg Type		251,864	260,231	103
Hatching Egg Type		57,302	59,860	104
Broiler-Type Hatching		54,711	57,019	104
Egg-Type Hatching		2,591	2,841	110
Eggs per 100 Layers During Jun	Number			
All Layers		2,088	2,104	101
Table Egg Type		2,157	2,169	101
Hatching Egg Type		1,785	1,821	102
Broiler-Type Hatching		1,760	1,794	102
Egg-Type Hatching		2,316	2,358	102
Eggs Produced During Jun	Million			
All Layers		6,456	6,734	104
Table Egg Type		5,433	5,644	104
Hatching Egg Type		1,023	1,090	107
Broiler-Type Hatching		963	1,023	106
Egg-Type Hatching		60	67	112
Layers on Jul 1	1,000			
All Layers		309,049	320,632	104
Table Egg Type		252,046	260,507	103
Hatching Egg Type		57,003	60,125	105
Broiler-Type Hatching		54,460	57,318	105
Egg-Type Hatching		2,543	2,807	110
Eggs per 100 Layers on Jul 1	Number			
All Layers		70.0	70.0	100
Table Egg Type		72.5	72.2	100
Hatching Egg Type		58.8	60.5	103
Broiler-Type Hatching		58.0	59.7	103
Egg-Type Hatching		76.4	77.1	101
Forced Molt Layers on Jul 1	Percent			
Percent Being Molting		3.9	5.5	141
Percent with Molt Completed		21.6	22.1	102
Layers Sold for Slaughter During Jun	1,000	15,596	17,606	113
Layers Rendered, Died, Destroyed, Composted or Disappeared For Any Reason During Jun	1,000	4,440	3,900	88
Pullets Less Than 20 Weeks of Age, Jul 1	1,000	93,721	99,282	106
Pullets Added During Jun ²	1,000	20,775	23,263	112

¹ Revised.

² Pullet chicks one day old added to pullet flocks.

**Layers and Eggs: Layers on Hand and Eggs Produced by Type,
and Forced Molt, United States, July-August 1998-99**

Item	Unit	1998 ¹	1999	1999 as % of 1998
Layers During Jul	1,000			
All Layers		308,927	319,889	104
Table Egg Type		251,731	260,347	103
Hatching Egg Type		57,196	59,542	104
Broiler-Type Hatching		54,655	56,732	104
Egg-Type Hatching		2,541	2,810	111
Eggs per 100 Layers During Jul	Number			
All Layers		2,175	2,159	99
Table Egg Type		2,254	2,228	99
Hatching Egg Type		1,829	1,858	102
Broiler-Type Hatching		1,806	1,831	101
Egg-Type Hatching		2,322	2,384	103
Eggs Produced During Jul	Million			
All Layers		6,720	6,906	103
Table Egg Type		5,674	5,800	102
Hatching Egg Type		1,046	1,106	106
Broiler-Type Hatching		987	1,039	105
Egg-Type Hatching		59	67	114
Layers on Aug 1	1,000			
All Layers		308,747	319,101	103
Table Egg Type		251,380	260,169	103
Hatching Egg Type		57,367	58,932	103
Broiler-Type Hatching		54,838	56,129	102
Egg-Type Hatching		2,529	2,803	111
Eggs per 100 Layers on Aug 1	Number			
All Layers		70.2	69.2	99
Table Egg Type		72.8	71.4	98
Hatching Egg Type		58.7	59.4	101
Broiler-Type Hatching		58.0	58.5	101
Egg-Type Hatching		73.6	76.0	103
Forced Molt Layers, Aug 1	Percent			
Percent Being Molted		3.9	4.5	115
Percent with Molt Completed		21.7	23.0	106
Layers Sold for Slaughter During Jul	1,000	16,393	17,976	110
Layers Rendered, Died, Destroyed. Composted or Disappeared For Any Reason During Jul	1,000	4,554	5,344	117
Pullets Less Than 20 Weeks of Age, Aug 1	1,000	94,365	99,140	105
Pullets Added During Jul ²	1,000	21,770	22,332	103

¹ Revised.

² Pullet chicks one day old added to pullet flocks.

**Layers and Eggs: Layers on Hand and Eggs Produced by Type, and Forced
Molt, June-July, 30 Selected States, 1998-99^{1 2}**

Item	Unit	1998	1999	1999 as % of 1998
Layers During Jun	1,000			
All Layers		291,545	301,919	104
Table Egg Type		238,533	246,561	103
Hatching Egg Type		53,012	55,358	104
Broiler-Type Hatching		50,527	52,631	104
Egg-Type Hatching		2,485	2,727	110
Eggs per 100 Layers During Jun	Number			
All Layers		2,093	2,104	101
Table Egg Type		2,161	2,168	100
Hatching Egg Type		1,786	1,821	102
Broiler-Type Hatching		1,761	1,794	102
Egg-Type Hatching		2,294	2,347	102
Eggs Produced During Jun	Million			
All Layers		6,102	6,353	104
Table Egg Type		5,155	5,345	104
Hatching Egg Type		947	1,008	106
Broiler-Type Hatching		890	944	106
Egg-Type Hatching		57	64	112
Layers on Jul 1	1,000			
All Layers		291,560	302,000	104
Table Egg Type		238,855	246,387	103
Hatching Egg Type		52,705	55,613	106
Broiler-Type Hatching		50,270	52,924	105
Egg-Type Hatching		2,435	2,689	110
Eggs per 100 Layers on Jul 1	Number			
All Layers		70.2	70.1	100
Table Egg Type		72.7	72.2	99
Hatching Egg Type		58.9	60.7	103
Broiler-Type Hatching		58.0	59.8	103
Egg-Type Hatching		76.3	77.5	102
Forced Molt Layers on Jul 1	Percent			
Percent Being Molted		3.8	5.5	145
Percent with Molt Completed		21.5	22.3	104
Layers Sold for Slaughter During Jun	1,000	14,668	16,816	115
Layers Rendered, Died, Destroyed, Composted or Disappeared For Any Reason During Jun	1,000	4,264	3,724	87
Pullets Less Than 20 Weeks of Age, Jul 1	1,000	88,633	93,532	106
Pullets Added During Jun ³	1,000	19,997	22,086	110

¹ The 30 States are listed in the table on page 8.

² Revised.

³ Pullet chicks one day old added to pullet flocks.

**Layers and Eggs: Layers on Hand and Eggs Produced by Type, and Forced
Molt, 30 Selected States, July-August, 1998-99 ¹**

Item	Unit	1998 ²	1999	1999 as % of 1998
Layers During Jul	1,000			
All Layers		291,352	301,064	103
Table Egg Type		238,462	246,070	103
Hatching Egg Type		52,890	54,994	104
Broiler-Type Hatching		50,463	52,303	104
Egg-Type Hatching		2,427	2,691	111
Eggs per 100 Layers During Jul	1,000			
All Layers		2,180	2,158	99
Table Egg Type		2,257	2,225	99
Hatching Egg Type		1,830	1,860	102
Broiler-Type Hatching		1,807	1,834	101
Egg-Type Hatching		2,307	2,378	103
Eggs Produced During Jul	Million			
All Layers		6,351	6,498	102
Table Egg Type		5,383	5,475	102
Hatching Egg Type		968	1,023	106
Broiler-Type Hatching		912	959	105
Egg-Type Hatching		56	64	114
Layers on Aug 1	1,000			
All Layers		291,101	300,093	103
Table Egg Type		238,043	245,739	103
Hatching Egg Type		53,058	54,354	102
Broiler-Type Hatching		50,646	51,668	102
Egg-Type Hatching		2,412	2,686	111
Eggs per 100 Layers on Aug 1	Number			
All Layers		70.3	69.1	98
Table Egg Type		72.9	71.3	98
Hatching Egg Type		58.7	59.5	101
Broiler-Type Hatching		58.0	58.6	101
Egg-Type Hatching		73.7	75.8	103
Forced Molt Layers, Aug 1	Percent			
Percent Being Molted		3.9	4.6	118
Percent with Molt Completed		21.5	23.1	107
Layers Sold for Slaughter During Jul	1,000	15,482	17,442	113
Layers Rendered, Died, Destroyed, Composted or Disappeared For Any Reason During Jul	1,000	4,337	5,075	117
Pullets Less Than 20 Weeks of Age, Aug 1	1,000	89,508	93,562	105
Pullets Added During Jul ³	1,000	20,746	21,543	104

¹ The 30 States are listed in the table on page 8.

² Revised.

³ Pullet chicks one day old added to pullet flocks.

**Layers and Eggs: Layers on Hand and Eggs Produced by State
and United States, During June 1998-99**

State	Table Egg Layers in Flocks 30,000 and Above		All Layers ¹		Eggs per 100 for All Layers ¹	
	1998	1999 ²	1998	1999 ²	1998	1999 ²
	<i>1,000</i>	<i>1,000</i>	<i>1,000</i>	<i>1,000</i>	<i>Number</i>	<i>Number</i>
AL	4,098	3,558	10,878	10,703	1,857	1,897
AR	4,422	4,657	14,706	15,165	1,806	1,886
CA	23,727	24,340	24,373	25,048	2,199	2,124
CO	3,066	2,866	3,667	3,412	1,963	2,140
CT	2,727	2,799	2,898	3,006	2,174	2,129
FL	9,290	9,649	9,932	10,349	2,014	2,068
GA	12,051	11,238	21,126	20,976	1,927	1,988
HI	575	593	600	622	2,112	2,010
IL	2,826	2,932	3,116	3,180	2,128	2,327
IN	20,760	21,374	21,503	22,117	2,255	2,211
IA	22,381	24,642	23,241	25,596	2,121	2,141
ME	4,631	4,465	4,751	4,577	2,273	2,294
MD	2,931	2,946	3,403	3,352	2,145	2,118
MI	4,839	5,519	5,097	5,799	2,181	2,019
MN	11,295	11,673	12,003	12,373	2,199	2,093
MS	1,708	1,460	6,646	6,598	1,911	1,895
MO	4,683	4,951	6,027	6,319	2,174	2,231
NE	10,285	11,107	10,435	11,257	2,136	2,088
NY	3,266	3,268	3,485	3,531	2,382	2,294
NC	3,709	3,412	11,252	11,259	1,902	1,865
OH	27,259	29,702	27,905	30,418	2,161	2,239
OK	1,985	1,977	4,003	4,155	1,899	1,925
OR	2,664	2,645	2,828	2,814	2,192	2,239
PA	20,268	21,052	21,605	22,437	2,203	2,179
SC	3,593	4,073	4,572	5,139	2,078	2,082
SD	2,070	1,968	2,270	2,218	2,271	2,209
TX	12,872	13,303	16,759	17,395	1,927	2,098
VA	1,517	1,520	3,722	3,654	1,961	1,998
WA	4,859	4,567	4,979	4,687	2,318	2,249
WI	3,128	3,272	3,763	3,763	2,312	2,206
30 Sts	233,485	241,528	291,545	301,919	2,093	2,104
Oth Sts ³	12,201	12,624	17,621	18,172	2,009	2,097
US	245,686	254,152	309,166	320,091	2,088	2,104

¹ Includes all layers and eggs produced in both table egg and hatching egg flocks regardless of size.

² Revised.

³ Estimates for individual States are not available.

**Layers and Eggs: Layers on Hand and Eggs Produced by State
and United States, During July 1998-99**

State	Table Egg Layers in Flocks 30,000 and Above		All Layers ¹		Eggs per 100 for All Layers ¹	
	1998	1999	1998	1999	1998	1999
	<i>1,000</i>	<i>1,000</i>	<i>1,000</i>	<i>1,000</i>	<i>Number</i>	<i>Number</i>
AL	4,097	3,499	11,019	10,749	1,869	1,926
AR	4,493	4,967	14,614	15,466	1,841	1,920
CA	24,076	24,005	24,758	24,698	2,278	2,203
CO	3,056	2,908	3,654	3,448	2,189	2,175
CT	2,644	2,801	2,809	2,982	2,350	2,314
FL	9,217	9,573	9,868	10,289	2,108	2,148
GA	12,021	11,032	21,131	20,742	1,992	2,044
HI	556	575	581	604	2,238	2,020
IL	2,816	2,839	3,109	3,080	2,316	2,338
IN	20,779	21,248	21,522	21,989	2,337	2,274
IA	22,212	24,952	23,095	25,935	2,247	2,155
ME	4,541	4,424	4,664	4,537	2,401	2,336
MD	2,774	2,898	3,246	3,265	2,249	2,175
MI	5,027	5,582	5,291	5,863	2,232	2,219
MN	11,213	11,590	11,921	12,270	2,198	2,176
MS	1,725	1,560	6,660	6,686	1,952	1,944
MO	4,862	4,744	6,181	6,094	2,297	2,199
NE	10,297	11,104	10,447	11,254	2,221	2,133
NY	3,282	3,267	3,495	3,514	2,461	2,362
NC	3,711	3,508	11,314	11,236	1,918	1,913
OH	27,123	29,749	27,751	30,448	2,223	2,246
OK	1,968	1,975	3,958	4,111	1,945	1,946
OR	2,582	2,681	2,744	2,846	2,259	2,319
PA	20,283	21,086	21,598	22,462	2,343	2,239
SC	3,576	3,920	4,529	4,968	2,186	2,134
SD	2,068	1,940	2,271	2,190	2,334	2,329
TX	12,920	13,052	16,692	17,071	2,157	2,185
VA	1,438	1,572	3,636	3,674	2,008	2,096
WA	4,884	4,606	5,004	4,726	2,386	2,336
WI	3,150	3,378	3,790	3,867	2,401	2,353
30 Sts	233,391	241,035	291,352	301,064	2,180	2,158
Oth Sts ²	12,142	13,231	17,575	18,825	2,100	2,167
US	245,533	254,266	308,927	319,889	2,175	2,159

¹ Includes all layers and eggs produced in both table egg and hatching egg flocks regardless of size.

² Estimates for individual States are not available.

**Egg Production: By Type, State, and United States,
June 1998-99**

State	Total Production		Table Eggs ¹		Hatching Eggs ¹	
	1998	1999 ²	1998	1999 ²	1998	1999 ²
	<i>Million Eggs</i>	<i>Million Eggs</i>	<i>Million Eggs</i>	<i>Million Eggs</i>	<i>Million Eggs</i>	<i>Million Eggs</i>
AL	202	203	86	77	116	126
AR	265	286	93	101	172	185
CA	538	532				
CO	72	73				
CT	63	64				
FL	200	214	188	202	12	12
GA	407	417	238	232	169	185
HI	13.0	12.5	13.0	12.5	0	0
IL	67	74	63	70	4	4
IN	485	489	473	477	12	12
IA	493	548				
ME	109	105				
MD	73	71	66	65	7	6
MI	111	117				
MN	264	259	254	249	10	10
MS	127	125	39	33	88	92
MO	131	141				
NE	223	235	223	235	0	0
NY	83	81				
NC	214	210	86	77	128	133
OH	602	681				
OK	76	80	44	44	32	36
OR	62	63	61	62	1	1
PA	476	489	461	472	15	17
SC	95	107	78	89	17	18
SD	52	49	52	49	0	0
TX	323	365				
VA	73	73	35	35	38	38
WA	115	105				
WI	87	83				
30 Sts	6,102	6,353	5,155	5,345	947	1,008
Oth Sts ³	354	381	278	299	76	82
US	6,456	6,734	5,433	5,644	1,023	1,090

¹ Data by type of flock not shown for some States to avoid disclosing individual operations.

² Revised.

³ Estimates for individual States are not available.

**Egg Production: By Type, State, and United States,
July 1998-99**

State	Total Production		Table Eggs ¹		Hatching Eggs ¹	
	1998	1999	1998	1999	1998	1999
	<i>Million Eggs</i>	<i>Million Eggs</i>	<i>Million Eggs</i>	<i>Million Eggs</i>	<i>Million Eggs</i>	<i>Million Eggs</i>
AL	206	207	84	77	122	130
AR	269	297	98	108	171	189
CA	564	544				
CO	80	75				
CT	66	69				
FL	208	221	195	208	13	13
GA	421	424	247	235	174	189
HI	13.0	12.2	13.0	12.2	0	0
IL	72	72	67	68	5	4
IN	503	500	491	487	12	13
IA	519	559				
ME	112	106				
MD	73	71	65	65	8	6
MI	118	130				
MN	262	267	252	257	10	10
MS	130	130	41	36	89	94
MO	142	134				
NE	232	240	232	240	0	0
NY	86	83				
NC	217	215	85	81	132	134
OH	617	684				
OK	77	80	45	45	32	35
OR	62	66	61	65	1	1
PA	506	503	491	487	15	16
SC	99	106	82	88	17	18
SD	53	51	53	51	0	0
TX	360	373				
VA	73	77	35	38	38	39
WA	119	110				
WI	91	91				
30 Sts	6,351	6,498	5,383	5,475	968	1,023
Oth Sts ²	369	408	291	325	78	83
US	6,720	6,906	5,674	5,800	1,046	1,106

¹ Data by type of flock not shown for some States to avoid disclosing individual operations.

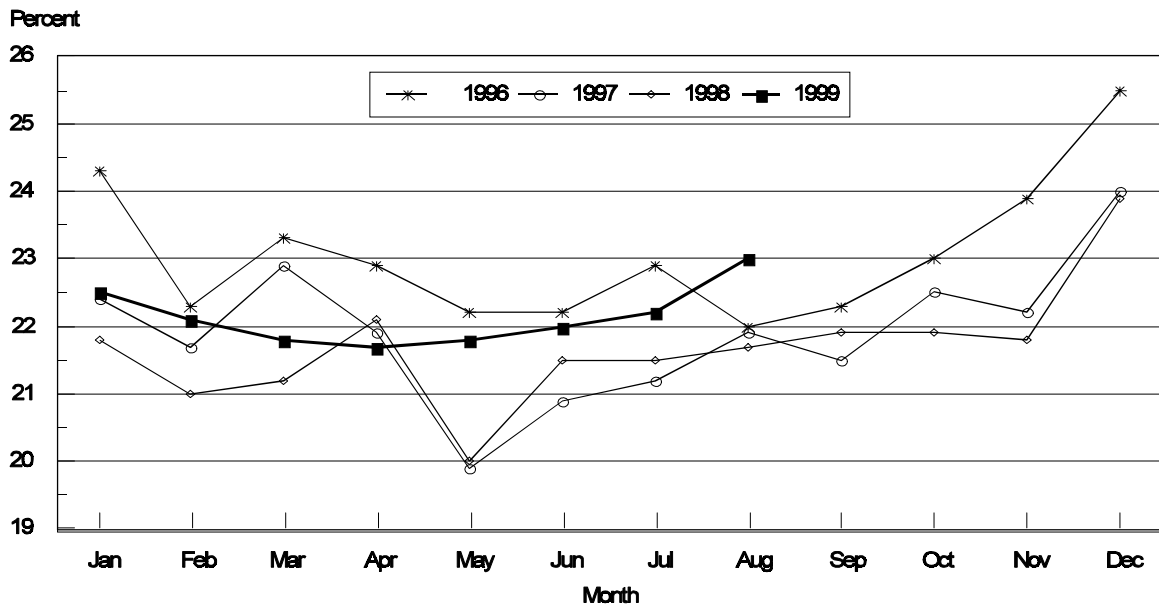
² Estimates for individual States are not available.

**Forced Molt: Percent of All Layers by Month,
United States, 1998-99 ¹**

Month	Percent Being Molted		Percent with Molt Completed	
	1998	1999	1998	1999
	<i>Percent</i>	<i>Percent</i>	<i>Percent</i>	<i>Percent</i>
Jan	4.1	4.1	21.8	22.5
Feb	5.2	4.9	21.0	22.1
Mar	4.4	3.3	21.2	21.8
Apr	2.2	2.8	22.1	21.7
May	5.5	5.6	20.0	21.8
Jun	4.8	5.2	21.4	21.9
Jul	3.9	5.5	21.6	22.1
Aug	3.9	4.5	21.7	23.0
Sep	4.1		21.9	
Oct	4.9		21.9	
Nov	3.7		21.8	
Dec	2.7		23.9	

¹ As of first of month.

**All Layers: United States
Percent Molt Completed, 1996 - 1999
First of Month**



**Forced Molt: Percent of All Layers by State
and United States, August 1998-99 ¹**

State	Percent Being Molted		Percent with Molt Completed	
	1998	1999	1998	1999
	<i>Percent</i>	<i>Percent</i>	<i>Percent</i>	<i>Percent</i>
AL	1.0	2.5	9.0	11.0
AR	3.5	2.5	8.0	11.5
CA	6.0	9.5	34.5	42.5
CO	1.5	1.5	31.0	26.5
CT	0.0	0.0	10.0	9.0
FL	5.5	7.0	37.5	39.5
GA	5.5	6.0	16.0	14.5
HI	7.0	9.0	39.5	45.5
IL	1.5	2.5	20.0	29.0
IN	2.5	1.0	33.0	29.5
IA	5.0	7.0	32.0	30.0
ME	0.5	0.0	0.0	0.0
MD	0.0	8.0	37.0	39.0
MI	4.0	2.5	15.0	28.5
MN	3.0	4.5	26.5	32.5
MS	2.5	2.0	9.0	12.5
MO	3.5	14.5	13.5	16.5
NE	7.5	8.0	21.5	25.5
NY	1.0	3.5	5.5	3.0
NC	2.0	1.5	9.5	9.0
OH	5.0	2.0	13.0	15.5
OK	2.0	1.0	12.5	8.0
OR	3.5	2.5	36.5	29.5
PA	4.0	6.5	18.5	20.0
SC	4.5	7.0	30.0	22.5
SD	4.5	4.5	24.0	31.5
TX	3.5	3.0	24.0	24.5
VA	0.0	4.0	11.0	10.5
WA	4.5	4.0	31.0	44.5
WI	4.5	1.0	28.5	22.5
30 Sts	3.9	4.6	21.5	23.1
Oth Sts ²	3.7	3.1	24.8	20.2
US	3.9	4.5	21.7	23.0

¹ As of first of month.

² Estimates for individual States are not available.

**Hatchery Production: Eggs in Incubators, Chicks Hatched,
and Placements by Type, United States, July-August 1998-99**

Item	1998	1999	1999 as % of 1998
	<i>1,000</i>	<i>1,000</i>	<i>Percent</i>
Egg-Type			
Eggs in Incubators on Aug 1	27,443	29,465	107
Chicks Hatched During Jul	35,558	34,269	96
Chicks Hatched Jan thru Jul	265,437	270,097	102
Pullets Hatched During Jul for Intended Placements in Hatchery Supply Flocks	298	231	78
7-18 Month Earlier ¹	2,968	3,108	105
Broiler-Type			
Eggs in Incubators on Aug 1	603,524	625,636	104
Chicks Hatched During Jul	722,715	750,547	104
Chicks Hatched Jan thru Jul	4,975,130	5,147,761	103
Pullets Hatched During Jul for Intended Placements in Hatchery Supply Flocks	6,788	7,088	104
7-15 Months Earlier ²	58,325	63,005	108

¹ 1999 includes pullet chicks hatched Jan 1998 through Dec 1998.

² 1999 includes pullet chicks hatched Apr 1998 through Dec 1998.

**Egg-Type Eggs in Incubators: By Region and United States,
August 1, 1998-99**

Geographic Division	1998	1999	1999 as % of 1998
	<i>1,000</i>	<i>1,000</i>	<i>Percent</i>
North Atlantic	4,447	4,959	112
E North Central	7,935	7,747	98
W North Central	5,447	4,699	86
South Atlantic	3,094	2,650	86
South Central	3,448	4,394	127
West	3,072	5,016	163
US	27,443	29,465	107

Regional Listing:

North Atlantic = CT, ME, MA, NH, NJ, NY, PA, RI, VT.

E North Central = IL, IN, MI, OH, WI.

W North Central = IA, KS, MN, MO, NE, ND, SD.

South Atlantic = DE, FL, GA, MD, NC, SC, VA, WV.

South Central = AL, AR, KY, LA, MS, OK, TN, TX.

West = AK, AZ, CA, CO, HI, ID, MT, NM, NV, OR, UT, WA, WY.

**Egg-Type Chicks Hatched: By State and United States,
July 1998-99**

State	July			Jan-Jul		
	1998	1999	1999 as % of 1998	1998	1999	1999 as % of 1998
	<i>1,000</i>	<i>1,000</i>	<i>Percent</i>	<i>1,000</i>	<i>1,000</i>	<i>Percent</i>
AR	759	773	102	5,781	5,667	98
FL	646	1,060	164	7,608	7,651	101
GA	2,009	1,708	85	14,685	13,777	94
IN	7,403	5,675	77	49,985	50,469	101
IA	4,250	3,948	93	30,330	34,758	115
KS	278	212	76	1,759	2,230	127
MN	1,659	1,637	99	13,075	13,314	102
MO	336	336	100	2,464	2,499	101
PA	5,462	4,918	90	37,867	39,190	103
Oth Sts ¹	12,756	14,002	110	101,883	100,542	99
US	35,558	34,269	96	265,437	270,097	102

¹ Not published separately to avoid disclosing data for individual operations.

Egg-Type Chicks Hatched: By Month, United States, 1997-99

Month	By Months				Cumulative			
	1997	1998	1999	1999 as % of 1998	1997	1998	1999	1999 as % of 1998
	<i>1,000</i>	<i>1,000</i>	<i>1,000</i>	<i>Percent</i>	<i>1,000</i>	<i>1,000</i>	<i>1,000</i>	<i>Percent</i>
Jan	33,752	37,159	35,653	96	33,752	37,159	35,653	96
Feb	35,655	34,593	35,648	103	69,407	71,752	71,301	99
Mar	37,347	40,590	41,325	102	106,754	112,342	112,626	100
Apr	38,842	39,043	42,043	108	145,596	151,385	154,669	102
May	39,020	39,192	40,590	104	184,616	190,577	195,259	102
Jun	36,796	39,302	40,569	103	221,412	229,879	235,828	103
Jul	33,772	35,558	34,269	96	255,184	265,437	270,097	102
Aug	33,061	33,380			288,245	298,817		
Sep	37,118	37,943			325,363	336,760		
Oct	35,262	34,649			360,625	371,409		
Nov	28,122	31,251			388,747	402,660		
Dec	35,796	35,733			424,543	438,393		

**Intended Placements: Egg-Type Pullet Chicks for Hatchery Supply
Flocks by Month and Total, United States, 1997-99 ¹**

Month	Pullet Chicks Hatched			1999 as % of 1998	Cumulative Potential Placements Relative to Current Supply Flocks 7-18 Months Earlier ²		
	1997	1998	1999		1998	1999	2000
	<i>1,000</i>	<i>1,000</i>	<i>1,000</i>	<i>Percent</i>	<i>1,000</i>	<i>1,000</i>	<i>1,000</i>
Jan	208	189	166	88	2,823	3,029	3,012
Feb	222	250	267	107	2,764	3,120	2,945
Mar	209	225	257	114	2,863	3,020	
Apr	316	333	287	86	3,034	2,942	
May	273	192	283	147	3,057	3,044	
Jun	254	354	187	53	2,976	3,132	
Jul	207	298	231	78	2,968	3,108	
Aug	285	185			2,949	3,085	
Sep	402	324			2,977	3,102	
Oct	256	358			2,993	3,134	
Nov	129	217			3,010	3,088	
Dec	207	183			2,929	3,179	
Total	2,968	3,108					

¹ Reported by leading breeders. Coverage may not be 100 percent. Includes expected pullet chicks from eggs sold during the preceding month at the rate of 125 pullet chicks per 30 dozen case of eggs.

² For July 1999, includes breeder pullet chicks hatched Jan 1998 through Dec 1998. The 7-18 months represent the first laying cycle. Molting and additional laying cycles will increase the cumulative potential placements.

**Broiler-Type Eggs in Incubators: By Region
and United States, August 1, 1998-99**

Geographic Division	1998	1999	1999 as % of 1998
	<i>1,000</i>	<i>1,000</i>	<i>Percent</i>
North Atlantic	11,839	11,876	100
E North Central	8,533	8,818	103
W North Central	22,449	22,276	99
South Atlantic	232,187	236,783	102
South Central	304,445	321,762	106
West	24,071	24,121	100
US	603,524	625,636	104

**Broiler-Type Chicks Hatched: By State
and United States, July 1998-99**

State	July			Jan-Jul		
	1998	1999	1999 as % of 1998	1998	1999	1999 as % of 1998
	<i>1,000</i>	<i>1,000</i>	<i>Percent</i>	<i>1,000</i>	<i>1,000</i>	<i>Percent</i>
AL	94,823	98,073	103	644,547	672,541	104
AR	104,738	109,626	105	732,692	754,615	103
DE	16,520	16,467	100	112,564	111,248	99
FL	8,754	9,986	114	66,325	68,641	103
GA	110,602	113,234	102	748,343	776,443	104
MD	31,342	31,906	102	216,288	217,706	101
MS	64,000	66,012	103	440,814	451,324	102
NC	62,387	64,124	103	426,651	441,990	104
PA	13,198	13,306	101	89,265	90,246	101
SC	15,588	17,130	110	103,248	114,372	111
TX	46,615	48,791	105	315,620	336,738	107
VA	24,245	24,502	101	165,420	167,580	101
CA TN & WV	39,218	41,637	106	269,055	280,748	104
15 Sts ¹	632,030	654,794	104	4,330,832	4,484,192	104
Oth Sts ²	90,685	95,753	106	644,298	663,569	103
US	722,715	750,547	104	4,975,130	5,147,761	103

¹ States in the weekly hatchery production estimating program.

² Not published separately to avoid disclosing data for individual operations.

Broiler Chicks Hatched: By Month, United States, 1997-99

Month	By Months				Cumulative			
	1997	1998	1999	1999 as % of 1998	1997	1998	1999	1999 as % of 1998
	<i>1,000</i>	<i>1,000</i>	<i>1,000</i>	<i>Percent</i>	<i>1,000</i>	<i>1,000</i>	<i>1,000</i>	<i>Percent</i>
Jan	699,952	711,373	735,348	103	699,952	711,373	735,348	103
Feb	634,142	645,180	661,739	103	1,334,094	1,356,553	1,397,087	103
Mar	718,413	730,316	755,179	103	2,052,507	2,086,869	2,152,266	103
Apr	693,717	708,260	734,340	104	2,746,224	2,795,129	2,886,606	103
May	724,679	739,319	766,161	104	3,470,903	3,534,448	3,652,767	103
Jun	704,247	717,967	744,447	104	4,175,150	4,252,415	4,397,214	103
Jul	710,622	722,715	750,547	104	4,885,772	4,975,130	5,147,761	103
Aug	708,572	715,650			5,594,344	5,690,780		
Sep	684,156	695,281			6,278,500	6,386,061		
Oct	683,185	693,189			6,961,685	7,079,250		
Nov	648,141	678,003			7,609,826	7,757,253		
Dec	711,808	737,840			8,321,634	8,495,093		

**Intended Placements: Broiler-Type Pullet Chicks for Hatchery
Supply Flocks by Month and Total, 1997-99 ¹**

Month	Pullet Chicks Hatched			1999 as % of 1998	Cumulative Potential Placements Relative to Current Supply Flocks 7-15 Months Earlier ²		
	1997	1998	1999		1998	1999	2000
	<i>1,000</i>	<i>1,000</i>	<i>1,000</i>	<i>Percent</i>	<i>1,000</i>	<i>1,000</i>	<i>1,000</i>
US Place- ments							
Jan	6,397	6,765	7,059	104	56,552	59,403	64,050
Feb	5,916	6,328	6,882	109	57,494	59,937	64,255
Mar	6,443	6,776	7,195	106	57,677	60,699	
Apr	6,036	6,687	7,038	105	58,228	61,775	
May	7,062	7,062	7,736	110	58,085	61,893	
Jun	6,008	6,932	7,041	102	58,516	62,877	
Jul	7,167	6,788	7,088	104	58,325	63,005	
Aug	6,697	7,109			59,054	63,377	
Sep	6,502	7,328			58,320	63,197	
Oct	6,254	6,883			59,088	63,460	
Nov	6,347	7,312			58,608	63,710	
Dec	6,252	6,904			58,973	64,337	
Annual Total	77,081	82,874					
Total Place- ments ³							
Jan	7,547	8,613	8,679	101			
Feb	7,122	8,273	8,473	102			
Mar	7,894	8,760	8,863	101			
Apr	7,238	8,300	8,572	103			
May	8,505	8,957	9,463	106			
Jun	7,381	8,757	8,333	95			
Jul	8,460	8,423	8,342	99			
Aug	8,132	8,686					
Sep	8,092	8,985					
Oct	8,142	8,756					
Nov	7,973	9,412					
Dec	8,237	8,830					
Annual Total	94,723	104,752					

¹ Reported by leading breeders. Coverage may not be 100 percent. Includes expected pullet chicks from eggs sold during the preceding month at the rate of 125 pullet chicks per 30 dozen case of eggs.

² For Jul 1999, includes breeder pullet chicks hatched Apr 1998 through Dec 1998.

³ U.S. production of intended placements worldwide.

Procedures and Reliability

Data Sources: Primary data for the "**Chickens and Eggs**" report are from weekly and/or monthly questionnaires sent to producers. An attempt is made to collect information for layer and egg estimates from each known contractor and independent producer who has over 30,000 table egg layers. Coverage for operations with less than 30,000 table egg layers are estimated each month based on data reported in December. Approximately 900 contractors, independent egg producers, and started pullet operations are contacted each month. All known hatcheries, approximately 360, are contacted for information on a weekly and/or monthly basis.

Revisions: The previous month's estimates are subject to revision if late reports or corrected data indicates a different level. Additionally, revisions needed after the monthly report will be made at the end of the marketing year and published in the annual summaries of "**Layers and Egg Production**" and "**Hatchery Production**".

Procedures and Reliability: Operations are mailed a questionnaire and given adequate time to respond by mail. Those that do not respond are phoned. Great care is exercised to ensure that all operations are accounted for during each survey period. However, there are usually missing reports that must be accounted for in the estimates.

Sound statistical methodology is employed to derive estimates from the reported data. All data are checked for unusual values. All operations' data are compared to their own past operating profiles and also to trends from other operations. Data for missing operations are estimated based on similar operations or historical data. Survey data are subject to non-sampling errors such as omissions and mistakes in reporting and in processing. While these errors cannot be measured directly, they are minimized by reviewing all data for consistency and reasonableness.

Egg-type chicks hatched are comprised of all chicks of egg-type domesticated breeds including males and chicks destined for hatchery supply flocks and research purposes. The relationship of chicks hatched to chicken inventory and poultry marketings is carefully monitored. The disposition of egg-type chicks hatched prior to placement into the laying flock can vary significantly, which can make comparisons to changes in layer inventory inconsistent over time.

Intended placement data reported by leading breeders include pullet chicks expected from eggs sold the preceding month. The breeders in this report account for a large percentage of replacement pullets for hatchery supply flocks. Production of replacement pullets by these breeders indicates the number of pullets available to hatchery egg supply flocks several months before the pullets will actually move into the flocks. Beginning with the January 1996 publication the broiler-type cumulative potential placements went from 7-14 months earlier to 7-15 months earlier. The egg-type cumulative potential placements of 7-18 months represent the first laying cycle. Molting and additional laying cycles will increase the cumulative potential placements of egg-type hatching flocks.

The next "Chickens and Eggs" report will be released at 3 p.m. ET on September 21, 1999.

The United States Department of Agriculture (USDA) prohibits discrimination in all its programs on the basis of race, color, national origin, gender, religion, age, disability, political beliefs, sexual orientation, and marital or family status. (Not all prohibited bases apply to all programs.) Persons with disabilities who require alternative means for communication of program information (braille, large print, audiotape, etc.) should contact the USDA's TARGET Center at 202-720-2600 (voice and TDD).

To file a complaint of discrimination, write USDA, Director, Office of Civil Rights, Room 326-W, Whitten Building, 14th and Independence Avenue, SW, Washington, D.C., 20250-9410, or call 202-720-5964 (voice or TDD). USDA is an equal opportunity provider and employer.

ACCESS TO REPORTS!!

For your convenience, there are several ways to obtain NASS reports, data products, and services:

INTERNET ACCESS

All NASS reports are available free of charge on the worldwide Internet. For access, connect to the Internet and go to the NASS Home Page at: <http://www.usda.gov/nass/>. Select "Today's Reports" or Publications and then Reports by Calendar or Publications and then Search, by Title or Subject.

E-MAIL SUBSCRIPTION

There are two options for subscribing via e-mail. All NASS reports are available by subscription free of charge direct to your e-mail address. 1) Starting with the NASS Home Page at <http://www.usda.gov/nass/>, click on **Publications**, then click on the **Subscribe by E-mail** button which takes you to the page describing e-mail delivery of reports. Finally, click on **Go to the Subscription Page** and follow the instructions. 2) If you do NOT have Internet access, send an e-mail message to: usda-reports@usda.mannlib.cornell.edu. In the body of the message type the word: **list**.

AUTOFAX ACCESS

NASSFax service is available for some reports from your fax machine. Please call 202-720-2000, using the handset attached to your fax. Respond to the voice prompts. Document 0411 is a list of available reports.

----- PRINTED REPORTS OR DATA PRODUCTS

CALL OUR TOLL-FREE ORDER DESK: 800-999-6779 (U.S. and Canada)
Other areas, please call 703-834-0125 FAX: 703-834-0110
(Visa, MasterCard, check, or money order acceptable for payment.)

ASSISTANCE

For **assistance** with general agricultural statistics or further information about NASS or its products or services, contact the **Agricultural Statistics Hotline** at **800-727-9540**, 7:30 a.m. to 4:00 p.m. ET, or e-mail: nass@nass.usda.gov.

USDA to Hold Public Forum

October 18, 1999

Holiday Inn Mart Plaza

Chicago, Illinois

The National Agricultural Statistics Service will be organizing an open forum for Data Users. The purpose will be to provide updates on pending changes in the USDA statistical and information programs, and to seek comments and input from data users. Other agencies to be represented will include the Agricultural Marketing Service, the Economic Research Service, the Foreign Agricultural Service, and the World Agricultural Outlook Board.

For registration details, see the NASS home page at <http://www.usda.gov/nass/> or contact Fred Vogel (NASS) at (202) 720-3896 or at hq_ed_od@nass.usda.gov