

Chickens and Eggs

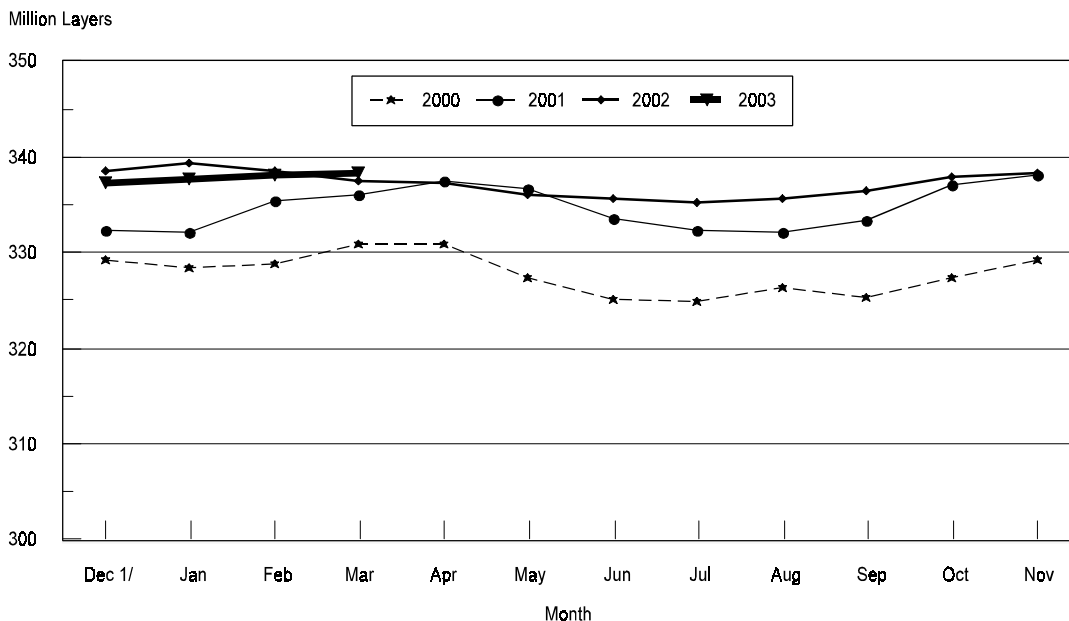
Released March 21, 2003, by the National Agricultural Statistics Service (NASS), Agricultural Statistics Board, U.S. Department of Agriculture. For information on "Chickens and Eggs" call Tom Kruchten at (202) 690-4870, for "Hatch" call Jody Roberts at (202) 690-8632, office hours 7:30 a.m. to 4:00 p.m. ET.

February Egg Production Up 1 Percent

U.S. egg production totaled 6.62 billion during February 2003, up 1 percent from last year. Production included 5.63 billion table eggs and 985 million hatching eggs, of which 927 million were broiler-type and 58.0 million were egg-type. The total number of layers during February 2003 averaged 338 million, up slightly from a year earlier. February egg production per 100 layers was 1,957 eggs, up 1 percent from February 2002.

February 2003 contained 20 weekdays, one holiday and four Saturdays, the same as February 2002.

All Layers: 1st of Month United States, 2000 - 2003



1/ Previous Year

All layers in the U.S. on March 1, 2003, totaled 338 million, up slightly from a year ago. The 338 million layers consisted of 278 million layers producing table type eggs, 57.4 million layers producing broiler-type hatching eggs, and 2.62 million layers producing egg-type hatching eggs. Rate of lay per day on March 1, 2003, averaged 69.6 eggs per 100 layers, down 1 percent from a year ago.

Laying flocks in the 30 major egg producing States produced 6.18 billion eggs during February 2003, up slightly from a year ago. The average number of layers during February, at 316 million, was down slightly from a year ago.

Individual State estimates are available for the 30 major egg producing States. These States are listed on page 8 of this release and account for approximately 94 percent of the total U.S. egg production. Production for the other States are grouped into an "Other States" category and combined with the 30 States published individually to obtain a U.S. estimate. Individual State estimates for "Other States" are available annually in the "**Chickens and Eggs Summary**" report.

Egg-Type Chicks Hatched Down 13 Percent

Egg-type chicks hatched during February totaled 30.0 million, down 13 percent from February 2002. Eggs in incubators totaled 30.5 million on March 1, 2003, down 7 percent from a year ago.

Domestic placements of egg-type pullet chicks for future hatchery supply flocks by leading breeders totaled 221,000 during February 2003, down 11 percent from February 2002.

Broiler Hatch Down 1 Percent

The February 2003 hatch of broiler-type chicks, at 695 million, was down 1 percent from February of the previous year. There were 630 million eggs in incubators on March 1, 2003, down 3 percent from a year earlier.

Leading breeders placed 6.7 million broiler-type pullet chicks for future domestic hatchery supply flocks during February 2003, down 8 percent from February 2002.

**All Layers: Average Number on Hand During the Month,
United States, 2000-03**

Month	2000	2001	2002	2003
	<i>1,000 Layers</i>	<i>1,000 Layers</i>	<i>1,000 Layers</i>	<i>1,000 Layers</i>
Dec ¹	328,878	332,283	339,105	337,473
Jan	328,657	333,748	338,966	337,900
Feb	329,941	335,763	337,991	338,190
Mar	330,961	336,822	337,447	
Apr	329,185	337,141	336,776	
May	326,288	335,163	335,865	
Jun	325,057	332,928	335,412	
Jul	325,663	332,244	335,498	
Aug	325,853	332,808	336,159	
Sep	326,337	335,276	337,264	
Oct	328,278	337,593	338,159	
Nov	330,830	338,366	337,808	

¹ December preceding year.

**Eggs: Production During the Month by Type,
United States, 2002-03**

Month	Total Eggs		Table Eggs		Hatching Eggs	
	2002	2003	2002	2003	2002	2003
	<i>Million Eggs</i>	<i>Million Eggs</i>	<i>Million Eggs</i>	<i>Million Eggs</i>	<i>Million Eggs</i>	<i>Million Eggs</i>
Dec ¹	7,420	7,381	6,343	6,325	1,076	1,055
Jan	7,264	7,329	6,170	6,246	1,093	1,082
Feb	6,581	6,617	5,592	5,631	988	985
Mar	7,417		6,312		1,104	
Apr	7,105		6,016		1,089	
May	7,297		6,161		1,135	
Jun	7,126		6,037		1,089	
Jul	7,347		6,243		1,104	
Aug	7,356		6,263		1,093	
Sep	7,147		6,100		1,046	
Oct	7,412		6,345		1,067	
Nov	7,226		6,204		1,020	
During Year	86,698	21,327	73,786	18,202	12,904	3,122

¹ December preceding year.

**Layers and Eggs: Layers on Hand and Eggs Produced by Type,
and Forced Molt, United States, January-February 2002-03**

Item	Unit	2002	2003	2003 as % of 2002
Layers During Jan	1,000			
All Layers		338,966	337,900	100
Table Egg Type		279,360	279,092	100
Hatching Egg Type		59,606	58,808	99
Broiler-Type Hatching		56,980	56,125	98
Egg-Type Hatching		2,626	2,683	102
Eggs per 100 Layers During Jan	Number			
All Layers		2,143	2,169	101
Table Egg Type		2,209	2,238	101
Hatching Egg Type		1,834	1,840	100
Broiler-Type Hatching		1,808	1,814	100
Egg-Type Hatching		2,399	2,385	99
Eggs Produced During Jan	Million			
All Layers		7,264	7,329	101
Table Egg Type		6,170	6,246	101
Hatching Egg Type		1,093	1,082	99
Broiler-Type Hatching		1,030	1,018	99
Egg-Type Hatching		63	64	102
Layers on Feb 1	1,000			
All Layers		338,465	338,063	100
Table Egg Type		278,640	279,044	100
Hatching Egg Type		59,825	59,019	99
Broiler-Type Hatching		57,178	56,314	98
Egg-Type Hatching		2,647	2,705	102
Eggs per 100 Layers on Feb 1	Number			
All Layers		68.4	70.0	102
Table Egg Type		70.4	72.3	103
Hatching Egg Type		59.1	59.3	100
Broiler-Type Hatching		58.2	58.5	101
Egg-Type Hatching		78.3	76.3	97
Forced Molt Layers on Feb 1	Percent			
Percent Being Molted		4.6	4.5	98
Percent with Molt Completed		22.0	23.9	109
Layers Sold for Slaughter During Jan	1,000	17,398	14,669	84
Layers Rendered, Died, Destroyed, Composted or Disappeared For Any Reason During Jan	1,000	5,181	4,838	93
Pullets Less Than 20 Weeks of Age, Feb 1	1,000	94,331	93,298	99
Pullets Added During Jan ¹	1,000	23,150	22,308	96

¹ Pullet chicks one day old added to pullet flocks.

**Layers and Eggs: Layers on Hand and Eggs Produced by Type,
and Forced Molt, United States, February-March 2002-03**

Item	Unit	2002 ¹	2003	2003 as % of 2002
Layers During Feb	1,000			
All Layers		337,991	338,190	100
Table Egg Type		278,289	278,678	100
Hatching Egg Type		59,702	59,512	100
Broiler-Type Hatching		57,053	56,842	100
Egg-Type Hatching		2,649	2,670	101
Eggs per 100 Layers During Feb	Number			
All Layers		1,947	1,957	101
Table Egg Type		2,009	2,021	101
Hatching Egg Type		1,655	1,655	100
Broiler-Type Hatching		1,630	1,631	100
Egg-Type Hatching		2,190	2,172	99
Eggs Produced During Feb	Million			
All Layers		6,581	6,617	101
Table Egg Type		5,592	5,631	101
Hatching Egg Type		988	985	100
Broiler-Type Hatching		930	927	100
Egg-Type Hatching		58	58	100
Layers on Mar 1	1,000			
All Layers		337,478	338,266	100
Table Egg Type		277,923	278,285	100
Hatching Egg Type		59,555	59,981	101
Broiler-Type Hatching		56,917	57,358	101
Egg-Type Hatching		2,638	2,623	99
Eggs per 100 Layers on Mar 1	Number			
All Layers		70.5	69.6	99
Table Egg Type		73.0	72.0	99
Hatching Egg Type		59.0	58.5	99
Broiler-Type Hatching		58.1	57.7	99
Egg-Type Hatching		78.7	77.8	99
Forced Molt Layers, Mar 1	Percent			
Percent Being Molted		3.7	3.3	89
Percent with Molt Completed		22.2	23.6	106
Layers Sold for Slaughter During Feb	1,000	14,491	13,633	94
Layers Rendered, Died, Destroyed. Composted or Disappeared For Any Reason During Feb	1,000	5,357	5,896	110
Pullets Less Than 20 Weeks of Age, Mar 1	1,000	95,814	94,487	99
Pullets Added During Feb ²	1,000	22,621	21,378	95

¹ Revised.

² Pullet chicks one day old added to pullet flocks.

**Layers and Eggs: Layers on Hand and Eggs Produced by Type, and Forced
Molt, 30 Selected States, January-February, 2002-03 ¹**

Item	Unit	2002	2003	2003 as % of 2002
Layers During Jan	1,000			
All Layers		317,930	315,688	99
Table Egg Type		263,069	261,702	99
Hatching Egg Type		54,861	53,986	98
Broiler-Type Hatching		52,336	51,383	98
Egg-Type Hatching		2,525	2,603	103
Eggs per 100 Layers During Jan	Number			
All Layers		2,143	2,172	101
Table Egg Type		2,208	2,241	101
Hatching Egg Type		1,830	1,843	101
Broiler-Type Hatching		1,802	1,816	101
Egg-Type Hatching		2,416	2,382	99
Eggs Produced During Jan	Million			
All Layers		6,813	6,856	101
Table Egg Type		5,809	5,861	101
Hatching Egg Type		1,004	995	99
Broiler-Type Hatching		943	933	99
Egg-Type Hatching		61	62	102
Layers on Feb 1	1,000			
All Layers		317,519	315,997	100
Table Egg Type		262,408	261,722	100
Hatching Egg Type		55,111	54,275	98
Broiler-Type Hatching		52,568	51,652	98
Egg-Type Hatching		2,543	2,623	103
Eggs per 100 Layers on Feb 1	Number			
All Layers		68.3	70.1	103
Table Egg Type		70.3	72.4	103
Hatching Egg Type		58.9	59.4	101
Broiler-Type Hatching		57.9	58.5	101
Egg-Type Hatching		78.4	76.4	97
Forced Molt Layers on Feb 1	Percent			
Percent Being Molted		4.5	4.3	96
Percent with Molt Completed		21.9	23.9	109
Layers Sold for Slaughter During Jan	1,000	15,998	13,467	84
Layers Rendered, Died, Destroyed, Composted or Disappeared For Any Reason During Jan	1,000	4,923	4,472	91
Pullets Less Than 20 Weeks of Age, Feb 1	1,000	88,702	86,806	98
Pullets Added During Jan ²	1,000	21,876	21,302	97

¹ The 30 States are listed in the table on page 8.

² Pullet chicks one day old added to pullet flocks.

Layers and Eggs: Layers on Hand and Eggs Produced by Type, and Forced Molt, 30 Selected States, February-March, 2002-03 ¹

Item	Unit	2002 ²	2003	2003 as % of 2002
Layers During Feb	1,000			
All Layers		317,043	315,834	100
Table Egg Type		262,048	261,116	100
Hatching Egg Type		54,995	54,718	99
Broiler-Type Hatching		52,443	52,133	99
Egg-Type Hatching		2,552	2,585	101
Eggs per 100 Layers During Feb	1,000			
All Layers		1,944	1,957	101
Table Egg Type		2,006	2,019	101
Hatching Egg Type		1,651	1,658	100
Broiler-Type Hatching		1,625	1,632	100
Egg-Type Hatching		2,194	2,166	99
Eggs Produced During Feb	Million			
All Layers		6,164	6,180	100
Table Egg Type		5,256	5,273	100
Hatching Egg Type		908	907	100
Broiler-Type Hatching		852	851	100
Egg-Type Hatching		56	56	100
Layers on Mar 1	1,000			
All Layers		316,537	315,632	100
Table Egg Type		261,677	260,489	100
Hatching Egg Type		54,860	55,143	101
Broiler-Type Hatching		52,309	52,607	101
Egg-Type Hatching		2,551	2,536	99
Eggs per 100 Layers on Mar 1	Number			
All Layers		70.4	69.5	99
Table Egg Type		72.8	71.9	99
Hatching Egg Type		58.9	58.6	99
Broiler-Type Hatching		58.0	57.7	99
Egg-Type Hatching		79.2	77.8	98
Forced Molt Layers, Mar 1	Percent			
Percent Being Molted		3.7	3.4	92
Percent with Molt Completed		22.0	23.4	106
Layers Sold for Slaughter During Feb	1,000	13,246	12,623	95
Layers Rendered, Died, Destroyed, Composted or Disappeared For Any Reason During Feb	1,000	5,202	5,604	108
Pullets Less Than 20 Weeks of Age, Mar 1	1,000	90,080	88,250	98
Pullets Added During Feb ³	1,000	21,282	19,689	93

¹ The 30 States are listed in the table on page 8.

² Revised.

³ Pullet chicks one day old added to pullet flocks.

**Layers and Eggs: Layers on Hand and Eggs Produced by State
and United States, During January 2002-03**

State	Table Egg Layers in Flocks 30,000 and Above		All Layers ¹		Eggs per 100 for All Layers ¹	
	2002	2003	2002	2003	2002	2003
	<i>1,000</i>	<i>1,000</i>	<i>1,000</i>	<i>1,000</i>	<i>Number</i>	<i>Number</i>
AL	2,802	2,378	10,583	9,989	1,909	1,892
AR	4,755	4,582	14,836	14,849	1,887	1,899
CA	23,323	21,194	23,914	21,831	2,162	2,194
CO	2,995	3,419	3,513	3,894	2,135	2,286
CT	3,110	2,975	3,169	3,035	2,423	2,405
FL	10,138	10,053	10,866	10,601	2,144	2,170
GA	11,894	10,676	21,391	19,883	1,963	2,082
HI	489	484	547	526	1,828	1,939
IL	3,317	3,240	3,551	3,461	2,084	2,254
IN	21,372	22,323	22,075	22,949	2,202	2,227
IA	35,368	36,902	36,192	37,663	2,249	2,273
ME	3,813	4,291	3,865	4,343	2,554	1,957
MD	2,915	2,971	3,217	3,189	2,331	2,415
MI	6,227	6,497	6,483	6,748	2,146	2,223
MN	11,427	10,800	12,162	11,408	2,286	2,314
MS	1,857	1,838	6,794	6,737	1,943	1,989
MO	5,498	5,368	6,928	6,812	2,136	2,275
NE	11,598	11,562	11,698	11,662	2,060	2,195
NY	3,667	3,378	3,884	3,611	2,420	2,409
NC	3,140	3,330	11,078	10,845	1,932	1,973
OH	29,651	30,058	30,182	30,567	2,197	2,182
OK	2,016	2,016	4,168	4,285	1,932	1,937
OR	2,646	2,697	2,826	2,885	2,335	2,322
PA	22,548	23,479	23,938	24,921	2,289	2,339
SC	4,549	4,148	5,557	5,298	2,105	2,076
SD	2,168	2,263	2,368	2,463	2,154	2,071
TX	14,655	14,322	19,118	18,809	2,045	2,100
VA	1,463	1,342	3,434	3,358	1,922	2,025
WA	5,115	4,884	5,196	4,964	2,256	2,196
WI	3,820	3,591	4,397	4,102	2,388	2,194
30 Sts	258,336	257,061	317,930	315,688	2,143	2,172
Oth Sts ²	15,119	16,259	21,036	22,212	2,144	2,129
US	273,455	273,320	338,966	337,900	2,143	2,169

¹ Includes all layers and eggs produced in both table egg and hatching egg flocks regardless of size.

² Estimates for individual States are not available.

**Layers and Eggs: Layers on Hand and Eggs Produced by State
and United States, During February 2002-03**

State	Table Egg Layers in Flocks 30,000 and Above		All Layers ¹		Eggs per 100 for All Layers ¹	
	2002	2003	2002	2003	2002	2003
	<i>1,000</i>	<i>1,000</i>	<i>1,000</i>	<i>1,000</i>	<i>Number</i>	<i>Number</i>
AL	2,708	2,419	10,567	9,975	1,732	1,724
AR	4,871	4,559	14,935	15,271	1,701	1,716
CA	23,485	20,485	24,037	21,104	1,956	1,981
CO	2,988	3,401	3,503	3,911	1,941	2,020
CT	3,100	2,951	3,157	3,010	2,208	1,927
FL	9,911	10,323	10,638	10,868	1,927	1,969
GA	11,460	11,028	20,928	20,375	1,821	1,850
HI	481	466	538	509	1,673	1,768
IL	3,218	3,506	3,457	3,735	1,938	1,928
IN	21,526	22,229	22,223	22,872	1,975	2,007
IA	35,418	36,954	36,236	37,738	2,037	2,009
ME	4,023	4,248	4,074	4,300	2,202	2,023
MD	2,890	2,984	3,154	3,203	2,061	2,061
MI	6,178	6,519	6,438	6,770	2,022	2,024
MN	11,582	10,745	12,322	11,350	2,069	2,115
MS	1,839	1,871	6,785	6,846	1,769	1,811
MO	5,498	5,453	6,923	6,861	1,993	2,055
NE	11,524	11,622	11,624	11,722	1,893	2,022
NY	3,749	3,429	3,960	3,670	2,197	2,125
NC	3,182	3,368	11,146	11,141	1,723	1,741
OH	29,545	29,632	30,068	30,133	1,979	1,958
OK	2,025	2,015	4,205	4,159	1,745	1,755
OR	2,507	2,889	2,701	3,067	2,147	1,989
PA	22,272	23,020	23,656	24,403	2,114	2,131
SC	4,451	4,099	5,497	5,267	1,892	2,013
SD	2,147	2,299	2,347	2,499	1,917	1,961
TX	14,504	14,257	18,943	18,720	1,863	1,939
VA	1,414	1,279	3,491	3,320	1,719	1,747
WA	5,037	4,878	5,118	4,959	2,052	1,976
WI	3,793	3,562	4,372	4,076	2,059	1,963
30 Sts	257,326	256,490	317,043	315,834	1,944	1,957
Oth Sts ²	15,069	16,431	20,948	22,356	1,991	1,955
US	272,395	272,921	337,991	338,190	1,947	1,957

¹ Includes all layers and eggs produced in both table egg and hatching egg flocks regardless of size.

² Estimates for individual States are not available.

**Egg Production: By Type, State, and United States,
January 2002-03**

State	Total Production		Table Eggs ¹		Hatching Eggs ¹	
	2002	2003	2002	2003	2002	2003
	<i>Million Eggs</i>	<i>Million Eggs</i>	<i>Million Eggs</i>	<i>Million Eggs</i>	<i>Million Eggs</i>	<i>Million Eggs</i>
AL	202	189	64	52	138	137
AR	280	282	106	101	174	181
CA	517	479				
CO	75	89				
CT	77	73				
FL	233	230	218	221	15	9
GA	420	414	243	242	177	172
HI	10.0	10.2	10.0	10.2	0	0
IL	74	78	70	74	4	4
IN	486	511	473	499	13	12
IA	814	856				
ME	99	85				
MD	75	77	70	74	5	3
MI	139	150				
MN	278	264	269	260	9	4
MS	132	134	41	42	91	92
MO	148	155				
NE	241	256	241	256	0	0
NY	94	87				
NC	214	214	77	81	137	133
OH	663	667				
OK	81	83	47	47	34	36
OR	66	67	64	65	2	2
PA	548	583	531	565	17	18
SC	117	110	99	91	18	19
SD	51	51	51	51	0	0
TX	391	395				
VA	66	68	30	31	36	37
WA	117	109				
WI	105	90				
30 Sts	6,813	6,856	5,809	5,861	1,004	995
Oth Sts ²	451	473	361	385	89	87
US	7,264	7,329	6,170	6,246	1,093	1,082

¹ Data by type of flock not shown for some States to avoid disclosing individual operations.

² Estimates for individual States are not available.

**Egg Production: By Type, State, and United States,
February 2002-03**

State	Total Production		Table Eggs ¹		Hatching Eggs ¹	
	2002	2003	2002	2003	2002	2003
	<i>Million Eggs</i>	<i>Million Eggs</i>	<i>Million Eggs</i>	<i>Million Eggs</i>	<i>Million Eggs</i>	<i>Million Eggs</i>
AL	183	172	56	49	127	123
AR	254	262	97	91	157	171
CA	470	418				
CO	68	79				
CT	70	58				
FL	205	214	192	207	13	7
GA	381	377	222	221	159	156
HI	9.0	9.0	9.0	9.0	0	0
IL	67	72	64	68	3	4
IN	439	459	427	448	12	11
IA	738	758				
ME	90	87				
MD	65	66	61	63	4	3
MI	130	137				
MN	255	240	246	237	9	3
MS	120	124	38	40	82	84
MO	138	141				
NE	220	237	220	237	0	0
NY	87	78				
NC	192	194	68	72	124	122
OH	595	590				
OK	74	73	43	42	31	31
OR	58	61	56	59	2	2
PA	499	520	483	505	16	15
SC	104	106	88	88	16	18
SD	45	49	45	49	0	0
TX	353	363				
VA	60	58	26	24	34	34
WA	105	98				
WI	90	80				
30 Sts	6,164	6,180	5,256	5,273	908	907
Oth Sts ²	417	437	336	358	80	78
US	6,581	6,617	5,592	5,631	988	985

¹ Data by type of flock not shown for some States to avoid disclosing individual operations.

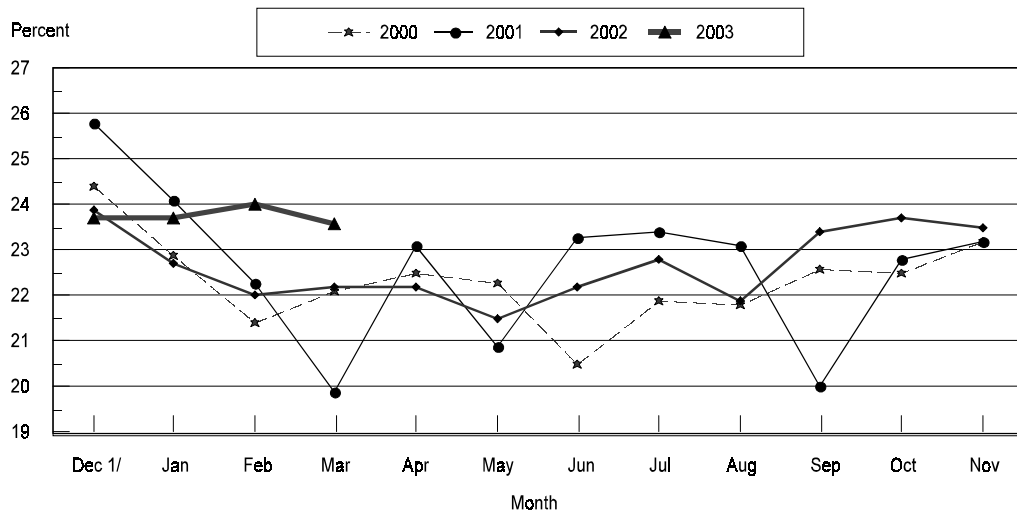
² Estimates for individual States are not available.

**Forced Molt: Percent of All Layers by Month,
United States, 2002-03 ¹**

Month	Percent Being Molted		Percent with Molt Completed	
	2002	2003	2002	2003
	<i>Percent</i>	<i>Percent</i>	<i>Percent</i>	<i>Percent</i>
Jan	4.1	4.4	22.7	23.7
Feb	4.6	4.5	22.0	23.9
Mar	3.7	3.3	22.2	23.6
Apr	3.6		22.2	
May	5.7		21.5	
Jun	4.2		22.2	
Jul	3.7		22.8	
Aug	4.6		21.9	
Sep	4.2		23.4	
Oct	4.6		23.7	
Nov	3.8		23.5	
Dec	2.7		23.7	

¹ As of first of month.

All Layers: United States
Percent Molt Completed, 2000 - 2003
First of Month



1/ Previous year

**Forced Molt: Percent of All Layers by State
and United States, March 2002-03 ¹**

State	Percent Being Molted		Percent with Molt Completed	
	2002	2003	2002	2003
	<i>Percent</i>	<i>Percent</i>	<i>Percent</i>	<i>Percent</i>
AL	2.5	0.5	8.5	10.0
AR	1.5	0.5	6.5	10.5
CA	4.0	5.5	31.5	39.5
CO	2.5	4.5	29.5	20.0
CT	0.0	3.5	10.0	4.0
FL	7.0	5.0	26.5	27.5
GA	3.5	1.0	13.0	16.0
HI	6.0	7.0	44.0	53.0
IL	0.0	8.5	35.0	32.5
IN	9.0	4.5	29.5	30.5
IA	3.5	4.0	31.0	34.0
ME	0.0	0.0	0.0	0.0
MD	12.0	3.5	29.5	24.5
MI	2.0	5.0	31.0	31.0
MN	2.5	0.5	27.0	23.0
MS	0.0	0.0	11.5	13.5
MO	3.0	1.5	20.0	16.0
NE	4.5	6.5	25.5	23.0
NY	3.5	0.0	5.0	6.0
NC	0.0	1.0	7.5	10.0
OH	2.5	8.0	19.5	23.5
OK	0.5	0.0	5.0	7.5
OR	3.0	0.0	32.5	28.5
PA	3.5	2.5	20.0	18.5
SC	2.5	1.5	29.0	25.5
SD	4.5	2.5	31.5	26.0
TX	5.0	0.5	20.0	25.5
VA	3.5	7.5	10.0	5.5
WA	11.5	9.5	46.5	42.0
WI	2.5	3.5	28.5	33.5
30 Sts	3.7	3.4	22.0	23.4
Oth Sts ²	3.4	2.3	25.1	26.0
US	3.7	3.3	22.2	23.6

¹ As of first of month.

² Estimates for individual States are not available.

**Hatchery Production: Eggs in Incubators, Chicks Hatched,
and Placements by Type, United States, February-March 2002-03**

Item	2002	2003	2003 as % of 2002
	<i>1,000</i>	<i>1,000</i>	<i>Percent</i>
Egg-Type			
Eggs in Incubators on Mar 1	32,833	30,547	93
Chicks Hatched During Feb	34,326	29,988	87
Chicks Hatched Jan thru Feb	69,859	63,487	91
Pullets Hatched During Feb for Intended			
Placements in Hatchery Supply Flocks	247	221	89
7-18 Month Earlier ¹	3,205	2,916	91
Broiler-Type			
Eggs in Incubators on Mar 1	649,723	630,187	97
Chicks Hatched During Feb	702,576	694,590	99
Chicks Hatched Jan thru Feb	1,478,245	1,454,363	98
Pullets Hatched During Feb for Intended			
Placements in Hatchery Supply Flocks	7,275	6,659	92
7-15 Months Earlier ²	60,382	62,767	104

¹ 2003 includes pullet chicks hatched Aug 2001 through Jul 2002.

² 2003 includes pullet chicks hatched Nov 2001 through Jul 2002.

**Egg-Type Eggs in Incubators: By Region and United States,
March 1, 2002-03**

Geographic Division	2002	2003	2003 as % of 2002
	<i>1,000</i>	<i>1,000</i>	<i>Percent</i>
North Atlantic	4,821	4,338	90
E North Central	7,413	6,303	85
W North Central	6,520	6,382	98
South Atlantic	3,941	2,838	72
South Central	5,117	5,332	104
West	5,021	5,354	107
US	32,833	30,547	93

Regional Listing:

North Atlantic = CT, ME, MA, NH, NJ, NY, PA, RI, VT.

E North Central = IL, IN, MI, OH, WI.

W North Central = IA, KS, MN, MO, NE, ND, SD.

South Atlantic = DE, FL, GA, MD, NC, SC, VA, WV.

South Central = AL, AR, KY, LA, MS, OK, TN, TX.

West = AK, AZ, CA, CO, HI, ID, MT, NM, NV, OR, UT, WA, WY.

**Egg-Type Chicks Hatched: By State and United States,
February 2002-03**

State	February			Jan-Feb		
	2002	2003	2003 as % of 2002	2002	2003	2003 as % of 2002
	<i>1,000</i>	<i>1,000</i>	<i>Percent</i>	<i>1,000</i>	<i>1,000</i>	<i>Percent</i>
AR	811	814	100	1,616	1,620	100
FL	611	620	101	1,108	1,285	116
GA	2,157	2,229	103	4,388	4,729	108
IN	4,883	4,197	86	9,738	9,466	97
IA	4,356	5,101	117	10,076	10,503	104
MN	1,360	1,465	108	2,679	2,901	108
PA	4,094	3,709	91	8,634	8,062	93
Oth Sts ¹	16,054	11,853	74	31,620	24,921	79
US	34,326	29,988	87	69,859	63,487	91

¹ Not published separately to avoid disclosing data for individual operations.

Egg-Type Chicks Hatched: By Month, United States, 2001-03

Month	By Months				Cumulative			
	2001	2002	2003	2003 as % of 2002	2001	2002	2003	2003 as % of 2002
	<i>1,000</i>	<i>1,000</i>	<i>1,000</i>	<i>Percent</i>	<i>1,000</i>	<i>1,000</i>	<i>1,000</i>	<i>Percent</i>
Jan	36,706	35,533	33,499	94	36,706	35,533	33,499	94
Feb	37,816	34,326	29,988	87	74,522	69,859	63,487	91
Mar	40,993	36,717			115,515	106,576		
Apr	42,768	38,212			158,283	144,788		
May	42,636	38,944			200,919	183,732		
Jun	40,806	35,292			241,725	219,024		
Jul	38,640	35,218			280,365	254,242		
Aug	34,978	35,877			315,343	290,119		
Sep	36,916	35,391			352,259	325,510		
Oct	35,816	32,044			388,075	357,554		
Nov	32,081	31,078			420,156	388,632		
Dec	31,657	32,153			451,813	420,785		

**Intended Placements: Egg-Type Pullet Chicks for Hatchery Supply
Flocks by Month and Total, United States, 2001-03 ¹**

Month	Pullet Chicks Hatched			2003 as % of 2002	Cumulative Potential Placements Relative to Current Supply Flocks 7-18 Months Earlier ²		
	2001	2002	2003		2001	2002	2003
	<i>1,000</i>	<i>1,000</i>	<i>1,000</i>	<i>Percent</i>	<i>1,000</i>	<i>1,000</i>	<i>1,000</i>
Jan	236	228	198	87	3,129	3,158	2,974
Feb	214	247	221	89	3,191	3,205	2,916
Mar	284	237			3,090	3,239	2,886
Apr	311	295			3,096	3,225	2,926
May	315	319			3,057	3,134	2,962
Jun	261	221			3,103	3,087	2,924
Jul	340	282			3,173	3,048	2,905
Aug	251	221			3,197	3,040	2,875
Sep	219	259			3,160	3,073	2,849
Oct	150	186			3,158	3,026	
Nov	261	223			3,160	3,010	
Dec	206	187			3,132	3,014	
Total	3,048	2,905					

¹ Reported by leading breeders. Coverage may not be 100 percent. Includes expected pullet chicks from eggs sold during the preceding month at the rate of 125 pullet chicks per 30 dozen case of eggs.

² For February 2003, includes breeder pullet chicks hatched Aug 2001 through Jul 2002. The 7-18 months represent the first laying cycle. Molting and additional laying cycles will increase the cumulative potential placements.

**Broiler-Type Eggs in Incubators: By Region
and United States, March 1, 2002-03**

Geographic Division	2002	2003	2003 as % of 2002
	<i>1,000</i>	<i>1,000</i>	<i>Percent</i>
North Atlantic	12,592	11,107	88
E North Central	7,491	7,362	98
W North Central	21,529	20,132	94
South Atlantic	242,047	233,214	96
South Central	343,017	334,647	98
West	23,047	23,725	103
US	649,723	630,187	97

**Broiler-Type Chicks Hatched: By State
and United States, February 2002-03**

State	February			Jan-Feb		
	2002	2003	2003 as % of 2002	2002	2003	2003 as % of 2002
	<i>1,000</i>	<i>1,000</i>	<i>Percent</i>	<i>1,000</i>	<i>1,000</i>	<i>Percent</i>
AL	97,410	91,495	94	204,853	194,143	95
AR	100,381	101,976	102	211,319	212,943	101
DE	11,771	11,607	99	24,439	24,250	99
FL	7,529	5,224	69	16,339	10,980	67
GA	102,976	102,398	99	217,057	213,718	98
KY	21,788	22,105	101	44,900	45,913	102
MD	31,651	32,096	101	66,239	67,234	102
MS	62,327	63,505	102	132,829	133,847	101
NC	61,281	59,258	97	129,518	125,243	97
OK	20,927	22,177	106	44,063	45,145	102
PA	11,171	11,185	100	24,435	23,656	97
SC	14,921	15,610	105	31,584	32,614	103
TX	50,822	48,505	95	107,163	103,259	96
VA	21,668	21,995	102	46,043	45,462	99
CA, LA, MO, TN, & WV	64,466	64,647	100	136,029	135,579	100
19 Sts ¹	681,089	673,783	99	1,436,810	1,413,986	98
Oth Sts ²	21,487	20,807	100	41,435	40,377	99
US	702,576	694,590	99	1,478,245	1,454,363	98

¹ States in the weekly hatchery production estimating program.

² Not published separately to avoid disclosing data for individual operations.

Broiler-Type Chicks Hatched: By Month, United States, 2001-03

Month	By Months				Cumulative			
	2001	2002	2003	2003 as % of 2002	2001	2002	2003	2003 as % of 2002
	<i>1,000</i>	<i>1,000</i>	<i>1,000</i>	<i>Percent</i>	<i>1,000</i>	<i>1,000</i>	<i>1,000</i>	<i>Percent</i>
Jan	745,093	775,669	759,773	98	745,093	775,669	759,773	98
Feb	680,823	702,576	694,590	99	1,425,916	1,478,245	1,454,363	98
Mar	773,760	790,342			2,199,676	2,268,587		
Apr	755,455	764,982			2,955,131	3,033,569		
May	785,704	798,315			3,740,835	3,831,884		
Jun	766,534	776,397			4,507,369	4,608,281		
Jul	769,449	781,421			5,276,818	5,389,702		
Aug	771,550	779,803			6,048,368	6,169,505		
Sep	738,355	741,140			6,786,723	6,910,645		
Oct	747,495	720,310			7,534,218	7,630,955		
Nov	702,607	690,024			8,236,825	8,320,979		
Dec	769,731	753,633			9,006,556	9,074,612		

**Intended Placements: Broiler-Type Pullet Chicks for Hatchery
Supply Flocks by Month and Total, 2001-03 ¹**

Month	Pullet Chicks Hatched			2003 as % of 2002	Cumulative Potential Placements Relative to Current Supply Flocks 7-15 Months Earlier ²		
	2001	2002	2003		2001	2002	2003
	<i>1,000</i>	<i>1,000</i>	<i>1,000</i>	<i>Percent</i>	<i>1,000</i>	<i>1,000</i>	<i>1,000</i>
US Place- ments							
Jan	6,685	6,660	6,269	94	63,304	60,750	62,869
Feb	6,748	7,275	6,659	92	62,493	60,382	62,767
Mar	6,752	6,775			62,797	60,771	62,955
Apr	6,398	6,814			62,267	60,989	63,069
May	7,117	7,597			62,100	61,008	62,674
Jun	6,822	7,206			62,204	61,521	62,337
Jul	6,326	6,602			61,323	61,346	62,037
Aug	7,494	7,449			61,244	61,608	61,492
Sep	6,647	6,691			60,557	61,766	60,554
Oct	6,704	6,265			60,480	61,719	
Nov	7,261	6,938			60,568	62,207	
Dec	6,577	6,475			60,397	62,310	
Annual Total	81,531	82,747					
Total Place- ments ³							
Jan	7,615	8,084	7,388	91			
Feb	8,275	8,491	8,094	95			
Mar	8,325	7,997					
Apr	7,915	8,119					
May	8,647	8,982					
Jun	8,220	8,802					
Jul	7,687	8,083					
Aug	9,133	8,913					
Sep	8,047	8,058					
Oct	7,848	7,438					
Nov	9,017	8,202					
Dec	8,119	8,015					
Annual Total	98,848	99,184					

¹ Reported by leading breeders. Coverage may not be 100 percent. Includes expected pullet chicks from eggs sold during the preceding month at the rate of 125 pullet chicks per 30 dozen case of eggs.

² For Feb 2003, includes breeder pullet chicks hatched Nov 2001 through Jul 2002.

³ U.S. production of intended placements worldwide.

Procedures and Reliability

Data Sources: Primary data for the "**Chickens and Eggs**" report are from weekly and/or monthly questionnaires sent to producers. An attempt is made to collect information for layer and egg estimates from each known contractor and independent producer who has over 30,000 table egg layers. Coverage for operations with less than 30,000 table egg layers are estimated each month based on data reported in December. Approximately 900 contractors, independent egg producers, and started pullet operations are contacted each month. All known hatcheries, approximately 330, are contacted for information on a weekly and/or monthly basis.

Revisions: The previous month's estimates are subject to revision if late reports or corrected data indicates a different level. Additionally, revisions needed after the monthly report will be made at the end of the marketing year and published in the annual summaries of "**Chickens and Eggs Summary**" and "**Hatchery Production**".

Procedures and Reliability: Operations are mailed a questionnaire and given adequate time to respond by mail. Those that do not respond are phoned. Great care is exercised to ensure that all operations are accounted for during each survey period. However, there are usually missing reports that must be accounted for in the estimates.

Sound statistical methodology is employed to derive estimates from the reported data. All data are checked for unusual values. All operations' data are compared to their own past operating profiles and also to trends from other operations. Data for missing operations are estimated based on similar operations or historical data. Survey data are subject to non-sampling errors such as omissions and mistakes in reporting and in processing. While these errors cannot be measured directly, they are minimized by reviewing all data for consistency and reasonableness.

Egg-type chicks hatched are comprised of all chicks of egg-type domesticated breeds including males and chicks destined for hatchery supply flocks and research purposes. The relationship of chicks hatched to chicken inventory and poultry marketings is carefully monitored. The disposition of egg-type chicks hatched prior to placement into the laying flock can vary significantly, which can make comparisons to changes in layer inventory inconsistent over time.

Intended placement data reported by leading breeders include pullet chicks expected from eggs sold the preceding month. The breeders in this report account for a large percentage of replacement pullets for hatchery supply flocks. Production of replacement pullets by these breeders indicates the number of pullets available to hatchery supply flocks several months before the pullets will actually move into the flocks. "Hatchery Supply Flocks" include all generations of layers which could lay eggs to supply a hatchery. This includes the generations of parents, grandparents, great-grandparents, pedigree, etc. Also included are research flocks, vaccine flocks, and specific pathogen-free flocks. The broiler cumulative potential placements are a moving total of the intended placements 7-15 months earlier. The egg-type cumulative potential placements of 7-18 months represent the first laying cycle. Molting and additional laying cycles will increase the cumulative potential placements of egg-type hatching flocks.

The next "Chickens and Eggs" report will be released at 3 p.m. ET on April 22, 2003.

The United States Department of Agriculture (USDA) prohibits discrimination in all its programs on the basis of race, color, national origin, gender, religion, age, disability, political beliefs, sexual orientation, and marital or family status. (Not all prohibited bases apply to all programs.) Persons with disabilities who require alternative means for communication of program information (braille, large print, audiotape, etc.) should contact the USDA's TARGET Center at 202-720-2600 (voice and TDD).

To file a complaint of discrimination, write USDA, Director, Office of Civil Rights, Room 326-W, Whitten Building, 1400 Independence Avenue, SW, Washington, D.C., 20250-9410, or call 202-720-5964 (voice or TDD). USDA is an equal opportunity provider and employer.

ACCESS TO REPORTS!!

For your convenience, there are several ways to obtain NASS reports, data products, and services:

INTERNET ACCESS

All NASS reports are available free of charge on the worldwide Internet. For access, connect to the Internet and go to the NASS Home Page at: **<http://www.usda.gov/nass/>**. Select "Today's Reports" or Publications and then Reports Calendar or Publications and then Search, by Title or Subject.

E-MAIL SUBSCRIPTION

All NASS reports are available by subscription free of charge direct to your e-mail address. Starting with the NASS Home Page at **<http://www.usda.gov/nass/>**, click on **Publications**, then click on the **Subscribe by E-mail** button which takes you to the page describing e-mail delivery of reports. Finally, click on **Go to the Subscription Page** and follow the instructions.

AUTOFAX ACCESS

NASSFax service is available for some reports from your fax machine. Please call 202-720-2000, using the handset attached to your fax. Respond to the voice prompts. Document 0411 is a list of available reports.

PRINTED REPORTS OR DATA PRODUCTS

CALL OUR TOLL-FREE ORDER DESK: 800-999-6779 (U.S. and Canada)

Other areas, please call 703-605-6220

FAX: 703-605-6900

(Visa, MasterCard, check, or money order acceptable for payment.)

ASSISTANCE

For **assistance** with general agricultural statistics or further information about NASS or its products or services, contact the **Agricultural Statistics Hotline** at **800-727-9540**, 7:30 a.m. to 4:00 p.m. ET, or e-mail: **nass@nass.usda.gov**.
