

Chickens and Eggs

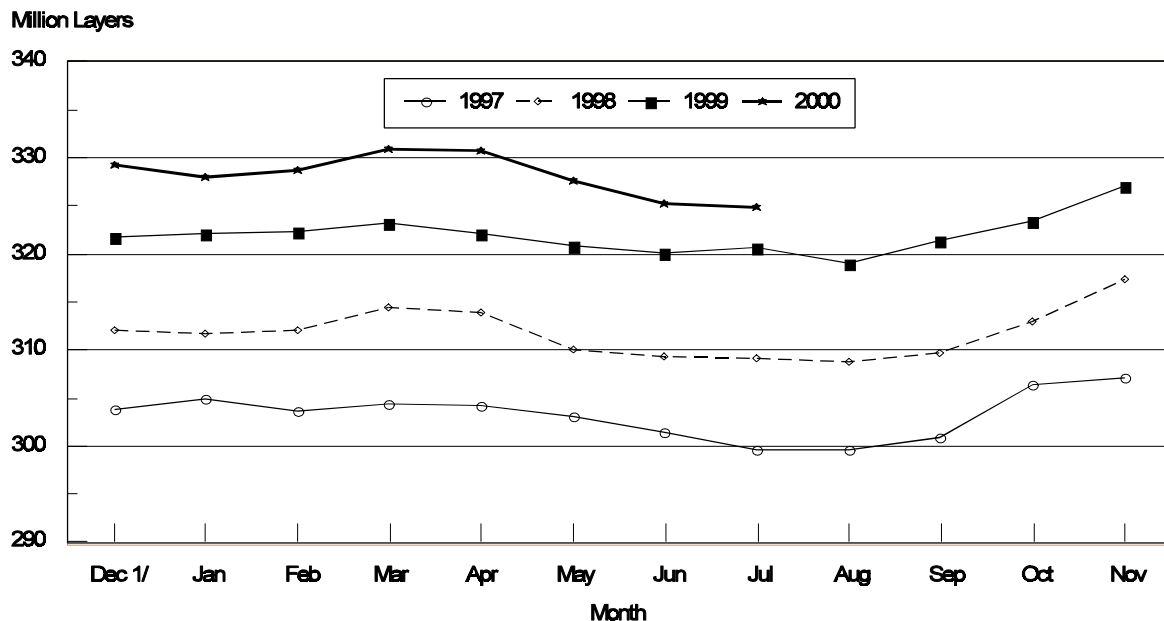
Released July 24, 2000, by the National Agricultural Statistics Service (NASS), Agricultural Statistics Board, U.S. Department of Agriculture. For information on Chickens and Eggs call Tom Kruchten at (202) 690-4870. For information on Hatch call Jody Roberts at (202) 690-8632, office hours 7:30 a.m. to 4:00 p.m. ET.

June Egg Production Up 1 Percent

U.S. egg production totaled 6.80 billion during June 2000, up 1 percent from the 6.74 billion produced in 1999. Production included 5.72 billion table eggs and 1.08 billion hatching eggs, of which 1.02 billion were broiler-type and 65.0 million were egg-type. The total number of layers during June 2000 averaged 325 million, up 1 percent from the total average number of layers during June 1999. June egg production per 100 layers was 2,092 eggs, down 1 percent from 2,104 eggs in June 1999.

June 2000 contained 22 weekdays and four Saturdays, the same as June 1999.

All Layers: 1st of Month United States, 1997 - 2000



All layers in the U.S. on July 1, 2000, totaled 325 million, up 1 percent from a year ago. The 325 million layers consisted of 266 million layers producing table or commercial type eggs, 56.5 million layers producing broiler-type hatching eggs, and 2.72 million layers producing egg-type hatching eggs. Rate of lay per day on July 1, 2000, averaged 69.4 eggs per 100 layers, down 1 percent from the 69.8 a year ago.

Laying flocks in the 30 major egg producing States produced 6.66 billion eggs during June, up 2 percent from June 1999. The average number of layers during June, at 306 million, was up 1 percent from a year earlier.

Individual State estimates are available for the 30 major egg producing States. These States are listed on page 8 of this release and account for approximately 94 percent of the total U.S. egg production. Production for the other States are grouped into an "Other States" category and combined with the 30 States published individually to obtain a U.S. estimate. Individual State estimates' for "Other States" are available annually in the "**Chickens and Eggs Summary**" report.

Egg-Type Chicks Hatched Down 12 Percent

Egg-type chicks **hatched** during June totaled 36.6 million, down 12 percent from June 1999. **Eggs in incubators** totaled 30.6 million on July 1, 2000, down slightly from a year ago.

Domestic placements of **egg-type pullet chicks for future hatchery supply flocks** by leading breeders totaled 223,000 during June 2000, up 19 percent from June 1999.

Broiler Hatch Up Slightly

The June 2000 **hatch** of broiler-type chicks, at 748 million, was up slightly from June of the previous year. There were 615 million **eggs in incubators** on July 1, 2000, down 2 percent from a year earlier.

Leading breeders placed 6.83 million **broiler-type pullet chicks for future domestic hatchery supply flocks** during June 2000, down 3 percent from June 1999.

**All Layers: Average Number on Hand During the Month,
United States, 1997-00**

Month	1997	1998	1999	2000
	<i>1,000 Layers</i>	<i>1,000 Layers</i>	<i>1,000 Layers</i>	<i>1,000 Layers</i>
Dec ¹	304,463	311,898	321,960	328,824
Jan	304,289	311,906	322,326	328,557
Feb	304,000	313,285	322,797	329,824
Mar	304,285	314,141	322,758	330,927
Apr	303,618	311,957	321,515	329,243
May	302,241	309,655	320,498	326,426
Jun	300,537	309,206	320,441	325,110
Jul	299,605	308,967	319,811	
Aug	300,211	309,291	320,173	
Sep	303,661	311,358	322,394	
Oct	306,807	315,222	325,272	
Nov	309,670	319,625	328,253	

¹ December preceding year.

**Eggs: Production During the Month by Type,
United States, 1999-00**

Month	Total Eggs		Table Eggs		Hatching Eggs	
	1999	2000	1999	2000	1999	2000
	<i>Million Eggs</i>	<i>Million Eggs</i>	<i>Million Eggs</i>	<i>Million Eggs</i>	<i>Million Eggs</i>	<i>Million Eggs</i>
Dec ¹	7,051	7,279	5,979	6,198	1,072	1,081
Jan	6,979	7,155	5,898	6,068	1,081	1,087
Feb	6,281	6,659	5,295	5,632	986	1,027
Mar	7,052	7,235	5,943	6,111	1,109	1,124
Apr	6,784	7,013	5,708	5,911	1,076	1,102
May	6,941	7,105	5,824	5,971	1,117	1,134
Jun	6,742	6,801	5,652	5,720	1,090	1,081
Jul	6,903		5,797		1,106	
Aug	6,971		5,876		1,095	
Sep	6,860		5,797		1,063	
Oct	7,131		6,039		1,092	
Nov	7,016		5,967		1,049	
During Year	82,711	49,247	69,775	41,611	12,936	7,636

¹ December preceding year.

**Layers and Eggs: Layers on Hand and Eggs Produced by Type,
and Forced Molt, United States, May-June 1999-00**

Item	Unit	1999	2000	2000 as % of 1999
Layers During May	1,000			
All Layers		320,498	326,426	102
Table Egg Type		260,930	266,272	102
Hatching Egg Type		59,568	60,154	101
Broiler-Type Hatching		56,745	57,266	101
Egg-Type Hatching		2,823	2,888	102
Eggs per 100 Layers During May	Number			
All Layers		2,166	2,177	101
Table Egg Type		2,232	2,242	100
Hatching Egg Type		1,875	1,885	101
Broiler-Type Hatching		1,847	1,861	101
Egg-Type Hatching		2,444	2,355	96
Eggs Produced During May	Million			
All Layers		6,941	7,105	102
Table Egg Type		5,824	5,971	103
Hatching Egg Type		1,117	1,134	102
Broiler-Type Hatching		1,048	1,066	102
Egg-Type Hatching		69	68	99
Layers on Jun 1	1,000			
All Layers		320,211	325,193	102
Table Egg Type		260,634	265,777	102
Hatching Egg Type		59,577	59,416	100
Broiler-Type Hatching		56,708	56,585	100
Egg-Type Hatching		2,869	2,831	99
Eggs per 100 Layers on Jun 1	Number			
All Layers		70.1	69.7	99
Table Egg Type		72.2	71.6	99
Hatching Egg Type		60.5	60.9	101
Broiler-Type Hatching		59.7	60.1	101
Egg-Type Hatching		78.2	76.7	98
Forced Molt Layers on Jun 1	Percent			
Percent Being Molting		5.2	5.8	112
Percent with Molt Completed		21.9	20.4	93
Layers Sold for Slaughter During May	1,000	17,407	18,346	105
Layers Rendered, Died, Destroyed, Composted or Disappeared For Any Reason During May	1,000	3,707	5,156	139
Pullets Less Than 20 Weeks of Age, Jun 1	1,000	99,099	98,379	99
Pullets Added During May ¹	1,000	22,695	24,797	109

¹ Pullet chicks one day old added to pullet flocks.

**Layers and Eggs: Layers on Hand and Eggs Produced by Type,
and Forced Molt, United States, June-July 1999-00**

Item	Unit	1999 ¹	2000	2000 as % of 1999
Layers During Jun	1,000			
All Layers		320,441	325,110	101
Table Egg Type		260,581	265,794	102
Hatching Egg Type		59,860	59,316	99
Broiler-Type Hatching		57,019	56,532	99
Egg-Type Hatching		2,841	2,784	98
Eggs per 100 Layers During Jun	Number			
All Layers		2,104	2,092	99
Table Egg Type		2,169	2,152	99
Hatching Egg Type		1,821	1,822	100
Broiler-Type Hatching		1,794	1,797	100
Egg-Type Hatching		2,358	2,335	99
Eggs Produced During Jun	Million			
All Layers		6,742	6,801	101
Table Egg Type		5,652	5,720	101
Hatching Egg Type		1,090	1,081	99
Broiler-Type Hatching		1,023	1,016	99
Egg-Type Hatching		67	65	97
Layers on Jul 1	1,000			
All Layers		320,672	324,969	101
Table Egg Type		260,547	265,784	102
Hatching Egg Type		60,125	59,185	98
Broiler-Type Hatching		57,318	56,463	99
Egg-Type Hatching		2,807	2,722	97
Eggs per 100 Layers on Jul 1	Number			
All Layers		69.8	69.4	99
Table Egg Type		72.0	71.4	99
Hatching Egg Type		60.5	60.4	100
Broiler-Type Hatching		59.7	59.6	100
Egg-Type Hatching		77.1	76.8	100
Forced Molt Layers, Jul 1	Percent			
Percent Being Molting		5.5	4.8	87
Percent with Molt Completed		22.1	21.9	99
Layers Sold for Slaughter During Jun	1,000	17,607	16,822	96
Layers Rendered, Died, Destroyed. Composted or Disappeared For Any Reason During Jun	1,000	3,900	4,388	112
Pullets Less Than 20 Weeks of Age, Jul 1	1,000	99,662	100,029	100
Pullets Added During Jun ²	1,000	23,263	23,682	102

¹ Revised.

² Pullet chicks one day old added to pullet flocks.

**Layers and Eggs: Layers on Hand and Eggs Produced by Type, and Forced
Molt, 30 Selected States, May-June, 1999-00 ¹**

Item	Unit	1999	2000	2000 as % of 1999
Layers During May	1,000			
All Layers		302,208	306,370	101
Table Egg Type		247,144	251,066	102
Hatching Egg Type		55,064	55,304	100
Broiler-Type Hatching		52,354	52,520	100
Egg-Type Hatching		2,710	2,784	103
Eggs per 100 Layers During May	Number			
All Layers		2,166	2,174	100
Table Egg Type		2,231	2,240	100
Hatching Egg Type		1,874	1,875	100
Broiler-Type Hatching		1,845	1,851	100
Egg-Type Hatching		2,435	2,335	96
Eggs Produced During May	Million			
All Layers		6,547	6,662	102
Table Egg Type		5,515	5,625	102
Hatching Egg Type		1,032	1,037	100
Broiler-Type Hatching		966	972	101
Egg-Type Hatching		66	65	98
Layers on Jun 1	1,000			
All Layers		301,806	305,316	101
Table Egg Type		246,717	250,683	102
Hatching Egg Type		55,089	54,633	99
Broiler-Type Hatching		52,329	51,904	99
Egg-Type Hatching		2,760	2,729	99
Eggs per 100 Layers on Jun 1	Number			
All Layers		70.1	69.6	99
Table Egg Type		72.2	71.6	99
Hatching Egg Type		60.5	60.7	100
Broiler-Type Hatching		59.6	59.8	100
Egg-Type Hatching		78.1	76.4	98
Forced Molt Layers on Jun 1	Percent			
Percent Being Molting		5.2	5.8	112
Percent with Molt Completed		22.0	20.3	92
Layers Sold for Slaughter During May	1,000	16,549	17,388	105
Layers Rendered, Died, Destroyed, Composted or Disappeared For Any Reason During May	1,000	3,538	4,812	136
Pullets Less Than 20 Weeks of Age, Jun 1	1,000	93,757	92,181	98
Pullets Added During May ²	1,000	21,486	23,467	109

¹ The 30 States are listed in the table on page 8.

² Pullet chicks one day old added to pullet flocks.

**Layers and Eggs: Layers on Hand and Eggs Produced by Type, and Forced
Molt, 30 Selected States, June-July, 1999-00 ¹**

Item	Unit	1999 ²	2000	2000 as % of 1999
Layers During Jun	1,000			
All Layers		301,919	305,202	101
Table Egg Type		246,561	250,703	102
Hatching Egg Type		55,358	54,499	98
Broiler-Type Hatching		52,631	51,816	98
Egg-Type Hatching		2,727	2,683	98
Eggs per 100 Layers During Jun	1,000			
All Layers		2,104	2,088	99
Table Egg Type		2,168	2,149	99
Hatching Egg Type		1,821	1,809	99
Broiler-Type Hatching		1,794	1,783	99
Egg-Type Hatching		2,347	2,311	98
Eggs Produced During Jun	Million			
All Layers		6,353	6,373	100
Table Egg Type		5,345	5,387	101
Hatching Egg Type		1,008	986	98
Broiler-Type Hatching		944	924	98
Egg-Type Hatching		64	62	97
Layers on Jul 1	1,000			
All Layers		302,000	305,044	101
Table Egg Type		246,387	250,707	102
Hatching Egg Type		55,613	54,337	98
Broiler-Type Hatching		52,924	51,714	98
Egg-Type Hatching		2,689	2,623	98
Eggs per 100 Layers on Jul 1	Number			
All Layers		70.1	69.5	99
Table Egg Type		72.2	71.6	99
Hatching Egg Type		60.7	59.9	99
Broiler-Type Hatching		59.8	59.0	99
Egg-Type Hatching		77.5	76.5	99
Forced Molt Layers, Jul 1	Percent			
Percent Being Molted		5.5	4.7	85
Percent with Molt Completed		22.3	21.8	98
Layers Sold for Slaughter During Jun	1,000	16,816	15,874	94
Layers Rendered, Died, Destroyed, Composted or Disappeared For Any Reason During Jun	1,000	3,724	4,207	113
Pullets Less Than 20 Weeks of Age, Jul 1	1,000	93,912	93,907	100
Pullets Added During Jun ³	1,000	22,086	22,593	102

¹ The 30 States are listed in the table on page 8.

² Revised.

³ Pullet chicks one day old added to pullet flocks.

**Layers and Eggs: Layers on Hand and Eggs Produced by State
and United States, During May 1999-00**

State	Table Egg Layers in Flocks 30,000 and Above		All Layers ¹		Eggs per 100 for All Layers ¹	
	1999	2000	1999	2000	1999	2000
	<i>1,000</i>	<i>1,000</i>	<i>1,000</i>	<i>1,000</i>	<i>Number</i>	<i>Number</i>
AL	3,636	2,789	10,641	10,302	1,973	1,922
AR	4,414	5,084	14,863	15,496	1,951	1,968
CA	24,385	23,155	25,098	23,729	2,120	2,170
CO	2,874	3,445	3,413	3,946	2,227	2,205
CT	2,876	2,917	3,083	3,051	2,173	2,294
FL	9,881	9,630	10,580	10,324	2,127	2,102
GA	11,243	11,193	20,858	20,408	2,033	2,058
HI	600	579	630	607	2,079	2,076
IL	2,997	3,257	3,258	3,532	2,271	2,237
IN	21,180	22,270	21,907	22,947	2,237	2,284
IA	24,711	27,004	25,627	27,847	2,244	2,341
ME	4,533	4,064	4,646	4,127	2,454	2,416
MD	2,994	2,893	3,410	3,295	2,258	2,185
MI	5,387	5,855	5,659	6,136	2,142	2,122
MN	11,635	11,740	12,348	12,473	2,154	2,237
MS	1,387	1,835	6,517	6,987	1,949	1,975
MO	5,228	4,825	6,619	6,108	2,266	2,210
NE	11,089	11,717	11,239	11,867	2,127	2,107
NY	3,311	3,687	3,589	3,906	2,340	2,355
NC	3,355	3,231	11,258	11,141	1,936	1,885
OH	30,174	30,698	30,887	31,389	2,360	2,227
OK	1,991	1,956	4,129	4,118	1,986	1,991
OR	2,634	2,762	2,799	2,932	2,251	2,285
PA	21,036	20,848	22,449	22,552	2,285	2,306
SC	4,126	4,037	5,203	5,031	2,114	2,067
SD	1,975	1,930	2,224	2,190	2,338	2,329
TX	13,271	12,888	17,333	17,208	2,100	2,144
VA	1,402	1,363	3,531	3,424	1,954	2,074
WA	4,633	4,826	4,753	4,946	2,281	2,313
WI	3,165	3,703	3,657	4,351	2,297	2,275
30 Sts	242,123	246,181	302,208	306,370	2,166	2,174
Oth Sts ²	12,741	14,176	18,290	20,056	2,154	2,209
US	254,864	260,357	320,498	326,426	2,166	2,177

¹ Includes all layers and eggs produced in both table egg and hatching egg flocks regardless of size.

² Estimates for individual States are not available.

**Layers and Eggs: Layers on Hand and Eggs Produced by State
and United States, During June 1999-00**

State	Table Egg Layers in Flocks 30,000 and Above		All Layers ¹		Eggs per 100 for All Layers ¹	
	1999	2000	1999	2000	1999	2000
	<i>1,000</i>	<i>1,000</i>	<i>1,000</i>	<i>1,000</i>	<i>Number</i>	<i>Number</i>
AL	3,558	2,779	10,703	10,406	1,897	1,845
AR	4,657	5,012	15,165	15,269	1,886	1,912
CA	24,340	23,133	25,048	23,735	2,124	2,111
CO	2,866	3,361	3,412	3,857	2,140	2,178
CT	2,799	2,920	3,006	3,054	2,129	2,194
FL	9,649	9,470	10,349	10,138	2,068	2,062
GA	11,238	11,487	20,976	20,480	1,988	1,963
HI	593	585	622	610	2,010	1,934
IL	2,932	3,286	3,180	3,552	2,327	2,111
IN	21,374	21,979	22,117	22,643	2,211	2,217
IA	24,642	27,028	25,596	27,863	2,141	2,232
ME	4,465	4,121	4,577	4,183	2,294	2,142
MD	2,946	2,862	3,352	3,262	2,118	1,901
MI	5,519	6,046	5,799	6,325	2,019	2,073
MN	11,673	11,905	12,373	12,631	2,093	2,161
MS	1,460	1,755	6,598	6,778	1,895	1,933
MO	4,951	4,981	6,319	6,254	2,231	2,175
NE	11,107	11,902	11,257	12,052	2,088	1,975
NY	3,268	3,704	3,531	3,913	2,294	2,300
NC	3,412	3,237	11,259	11,151	1,865	1,811
OH	29,702	30,279	30,418	30,972	2,239	2,137
OK	1,977	1,952	4,155	4,068	1,925	1,893
OR	2,645	2,717	2,814	2,887	2,239	2,182
PA	21,052	20,944	22,437	22,491	2,179	2,210
SC	4,073	4,122	5,139	5,126	2,082	1,970
SD	1,968	1,933	2,218	2,193	2,209	2,234
TX	13,303	12,527	17,395	16,749	2,098	2,078
VA	1,520	1,339	3,654	3,334	1,998	2,010
WA	4,567	4,834	4,687	4,954	2,249	2,229
WI	3,272	3,622	3,763	4,272	2,206	2,060
30 Sts	241,528	245,822	301,919	305,202	2,104	2,088
Oth Sts ²	12,974	14,060	18,522	19,908	2,100	2,150
US	254,502	259,882	320,441	325,110	2,104	2,092

¹ Includes all layers and eggs produced in both table egg and hatching egg flocks regardless of size.

² Estimates for individual States are not available.

**Egg Production: By Type, State, and United States,
May 1999-00**

State	Total Production		Table Eggs ¹		Hatching Eggs ¹	
	1999	2000	1999	2000	1999	2000
	<i>Million Eggs</i>	<i>Million Eggs</i>	<i>Million Eggs</i>	<i>Million Eggs</i>	<i>Million Eggs</i>	<i>Million Eggs</i>
AL	210	198	84	63	126	135
AR	290	305	100	114	190	191
CA	532	515				
CO	76	87				
CT	67	70				
FL	225	217	213	205	12	12
GA	424	420	237	237	187	183
HI	13.1	12.6	13.1	12.6	0	0
IL	74	79	70	74	4	5
IN	490	524	478	511	12	13
IA	575	652				
ME	114	100				
MD	77	72	71	65	6	7
MI	121	130				
MN	266	279	255	269	11	10
MS	127	138	33	44	94	94
MO	150	135				
NE	239	250	239	250	0	0
NY	84	92				
NC	218	210	79	78	139	132
OH	729	699				
OK	82	82	46	46	36	36
OR	63	67	62	66	1	1
PA	513	520	495	497	18	23
SC	110	104	91	86	19	18
SD	52	51	52	51	0	0
TX	364	369				
VA	69	71	31	32	38	39
WA	108	114				
WI	84	99				
30 Sts	6,547	6,662	5,515	5,625	1,032	1,037
Oth Sts ²	394	443	309	346	85	97
US	6,941	7,105	5,824	5,971	1,117	1,134

¹ Data by type of flock not shown for some States to avoid disclosing individual operations.

² Estimates for individual States are not available.

**Egg Production: By Type, State, and United States,
June 1999-00**

State	Total Production		Table Eggs ¹		Hatching Eggs ¹	
	1999	2000	1999	2000	1999	2000
	<i>Million Eggs</i>	<i>Million Eggs</i>	<i>Million Eggs</i>	<i>Million Eggs</i>	<i>Million Eggs</i>	<i>Million Eggs</i>
AL	203	192	77	59	126	133
AR	286	292	101	110	185	182
CA	532	501				
CO	73	84				
CT	64	67				
FL	214	209	202	197	12	12
GA	417	402	232	230	185	172
HI	12.5	11.8	12.5	11.8	0	0
IL	74	75	70	71	4	4
IN	489	502	477	490	12	12
IA	548	622				
ME	105	90				
MD	71	62	65	56	6	6
MI	117	131				
MN	259	273	249	263	10	10
MS	125	131	33	41	92	90
MO	141	136				
NE	235	238	235	238	0	0
NY	81	90				
NC	210	202	77	76	133	126
OH	681	662				
OK	80	77	44	44	36	33
OR	63	63	62	62	1	1
PA	489	497	472	477	17	20
SC	107	101	89	83	18	18
SD	49	49	49	49	0	0
TX	365	348				
VA	73	67	35	30	38	37
WA	105	110				
WI	83	88				
30 Sts	6,353	6,373	5,345	5,387	1,008	986
Oth Sts ²	389	428	307	333	82	95
US	6,742	6,801	5,652	5,720	1,090	1,081

¹ Data by type of flock not shown for some States to avoid disclosing individual operations.

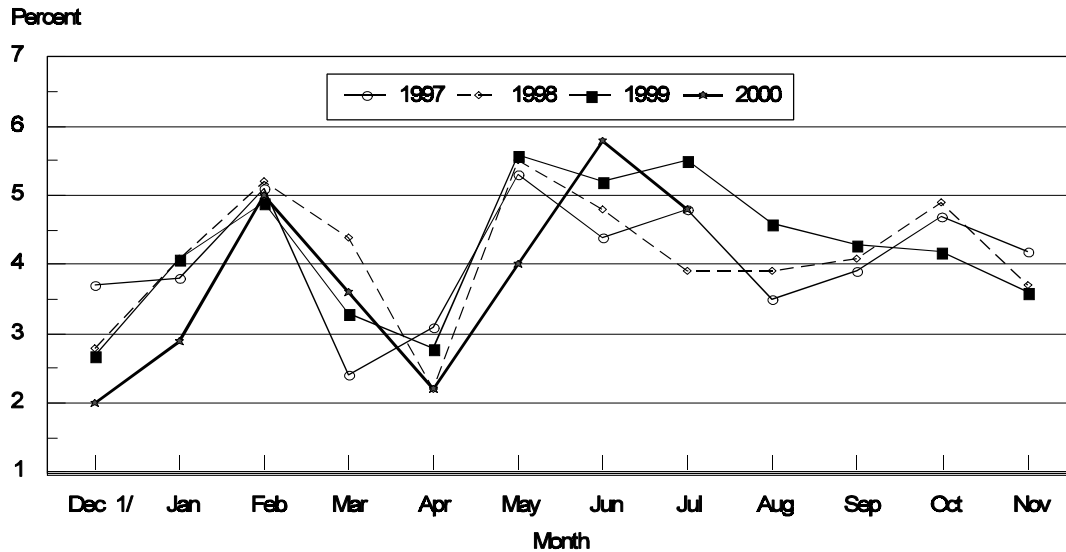
² Estimates for individual States are not available.

**Forced Molt: Percent of All Layers by Month,
United States, 1999-00 ¹**

Month	Percent Being Molted		Percent with Molt Completed	
	1999	2000	1999	2000
	<i>Percent</i>	<i>Percent</i>	<i>Percent</i>	<i>Percent</i>
Jan	4.1	2.9	22.5	22.9
Feb	4.9	5.0	22.1	21.4
Mar	3.3	3.7	21.8	22.1
Apr	2.8	2.2	21.7	22.5
May	5.6	4.0	21.7	22.3
Jun	5.2	5.8	21.9	20.4
Jul	5.5	4.8	22.1	21.9
Aug	4.6		23.0	
Sep	4.3		22.2	
Oct	4.2		22.8	
Nov	3.6		23.1	
Dec	2.0		24.4	

¹ As of first of month.

**All Layers : United States
Percent Being Molted, 1997 - 2000
First of Month**



1/ Previous Year

**Forced Molt: Percent of All Layers by State
and United States, July 1999-00 ¹**

State	Percent Being Molted		Percent with Molt Completed	
	1999	2000	1999	2000
	<i>Percent</i>	<i>Percent</i>	<i>Percent</i>	<i>Percent</i>
AL	3.0	2.0	13.0	9.0
AR	3.0	1.5	10.0	7.5
CA	11.0	9.0	43.0	36.5
CO	5.0	0.0	25.5	21.5
CT	3.5	3.0	6.0	13.0
FL	8.5	7.5	39.5	34.0
GA	6.0	5.0	16.5	16.5
HI	7.5	12.5	47.5	49.0
IL	1.5	22.0	26.0	21.5
IN	3.5	2.0	28.0	28.0
IA	7.5	4.5	27.0	28.5
ME	0.0	0.0	0.0	0.0
MD	10.5	2.0	39.0	35.0
MI	10.0	4.5	27.0	26.5
MN	4.5	2.5	33.5	34.5
MS	2.5	4.0	11.0	12.5
MO	15.0	2.0	16.0	17.0
NE	8.0	10.0	23.0	19.5
NY	0.0	0.5	4.0	6.5
NC	3.5	2.0	9.5	9.5
OH	2.0	6.5	14.5	15.5
OK	3.0	1.0	5.5	9.0
OR	4.5	4.0	33.0	36.0
PA	7.5	4.5	16.5	19.0
SC	6.0	6.5	19.0	36.0
SD	7.5	2.0	26.5	27.0
TX	3.0	2.5	25.0	19.5
VA	0.5	6.5	6.5	13.0
WA	6.0	6.0	46.5	42.0
WI	2.0	7.0	24.5	25.0
30 Sts	5.5	4.7	22.3	21.8
Oth Sts ²	6.2	6.3	18.2	22.8
US	5.5	4.8	22.1	21.9

¹ As of first of month.

² Estimates for individual States are not available.

**Hatchery Production: Eggs in Incubators, Chicks Hatched,
and Placements by Type, United States, June-July 1999-00**

Item	1999	2000	2000 as % of 1999
	<i>1,000</i>	<i>1,000</i>	<i>Percent</i>
Egg-Type			
Eggs in Incubators on Jul 1	30,663	30,611	100
Chicks Hatched During Jun	41,474	36,575	88
Chicks Hatched Jan thru Jun	236,931	223,251	94
Pullets Hatched During Jun for Intended Placements in Hatchery Supply Flocks	187	223	119
7-18 Month Earlier ¹	3,132	2,945	94
Broiler-Type			
Eggs in Incubators on Jul 1	629,384	615,421	98
Chicks Hatched During Jun	744,372	748,008	100
Chicks Hatched Jan thru Jun	4,399,704	4,473,398	102
Pullets Hatched During Jun for Intended Placements in Hatchery Supply Flocks	7,041	6,829	97
7-15 Months Earlier ²	62,877	64,827	103

¹ 2000 includes pullet chicks hatched Dec 1998 through Nov 1999.

² 2000 includes pullet chicks hatched Mar 1999 through Nov 1999.

**Egg-Type Eggs in Incubators: By Region and United States,
July 1, 1999-00**

Geographic Division	1999	2000	2000 as % of 1999
	<i>1,000</i>	<i>1,000</i>	<i>Percent</i>
North Atlantic	5,117	5,129	100
E North Central	7,626	6,516	85
W North Central	6,117	7,044	115
South Atlantic	3,052	2,977	98
South Central	4,336	4,190	97
West	4,415	4,755	108
US	30,663	30,611	100

Regional Listing:

North Atlantic = CT, ME, MA, NH, NJ, NY, PA, RI, VT.

E North Central = IL, IN, MI, OH, WI.

W North Central = IA, KS, MN, MO, NE, ND, SD.

South Atlantic = DE, FL, GA, MD, NC, SC, VA, WV.

South Central = AL, AR, KY, LA, MS, OK, TN, TX.

West = AK, AZ, CA, CO, HI, ID, MT, NM, NV, OR, UT, WA, WY.

**Egg-Type Chicks Hatched: By State and United States,
June 1999-00**

State	June			Jan-Jun		
	1999	2000	2000 as % of 1999	1999	2000	2000 as % of 1999
	<i>1,000</i>	<i>1,000</i>	<i>Percent</i>	<i>1,000</i>	<i>1,000</i>	<i>Percent</i>
AR	809	817	101	4,894	4,495	92
FL	1,005	971	97	6,502	6,139	94
GA	1,718	1,916	112	12,069	11,630	96
IN	7,945	6,310	79	45,046	37,147	82
IA	5,635	6,245	111	30,810	33,820	110
KS	320	132	41	2,018	1,638	81
MN	1,763	2,101	119	11,677	11,138	95
MO	360	360	100	2,163	2,163	100
PA	5,954	4,907	82	34,272	31,362	92
Oth Sts ¹	15,965	12,816	80	87,480	83,719	96
US	41,474	36,575	88	236,931	223,251	94

¹ Not published separately to avoid disclosing data for individual operations.

Egg-Type Chicks Hatched: By Month, United States, 1998-00

Month	By Months				Cumulative			
	1998	1999	2000	2000 as % of 1999	1998	1999	2000	2000 as % of 1999
	<i>1,000</i>	<i>1,000</i>	<i>1,000</i>	<i>Percent</i>	<i>1,000</i>	<i>1,000</i>	<i>1,000</i>	<i>Percent</i>
Jan	37,168	35,242	34,125	97	37,168	35,242	34,125	97
Feb	34,597	36,367	35,491	98	71,765	71,609	69,616	97
Mar	40,604	41,172	39,560	96	112,369	112,781	109,176	97
Apr	39,057	41,950	36,621	87	151,426	154,731	145,797	94
May	39,206	40,726	40,879	100	190,632	195,457	186,676	96
Jun	39,323	41,474	36,575	88	229,955	236,931	223,251	94
Jul	35,576	34,275			265,531	271,206		
Aug	33,398	35,454			298,929	306,660		
Sep	37,959	39,287			336,888	345,947		
Oct	34,667	39,044			371,555	384,991		
Nov	31,217	32,892			402,772	417,883		
Dec	35,501	33,045			438,273	450,928		

**Intended Placements: Egg-Type Pullet Chicks for Hatchery Supply
Flocks by Month and Total, United States, 1998-00 ¹**

Month	Pullet Chicks Hatched			2000 as % of 1999	Cumulative Potential Placements Relative to Current Supply Flocks 7-18 Months Earlier ²		
	1998	1999	2000		1999	2000	2001
	<i>1,000</i>	<i>1,000</i>	<i>1,000</i>	<i>Percent</i>	<i>1,000</i>	<i>1,000</i>	<i>1,000</i>
Jan	189	166	212	128	3,029	3,012	3,114
Feb	250	267	251	94	3,120	2,945	
Mar	225	257	286	111	3,020	3,078	
Apr	333	287	309	108	2,942	2,981	
May	192	283	343	121	3,044	2,900	
Jun	354	187	223	119	3,132	2,945	
Jul	298	231			3,108	2,937	
Aug	185	318			3,085	2,983	
Sep	324	227			3,102	2,967	
Oct	358	277			3,134	2,996	
Nov	217	262			3,088	3,018	
Dec	183	175			3,179	3,078	
Total	3,108	2,937					

¹ Reported by leading breeders. Coverage may not be 100 percent. Includes expected pullet chicks from eggs sold during the preceding month at the rate of 125 pullet chicks per 30 dozen case of eggs.

² For June 2000, includes breeder pullet chicks hatched Dec 1998 through Nov 1999. The 7-18 months represent the first laying cycle. Molting and additional laying cycles will increase the cumulative potential placements.

**Broiler-Type Eggs in Incubators: By Region
and United States, July 1, 1999-00**

Geographic Division	1999	2000	2000 as % of 1999
	<i>1,000</i>	<i>1,000</i>	<i>Percent</i>
North Atlantic	12,249	11,326	92
E North Central	9,023	7,775	86
W North Central	21,951	19,152	87
South Atlantic	237,897	233,125	98
South Central	323,327	319,823	99
West	24,937	24,220	97
US	629,384	615,421	98

**Broiler-Type Chicks Hatched: By State
and United States, June 1999-00**

State	June			Jan-Jun		
	1999	2000	2000 as % of 1999	1999	2000	2000 as % of 1999
	<i>1,000</i>	<i>1,000</i>	<i>Percent</i>	<i>1,000</i>	<i>1,000</i>	<i>Percent</i>
AL	97,444	102,965	106	574,587	615,678	107
AR	109,452	110,234	101	645,007	652,693	101
DE	15,875	15,445	97	94,781	92,010	97
FL	9,476	9,896	104	58,655	58,064	99
GA	111,540	111,499	100	663,209	667,293	101
MD	31,324	29,911	95	185,750	182,573	98
MS	64,815	66,609	103	385,312	391,553	102
NC	64,924	64,152	99	377,866	379,964	101
PA	12,790	12,861	101	76,940	77,332	101
SC	16,722	16,670	100	97,394	100,185	103
TX	47,689	50,823	107	287,951	312,041	108
VA	24,016	24,335	101	143,078	143,078	100
CA TN & WV	40,502	40,333	100	239,112	241,551	101
15 Sts ¹	646,569	655,733	101	3,829,642	3,914,015	102
Oth Sts ²	97,803	92,275	94	570,062	559,383	98
US	744,372	748,008	100	4,399,704	4,473,398	102

¹ States in the weekly hatchery production estimating program.

² Not published separately to avoid disclosing data for individual operations.

Broiler Chicks Hatched: By Month, United States, 1998-00

Month	By Months				Cumulative			
	1998	1999	2000	2000 as % of 1999	1998	1999	2000	2000 as % of 1999
	<i>1,000</i>	<i>1,000</i>	<i>1,000</i>	<i>Percent</i>	<i>1,000</i>	<i>1,000</i>	<i>1,000</i>	<i>Percent</i>
Jan	711,373	735,768	749,375	102	711,373	735,768	749,375	102
Feb	645,180	662,604	700,967	106	1,356,553	1,398,372	1,450,342	104
Mar	730,316	755,804	756,351	100	2,086,869	2,154,176	2,206,693	102
Apr	708,260	734,734	743,516	101	2,795,129	2,888,910	2,950,209	102
May	739,319	766,422	775,181	101	3,534,448	3,655,332	3,725,390	102
Jun	717,967	744,372	748,008	100	4,252,415	4,399,704	4,473,398	102
Jul	722,715	751,627			4,975,130	5,151,331		
Aug	715,650	741,716			5,690,780	5,893,047		
Sep	695,281	700,016			6,386,061	6,593,063		
Oct	693,204	697,434			7,079,265	7,290,497		
Nov	674,851	676,769			7,754,116	7,967,266		
Dec	737,822	748,438			8,491,938	8,715,704		

**Intended Placements: Broiler-Type Pullet Chicks for Hatchery
Supply Flocks by Month and Total, 1998-00 ¹**

Month	Pullet Chicks Hatched			2000 as % of 1999	Cumulative Potential Placements Relative to Current Supply Flocks 7-15 Months Earlier ²		
	1998	1999	2000		1999	2000	2001
	<i>1,000</i>	<i>1,000</i>	<i>1,000</i>	<i>Percent</i>	<i>1,000</i>	<i>1,000</i>	<i>1,000</i>
US Place- ments							
Jan	6,765	7,059	6,861	97	59,403	64,139	63,298
Feb	6,328	6,882	7,001	102	59,937	64,344	
Mar	6,776	7,284	7,310	100	60,699	64,697	
Apr	6,687	7,038	6,764	96	61,775	64,663	
May	7,062	7,736	7,435	96	61,893	64,725	
Jun	6,932	7,041	6,829	97	62,877	64,827	
Jul	6,788	7,088			63,005	64,536	
Aug	7,109	7,665			63,377	64,359	
Sep	7,328	6,870			63,197	63,624	
Oct	6,883	7,121			63,549	63,893	
Nov	7,312	6,984			63,799	63,569	
Dec	6,904	6,993			64,426	63,339	
Annual Total	82,874	85,761					
Total Place- ments ³							
Jan	8,613	8,679	8,069	93			
Feb	8,273	8,473	8,302	98			
Mar	8,760	8,863	8,798	99			
Apr	8,300	8,572	8,522	99			
May	8,957	9,463	8,917	94			
Jun	8,757	8,333	8,201	98			
Jul	8,423	8,342					
Aug	8,686	8,983					
Sep	8,985	8,044					
Oct	8,756	8,223					
Nov	9,412	8,220					
Dec	8,830	8,299					
Annual Total	104,752	102,494					

¹ Reported by leading breeders. Coverage may not be 100 percent. Includes expected pullet chicks from eggs sold during the preceding month at the rate of 125 pullet chicks per 30 dozen case of eggs.

² For Jun 2000, includes breeder pullet chicks hatched Mar 1999 through Nov 1999.

³ U.S. production of intended placements worldwide.

Procedures and Reliability

Data Sources: Primary data for the "**Chickens and Eggs**" report are from weekly and/or monthly questionnaires sent to producers. An attempt is made to collect information for layer and egg estimates from each known contractor and independent producer who has over 30,000 table egg layers. Coverage for operations with less than 30,000 table egg layers are estimated each month based on data reported in December. Approximately 900 contractors, independent egg producers, and started pullet operations are contacted each month. All known hatcheries, approximately 330, are contacted for information on a weekly and/or monthly basis.

Revisions: The previous month's estimates are subject to revision if late reports or corrected data indicates a different level. Additionally, revisions needed after the monthly report will be made at the end of the marketing year and published in the annual summaries of "**Chickens and Eggs Summary**" and "**Hatchery Production**".

Procedures and Reliability: Operations are mailed a questionnaire and given adequate time to respond by mail. Those that do not respond are phoned. Great care is exercised to ensure that all operations are accounted for during each survey period. However, there are usually missing reports that must be accounted for in the estimates.

Sound statistical methodology is employed to derive estimates from the reported data. All data are checked for unusual values. All operations' data are compared to their own past operating profiles and also to trends from other operations. Data for missing operations are estimated based on similar operations or historical data. Survey data are subject to non-sampling errors such as omissions and mistakes in reporting and in processing. While these errors cannot be measured directly, they are minimized by reviewing all data for consistency and reasonableness.

Egg-type chicks hatched are comprised of all chicks of egg-type domesticated breeds including males and chicks destined for hatchery supply flocks and research purposes. The relationship of chicks hatched to chicken inventory and poultry marketings is carefully monitored. The disposition of egg-type chicks hatched prior to placement into the laying flock can vary significantly, which can make comparisons to changes in layer inventory inconsistent over time.

Intended placement data reported by leading breeders include pullet chicks expected from eggs sold the preceding month. The breeders in this report account for a large percentage of replacement pullets for hatchery supply flocks. Production of replacement pullets by these breeders indicates the number of pullets available to hatchery egg supply flocks several months before the pullets will actually move into the flocks. Beginning with the January 1996 publication the broiler-type cumulative potential placements went from 7-14 months earlier to 7-15 months earlier. The egg-type cumulative potential placements of 7-18 months represent the first laying cycle. Molting and additional laying cycles will increase the cumulative potential placements of egg-type hatching flocks.

The next "Chickens and Eggs" report will be released at 3 p.m. ET on August 22, 2000.

The United States Department of Agriculture (USDA) prohibits discrimination in all its programs on the basis of race, color, national origin, gender, religion, age, disability, political beliefs, sexual orientation, and marital or family status. (Not all prohibited bases apply to all programs.) Persons with disabilities who require alternative means for communication of program information (braille, large print, audiotape, etc.) should contact the USDA's TARGET Center at 202-720-2600 (voice and TDD).

To file a complaint of discrimination, write USDA, Director, Office of Civil Rights, Room 326-W, Whitten Building, 14th and Independence Avenue, SW, Washington, D.C., 20250-9410, or call 202-720-5964 (voice or TDD). USDA is an equal opportunity provider and employer.

ACCESS TO REPORTS!!

For your convenience, there are several ways to obtain NASS reports, data products, and services:

INTERNET ACCESS

All NASS reports are available free of charge on the worldwide Internet. For access, connect to the Internet and go to the NASS Home Page at: <http://www.usda.gov/nass/>. Select "Today's Reports" or Publications and then Reports by Calendar or Publications and then Search, by Title or Subject.

E-MAIL SUBSCRIPTION

There are two options for subscribing via e-mail. All NASS reports are available by subscription free of charge direct to your e-mail address. 1) Starting with the NASS Home Page at <http://www.usda.gov/nass/>, click on **Publications**, then click on the **Subscribe by E-mail** button which takes you to the page describing e-mail delivery of reports. Finally, click on **Go to the Subscription Page** and follow the instructions. 2) If you do NOT have Internet access, send an e-mail message to: usda-reports@usda.mannlib.cornell.edu. In the body of the message type the word: **list**.

AUTOFAX ACCESS

NASSFax service is available for some reports from your fax machine. Please call 202-720-2000, using the handset attached to your fax. Respond to the voice prompts. Document 0411 is a list of available reports.

----- PRINTED REPORTS OR DATA PRODUCTS

CALL OUR TOLL-FREE ORDER DESK: 800-999-6779 (U.S. and Canada)
Other areas, please call 703-834-0125 FAX: 703-834-0110
(Visa, MasterCard, check, or money order acceptable for payment.)

ASSISTANCE

For **assistance** with general agricultural statistics or further information about NASS or its products or services, contact the **Agricultural Statistics Hotline** at **800-727-9540**, 7:30 a.m. to 4:00 p.m. ET, or e-mail: nass@nass.usda.gov.