

Chickens and Eggs

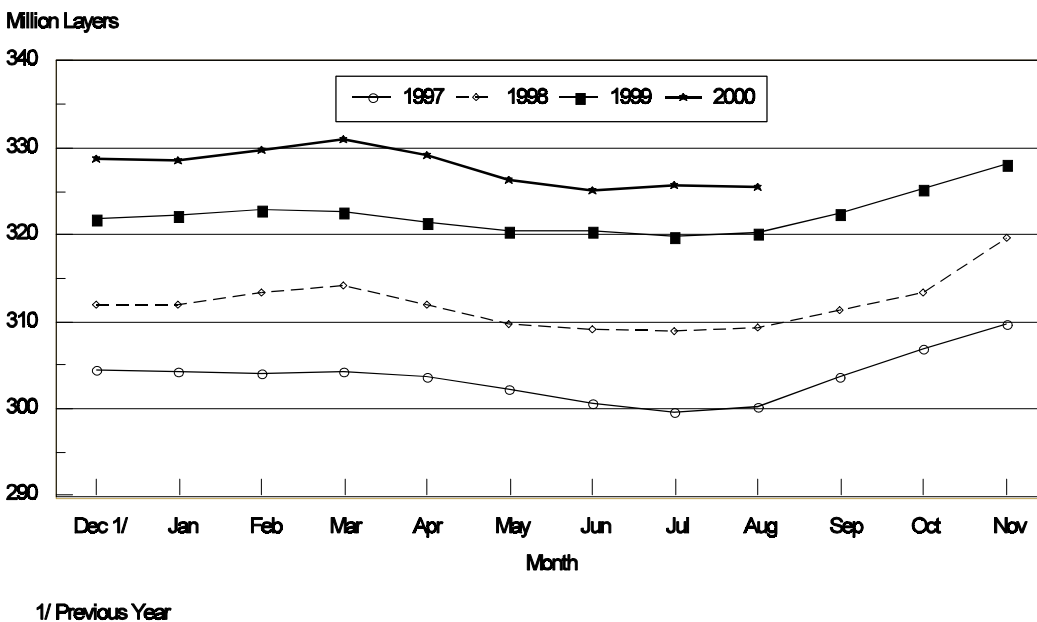
Released September 22, 2000, by the National Agricultural Statistics Service (NASS), Agricultural Statistics Board, U.S. Department of Agriculture. For information on Chickens and Eggs call Tom Kruchten at (202) 690-4870. For information on Hatch call Jody Roberts at (202) 690-8632, office hours 7:30 a.m. to 4:00 p.m. ET.

August Egg Production Up 2 Percent

U.S. egg production totaled 7.10 billion during August 2000, up 2 percent from the 6.97 billion produced in 1999. Production included 6.01 billion table eggs and 1.09 billion hatching eggs, of which 1.03 billion were broiler-type and 65.0 million were egg-type. The total number of layers during August 2000 averaged 325 million, up 2 percent from the total average number of layers during August 1999. August egg production per 100 layers was 2,181 eggs, up slightly from 2,177 eggs in August 1999.

August 2000 contained 23 weekdays and four Saturdays, compared to 22 weekdays and four Saturdays in August 1999.

Average Number of All Layers United States, 1997 - 2000



All layers in the U.S. on September 1, 2000, totaled 325 million, up 1 percent from a year ago. The 325 million layers consisted of 268 million layers producing table or commercial type eggs, 54.3 million layers producing broiler-type hatching eggs, and 2.81 million layers producing egg-type hatching eggs. Rate of lay per day on September 1, 2000, averaged 70.2 eggs per 100 layers, down 1 percent from the 70.9 a year ago.

Laying flocks in the 30 major egg producing States produced 6.66 billion eggs during August, up 2 percent from August 1999. The average number of layers during August, at 305 million, was up 1 percent from a year earlier.

Individual State estimates are available for the 30 major egg producing States. These States are listed on page 8 of this release and account for approximately 94 percent of the total U.S. egg production. Production for the other States are grouped into an "Other States" category and combined with the 30 States published individually to obtain a U.S. estimate. Individual State estimates' for "Other States" are available annually in the "**Chickens and Eggs Summary**" report.

Egg-Type Chicks Hatched Down 3 Percent

Egg-type chicks **hatched** during August totaled 34.3 million, down 3 percent from August 1999. **Eggs in incubators** totaled 34 million on September 1, 2000, down 2 percent from a year ago.

Domestic placements of **egg-type pullet chicks for future hatchery supply flocks** by leading breeders totaled 275,000 during August 2000, down 14 percent from August 1999.

Broiler Hatch Down Slightly

The August 2000 **hatch** of broiler-type chicks, at 740 million, was down slightly from August of the previous year. There were 614 million **eggs in incubators** on September 1, 2000, down 1 percent from a year earlier.

Leading breeders placed 7.29 million **broiler-type pullet chicks for future domestic hatchery supply flocks** during August 2000, down 5 percent from August 1999.

**All Layers: Average Number on Hand During the Month,
United States, 1997-00**

Month	1997	1998	1999	2000
	<i>1,000 Layers</i>	<i>1,000 Layers</i>	<i>1,000 Layers</i>	<i>1,000 Layers</i>
Dec ¹	304,463	311,898	321,960	328,824
Jan	304,289	311,906	322,326	328,557
Feb	304,000	313,285	322,797	329,824
Mar	304,285	314,141	322,758	330,927
Apr	303,618	311,957	321,515	329,243
May	302,241	309,655	320,498	326,426
Jun	300,537	309,206	320,441	325,150
Jul	299,605	308,967	319,811	325,678
Aug	300,211	309,291	320,173	325,485
Sep	303,661	311,358	322,394	
Oct	306,807	315,222	325,272	
Nov	309,670	319,625	328,253	

¹ December preceding year.

**Eggs: Production During the Month by Type,
United States, 1999-00**

Month	Total Eggs		Table Eggs		Hatching Eggs	
	1999	2000	1999	2000	1999	2000
	<i>Million Eggs</i>	<i>Million Eggs</i>	<i>Million Eggs</i>	<i>Million Eggs</i>	<i>Million Eggs</i>	<i>Million Eggs</i>
Dec ¹	7,051	7,279	5,979	6,198	1,072	1,081
Jan	6,979	7,155	5,898	6,068	1,081	1,087
Feb	6,281	6,659	5,295	5,632	986	1,027
Mar	7,052	7,235	5,943	6,111	1,109	1,124
Apr	6,784	7,013	5,708	5,911	1,076	1,102
May	6,941	7,105	5,824	5,971	1,117	1,134
Jun	6,742	6,804	5,652	5,724	1,090	1,080
Jul	6,903	7,063	5,797	5,953	1,106	1,110
Aug	6,971	7,100	5,876	6,010	1,095	1,090
Sep	6,860		5,797		1,063	
Oct	7,131		6,039		1,092	
Nov	7,016		5,967		1,049	
During Year	82,711	63,413	69,775	53,578	12,936	9,835

¹ December preceding year.

**Layers and Eggs: Layers on Hand and Eggs Produced by Type,
and Forced Molt, United States, July-August 1999-00**

Item	Unit	1999	2000	2000 as % of 1999
Layers During Jul	1,000			
All Layers		319,811	325,678	102
Table Egg Type		260,259	266,593	102
Hatching Egg Type		59,552	59,085	99
Broiler-Type Hatching		56,742	56,333	99
Egg-Type Hatching		2,810	2,752	98
Eggs per 100 Layers During Jul	Number			
All Layers		2,158	2,169	101
Table Egg Type		2,227	2,233	100
Hatching Egg Type		1,857	1,879	101
Broiler-Type Hatching		1,831	1,855	101
Egg-Type Hatching		2,384	2,362	99
Eggs Produced During Jul	Million			
All Layers		6,903	7,063	102
Table Egg Type		5,797	5,953	103
Hatching Egg Type		1,106	1,110	100
Broiler-Type Hatching		1,039	1,045	101
Egg-Type Hatching		67	65	97
Layers on Aug 1	1,000			
All Layers		318,944	326,265	102
Table Egg Type		259,992	267,258	103
Hatching Egg Type		58,952	59,007	100
Broiler-Type Hatching		56,149	56,241	100
Egg-Type Hatching		2,803	2,766	99
Eggs per 100 Layers on Aug 1	Number			
All Layers		69.2	70.1	101
Table Egg Type		71.4	72.3	101
Hatching Egg Type		59.4	60.2	101
Broiler-Type Hatching		58.5	59.4	102
Egg-Type Hatching		76.0	75.9	100
Forced Molt Layers on Aug 1	Percent			
Percent Being Molting		4.6	4.3	93
Percent with Molt Completed		23.0	21.8	95
Layers Sold for Slaughter During Jul	1,000	18,080	16,003	89
Layers Rendered, Died, Destroyed, Composted or Disappeared For Any Reason During Jul	1,000	5,376	4,105	76
Pullets Less Than 20 Weeks of Age, Aug 1	1,000	99,815	99,404	100
Pullets Added During Jul ¹	1,000	22,724	22,940	101

¹ Pullet chicks one day old added to pullet flocks.

**Layers and Eggs: Layers on Hand and Eggs Produced by Type,
and Forced Molt, United States, August-September 1999-00**

Item	Unit	1999 ¹	2000	2000 as % of 1999
Layers During Aug	1,000			
All Layers		320,173	325,485	102
Table Egg Type		261,436	267,416	102
Hatching Egg Type		58,737	58,069	99
Broiler-Type Hatching		55,987	55,280	99
Egg-Type Hatching		2,750	2,789	101
Eggs per 100 Layers During Aug	Number			
All Layers		2,177	2,181	100
Table Egg Type		2,248	2,247	100
Hatching Egg Type		1,864	1,877	101
Broiler-Type Hatching		1,840	1,854	101
Egg-Type Hatching		2,364	2,331	99
Eggs Produced During Aug	Million			
All Layers		6,971	7,100	102
Table Egg Type		5,876	6,010	102
Hatching Egg Type		1,095	1,090	100
Broiler-Type Hatching		1,030	1,025	100
Egg-Type Hatching		65	65	100
Layers on Sep 1	1,000			
All Layers		321,349	324,653	101
Table Egg Type		262,853	267,545	102
Hatching Egg Type		58,496	57,108	98
Broiler-Type Hatching		55,813	54,303	97
Egg-Type Hatching		2,683	2,805	105
Eggs per 100 Layers on Sep 1	Number			
All Layers		70.9	70.2	99
Table Egg Type		73.2	72.2	99
Hatching Egg Type		60.4	60.6	100
Broiler-Type Hatching		59.6	59.9	101
Egg-Type Hatching		76.4	75.1	98
Forced Molt Layers, Sep 1	Percent			
Percent Being Molting		4.3	4.6	107
Percent with Molt Completed		22.2	22.6	102
Layers Sold for Slaughter During Aug	1,000	16,934	17,291	102
Layers Rendered, Died, Destroyed. Composted or Disappeared For Any Reason During Aug	1,000	4,486	4,065	91
Pullets Less Than 20 Weeks of Age, Sep 1	1,000	98,566	97,861	99
Pullets Added During Aug ²	1,000	23,880	21,913	92

¹ Revised.

² Pullet chicks one day old added to pullet flocks.

**Layers and Eggs: Layers on Hand and Eggs Produced by Type, and Forced
Molt, 30 Selected States, July-August, 1999-00 ¹**

Item	Unit	1999	2000	2000 as % of 1999
Layers During Jul	1,000			
All Layers		300,958	305,682	102
Table Egg Type		245,954	251,501	102
Hatching Egg Type		55,004	54,181	99
Broiler-Type Hatching		52,313	51,521	98
Egg-Type Hatching		2,691	2,660	99
Eggs per 100 Layers During Jul	Number			
All Layers		2,158	2,167	100
Table Egg Type		2,225	2,233	100
Hatching Egg Type		1,860	1,862	100
Broiler-Type Hatching		1,833	1,836	100
Egg-Type Hatching		2,378	2,368	100
Eggs Produced During Jul	Million			
All Layers		6,495	6,624	102
Table Egg Type		5,472	5,615	103
Hatching Egg Type		1,023	1,009	99
Broiler-Type Hatching		959	946	99
Egg-Type Hatching		64	63	98
Layers on Aug 1	1,000			
All Layers		299,880	306,188	102
Table Egg Type		245,506	252,136	103
Hatching Egg Type		54,374	54,052	99
Broiler-Type Hatching		51,688	51,371	99
Egg-Type Hatching		2,686	2,681	100
Eggs per 100 Layers on Aug 1	Number			
All Layers		69.1	70.2	102
Table Egg Type		71.3	72.4	102
Hatching Egg Type		59.5	59.7	100
Broiler-Type Hatching		58.6	58.9	101
Egg-Type Hatching		75.8	75.7	100
Forced Molt Layers on Aug 1	Percent			
Percent Being Molted		4.7	4.2	89
Percent with Molt Completed		23.2	21.7	94
Layers Sold for Slaughter During Jul	1,000	17,545	14,857	85
Layers Rendered, Died, Destroyed, Composted or Disappeared For Any Reason During Jul	1,000	5,106	3,930	77
Pullets Less Than 20 Weeks of Age, Aug 1	1,000	94,115	93,429	99
Pullets Added During Jul ²	1,000	21,936	21,544	98

¹ The 30 States are listed in the table on page 8.

² Pullet chicks one day old added to pullet flocks.

**Layers and Eggs: Layers on Hand and Eggs Produced by Type, and Forced
Molt, 30 Selected States, August-September, 1999-00 ¹**

Item	Unit	1999 ²	2000	2000 as % of 1999
Layers During Aug	1,000			
All Layers		301,048	305,373	101
Table Egg Type		246,872	252,069	102
Hatching Egg Type		54,176	53,304	98
Broiler-Type Hatching		51,535	50,615	98
Egg-Type Hatching		2,641	2,689	102
Eggs per 100 Layers During Aug	1,000			
All Layers		2,175	2,181	100
Table Egg Type		2,244	2,249	100
Hatching Egg Type		1,864	1,861	100
Broiler-Type Hatching		1,840	1,835	100
Egg-Type Hatching		2,348	2,343	100
Eggs Produced During Aug	Million			
All Layers		6,549	6,661	102
Table Egg Type		5,539	5,669	102
Hatching Egg Type		1,010	992	98
Broiler-Type Hatching		948	929	98
Egg-Type Hatching		62	63	102
Layers on Sep 1	1,000			
All Layers		302,175	304,524	101
Table Egg Type		248,219	251,985	102
Hatching Egg Type		53,956	52,539	97
Broiler-Type Hatching		51,373	49,847	97
Egg-Type Hatching		2,583	2,692	104
Eggs per 100 Layers on Sep 1	Number			
All Layers		71.1	70.3	99
Table Egg Type		73.5	72.5	99
Hatching Egg Type		60.3	60.0	100
Broiler-Type Hatching		59.5	59.2	99
Egg-Type Hatching		76.2	75.0	98
Forced Molt Layers, Sep 1	Percent			
Percent Being Molted		4.5	4.6	102
Percent with Molt Completed		22.3	22.4	100
Layers Sold for Slaughter During Aug	1,000	15,907	16,307	103
Layers Rendered, Died, Destroyed, Composted or Disappeared For Any Reason During Aug	1,000	4,300	3,874	90
Pullets Less Than 20 Weeks of Age, Sep 1	1,000	92,784	91,878	99
Pullets Added During Aug ³	1,000	22,360	20,714	93

¹ The 30 States are listed in the table on page 8.

² Revised.

³ Pullet chicks one day old added to pullet flocks.

**Layers and Eggs: Layers on Hand and Eggs Produced by State
and United States, During July 1999-00**

State	Table Egg Layers in Flocks 30,000 and Above		All Layers ¹		Eggs per 100 for All Layers ¹	
	1999	2000	1999	2000	1999	2000
	<i>1,000</i>	<i>1,000</i>	<i>1,000</i>	<i>1,000</i>	<i>Number</i>	<i>Number</i>
AL	3,499	2,881	10,749	10,563	1,926	1,893
AR	4,967	4,956	15,466	15,162	1,920	1,972
CA	23,979	23,035	24,672	23,661	2,197	2,210
CO	2,908	3,206	3,448	3,632	2,175	2,313
CT	2,801	3,088	2,982	3,222	2,314	2,328
FL	9,621	9,523	10,347	10,165	2,146	2,174
GA	11,032	11,887	20,742	20,986	2,044	2,035
HI	575	580	604	603	2,020	2,023
IL	2,839	3,376	3,080	3,655	2,338	2,161
IN	21,248	21,884	21,989	22,567	2,274	2,282
IA	24,952	26,831	25,935	27,634	2,155	2,294
ME	4,424	4,243	4,537	4,314	2,336	2,012
MD	2,760	2,614	3,127	3,003	2,175	1,998
MI	5,582	6,100	5,863	6,379	2,219	2,228
MN	11,590	11,903	12,270	12,621	2,184	2,179
MS	1,560	1,713	6,686	6,606	1,944	2,013
MO	4,744	4,918	6,094	6,188	2,199	2,262
NE	11,104	11,921	11,254	12,071	2,133	2,063
NY	3,267	3,722	3,514	3,919	2,362	2,424
NC	3,508	3,160	11,236	10,980	1,913	1,867
OH	29,749	30,494	30,448	31,178	2,246	2,268
OK	1,975	1,956	4,111	4,040	1,946	1,955
OR	2,681	2,736	2,846	2,908	2,319	2,235
PA	21,086	21,517	22,462	23,061	2,239	2,294
SC	3,920	4,193	4,968	5,177	2,134	2,028
SD	1,940	1,938	2,190	2,198	2,329	2,229
TX	13,052	12,216	17,071	16,426	2,185	2,161
VA	1,572	1,503	3,674	3,465	2,096	2,020
WA	4,606	4,792	4,726	4,912	2,336	2,329
WI	3,378	3,738	3,867	4,386	2,353	2,189
30 Sts	240,919	246,624	300,958	305,682	2,158	2,167
Oth Sts ²	13,259	14,061	18,853	19,996	2,164	2,195
US	254,178	260,685	319,811	325,678	2,158	2,169

¹ Includes all layers and eggs produced in both table egg and hatching egg flocks regardless of size.

² Estimates for individual States are not available.

**Layers and Eggs: Layers on Hand and Eggs Produced by State
and United States, During August 1999-00**

State	Table Egg Layers in Flocks 30,000 and Above		All Layers ¹		Eggs per 100 for All Layers ¹	
	1999	2000	1999	2000	1999	2000
	<i>1,000</i>	<i>1,000</i>	<i>1,000</i>	<i>1,000</i>	<i>Number</i>	<i>Number</i>
AL	3,472	2,935	10,769	10,466	1,904	1,911
AR	4,954	5,194	15,173	15,218	1,931	1,945
CA	24,148	23,036	24,845	23,624	2,198	2,243
CO	3,036	3,010	3,568	3,441	2,186	2,296
CT	2,822	3,075	3,003	3,209	2,298	2,400
FL	9,763	9,683	10,507	10,327	2,160	2,227
GA	11,006	11,743	20,386	20,730	2,046	2,055
HI	577	582	606	607	1,964	1,977
IL	3,087	3,259	3,345	3,531	2,242	2,266
IN	21,141	21,769	21,885	22,477	2,262	2,247
IA	25,156	26,612	26,114	27,394	2,240	2,282
ME	4,511	4,216	4,627	4,281	2,421	1,979
MD	2,528	2,549	2,862	2,875	2,236	2,157
MI	5,548	5,892	5,827	6,168	2,351	2,221
MN	11,708	11,878	12,384	12,593	2,188	2,208
MS	1,660	1,779	6,762	6,607	1,937	1,968
MO	4,844	4,818	6,219	6,111	2,187	2,356
NE	11,143	11,940	11,293	12,048	2,116	2,158
NY	3,346	3,776	3,599	3,978	2,362	2,413
NC	3,470	3,301	11,058	10,872	1,926	1,858
OH	30,004	30,434	30,673	31,104	2,269	2,276
OK	1,996	1,961	4,055	4,012	2,022	1,969
OR	2,682	2,782	2,837	2,956	2,217	2,267
PA	21,034	22,038	22,395	23,578	2,286	2,320
SC	3,873	4,219	4,910	5,225	2,159	2,124
SD	1,913	1,934	2,158	2,194	2,363	2,325
TX	13,035	12,762	17,029	17,004	2,196	2,129
VA	1,489	1,481	3,638	3,418	2,007	1,989
WA	4,616	4,690	4,736	4,810	2,352	2,295
WI	3,296	3,882	3,785	4,515	2,404	2,303
30 Sts	241,858	247,230	301,048	305,373	2,175	2,181
Oth Sts ²	13,518	14,317	19,125	20,112	2,207	2,183
US	255,376	261,547	320,173	325,485	2,177	2,181

¹ Includes all layers and eggs produced in both table egg and hatching egg flocks regardless of size.

² Estimates for individual States are not available.

**Egg Production: By Type, State, and United States,
July 1999-00**

State	Total Production		Table Eggs ¹		Hatching Eggs ¹	
	1999	2000	1999	2000	1999	2000
	<i>Million Eggs</i>	<i>Million Eggs</i>	<i>Million Eggs</i>	<i>Million Eggs</i>	<i>Million Eggs</i>	<i>Million Eggs</i>
AL	207	200	77	62	130	138
AR	297	299	108	114	189	185
CA	542	523				
CO	75	84				
CT	69	75				
FL	222	221	209	209	13	12
GA	424	427	235	249	189	178
HI	12.2	12.2	12.2	12.2	0	0
IL	72	79	68	75	4	4
IN	500	515	487	502	13	13
IA	559	634				
ME	106	87				
MD	68	60	62	54	6	6
MI	130	142				
MN	268	275	258	265	10	10
MS	130	133	36	42	94	91
MO	134	140				
NE	240	249	240	249	0	0
NY	83	95				
NC	215	205	81	78	134	127
OH	684	707				
OK	80	79	45	45	35	34
OR	66	65	65	64	1	1
PA	503	529	487	508	16	21
SC	106	105	88	87	18	18
SD	51	49	51	49	0	0
TX	373	355				
VA	77	70	38	34	39	36
WA	110	114				
WI	91	96				
30 Sts	6,495	6,624	5,472	5,615	1,023	1,009
Oth Sts ²	408	439	325	338	83	101
US	6,903	7,063	5,797	5,953	1,106	1,110

¹ Data by type of flock not shown for some States to avoid disclosing individual operations.

² Estimates for individual States are not available.

**Egg Production: By Type, State, and United States,
August 1999-00**

State	Total Production		Table Eggs ¹		Hatching Eggs ¹	
	1999	2000	1999	2000	1999	2000
	<i>Million Eggs</i>	<i>Million Eggs</i>	<i>Million Eggs</i>	<i>Million Eggs</i>	<i>Million Eggs</i>	<i>Million Eggs</i>
AL	205	200	75	61	130	139
AR	293	296	107	115	186	181
CA	546	530				
CO	78	79				
CT	69	77				
FL	227	230	214	218	13	12
GA	417	426	234	251	183	175
HI	11.9	12.0	11.9	12.0	0	0
IL	75	80	72	76	3	4
IN	495	505	482	492	13	13
IA	585	625				
ME	112	85				
MD	64	62	58	57	6	5
MI	137	137				
MN	271	278	261	269	10	9
MS	131	130	39	41	92	89
MO	136	144				
NE	239	260	239	260	0	0
NY	85	96				
NC	213	202	81	80	132	122
OH	696	708				
OK	82	79	47	46	35	33
OR	63	67	62	65	1	2
PA	512	547	496	526	16	21
SC	106	111	88	93	18	18
SD	51	51	51	51	0	0
TX	374	362				
VA	73	68	33	34	40	34
WA	111	110				
WI	91	104				
30 Sts	6,549	6,661	5,539	5,669	1,010	992
Oth Sts ²	422	439	337	341	85	98
US	6,971	7,100	5,876	6,010	1,095	1,090

¹ Data by type of flock not shown for some States to avoid disclosing individual operations.

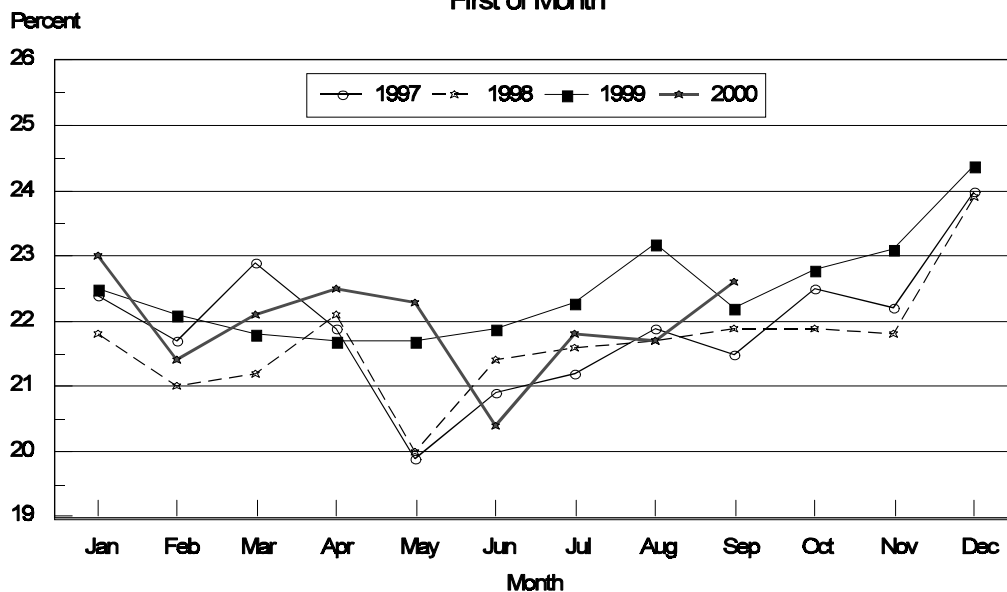
² Estimates for individual States are not available.

**Forced Molt: Percent of All Layers by Month,
United States, 1999-00 ¹**

Month	Percent Being Molted		Percent with Molt Completed	
	1999	2000	1999	2000
	<i>Percent</i>	<i>Percent</i>	<i>Percent</i>	<i>Percent</i>
Jan	4.1	2.9	22.5	22.9
Feb	4.9	5.0	22.1	21.4
Mar	3.3	3.7	21.8	22.1
Apr	2.8	2.2	21.7	22.5
May	5.6	4.0	21.7	22.3
Jun	5.2	5.8	21.9	20.4
Jul	5.5	4.8	22.1	21.9
Aug	4.6	4.3	23.0	21.8
Sep	4.3	4.6	22.2	22.6
Oct	4.2		22.8	
Nov	3.6		23.1	
Dec	2.0		24.4	

¹ As of first of month.

**All Layers: United States
Percent Molt Completed, 1997 - 2000
First of Month**



**Forced Molt: Percent of All Layers by State
and United States, September 1999-00 ¹**

State	Percent Being Molted		Percent with Molt Completed	
	1999	2000	1999	2000
	<i>Percent</i>	<i>Percent</i>	<i>Percent</i>	<i>Percent</i>
AL	2.0	2.0	11.5	12.0
AR	1.0	3.0	11.0	9.5
CA	6.5	6.5	41.5	36.5
CO	5.0	0.0	25.0	26.5
CT	3.5	3.0	9.5	12.0
FL	6.5	5.5	30.5	33.5
GA	3.5	3.0	17.0	21.0
HI	8.0	4.0	43.5	49.0
IL	0.0	6.0	16.5	42.5
IN	2.5	3.5	28.5	27.5
IA	3.5	4.0	28.0	28.5
ME	0.0	0.0	0.0	0.0
MD	10.5	6.5	31.0	29.5
MI	2.0	4.0	28.5	28.5
MN	5.0	3.0	34.5	31.5
MS	2.0	4.0	12.5	16.0
MO	6.0	0.0	24.5	13.0
NE	8.0	5.0	26.0	25.0
NY	2.5	1.0	3.5	6.0
NC	2.5	1.5	9.5	9.0
OH	2.0	10.5	13.5	15.5
OK	1.0	1.5	9.0	9.0
OR	10.5	9.0	33.0	35.0
PA	6.0	5.0	21.0	17.0
SC	12.5	2.0	16.0	33.5
SD	2.5	2.0	30.5	25.5
TX	12.0	4.0	22.0	19.0
VA	3.0	3.0	10.0	16.0
WA	4.0	9.0	43.5	38.5
WI	2.5	7.5	18.0	29.0
30 Sts	4.5	4.6	22.3	22.4
Oth Sts ²	2.8	5.8	20.9	26.3
US	4.3	4.6	22.2	22.6

¹ As of first of month.

² Estimates for individual States are not available.

**Hatchery Production: Eggs in Incubators, Chicks Hatched,
and Placements by Type, United States, August-September 1999-00**

Item	1999	2000	2000 as % of 1999
	<i>1,000</i>	<i>1,000</i>	<i>Percent</i>
Egg-Type			
Eggs in Incubators on Sep 1	35,202	34,370	98
Chicks Hatched During Aug	35,454	34,317	97
Chicks Hatched Jan thru Aug	306,660	290,659	95
Pullets Hatched During Aug for Intended Placements in Hatchery Supply Flocks	318	275	86
7-18 Month Earlier ¹	3,085	2,983	97
Broiler-Type			
Eggs in Incubators on Sep 1	617,128	613,689	99
Chicks Hatched During Aug	741,716	739,931	100
Chicks Hatched Jan thru Aug	5,893,047	5,953,221	101
Pullets Hatched During Aug for Intended Placements in Hatchery Supply Flocks	7,665	7,288	95
7-15 Months Earlier ²	63,377	64,359	102

¹ 2000 includes pullet chicks hatched Feb 1999 through Jan 2000.

² 2000 includes pullet chicks hatched May 1999 through Jan 2000.

**Egg-Type Eggs in Incubators: By Region and United States,
September 1, 1999-00**

Geographic Division	1999	2000	2000 as % of 1999
	<i>1,000</i>	<i>1,000</i>	<i>Percent</i>
North Atlantic	6,253	6,174	99
E North Central	9,033	8,518	94
W North Central	5,966	6,031	101
South Atlantic	5,199	4,526	87
South Central	4,683	4,634	99
West	4,068	4,487	110
US	35,202	34,370	98

Regional Listing:

North Atlantic = CT, ME, MA, NH, NJ, NY, PA, RI, VT.

E North Central = IL, IN, MI, OH, WI.

W North Central = IA, KS, MN, MO, NE, ND, SD.

South Atlantic = DE, FL, GA, MD, NC, SC, VA, WV.

South Central = AL, AR, KY, LA, MS, OK, TN, TX.

West = AK, AZ, CA, CO, HI, ID, MT, NM, NV, OR, UT, WA, WY.

**Egg-Type Chicks Hatched: By State and United States,
August 1999-00**

State	August			Jan-Aug		
	1999	2000	2000 as % of 1999	1999	2000	2000 as % of 1999
	<i>1,000</i>	<i>1,000</i>	<i>Percent</i>	<i>1,000</i>	<i>1,000</i>	<i>Percent</i>
AR	813	1,067	131	6,480	6,482	100
FL	990	983	99	8,552	8,132	95
GA	2,019	1,955	97	15,796	15,172	96
IN	6,259	4,771	76	56,980	46,700	82
IA	4,225	5,106	121	38,983	44,519	114
KS	370	405	109	2,600	2,369	91
MN	1,422	1,468	103	14,736	14,258	97
MO	336	336	100	2,835	2,835	100
PA	4,612	5,688	123	43,802	41,822	95
Oth Sts ¹	14,408	12,538	87	115,896	108,370	94
US	35,454	34,317	97	306,660	290,659	95

¹ Not published separately to avoid disclosing data for individual operations.

Egg-Type Chicks Hatched: By Month, United States, 1998-00

Month	By Months				Cumulative			
	1998	1999	2000	2000 as % of 1999	1998	1999	2000	2000 as % of 1999
	<i>1,000</i>	<i>1,000</i>	<i>1,000</i>	<i>Percent</i>	<i>1,000</i>	<i>1,000</i>	<i>1,000</i>	<i>Percent</i>
Jan	37,168	35,242	34,125	97	37,168	35,242	34,125	97
Feb	34,597	36,367	35,491	98	71,765	71,609	69,616	97
Mar	40,604	41,172	39,560	96	112,369	112,781	109,176	97
Apr	39,057	41,950	36,621	87	151,426	154,731	145,797	94
May	39,206	40,726	40,879	100	190,632	195,457	186,676	96
Jun	39,323	41,474	36,575	88	229,955	236,931	223,251	94
Jul	35,576	34,275	33,091	97	265,531	271,206	256,342	95
Aug	33,398	35,454	34,317	97	298,929	306,660	290,659	95
Sep	37,959	39,287			336,888	345,947		
Oct	34,667	39,044			371,555	384,991		
Nov	31,217	32,892			402,772	417,883		
Dec	35,501	33,045			438,273	450,928		

**Intended Placements: Egg-Type Pullet Chicks for Hatchery Supply
Flocks by Month and Total, United States, 1998-00 ¹**

Month	Pullet Chicks Hatched			2000 as % of 1999	Cumulative Potential Placements Relative to Current Supply Flocks 7-18 Months Earlier ²		
	1998	1999	2000		1999	2000	2001
	<i>1,000</i>	<i>1,000</i>	<i>1,000</i>	<i>Percent</i>	<i>1,000</i>	<i>1,000</i>	<i>1,000</i>
Jan	189	166	212	128	3,029	3,012	3,114
Feb	250	267	251	94	3,120	2,945	3,235
Mar	225	257	286	111	3,020	3,078	3,192
Apr	333	287	309	108	2,942	2,981	
May	192	283	343	121	3,044	2,900	
Jun	354	187	223	119	3,132	2,945	
Jul	298	231	352	152	3,108	2,937	
Aug	185	318	275	86	3,085	2,983	
Sep	324	227			3,102	2,967	
Oct	358	277			3,134	2,996	
Nov	217	262			3,088	3,018	
Dec	183	175			3,179	3,078	
Total	3,108	2,937					

¹ Reported by leading breeders. Coverage may not be 100 percent. Includes expected pullet chicks from eggs sold during the preceding month at the rate of 125 pullet chicks per 30 dozen case of eggs.

² For August 2000, includes breeder pullet chicks hatched Feb 1999 through Jan 2000. The 7-18 months represent the first laying cycle. Molting and additional laying cycles will increase the cumulative potential placements.

**Broiler-Type Eggs in Incubators: By Region
and United States, September 1, 1999-00**

Geographic Division	1999	2000	2000 as % of 1999
	<i>1,000</i>	<i>1,000</i>	<i>Percent</i>
North Atlantic	12,286	10,469	85
E North Central	8,295	7,585	91
W North Central	20,768	19,832	95
South Atlantic	231,721	226,241	98
South Central	319,388	326,104	102
West	24,670	23,458	95
US	617,128	613,689	99

**Broiler-Type Chicks Hatched: By State
and United States, August 1999-00**

State	August			Jan-Aug		
	1999	2000	2000 as % of 1999	1999	2000	2000 as % of 1999
	<i>1,000</i>	<i>1,000</i>	<i>Percent</i>	<i>1,000</i>	<i>1,000</i>	<i>Percent</i>
AL	98,573	103,430	105	772,146	821,111	106
AR	107,813	108,535	101	862,446	871,405	101
DE	16,111	14,656	91	127,359	121,780	96
FL	9,646	9,616	100	78,287	77,502	99
GA	111,909	107,355	96	888,352	883,661	99
MD	30,655	30,621	100	248,206	244,504	99
MS	65,706	66,305	101	517,030	522,957	101
NC	63,624	63,793	100	505,614	507,475	100
PA	12,634	13,035	103	102,880	103,175	100
SC	16,628	16,595	100	131,152	133,737	102
TX	47,583	49,101	103	384,325	411,863	107
VA	24,400	23,717	97	191,980	190,986	99
CA TN & WV	40,334	38,601	96	321,083	321,046	100
15 Sts ¹	645,616	645,360	100	5,130,860	5,211,202	102
Oth Sts ²	96,100	94,571	98	762,187	742,019	97
US	741,716	739,931	100	5,893,047	5,953,221	101

¹ States in the weekly hatchery production estimating program.

² Not published separately to avoid disclosing data for individual operations.

Broiler Chicks Hatched: By Month, United States, 1998-00

Month	By Months				Cumulative			
	1998	1999	2000	2000 as % of 1999	1998	1999	2000	2000 as % of 1999
	<i>1,000</i>	<i>1,000</i>	<i>1,000</i>	<i>Percent</i>	<i>1,000</i>	<i>1,000</i>	<i>1,000</i>	<i>Percent</i>
Jan	711,373	735,768	749,375	102	711,373	735,768	749,375	102
Feb	645,180	662,604	700,967	106	1,356,553	1,398,372	1,450,342	104
Mar	730,316	755,804	756,351	100	2,086,869	2,154,176	2,206,693	102
Apr	708,260	734,734	743,516	101	2,795,129	2,888,910	2,950,209	102
May	739,319	766,422	775,181	101	3,534,448	3,655,332	3,725,390	102
Jun	717,967	744,372	748,008	100	4,252,415	4,399,704	4,473,398	102
Jul	722,715	751,627	739,892	98	4,975,130	5,151,331	5,213,290	101
Aug	715,650	741,716	739,931	100	5,690,780	5,893,047	5,953,221	101
Sep	695,281	700,016			6,386,061	6,593,063		
Oct	693,204	697,434			7,079,265	7,290,497		
Nov	674,851	676,769			7,754,116	7,967,266		
Dec	737,822	748,438			8,491,938	8,715,704		

**Intended Placements: Broiler-Type Pullet Chicks for Hatchery
Supply Flocks by Month and Total, 1998-00 ¹**

Month	Pullet Chicks Hatched			2000 as % of 1999	Cumulative Potential Placements Relative to Current Supply Flocks 7-15 Months Earlier ²		
	1998	1999	2000		1999	2000	2001
	<i>1,000</i>	<i>1,000</i>	<i>1,000</i>	<i>Percent</i>	<i>1,000</i>	<i>1,000</i>	<i>1,000</i>
US Place- ments							
Jan	6,765	7,059	6,861	97	59,403	64,139	63,298
Feb	6,328	6,882	7,001	102	59,937	64,344	62,487
Mar	6,776	7,284	7,310	100	60,699	64,697	62,791
Apr	6,687	7,038	6,764	96	61,775	64,663	
May	7,062	7,736	7,435	96	61,893	64,725	
Jun	6,932	7,041	6,829	97	62,877	64,827	
Jul	6,788	7,088	6,310	89	63,005	64,536	
Aug	7,109	7,665	7,288	95	63,377	64,359	
Sep	7,328	6,870			63,197	63,624	
Oct	6,883	7,121			63,549	63,893	
Nov	7,312	6,984			63,799	63,569	
Dec	6,904	6,993			64,426	63,339	
Annual Total	82,874	85,761					
Total Place- ments ³							
Jan	8,613	8,679	8,069	93			
Feb	8,273	8,473	8,302	98			
Mar	8,760	8,863	8,798	99			
Apr	8,300	8,572	8,522	99			
May	8,957	9,463	8,917	94			
Jun	8,757	8,333	8,201	98			
Jul	8,423	8,342	7,621	91			
Aug	8,686	8,983	8,657	96			
Sep	8,985	8,044					
Oct	8,756	8,223					
Nov	9,412	8,220					
Dec	8,830	8,299					
Annual Total	104,752	102,494					

¹ Reported by leading breeders. Coverage may not be 100 percent. Includes expected pullet chicks from eggs sold during the preceding month at the rate of 125 pullet chicks per 30 dozen case of eggs.

² For Aug 2000, includes breeder pullet chicks hatched May 1999 through Jan 2000.

³ U.S. production of intended placements worldwide.

Procedures and Reliability

Data Sources: Primary data for the "**Chickens and Eggs**" report are from weekly and/or monthly questionnaires sent to producers. An attempt is made to collect information for layer and egg estimates from each known contractor and independent producer who has over 30,000 table egg layers. Coverage for operations with less than 30,000 table egg layers are estimated each month based on data reported in December. Approximately 900 contractors, independent egg producers, and started pullet operations are contacted each month. All known hatcheries, approximately 330, are contacted for information on a weekly and/or monthly basis.

Revisions: The previous month's estimates are subject to revision if late reports or corrected data indicates a different level. Additionally, revisions needed after the monthly report will be made at the end of the marketing year and published in the annual summaries of "**Chickens and Eggs Summary**" and "**Hatchery Production**".

Procedures and Reliability: Operations are mailed a questionnaire and given adequate time to respond by mail. Those that do not respond are phoned. Great care is exercised to ensure that all operations are accounted for during each survey period. However, there are usually missing reports that must be accounted for in the estimates.

Sound statistical methodology is employed to derive estimates from the reported data. All data are checked for unusual values. All operations' data are compared to their own past operating profiles and also to trends from other operations. Data for missing operations are estimated based on similar operations or historical data. Survey data are subject to non-sampling errors such as omissions and mistakes in reporting and in processing. While these errors cannot be measured directly, they are minimized by reviewing all data for consistency and reasonableness.

Egg-type chicks hatched are comprised of all chicks of egg-type domesticated breeds including males and chicks destined for hatchery supply flocks and research purposes. The relationship of chicks hatched to chicken inventory and poultry marketings is carefully monitored. The disposition of egg-type chicks hatched prior to placement into the laying flock can vary significantly, which can make comparisons to changes in layer inventory inconsistent over time.

Intended placement data reported by leading breeders include pullet chicks expected from eggs sold the preceding month. The breeders in this report account for a large percentage of replacement pullets for hatchery supply flocks. Production of replacement pullets by these breeders indicates the number of pullets available to hatchery egg supply flocks several months before the pullets will actually move into the flocks. Beginning with the January 1996 publication the broiler-type cumulative potential placements went from 7-14 months earlier to 7-15 months earlier. The egg-type cumulative potential placements of 7-18 months represent the first laying cycle. Molting and additional laying cycles will increase the cumulative potential placements of egg-type hatching flocks.

The next "Chickens and Eggs" report will be released at 3 p.m. on October 23, 2000.

The United States Department of Agriculture (USDA) prohibits discrimination in all its programs on the basis of race, color, national origin, gender, religion, age, disability, political beliefs, sexual orientation, and marital or family status. (Not all prohibited bases apply to all programs.) Persons with disabilities who require alternative means for communication of program information (braille, large print, audiotape, etc.) should contact the USDA's TARGET Center at 202-720-2600 (voice and TDD).

To file a complaint of discrimination, write USDA, Director, Office of Civil Rights, Room 326-W, Whitten Building, 14th and Independence Avenue, SW, Washington, D.C., 20250-9410, or call 202-720-5964 (voice or TDD). USDA is an equal opportunity provider and employer.

ACCESS TO REPORTS!!

For your convenience, there are several ways to obtain NASS reports, data products, and services:

INTERNET ACCESS

All NASS reports are available free of charge on the worldwide Internet. For access, connect to the Internet and go to the NASS Home Page at: <http://www.usda.gov/nass/>. Select "Today's Reports" or Publications and then Reports by Calendar or Publications and then Search, by Title or Subject.

E-MAIL SUBSCRIPTION

There are two options for subscribing via e-mail. All NASS reports are available by subscription free of charge direct to your e-mail address. 1) Starting with the NASS Home Page at <http://www.usda.gov/nass/>, click on **Publications**, then click on the **Subscribe by E-mail** button which takes you to the page describing e-mail delivery of reports. Finally, click on **Go to the Subscription Page** and follow the instructions. 2) If you do NOT have Internet access, send an e-mail message to: usda-reports@usda.mannlib.cornell.edu. In the body of the message type the word: **list**.

AUTOFAX ACCESS

NASSFax service is available for some reports from your fax machine. Please call 202-720-2000, using the handset attached to your fax. Respond to the voice prompts. Document 0411 is a list of available reports.

----- PRINTED REPORTS OR DATA PRODUCTS

CALL OUR TOLL-FREE ORDER DESK: 800-999-6779 (U.S. and Canada)
Other areas, please call 703-834-0125 FAX: 703-834-0110
(Visa, MasterCard, check, or money order acceptable for payment.)

ASSISTANCE

For **assistance** with general agricultural statistics or further information about NASS or its products or services, contact the **Agricultural Statistics Hotline** at **800-727-9540**, 7:30 a.m. to 4:00 p.m. ET, or e-mail: nass@nass.usda.gov.

USDA to Hold Public Forum
October 16, 2000

Holiday Inn Mart Plaza
Chicago, Illinois

The National Agricultural Statistics Service will be organizing an open forum for Data Users. The purpose will be to provide updates on pending changes in the various statistical and information programs, and to seek comments and input from data users. The other USDA agencies to be represented will include the Agricultural Marketing Service, the Economic Research Service, the Foreign Agricultural Service, and the World Agricultural Outlook Board. The Foreign Trade Division from the Census Bureau and The National Weather Service will also be included in the meeting.

For registration details, see the NASS home page at <http://www.usda.gov/nass/> or contact Karlyn McCutcheon (NASS) at (202) 690-8141 or at hq_dapp@nass.usda.gov