

Chickens and Eggs

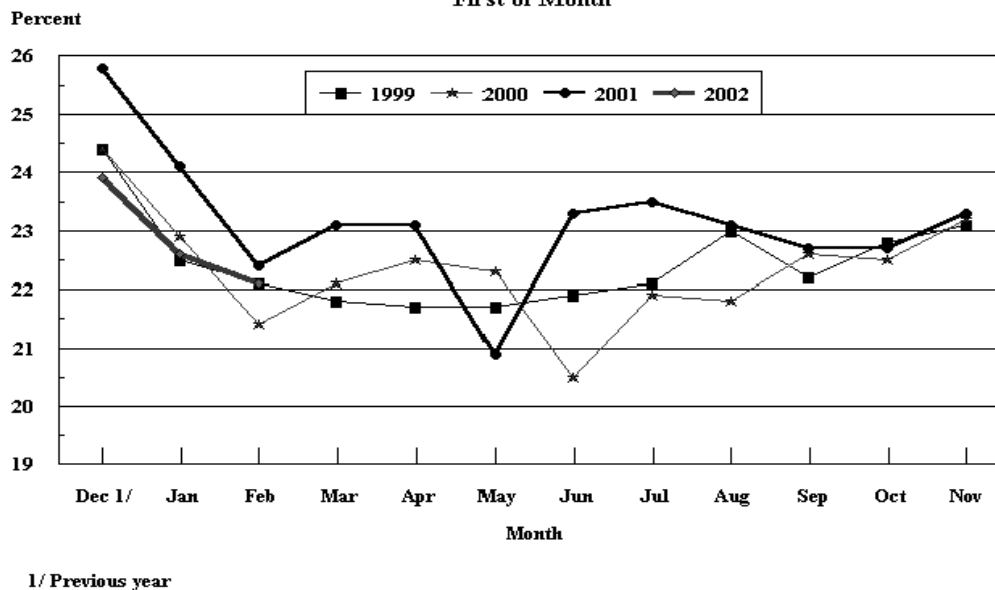
Released February 22, 2002, by the National Agricultural Statistics Service (NASS), Agricultural Statistics Board, U.S. Department of Agriculture. For information on "Chickens and Eggs" call Tom Kruchten at (202) 690-4870. For information on Hatch call Jody Roberts at (202) 690-8632, office hours 7:30 a.m. to 4:00 p.m. ET.

January Egg Production Up 2 Percent

U.S. egg production totaled 7.25 billion during January 2002, up 2 percent from last year. Production included 6.16 billion table eggs and 1.09 billion hatching eggs, of which 1.03 billion were broiler-type and 63.0 million were egg-type. The total number of layers during January 2002 averaged 338 million, up 1 percent from the total average number of layers during January 2001. January egg production per 100 layers was 2,143 eggs, up one percent from the 2,128 eggs in January 2001.

January 2002 contained 23 weekdays, two holidays and four Saturdays, equal to January 2001.

All Layers: United States
Percent Molt Completed, 1999 - 2002
First of Month



All layers in the U.S. on February 1, 2002, totaled 338 million, up 1 percent from a year ago. The 338 million layers consisted of 278 million layers producing table or commercial type eggs, 57.2 million layers producing broiler-type hatching eggs, and 2.64 million layers producing egg-type hatching eggs. Rate of lay per day on February 1, 2002, averaged 68.4 eggs per 100 layers, down 1 percent from the 69.2 eggs a year ago.

Laying flocks in the 30 major egg producing States produced 6.80 billion eggs during January 2002, up 2 percent from a year ago. The average number of layers during January, at 317 million, was up 2 percent from a year earlier.

Individual State estimates are available for the 30 major egg producing States. These States are listed on page 8 of this release and account for approximately 95 percent of the total U.S. egg production. Production for the other States are grouped into an "Other States" category and combined with the 30 States published individually to obtain a U.S. estimate. Individual State estimates for "Other States" are available annually in the "**Chickens and Eggs Summary**" report.

Egg-Type Chicks Hatched Down 6 Percent

Egg-type chicks **hatched** during January totaled 35.5 million, down 6 percent from January 2001. **Eggs in incubators** totaled 32.0 million on February 1, 2002, down 9 percent from a year ago.

Domestic placements of **egg-type pullet chicks for future hatchery supply flocks** by leading breeders totaled 228,000 during January 2002, down 10 percent from January 2001.

Broiler Hatch Up 6 Percent

The January 2002 **hatch** of broiler-type chicks, at 776 million, was up 6 percent from January of the previous year. There were 638 million **eggs in incubators** on February 1, 2002, up 4 percent from a year earlier.

Leading breeders placed 6.66 million **broiler-type pullet chicks for future domestic hatchery supply flocks** during January 2002, down slightly from January 2001.

**All Layers: Average Number on Hand During the Month,
United States, 1999-02**

Month	1999	2000	2001	2002
	<i>1,000 Layers</i>	<i>1,000 Layers</i>	<i>1,000 Layers</i>	<i>1,000 Layers</i>
Dec ¹	321,972	328,878	332,259	338,524
Jan	322,356	328,657	333,798	338,265
Feb	322,827	329,941	335,813	
Mar	322,782	330,961	336,820	
Apr	321,539	329,185	337,139	
May	320,510	326,288	335,159	
Jun	320,441	325,057	332,920	
Jul	319,819	325,663	332,231	
Aug	320,188	325,853	332,801	
Sep	322,409	326,337	335,020	
Oct	325,287	328,278	337,085	
Nov	328,268	330,830	337,915	

¹ December preceding year.

**Eggs: Production During the Month by Type,
United States, 2001-02**

Month	Total Eggs		Table Eggs		Hatching Eggs	
	2001	2002	2001	2002	2001	2002
	<i>Million Eggs</i>	<i>Million Eggs</i>	<i>Million Eggs</i>	<i>Million Eggs</i>	<i>Million Eggs</i>	<i>Million Eggs</i>
Dec ¹	7,287	7,403	6,208	6,329	1,079	1,074
Jan	7,103	7,248	6,043	6,155	1,060	1,093
Feb	6,574		5,549		1,025	
Mar	7,321		6,215		1,106	
Apr	7,114		6,025		1,089	
May	7,221		6,101		1,120	
Jun	7,005		5,914		1,091	
Jul	7,195		6,097		1,098	
Aug	7,204		6,126		1,078	
Sep	7,062		6,005		1,057	
Oct	7,340		6,258		1,082	
Nov	7,191		6,159		1,032	
During Year	85,617	14,651	72,700	12,484	12,917	2,167

¹ December preceding year.

**Layers and Eggs: Layers on Hand and Eggs Produced by Type,
and Forced Molt, United States, December-January 2000-02**

Item	Unit	2000	2001	2001 as % of 2000
Layers During Dec	1,000			
All Layers		332,259	338,524	102
Table Egg Type		275,079	279,623	102
Hatching Egg Type		57,180	58,901	103
Broiler-Type Hatching		54,456	56,297	103
Egg-Type Hatching		2,724	2,604	96
Eggs per 100 Layers During Dec	Number			
All Layers		2,193	2,187	100
Table Egg Type		2,257	2,263	100
Hatching Egg Type		1,887	1,823	97
Broiler-Type Hatching		1,866	1,798	96
Egg-Type Hatching		2,313	2,381	103
Eggs Produced During Dec	Million			
All Layers		7,287	7,403	102
Table Egg Type		6,208	6,329	102
Hatching Egg Type		1,079	1,074	100
Broiler-Type Hatching		1,016	1,012	100
Egg-Type Hatching		63	62	98
		2001	2002	2002 as % of 2001
Layers on Jan 1	1,000			
All Layers		332,107	338,853	102
Table Egg Type		274,106	279,503	102
Hatching Egg Type		58,001	59,350	102
Broiler-Type Hatching		55,156	56,760	103
Egg-Type Hatching		2,845	2,590	91
Eggs per 100 Layers on Jan 1	Number			
All Layers		70.4	69.8	99
Table Egg Type		72.5	72.1	99
Hatching Egg Type		60.3	58.9	98
Broiler-Type Hatching		59.6	58.0	97
Egg-Type Hatching		75.3	78.1	104
Forced Molt Layers on Jan 1	Percent			
Percent Being Molted		3.4	4.1	121
Percent with Molt Completed		24.1	22.6	94
Layers Sold for Slaughter During Dec	1,000	16,285	13,558	83
Layers Rendered, Died, Destroyed, Composted or Disappeared For Any Reason During Dec		3,869	4,394	114
Pullets Less Than 20 Weeks of Age, Jan 1	1,000	92,909	93,813	101
Pullets Added During Dec ¹	1,000	22,293	21,338	96

¹ Pullet chicks one day old added to pullet flocks.

**Layers and Eggs: Layers on Hand and Eggs Produced by Type,
and Forced Molt, United States, January-February 2001-02**

Item	Unit	2001 ¹	2002	2002 as % of 2001
Layers During Jan	1,000			
All Layers		333,798	338,265	101
Table Egg Type		275,291	278,672	101
Hatching Egg Type		58,507	59,593	102
Broiler-Type Hatching		55,677	56,971	102
Egg-Type Hatching		2,830	2,622	93
Eggs per 100 Layers During Jan	Number			
All Layers		2,128	2,143	101
Table Egg Type		2,195	2,209	101
Hatching Egg Type		1,812	1,834	101
Broiler-Type Hatching		1,787	1,808	101
Egg-Type Hatching		2,297	2,403	105
Eggs Produced During Jan	Million			
All Layers		7,103	7,248	102
Table Egg Type		6,043	6,155	102
Hatching Egg Type		1,060	1,093	103
Broiler-Type Hatching		995	1,030	104
Egg-Type Hatching		65	63	97
Layers on Feb 1	1,000			
All Layers		335,449	337,633	101
Table Egg Type		276,453	277,821	100
Hatching Egg Type		58,996	59,812	101
Broiler-Type Hatching		56,187	57,169	102
Egg-Type Hatching		2,809	2,643	94
Eggs per 100 Layers on Feb 1	Number			
All Layers		69.2	68.4	99
Table Egg Type		71.0	70.4	99
Hatching Egg Type		60.6	59.2	98
Broiler-Type Hatching		59.8	58.3	97
Egg-Type Hatching		77.0	78.4	102
Forced Molt Layers, Feb 1	Percent			
Percent Being Molted		5.1	4.6	90
Percent with Molt Completed		22.3	22.1	99
Layers Sold for Slaughter During Jan	1,000	15,348	17,366	113
Layers Rendered, Died, Destroyed. Composted or Disappeared For Any Reason During Jan	1,000	4,002	5,153	129
Pullets Less Than 20 Weeks of Age, Feb 1	1,000	97,177	93,786	97
Pullets Added During Jan ²	1,000	26,779	22,921	86

¹ Revised.

² Pullet chicks one day old added to pullet flocks.

**Layers and Eggs: Layers on Hand and Eggs Produced by Type,
and Forced Molt, 30 Selected States, December-January 2000-02 ¹**

Item	Unit	2000	2001	2001 as % of 2000
Layers During Dec	1,000			
All Layers		311,271	317,543	102
Table Egg Type		258,709	263,394	102
Hatching Egg Type		52,562	54,149	103
Broiler-Type Hatching		49,929	51,644	103
Egg-Type Hatching		2,633	2,505	95
Eggs per 100 Layers During Dec	Number			
All Layers		2,191	2,188	100
Table Egg Type		2,253	2,264	100
Hatching Egg Type		1,883	1,821	97
Broiler-Type Hatching		1,861	1,793	96
Egg-Type Hatching		2,317	2,395	103
Eggs Produced During Dec	Million			
All Layers		6,819	6,949	102
Table Egg Type		5,829	5,963	102
Hatching Egg Type		990	986	100
Broiler-Type Hatching		929	926	100
Egg-Type Hatching		61	60	98
		2001	2002	2002 as % of 2001
Layers on Jan 1	1,000			
All Layers		311,134	317,976	102
Table Egg Type		257,686	263,398	102
Hatching Egg Type		53,448	54,578	102
Broiler-Type Hatching		50,692	52,085	103
Egg-Type Hatching		2,756	2,493	90
Eggs per 100 Layers on Jan 1	Number			
All Layers		70.3	69.8	99
Table Egg Type		72.4	72.1	100
Hatching Egg Type		60.3	58.8	98
Broiler-Type Hatching		59.5	57.8	97
Egg-Type Hatching		75.6	78.1	103
Forced Molt Layers on Jan 1	Percent			
Percent Being Molted		3.5	4.0	114
Percent with Molt Completed		24.1	22.6	94
Layers Sold for Slaughter During Dec	1,000	15,284	12,635	83
Layers Rendered, Died, Destroyed, Composted or Disappeared For Any Reason During Dec	1,000	3,717	4,225	114
Pullets Less Than 20 Weeks of Age, Jan 1	1,000	86,165	88,215	102
Pullets Added During Dec ²	1,000	20,811	20,202	97

¹ The 30 States are listed in the table on page 8.

² Pullet chicks one day old added to pullet flocks.

Layers and Eggs: Layers on Hand and Eggs Produced by Type, and Forced Molt, 30 Selected States, January-February, 2001-02 ¹

Item	Unit	2001 ²	2002	2002 as % of 2001
Layers During Jan	1,000			
All Layers		312,763	317,469	102
Table Egg Type		258,896	262,621	101
Hatching Egg Type		53,867	54,848	102
Broiler-Type Hatching		51,122	52,327	102
Egg-Type Hatching		2,745	2,521	92
Eggs per 100 Layers During Jan	1,000			
All Layers		2,123	2,143	101
Table Egg Type		2,189	2,208	101
Hatching Egg Type		1,808	1,831	101
Broiler-Type Hatching		1,782	1,802	101
Egg-Type Hatching		2,295	2,420	105
Eggs Produced During Jan	Million			
All Layers		6,641	6,803	102
Table Egg Type		5,667	5,799	102
Hatching Egg Type		974	1,004	103
Broiler-Type Hatching		911	943	104
Egg-Type Hatching		63	61	97
Layers on Feb 1	1,000			
All Layers		314,361	316,927	101
Table Egg Type		260,089	261,829	101
Hatching Egg Type		54,272	55,098	102
Broiler-Type Hatching		51,544	52,559	102
Egg-Type Hatching		2,728	2,539	93
Eggs per 100 Layers on Feb 1	Number			
All Layers		69.1	68.4	99
Table Egg Type		70.9	70.3	99
Hatching Egg Type		60.7	59.0	97
Broiler-Type Hatching		59.8	58.1	97
Egg-Type Hatching		77.3	78.4	101
Forced Molt Layers, Feb 1	Percent			
Percent Being Molted		4.9	4.5	92
Percent with Molt Completed		22.5	22.0	98
Layers Sold for Slaughter During Jan	1,000	14,660	15,978	109
Layers Rendered, Died, Destroyed, Composted or Disappeared For Any Reason During Jan	1,000	3,813	4,906	129
Pullets Less Than 20 Weeks of Age, Feb 1	1,000	90,991	88,177	97
Pullets Added During Jan ³	1,000	25,795	21,657	84

¹ The 30 States are listed in the table on page 8.

² Revised.

³ Pullet chicks one day old added to pullet flocks.

**Layers and Eggs: Layers on Hand and Eggs Produced by State
and United States, During December 2000-01**

State	Table Egg Layers in Flocks 30,000 and Above		All Layers ¹		Eggs per 100 for All Layers ¹	
	2000	2001	2000	2001	2000	2001
	<i>1,000</i>	<i>1,000</i>	<i>1,000</i>	<i>1,000</i>	<i>Number</i>	<i>Number</i>
AL	3,030	2,828	10,247	10,443	1,923	1,915
AR	5,537	4,979	15,250	14,906	1,974	1,885
CA	23,161	23,307	23,826	23,923	2,187	2,211
CO	2,934	3,037	3,418	3,546	2,311	2,256
CT	3,114	3,091	3,201	3,144	2,468	2,411
FL	10,166	10,149	10,753	10,881	2,232	2,261
GA	11,737	12,012	20,775	21,489	2,108	2,066
HI	588	490	616	552	1,899	1,866
IL	3,091	3,389	3,387	3,620	2,155	2,210
IN	22,377	21,760	23,129	22,481	2,235	2,237
IA	30,336	34,409	31,106	35,225	2,324	2,263
ME	3,796	3,810	3,870	3,865	2,295	2,323
MD	2,898	3,089	3,293	3,418	2,126	2,458
MI	5,904	6,390	6,155	6,641	2,307	2,214
MN	11,753	11,395	12,473	12,103	2,157	2,173
MS	1,797	1,935	6,649	6,821	2,030	1,979
MO	5,458	5,407	6,771	6,839	2,260	2,223
NE	11,732	11,504	11,832	11,604	2,147	2,085
NY	3,902	3,543	4,212	3,781	2,350	2,486
NC	3,554	3,216	11,093	11,160	1,974	1,935
OH	28,852	29,514	29,459	30,071	2,186	2,268
OK	1,897	1,840	3,923	3,907	1,963	1,945
OR	2,751	2,737	2,919	2,908	2,364	2,338
PA	22,482	22,448	23,931	23,820	2,328	2,317
SC	4,387	4,739	5,287	5,684	2,156	2,252
SD	2,067	2,166	2,267	2,366	2,338	2,156
TX	14,333	14,930	18,624	19,291	2,185	2,198
VA	1,484	1,490	3,366	3,340	2,020	1,946
WA	4,896	4,999	4,969	5,077	2,254	2,306
WI	3,873	4,050	4,470	4,637	2,416	2,523
30 Sts	253,887	258,653	311,271	317,543	2,191	2,188
Oth Sts ²	15,217	15,056	20,988	20,981	2,230	2,164
US	269,104	273,709	332,259	338,524	2,193	2,187

¹ Includes all layers and eggs produced in both table egg and hatching egg flocks regardless of size.

² Estimates for individual States are not available.

**Layers and Eggs: Layers on Hand and Eggs Produced by State
and United States, During January 2001-02**

State	Table Egg Layers in Flocks 30,000 and Above		All Layers ¹		Eggs per 100 for All Layers ¹	
	2001	2002	2001	2002	2001	2002
	<i>1,000</i>	<i>1,000</i>	<i>1,000</i>	<i>1,000</i>	<i>Number</i>	<i>Number</i>
AL	2,903	2,802	10,266	10,583	1,919	1,909
AR	5,466	4,755	15,571	14,836	1,965	1,887
CA	22,896	23,323	23,532	23,900	2,129	2,167
CO	3,128	2,995	3,625	3,513	2,320	2,135
CT	3,171	3,110	3,258	3,169	2,455	2,423
FL	10,191	10,138	10,860	10,866	2,182	2,144
GA	11,544	11,894	20,686	21,391	2,026	1,963
HI	586	489	615	547	1,902	1,828
IL	2,752	3,317	3,036	3,551	2,141	2,084
IN	22,517	21,727	23,269	22,430	2,162	2,202
IA	30,303	34,975	31,102	35,799	2,302	2,249
ME	3,879	3,813	3,948	3,865	2,503	2,554
MD	2,712	2,915	3,073	3,217	2,310	2,331
MI	5,847	6,227	6,114	6,483	2,273	2,146
MN	11,680	11,427	12,390	12,162	2,123	2,286
MS	1,821	1,857	6,710	6,794	1,997	1,943
MO	5,871	5,498	7,224	6,928	2,284	2,136
NE	11,674	11,598	11,774	11,698	2,191	2,060
NY	3,918	3,667	4,216	3,884	2,372	2,420
NC	3,506	3,140	11,275	11,078	1,951	1,932
OH	29,371	29,401	30,021	29,932	2,162	2,195
OK	1,950	1,856	4,045	4,008	1,978	1,946
OR	2,749	2,646	2,906	2,827	2,340	2,335
PA	22,571	22,548	24,085	23,938	2,296	2,293
SC	4,450	4,549	5,357	5,557	2,035	2,105
SD	1,992	2,168	2,192	2,368	2,281	2,154
TX	14,352	14,655	18,662	19,118	2,181	2,045
VA	1,354	1,463	3,367	3,434	1,841	1,864
WA	4,972	5,115	5,050	5,196	2,184	2,256
WI	3,925	3,820	4,534	4,397	2,360	2,388
30 Sts	254,051	257,888	312,763	317,469	2,123	2,143
Oth Sts ²	15,206	14,879	21,035	20,796	2,201	2,145
US	269,257	272,767	333,798	338,265	2,128	2,143

¹ Includes all layers and eggs produced in both table egg and hatching egg flocks regardless of size.

² Estimates for individual States are not available.

**Egg Production: By Type, State, and United States,
December 2000-01**

State	Total Production		Table Eggs ¹		Hatching Eggs ¹	
	2000	2001	2000	2001	2000	2001
	<i>Million Eggs</i>	<i>Million Eggs</i>	<i>Million Eggs</i>	<i>Million Eggs</i>	<i>Million Eggs</i>	<i>Million Eggs</i>
AL	197	200	62	64	135	136
AR	301	281	124	115	177	166
CA	521	529				
CO	79	80				
CT	79	76				
FL	240	246	228	231	12	15
GA	438	444	263	265	175	179
HI	11.7	10.3	11.7	10.3	0	0
IL	73	80	68	77	5	3
IN	517	503	503	490	14	13
IA	723	797				
ME	89	90				
MD	70	84	63	79	7	5
MI	142	147				
MN	269	263	259	254	10	9
MS	135	135	44	45	91	90
MO	153	152				
NE	254	242	254	242	0	0
NY	99	94				
NC	219	216	86	80	133	136
OH	644	682				
OK	77	76	45	43	32	33
OR	69	68	68	67	1	1
PA	557	552	539	536	18	16
SC	114	128	97	110	17	18
SD	53	51	53	51	0	0
TX	407	424				
VA	68	65	36	34	32	31
WA	112	117				
WI	108	117				
30 Sts	6,819	6,949	5,829	5,963	990	986
Oth Sts ²	468	454	379	366	89	88
US	7,287	7,403	6,208	6,329	1,079	1,074

¹ Data by type of flock not shown for some States to avoid disclosing individual operations.

² Estimates for individual States are not available.

**Egg Production: By Type, State, and United States,
January 2001-02**

State	Total Production		Table Eggs ¹		Hatching Eggs ¹	
	2001	2002	2001	2002	2001	2002
	<i>Million Eggs</i>	<i>Million Eggs</i>	<i>Million Eggs</i>	<i>Million Eggs</i>	<i>Million Eggs</i>	<i>Million Eggs</i>
AL	197	202	60	64	137	138
AR	276	280	109	106	167	174
CA	501	518				
CO	84	75				
CT	80	77				
FL	237	233	222	218	15	15
GA	379	420	222	243	157	177
HI	11.7	10.0	11.7	10.0	0	0
IL	65	74	60	70	5	4
IN	503	494	490	481	13	13
IA	716	805				
ME	99	99				
MD	71	75	65	70	6	5
MI	139	139				
MN	263	278	254	269	9	9
MS	134	132	43	41	91	91
MO	165	148				
NE	258	241	258	241	0	0
NY	100	94				
NC	220	214	84	77	136	137
OH	649	657				
OK	80	78	46	44	34	34
OR	68	66	67	64	1	2
PA	500	549	482	531	18	18
SC	109	117	92	99	17	18
SD	50	51	50	51	0	0
TX	407	391				
VA	62	64	29	30	33	34
WA	110	117				
WI	107	105				
30 Sts	6,641	6,803	5,667	5,799	974	1,004
Oth Sts ²	463	446	376	356	86	89
US	7,103	7,248	6,043	6,155	1,060	1,093

¹ Data by type of flock not shown for some States to avoid disclosing individual operations.

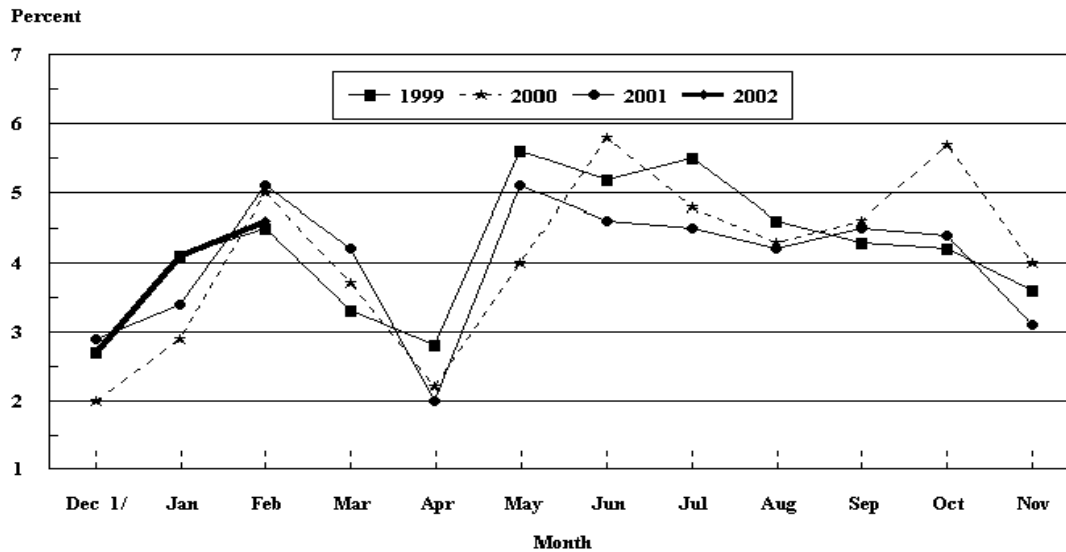
² Estimates for individual States are not available.

**Forced Molt: Percent of All Layers by Month,
United States, 2001-02 ¹**

Month	Percent Being Molted		Percent with Molt Completed	
	2001	2002	2001	2002
	<i>Percent</i>	<i>Percent</i>	<i>Percent</i>	<i>Percent</i>
Jan	3.4	4.1	24.1	22.6
Feb	5.1	4.6	22.3	22.1
Mar	4.2		23.1	
Apr	2.0		23.1	
May	5.1		20.9	
Jun	4.6		23.3	
Jul	4.5		23.4	
Aug	4.2		23.1	
Sep	4.5		22.7	
Oct	4.4		22.8	
Nov	3.1		23.2	
Dec	2.7		23.9	

¹ As of first of month.

**All Layers : United States
Percent Being Molted, 1999 - 2002
First of Month**



1/ Previous Year

**Forced Molt: Percent of All Layers by State
and United States, February 2001-02 ¹**

State	Percent Being Molted		Percent with Molt Completed	
	2001	2002	2001	2002
	<i>Percent</i>	<i>Percent</i>	<i>Percent</i>	<i>Percent</i>
AL	2.5	2.5	10.5	7.0
AR	4.0	1.0	10.5	7.5
CA	9.0	5.5	35.5	31.5
CO	2.5	7.5	26.0	29.5
CT	0.0	0.0	1.0	0.5
FL	5.5	10.0	32.0	30.0
GA	5.0	4.0	20.0	13.0
HI	3.0	8.0	48.0	40.0
IL	8.0	21.0	37.5	20.5
IN	5.0	5.0	28.0	28.5
IA	5.0	3.0	30.5	33.5
ME	0.0	0.0	0.0	0.0
MD	3.0	6.5	36.5	25.5
MI	3.0	5.5	26.0	42.0
MN	4.0	3.0	29.0	29.5
MS	4.0	5.0	12.0	7.0
MO	3.0	4.5	8.0	18.5
NE	5.5	7.0	27.0	24.0
NY	0.5	0.0	5.0	8.5
NC	1.0	1.5	10.0	6.5
OH	5.5	3.5	20.0	17.5
OK	2.0	0.0	6.5	6.5
OR	0.0	2.0	38.0	32.0
PA	7.5	4.5	17.5	18.5
SC	2.5	8.5	26.5	22.5
SD	3.5	4.0	31.0	30.5
TX	4.5	6.0	19.5	25.0
VA	3.0	6.0	11.5	9.0
WA	10.5	5.5	41.0	47.5
WI	10.0	7.5	29.0	27.0
30 Sts	4.9	4.5	22.5	22.0
Oth Sts ²	8.4	7.4	20.2	23.3
US	5.1	4.6	22.3	22.1

¹ As of first of month.

² Estimates for individual States are not available.

**Hatchery Production: Eggs in Incubators, Chicks Hatched,
and Placements by Type, United States, January-February 2001-02**

Item	2001	2002	2002 as % of 2001
	<i>1,000</i>	<i>1,000</i>	<i>Percent</i>
Egg-Type			
Eggs in Incubators on Feb 1	35,357	32,025	91
Chicks Hatched During Jan	37,976	35,533	94
Pullets Hatched During Jan for Intended Placements in Hatchery Supply Flocks	253	228	90
7-18 Month Earlier ¹	3,129	3,211	103
Broiler-Type			
Eggs in Incubators on Feb 1	612,779	637,582	104
Chicks Hatched During Jan	733,889	775,669	106
Pullets Hatched During Jan for Intended Placements in Hatchery Supply Flocks	6,685	6,660	100
7-15 Months Earlier ²	63,304	60,750	96

¹ 2002 includes pullet chicks hatched Jul 2000 through Jun 2001.

² 2002 includes pullet chicks hatched Oct 2000 through Jun 2001.

**Egg-Type Eggs in Incubators: By Region and United States,
February 1, 2001-02**

Geographic Division	2001	2002	2002 as % of 2001
	<i>1,000</i>	<i>1,000</i>	<i>Percent</i>
North Atlantic	5,611	4,357	78
E North Central	8,277	7,080	86
W North Central	7,338	6,361	87
South Atlantic	4,536	4,463	98
South Central	5,300	5,015	95
West	4,295	4,749	111
US	35,357	32,025	91

Regional Listing:

North Atlantic = CT, ME, MA, NH, NJ, NY, PA, RI, VT.

E North Central = IL, IN, MI, OH, WI.

W North Central = IA, KS, MN, MO, NE, ND, SD.

South Atlantic = DE, FL, GA, MD, NC, SC, VA, WV.

South Central = AL, AR, KY, LA, MS, OK, TN, TX.

West = AK, AZ, CA, CO, HI, ID, MT, NM, NV, OR, UT, WA, WY.

**Egg-Type Chicks Hatched: By State and United States,
January 2001-02**

State	January			Jan-Jan		
	2001	2002	2002 as % of 2001	2001	2002	2002 as % of 2001
	<i>1,000</i>	<i>1,000</i>	<i>Percent</i>	<i>1,000</i>	<i>1,000</i>	<i>Percent</i>
AR	764	805	105	764	805	105
FL	800	497	62	800	497	62
GA	2,182	2,231	102	2,182	2,231	102
IN	7,578	4,855	64	7,578	4,855	64
IA	5,912	5,720	97	5,912	5,720	97
MN	1,506	1,319	88	1,506	1,319	88
PA	5,613	4,540	81	5,613	4,540	81
Oth Sts ¹	13,621	15,566	114	13,621	15,566	114
US	37,976	35,533	94	37,976	35,533	94

¹ Not published separately to avoid disclosing data for individual operations.

Egg-Type Chicks Hatched: By Month, United States, 2000-02

Month	By Months				Cumulative			
	2000	2001	2002	2002 as % of 2001	2000	2001	2002	2002 as % of 2001
	<i>1,000</i>	<i>1,000</i>	<i>1,000</i>	<i>Percent</i>	<i>1,000</i>	<i>1,000</i>	<i>1,000</i>	<i>Percent</i>
Jan	34,178	37,976	35,533	94	34,178	37,976	35,533	94
Feb	34,656	38,198			68,834	76,174		
Mar	38,874	40,109			107,708	116,283		
Apr	36,649	41,691			144,357	157,974		
May	41,182	42,579			185,539	200,553		
Jun	37,265	40,601			222,804	241,154		
Jul	33,237	37,903			256,041	279,057		
Aug	34,324	35,162			290,365	314,219		
Sep	36,316	36,594			326,681	350,813		
Oct	36,077	36,501			362,758	387,314		
Nov	32,290	31,649			395,048	418,963		
Dec	34,690	31,504			429,738	450,467		

**Intended Placements: Egg-Type Pullet Chicks for Hatchery Supply
Flocks by Month and Total, United States, 2000-02¹**

Month	Pullet Chicks Hatched			2002 as % of 2001	Cumulative Potential Placements Relative to Current Supply Flocks 7-18 Months Earlier ²		
	2000	2001	2002		2000	2001	2002
	<i>1,000</i>	<i>1,000</i>	<i>1,000</i>	<i>Percent</i>	<i>1,000</i>	<i>1,000</i>	<i>1,000</i>
Jan	212	253	228	90	3,012	3,129	3,211
Feb	251	232			2,945	3,191	3,258
Mar	286	302			3,078	3,090	3,301
Apr	309	311			2,981	3,096	3,293
May	343	315			2,903	3,057	3,210
Jun	235	261			2,948	3,103	3,163
Jul	293	340			2,940	3,173	3,124
Aug	217	260			2,986	3,214	3,099
Sep	233	225			2,970	3,195	
Oct	241	158			2,999	3,211	
Nov	308	261			3,021	3,213	
Dec	245	206			3,081	3,185	
Total	3,173	3,124			35,864	37,857	

¹ Reported by leading breeders. Coverage may not be 100 percent. Includes expected pullet chicks from eggs sold during the preceding month at the rate of 125 pullet chicks per 30 dozen case of eggs.

² For January 2002, includes breeder pullet chicks hatched Jul 2000 through Jun 2001. The 7-18 months represent the first laying cycle. Molting and additional laying cycles will increase the cumulative potential placements.

**Broiler-Type Eggs in Incubators: By Region
and United States, February 1, 2001-02**

Geographic Division	2001	2002	2002 as % of 2001
	<i>1,000</i>	<i>1,000</i>	<i>Percent</i>
North Atlantic	11,531	11,515	100
E North Central	7,372	7,472	101
W North Central	20,405	20,643	101
South Atlantic	229,222	237,015	103
South Central	319,456	338,442	106
West	24,793	22,495	91
US	612,779	637,582	104

**Broiler-Type Chicks Hatched: By State
and United States, January 2001-02**

State	January			Jan-Jan		
	2001	2002	2002 as % of 2001	2001	2002	2002 as % of 2001
	<i>1,000</i>	<i>1,000</i>	<i>Percent</i>	<i>1,000</i>	<i>1,000</i>	<i>Percent</i>
AL	101,763	107,443	106	101,763	107,443	106
AR	103,479	110,938	107	103,479	110,938	107
DE	14,579	12,668	87	14,579	12,668	87
FL	8,909	8,810	99	8,909	8,810	99
GA	110,320	114,081	103	110,320	114,081	103
MD	29,250	34,588	118	29,250	34,588	118
MS	66,276	70,502	106	66,276	70,502	106
NC	65,203	68,237	105	65,203	68,237	105
PA	12,585	13,264	105	12,585	13,264	105
SC	16,942	16,663	98	16,942	16,663	98
TX	53,193	56,341	106	53,193	56,341	106
VA	23,557	24,375	103	23,557	24,375	103
CA TN & WV	39,907	38,725	97	39,907	38,725	97
15 Sts ¹	645,963	676,635	105	645,963	676,635	105
Oth Sts ²	87,926	99,034	113	87,926	99,034	113
US	733,889	775,669	106	733,889	775,669	106

¹ States in the weekly hatchery production estimating program.

² Not published separately to avoid disclosing data for individual operations.

Broiler-Type Chicks Hatched: By Month, United States, 2000-02

Month	By Months				Cumulative			
	2000	2001	2002	2002 as % of 2001	2000	2001	2002	2002 as % of 2001
	<i>1,000</i>	<i>1,000</i>	<i>1,000</i>	<i>Percent</i>	<i>1,000</i>	<i>1,000</i>	<i>1,000</i>	<i>Percent</i>
Jan	751,599	733,889	775,669	106	751,599	733,889	775,669	106
Feb	703,466	670,498			1,455,065	1,404,387		
Mar	759,244	763,450			2,214,309	2,167,837		
Apr	746,830	745,304			2,961,139	2,913,141		
May	774,983	775,674			3,736,122	3,688,815		
Jun	747,327	756,556			4,483,449	4,445,371		
Jul	740,188	760,203			5,223,637	5,205,574		
Aug	740,890	761,233			5,964,527	5,966,807		
Sep	702,625	729,962			6,667,152	6,696,769		
Oct	711,278	739,733			7,378,430	7,436,502		
Nov	675,038	695,711			8,053,468	8,132,213		
Dec	738,664	769,419			8,792,132	8,901,632		

**Intended Placements: Broiler-Type Pullet Chicks for Hatchery
Supply Flocks by Month and Total, 2000-02 ¹**

Month	Pullet Chicks Hatched			2002 as % of 2001	Cumulative Potential Placements Relative to Current Supply Flocks 7-15 Months Earlier ²		
	2000	2001	2002		2000	2001	2002
	<i>1,000</i>	<i>1,000</i>	<i>1,000</i>	<i>Percent</i>	<i>1,000</i>	<i>1,000</i>	<i>1,000</i>
US Place- ments							
Jan	6,861	6,685	6,660	100	64,139	63,304	60,750
Feb	7,001	6,748			64,344	62,493	60,382
Mar	7,310	6,752			64,697	62,797	60,771
Apr	6,764	6,398			64,663	62,267	60,989
May	7,435	7,117			64,725	62,100	61,008
Jun	6,829	6,822			64,827	62,204	61,521
Jul	6,310	6,326			64,542	61,323	61,346
Aug	7,288	7,494			64,365	61,244	61,608
Sep	6,469	6,647			63,630	60,557	
Oct	6,694	6,704			63,899	60,480	
Nov	7,105	7,261			63,575	60,568	
Dec	6,429	6,577			63,345	60,397	
Annual Total	82,495	81,531			770,751	739,734	
Total Place- ments ³							
Jan	8,069	7,615	8,084	106			
Feb	8,302	8,275					
Mar	8,798	8,325					
Apr	8,522	7,915					
May	8,917	8,647					
Jun	8,201	8,220					
Jul	7,621	7,687					
Aug	8,657	9,133					
Sep	8,042	8,047					
Oct	8,260	7,848					
Nov	8,702	9,017					
Dec	7,614	8,119					
Annual Total	99,705	98,848					

¹ Reported by leading breeders. Coverage may not be 100 percent. Includes expected pullet chicks from eggs sold during the preceding month at the rate of 125 pullet chicks per 30 dozen case of eggs.

² For Jan 2002, includes breeder pullet chicks hatched Oct 2000 through Jun 2001.

³ U.S. production of intended placements worldwide.

Procedures and Reliability

Data Sources: Primary data for the "**Chickens and Eggs**" report are from weekly and/or monthly questionnaires sent to producers. An attempt is made to collect information for layer and egg estimates from each known contractor and independent producer who has over 30,000 table egg layers. Coverage for operations with less than 30,000 table egg layers are estimated each month based on data reported in December. Approximately 900 contractors, independent egg producers, and started pullet operations are contacted each month. All known hatcheries, approximately 330, are contacted for information on a weekly and/or monthly basis.

Revisions: The previous month's estimates are subject to revision if late reports or corrected data indicates a different level. Additionally, revisions needed after the monthly report will be made at the end of the marketing year and published in the annual summaries of "**Chickens and Eggs Summary**" and "**Hatchery Production**".

Procedures and Reliability: Operations are mailed a questionnaire and given adequate time to respond by mail. Those that do not respond are phoned. Great care is exercised to ensure that all operations are accounted for during each survey period. However, there are usually missing reports that must be accounted for in the estimates.

Sound statistical methodology is employed to derive estimates from the reported data. All data are checked for unusual values. All operations' data are compared to their own past operating profiles and also to trends from other operations. Data for missing operations are estimated based on similar operations or historical data. Survey data are subject to non-sampling errors such as omissions and mistakes in reporting and in processing. While these errors cannot be measured directly, they are minimized by reviewing all data for consistency and reasonableness.

Egg-type chicks hatched are comprised of all chicks of egg-type domesticated breeds including males and chicks destined for hatchery supply flocks and research purposes. The relationship of chicks hatched to chicken inventory and poultry marketings is carefully monitored. The disposition of egg-type chicks hatched prior to placement into the laying flock can vary significantly, which can make comparisons to changes in layer inventory inconsistent over time.

Intended placement data reported by leading breeders include pullet chicks expected from eggs sold the preceding month. The breeders in this report account for a large percentage of replacement pullets for hatchery supply flocks. Production of replacement pullets by these breeders indicates the number of pullets available to hatchery supply flocks several months before the pullets will actually move into the flocks. "Hatchery Supply Flocks" include all generations of layers which could lay eggs to supply a hatchery. This includes the generations of parents, grandparents, great-grandparents, pedigree, etc. Also included are research flocks, vaccine flocks, and specific pathogen-free flocks. The broiler cumulative potential placements are a moving total of the intended placements 7-15 months earlier. The egg-type cumulative potential placements of 7-18 months represent the first laying cycle. Molting and additional laying cycles will increase the cumulative potential placements of egg-type hatching flocks. On October 22, 2001 the intended placements of egg-type hatchery supply flocks were revised based on updated reported data. Revisions to the intended placements from January 2000 through March 2001 changed the cumulative potential placements from August 2000 forward.

The next "Chickens and Eggs" report will be released at 3 p.m. ET on March 22, 2002.

The United States Department of Agriculture (USDA) prohibits discrimination in all its programs on the basis of race, color, national origin, gender, religion, age, disability, political beliefs, sexual orientation, and marital or family status. (Not all prohibited bases apply to all programs.) Persons with disabilities who require alternative means for communication of program information (braille, large print, audiotape, etc.) should contact the USDA's TARGET Center at 202-720-2600 (voice and TDD).

To file a complaint of discrimination, write USDA, Director, Office of Civil Rights, Room 326-W, Whitten Building, 1400 Independence Avenue, SW, Washington, D.C., 20250-9410, or call 202-720-5964 (voice or TDD). USDA is an equal opportunity provider and employer.

ACCESS TO REPORTS!!

For your convenience, there are several ways to obtain NASS reports, data products, and services:

INTERNET ACCESS

All NASS reports are available free of charge on the worldwide Internet. For access, connect to the Internet and go to the NASS Home Page at: <http://www.usda.gov/nass/>. Select "Today's Reports" or Publications and then Reports by Calendar or Publications and then Search, by Title or Subject.

E-MAIL SUBSCRIPTION

There are two options for subscribing via e-mail. All NASS reports are available by subscription free of charge direct to your e-mail address. 1) Starting with the NASS Home Page at <http://www.usda.gov/nass/>, click on **Publications**, then click on the **Subscribe by E-mail** button which takes you to the page describing e-mail delivery of reports. Finally, click on **Go to the Subscription Page** and follow the instructions. 2) If you do NOT have Internet access, send an e-mail message to: usda-reports@usda.mannlib.cornell.edu. In the body of the message type the word: **list**.

AUTOFAX ACCESS

NASSFax service is available for some reports from your fax machine. Please call 202-720-2000, using the handset attached to your fax. Respond to the voice prompts. Document 0411 is a list of available reports.

PRINTED REPORTS OR DATA PRODUCTS

CALL OUR TOLL-FREE ORDER DESK: 800-999-6779 (U.S. and Canada)
Other areas, please call 703-605-6220 FAX: 703-605-6900
(Visa, MasterCard, check, or money order acceptable for payment.)

ASSISTANCE

For **assistance** with general agricultural statistics or further information about NASS or its products or services, contact the **Agricultural Statistics Hotline** at **800-727-9540**, 7:30 a.m. to 4:00 p.m. ET, or e-mail: nass@nass.usda.gov.
