

Chickens and Eggs

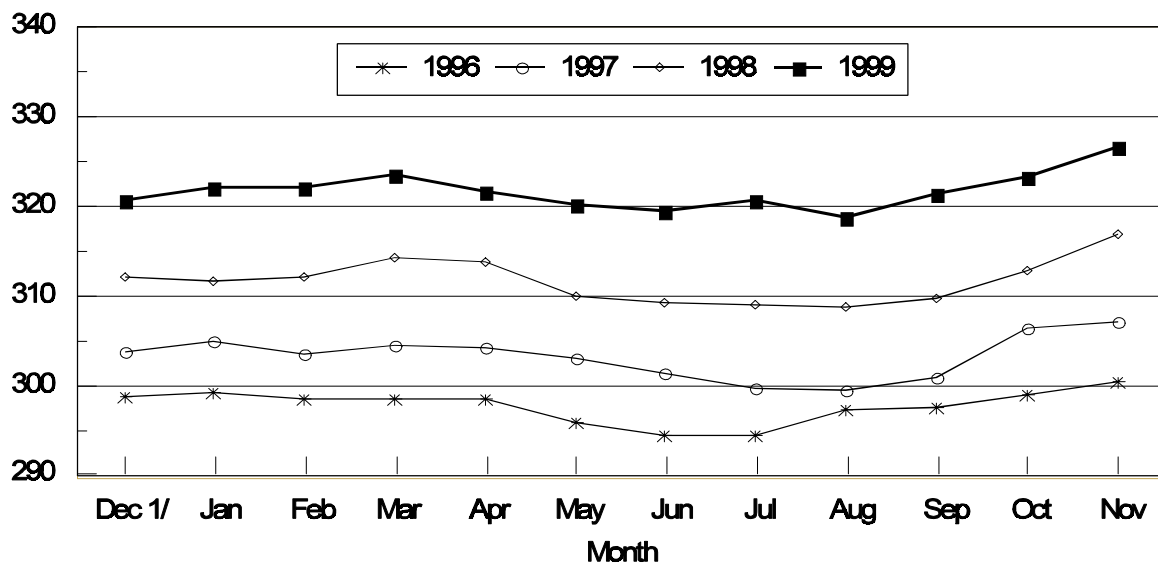
Released November 23, 1999, by the National Agricultural Statistics Service (NASS), Agricultural Statistics Board, U.S. Department of Agriculture. For information on "Chickens and Eggs" call Tom Kruchten at (202) 690-4870, office hours 7:30 a.m. to 4:00 p.m. ET.

October Egg Production Up 5 Percent

U.S. egg production totaled 7.13 billion during October 1999, up 5 percent from the 6.79 billion produced in 1998. Production included 6.03 billion table eggs and 1.09 billion hatching eggs, of which 1.03 billion were broiler-type and 63.0 million were egg-type. The total number of layers during October 1999 averaged 327 million, up 3 percent from the total average number of layers during October 1998. October egg production per 100 layers was 2,192 eggs, up 2 percent from 2,157 eggs in October 1998.

All Layers: 1st of Month United States , 1996 - 1999

Million Layers



1/ Previous Year

-Special Note-

Effective January 2000, the annual summary title will change from "Layers and Egg Production Summary" to "Chickens and Eggs Summary."

All layers in the U.S. on November 1, 1999, totaled 327 million, up 3 percent from a year ago. The 327 million layers consisted of 268 million layers producing table or commercial type eggs, 55.7 million layers producing broiler-type hatching eggs, and 2.64 million layers producing egg-type hatching eggs. Rate of lay per day on November 1, 1999, averaged 70.4 eggs per 100 layers, up 1 percent from the 69.6 a year ago.

Laying flocks in the 30 major egg producing States produced 6.69 billion eggs during October, up 4 percent from October 1998. The average number of layers during October, at 306 million, was up 3 percent from a year earlier.

Individual State estimates are available for the 30 major egg producing States. These States are listed on page 8 of this release and account for approximately 94 percent of the total U.S. egg production. Production for the other States are grouped into an "Other States" category and combined with the 30 States published individually to obtain a U.S. estimate. Individual State estimates for "Other States" are available annually in the "**Chickens and Eggs Summary**" report.

Egg-Type Chicks Hatched Up 11 Percent

Egg-type chicks **hatched** during October totaled 38.6 million, up 11 percent from October 1998. **Eggs in incubators** totaled 31.1 million on November 1, 1999, up 2 percent from a year ago.

Domestic placements of **egg-type pullet chicks for future hatchery supply flocks** by leading breeders totaled 254,000 during October 1999, down 29 percent from October 1998.

Broiler Hatch Up 1 Percent

The October 1999 **hatch** of broiler-type chicks, at 698 million, was up 1 percent from October of the previous year. There were 574 million **eggs in incubators** on November 1, 1999, down 1 percent from a year earlier.

Leading breeders placed 7.12 million **broiler-type pullet chicks for future domestic hatchery supply flocks** during October 1999, up 3 percent from October 1998.

**All Layers: Average Number on Hand During the Month,
United States, 1996-99**

Month	1996	1997	1998	1999
	<i>1,000 Layers</i>	<i>1,000 Layers</i>	<i>1,000 Layers</i>	<i>1,000 Layers</i>
Dec ¹	299,345	304,463	311,888	321,193
Jan	299,230	304,289	311,876	322,136
Feb	298,904	304,000	313,245	322,754
Mar	298,853	304,285	314,101	322,516
Apr	297,493	303,618	311,917	320,917
May	295,516	302,241	309,615	319,851
Jun	294,837	300,537	309,166	320,091
Jul	296,290	299,605	308,927	319,791
Aug	297,804	300,211	309,251	320,166
Sep	298,582	303,661	311,278	322,394
Oct	300,052	306,807	314,847	325,069
Nov	302,386	309,670	318,797	

¹ December preceding year.

**Eggs: Production During the Month by Type,
United States, 1998-99**

Month	Total Eggs		Table Eggs		Hatching Eggs	
	1998	1999	1998	1999	1998	1999
	<i>Million Eggs</i>	<i>Million Eggs</i>	<i>Million Eggs</i>	<i>Million Eggs</i>	<i>Million Eggs</i>	<i>Million Eggs</i>
Dec ¹	6,841	7,029	5,802	5,957	1,039	1,072
Jan	6,766	6,971	5,720	5,890	1,046	1,081
Feb	6,109	6,282	5,150	5,296	959	986
Mar	6,869	7,043	5,797	5,934	1,072	1,109
Apr	6,603	6,769	5,556	5,693	1,047	1,076
May	6,665	6,925	5,584	5,808	1,081	1,117
Jun	6,456	6,734	5,433	5,644	1,023	1,090
Jul	6,720	6,903	5,674	5,797	1,046	1,106
Aug	6,694	6,970	5,655	5,875	1,039	1,095
Sep	6,480	6,860	5,480	5,797	1,000	1,063
Oct	6,791	7,126	5,746	6,032	1,045	1,094
Nov	6,723		5,695		1,028	
During Year	79,717	75,612	67,292	63,723	12,425	11,889

¹ December preceding year.

**Layers and Eggs: Layers on Hand and Eggs Produced by Type,
and Forced Molt, United States, September-October 1998-99 ¹**

Item	Unit	1998	1999	1999 as % of 1998
Layers During Sep	1,000			
All Layers		311,278	322,394	104
Table Egg Type		254,597	264,136	104
Hatching Egg Type		56,681	58,258	103
Broiler-Type Hatching		54,162	55,554	103
Egg-Type Hatching		2,519	2,704	107
Eggs per 100 Layers During Sep	Number			
All Layers		2,082	2,128	102
Table Egg Type		2,152	2,195	102
Hatching Egg Type		1,764	1,825	103
Broiler-Type Hatching		1,739	1,800	104
Egg-Type Hatching		2,303	2,256	98
Eggs Produced During Sep	Million			
All Layers		6,480	6,860	106
Table Egg Type		5,480	5,797	106
Hatching Egg Type		1,000	1,063	106
Broiler-Type Hatching		942	1,002	106
Egg-Type Hatching		58	61	105
Layers on Oct 1	1,000			
All Layers		312,807	323,365	103
Table Egg Type		256,295	265,367	104
Hatching Egg Type		56,512	57,998	103
Broiler-Type Hatching		54,027	55,283	102
Egg-Type Hatching		2,485	2,715	109
Eggs per 100 Layers on Oct 1	Number			
All Layers		69.3	70.6	102
Table Egg Type		71.6	72.8	102
Hatching Egg Type		59.0	60.7	103
Broiler-Type Hatching		58.1	60.0	103
Egg-Type Hatching		76.9	75.9	99
Forced Molt Layers on Oct 1	Percent			
Percent Being Molted		4.9	4.2	86
Percent with Molt Completed		21.9	22.8	104
Layers Sold for Slaughter During Sep	1,000	15,352	16,877	110
Layers Rendered, Died, Destroyed, Composted or Disappeared For Any Reason During Sep	1,000	3,251	3,608	111
Pullets Less Than 20 Weeks of Age, Oct 1	1,000	94,615	96,574	102
Pullets Added During Sep ²	1,000	22,146	22,123	100

¹ Revised.

² Pullet chicks one day old added to pullet flocks.

**Layers and Eggs: Layers on Hand and Eggs Produced by Type,
and Forced Molt, United States, October-November 1998-99**

Item	Unit	1998 ¹	1999	1999 as % of 1998
Layers During Oct	1,000			
All Layers		314,847	325,069	103
Table Egg Type		258,093	266,891	103
Hatching Egg Type		56,754	58,178	103
Broiler-Type Hatching		54,241	55,497	102
Egg-Type Hatching		2,513	2,681	107
Eggs per 100 Layers During Oct	Number			
All Layers		2,157	2,192	102
Table Egg Type		2,226	2,260	102
Hatching Egg Type		1,841	1,880	102
Broiler-Type Hatching		1,812	1,858	103
Egg-Type Hatching		2,388	2,350	98
Eggs Produced During Oct	Million			
All Layers		6,791	7,126	105
Table Egg Type		5,746	6,032	105
Hatching Egg Type		1,045	1,094	105
Broiler-Type Hatching		985	1,031	105
Egg-Type Hatching		60	63	105
Layers on Nov 1	1,000			
All Layers		316,840	326,728	103
Table Egg Type		259,866	268,393	103
Hatching Egg Type		56,974	58,335	102
Broiler-Type Hatching		54,442	55,697	102
Egg-Type Hatching		2,532	2,638	104
Eggs per 100 Layers on Nov 1	Number			
All Layers		69.6	70.4	101
Table Egg Type		71.8	72.6	101
Hatching Egg Type		59.4	60.5	102
Broiler-Type Hatching		58.6	59.8	102
Egg-Type Hatching		77.0	75.3	98
Forced Molt Layers, Nov 1	Percent			
Percent Being Molted		3.7	3.7	100
Percent with Molt Completed		21.8	23.0	106
Layers Sold for Slaughter During Oct	1,000	13,362	15,262	114
Layers Rendered, Died, Destroyed. Composted or Disappeared For Any Reason During Oct	1,000	3,240	3,305	102
Pullets Less Than 20 Weeks of Age, Nov 1	1,000	93,761	96,410	103
Pullets Added During Oct ²	1,000	20,561	22,837	111

¹ Revised.

² Pullet chicks one day old added to pullet flocks.

**Layers and Eggs: Layers on Hand and Eggs Produced by Type, and Forced
Molt, 30 Selected States, September-October, 1998-99^{1 2}**

Item	Unit	1998	1999	1999 as % of 1998
Layers During Sep	1,000			
All Layers		293,786	303,046	103
Table Egg Type		241,335	249,269	103
Hatching Egg Type		52,451	53,777	103
Broiler-Type Hatching		50,041	51,173	102
Egg-Type Hatching		2,410	2,604	108
Eggs per 100 Layers During Sep	Number			
All Layers		2,081	2,127	102
Table Egg Type		2,151	2,194	102
Hatching Egg Type		1,762	1,817	103
Broiler-Type Hatching		1,737	1,794	103
Egg-Type Hatching		2,282	2,266	99
Eggs Produced During Sep	Million			
All Layers		6,114	6,445	105
Table Egg Type		5,190	5,468	105
Hatching Egg Type		924	977	106
Broiler-Type Hatching		869	918	106
Egg-Type Hatching		55	59	107
Layers on Oct 1	1,000			
All Layers		295,458	303,856	103
Table Egg Type		243,152	250,275	103
Hatching Egg Type		52,306	53,581	102
Broiler-Type Hatching		49,921	50,963	102
Egg-Type Hatching		2,385	2,618	110
Eggs per 100 Layers on Oct 1	Number			
All Layers		69.3	70.6	102
Table Egg Type		71.5	72.8	102
Hatching Egg Type		59.0	60.4	102
Broiler-Type Hatching		58.1	59.6	103
Egg-Type Hatching		76.9	76.1	99
Forced Molt Layers on Oct 1	Percent			
Percent Being Molted		4.9	4.2	86
Percent with Molt Completed		21.7	22.9	106
Layers Sold for Slaughter During Sep	1,000	14,573	16,066	110
Layers Rendered, Died, Destroyed, Composted or Disappeared For Any Reason During Sep	1,000	3,106	3,443	111
Pullets Less Than 20 Weeks of Age, Oct 1	1,000	89,929	90,583	101
Pullets Added During Sep ³	1,000	21,585	20,782	96

¹ The 30 States are listed in the table on page 8.

² Revised.

³ Pullet chicks one day old added to pullet flocks.

**Layers and Eggs: Layers on Hand and Eggs Produced by Type, and Forced
Molt, 30 Selected States, October-November, 1998-99 ¹**

Item	Unit	1998 ²	1999	1999 as % of 1998
Layers During Oct	1,000			
All Layers		297,306	305,543	103
Table Egg Type		244,804	251,802	103
Hatching Egg Type		52,502	53,741	102
Broiler-Type Hatching		50,088	51,154	102
Egg-Type Hatching		2,414	2,587	107
Eggs per 100 Layers During Oct	1,000			
All Layers		2,158	2,189	101
Table Egg Type		2,226	2,257	101
Hatching Egg Type		1,840	1,874	102
Broiler-Type Hatching		1,813	1,849	102
Egg-Type Hatching		2,403	2,358	98
Eggs Produced During Oct	Million			
All Layers		6,415	6,689	104
Table Egg Type		5,449	5,682	104
Hatching Egg Type		966	1,007	104
Broiler-Type Hatching		908	946	104
Egg-Type Hatching		58	61	105
Layers on Nov 1	1,000			
All Layers		299,115	307,192	103
Table Egg Type		246,435	253,311	103
Hatching Egg Type		52,680	53,881	102
Broiler-Type Hatching		50,246	51,332	102
Egg-Type Hatching		2,434	2,549	105
Eggs per 100 Layers on Nov 1	Number			
All Layers		69.8	70.5	101
Table Egg Type		71.9	72.7	101
Hatching Egg Type		59.5	60.4	102
Broiler-Type Hatching		58.7	59.6	102
Egg-Type Hatching		77.0	75.6	98
Forced Molt Layers, Nov 1	Percent			
Percent Being Molting		3.7	3.7	100
Percent with Molt Completed		21.6	23.1	107
Layers Sold for Slaughter During Oct	1,000	12,872	14,430	112
Layers Rendered, Died, Destroyed, Composted or Disappeared For Any Reason During Oct	1,000	3,082	3,140	102
Pullets Less Than 20 Weeks of Age, Nov 1	1,000	89,256	90,244	101
Pullets Added During Oct ³	1,000	19,757	21,729	110

¹ The 30 States are listed in the table on page 8.

² Revised.

³ Pullet chicks one day old added to pullet flocks.

**Layers and Eggs: Layers on Hand and Eggs Produced by State
and United States, During September 1998-99**

State	Table Egg Layers in Flocks 30,000 and Above		All Layers ¹		Eggs per 100 for All Layers ¹	
	1998	1999 ²	1998	1999 ²	1998	1999 ²
	<i>1,000</i>	<i>1,000</i>	<i>1,000</i>	<i>1,000</i>	<i>Number</i>	<i>Number</i>
AL	4,381	3,487	11,088	10,711	1,831	1,858
AR	4,343	4,933	14,493	15,205	1,739	1,907
CA	24,581	24,692	25,283	25,396	2,136	2,170
CO	3,009	3,112	3,601	3,643	2,111	2,223
CT	2,734	2,863	2,897	3,039	2,278	2,205
FL	9,219	9,862	9,897	10,584	1,940	2,116
GA	11,795	11,406	20,974	20,689	1,940	2,020
HI	604	571	629	599	2,067	1,987
IL	2,686	3,371	2,962	3,640	2,161	2,308
IN	21,341	21,260	22,040	21,955	2,219	2,200
IA	22,383	25,293	23,265	26,258	2,102	2,236
ME	4,620	4,551	4,755	4,670	2,376	2,313
MD	2,881	2,648	3,303	2,992	2,119	2,072
MI	5,304	5,571	5,586	5,847	2,150	2,206
MN	11,323	11,738	12,033	12,416	2,186	2,102
MS	2,000	1,719	7,071	6,815	1,853	1,864
MO	5,510	4,800	6,915	6,205	2,126	2,192
NE	10,163	11,240	10,313	11,390	2,143	2,090
NY	3,220	3,391	3,448	3,659	2,291	2,268
NC	3,695	3,549	11,050	10,929	1,837	1,894
OH	27,293	30,086	27,865	30,739	2,168	2,193
OK	2,041	1,989	3,946	4,024	1,901	1,938
OR	2,526	2,690	2,687	2,844	2,084	2,141
PA	20,367	21,131	21,639	22,477	2,218	2,251
SC	3,532	3,772	4,544	4,790	2,113	2,150
SD	2,063	1,894	2,268	2,135	2,205	2,295
TX	13,117	13,176	16,791	17,169	2,067	2,114
VA	1,515	1,505	3,659	3,626	1,940	1,903
WA	4,942	4,635	5,062	4,755	2,260	2,259
WI	3,067	3,356	3,722	3,845	2,203	2,289
30 Sts	236,255	244,291	293,786	303,046	2,081	2,127
Oth Sts ³	12,140	13,818	17,492	19,348	2,092	2,145
US	248,395	258,109	311,278	322,394	2,082	2,128

¹ Includes all layers and eggs produced in both table egg and hatching egg flocks regardless of size.

² Revised.

³ Estimates for individual States are not available.

**Layers and Eggs: Layers on Hand and Eggs Produced by State
and United States, During October 1998-99**

State	Table Egg Layers in Flocks 30,000 and Above		All Layers ¹		Eggs per 100 for All Layers ¹	
	1998	1999	1998	1999	1998	1999
	<i>1,000</i>	<i>1,000</i>	<i>1,000</i>	<i>1,000</i>	<i>Number</i>	<i>Number</i>
AL	4,477	3,568	11,185	10,697	1,967	1,954
AR	4,296	4,917	14,434	15,340	1,864	1,949
CA	24,937	25,024	25,616	25,716	2,190	2,220
CO	3,057	3,155	3,618	3,678	2,266	2,365
CT	2,812	2,911	2,972	3,082	2,389	2,336
FL	9,397	10,041	10,086	10,739	2,072	2,207
GA	12,088	11,745	21,338	21,031	2,043	2,121
HI	606	565	632	594	2,057	2,037
IL	2,660	3,396	2,943	3,683	2,186	2,417
IN	21,289	21,360	21,949	22,038	2,273	2,246
IA	22,876	24,973	23,767	25,957	2,163	2,288
ME	4,779	4,490	4,900	4,623	2,449	2,379
MD	2,887	2,803	3,335	3,186	2,129	2,166
MI	5,345	5,822	5,621	6,226	2,243	2,152
MN	11,365	11,540	12,053	12,208	2,240	2,187
MS	2,180	1,770	7,133	6,881	1,949	1,933
MO	5,744	4,588	7,153	6,020	2,167	2,292
NE	10,179	11,427	10,329	11,577	2,227	2,159
NY	3,296	3,417	3,530	3,687	2,380	2,387
NC	3,701	3,686	11,112	11,114	1,944	1,943
OH	27,690	30,593	28,283	31,186	2,273	2,238
OK	2,031	1,954	3,972	3,931	2,039	2,010
OR	2,451	2,732	2,614	2,895	2,181	2,245
PA	20,982	21,508	22,274	22,809	2,267	2,315
SC	3,568	3,805	4,579	4,817	2,162	2,138
SD	2,050	1,908	2,253	2,137	2,264	2,340
TX	13,404	13,287	17,186	17,268	2,054	2,166
VA	1,643	1,595	3,714	3,543	1,966	2,032
WA	4,875	4,691	4,995	4,811	2,346	2,274
WI	3,083	3,593	3,730	4,069	2,279	2,335
30 Sts	239,748	246,864	297,306	305,543	2,158	2,189
Oth Sts ²	12,168	14,038	17,541	19,526	2,144	2,238
US	251,916	260,902	314,847	325,069	2,157	2,192

¹ Includes all layers and eggs produced in both table egg and hatching egg flocks regardless of size.

² Estimates for individual States are not available.

**Egg Production: By Type, State, and United States,
September 1998-99**

State	Total Production		Table Eggs ¹		Hatching Eggs ¹	
	1998	1999 ²	1998	1999 ²	1998	1999 ²
	<i>Million Eggs</i>	<i>Million Eggs</i>	<i>Million Eggs</i>	<i>Million Eggs</i>	<i>Million Eggs</i>	<i>Million Eggs</i>
AL	203	199	88	72	115	127
AR	252	290	83	105	169	185
CA	540	551				
CO	76	81				
CT	66	67				
FL	192	224	180	212	12	12
GA	407	418	239	242	168	176
HI	13.0	11.9	13.0	11.9	0	0
IL	64	84	60	81	4	3
IN	489	483	478	472	11	11
IA	489	587				
ME	113	108				
MD	70	62	63	56	7	6
MI	120	129				
MN	263	261	253	251	10	10
MS	131	127	45	38	86	89
MO	147	136				
NE	221	238	221	238	0	0
NY	79	83				
NC	203	207	81	82	122	125
OH	604	674				
OK	75	78	45	45	30	33
OR	56	61	55	60	1	1
PA	480	506	467	491	13	15
SC	96	103	79	86	17	17
SD	50	49	50	49	0	0
TX	347	363				
VA	71	69	34	33	37	36
WA	114	107				
WI	82	88				
30 Sts	6,114	6,445	5,190	5,468	924	977
Oth Sts ³	366	415	290	329	76	86
US	6,480	6,860	5,480	5,797	1,000	1,063

¹ Data by type of flock not shown for some States to avoid disclosing individual operations.

² Revised.

³ Estimates for individual States are not available.

**Egg Production: By Type, State, and United States,
October 1998-99**

State	Total Production		Table Eggs ¹		Hatching Eggs ¹	
	1998	1999	1998	1999	1998	1999
	<i>Million Eggs</i>	<i>Million Eggs</i>	<i>Million Eggs</i>	<i>Million Eggs</i>	<i>Million Eggs</i>	<i>Million Eggs</i>
AL	220	209	100	79	120	130
AR	269	299	92	109	177	190
CA	561	571				
CO	82	87				
CT	71	72				
FL	209	237	196	224	13	13
GA	436	446	261	261	175	185
HI	13.0	12.1	13.0	12.1	0	0
IL	65	89	61	85	4	4
IN	499	495	487	484	12	11
IA	514	594				
ME	120	110				
MD	71	69	64	63	7	6
MI	126	134				
MN	270	267	260	258	10	9
MS	139	133	48	40	91	93
MO	155	138				
NE	230	250	230	250	0	0
NY	84	88				
NC	216	216	88	89	128	127
OH	643	698				
OK	81	79	48	46	33	33
OR	57	65	56	64	1	1
PA	505	528	491	513	14	15
SC	99	103	81	85	18	18
SD	51	50	51	50	0	0
TX	353	374				
VA	73	72	37	37	36	35
WA	117	109				
WI	85	95				
30 Sts	6,415	6,689	5,449	5,682	966	1,007
Oth Sts ²	376	437	297	350	79	87
US	6,791	7,126	5,746	6,032	1,045	1,094

¹ Data by type of flock not shown for some States to avoid disclosing individual operations.

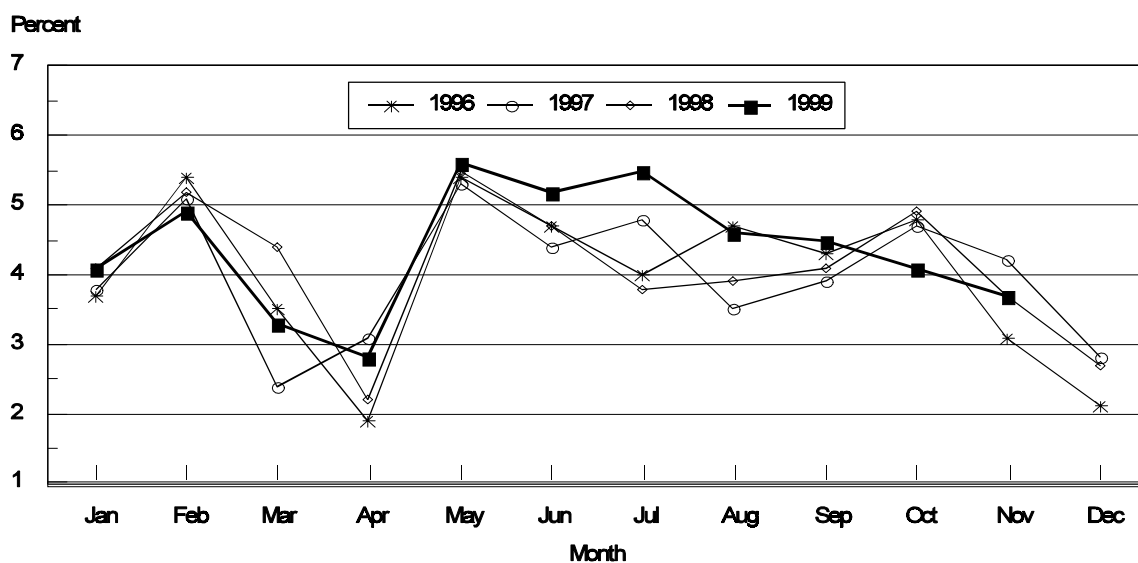
² Estimates for individual States are not available.

**Forced Molt: Percent of All Layers by Month,
United States, 1998-99 ¹**

Month	Percent Being Molted		Percent with Molt Completed	
	1998	1999	1998	1999
	<i>Percent</i>	<i>Percent</i>	<i>Percent</i>	<i>Percent</i>
Jan	4.1	4.1	21.8	22.5
Feb	5.2	4.9	21.0	22.1
Mar	4.4	3.3	21.2	21.8
Apr	2.2	2.8	22.1	21.7
May	5.5	5.6	20.0	21.8
Jun	4.8	5.2	21.4	21.9
Jul	3.9	5.5	21.6	22.1
Aug	3.9	4.6	21.7	23.0
Sep	4.1	4.3	21.9	22.2
Oct	4.9	4.2	21.9	22.8
Nov	3.7	3.7	21.8	23.0
Dec	2.7		23.9	

¹ As of first of month.

All Layers : United States
Percent Being Molted, 1996 - 1999
 First of Month



1/ Previous Year

**Forced Molt: Percent of All Layers by State
and United States, November 1998-99 ¹**

State	Percent Being Molted		Percent with Molt Completed	
	1998	1999	1998	1999
	<i>Percent</i>	<i>Percent</i>	<i>Percent</i>	<i>Percent</i>
AL	1.5	2.0	12.0	11.0
AR	1.5	2.5	6.5	9.5
CA	7.0	8.0	34.0	42.5
CO	3.5	0.0	35.0	26.0
CT	0.0	0.0	14.0	12.5
FL	6.5	4.5	33.0	41.0
GA	2.5	1.0	21.0	16.0
HI	5.5	6.0	42.0	41.0
IL	10.0	0.5	24.0	21.5
IN	3.5	5.0	32.5	26.5
IA	5.0	4.0	30.5	32.5
ME	0.0	0.0	1.5	0.0
MD	10.0	6.5	25.5	39.0
MI	3.5	2.5	20.5	22.0
MN	5.5	4.0	28.0	36.0
MS	5.0	1.0	6.0	12.5
MO	0.0	3.0	19.0	26.0
NE	1.0	7.5	20.0	27.5
NY	0.0	0.0	6.0	3.5
NC	2.5	2.0	8.5	8.0
OH	2.5	3.0	13.5	12.5
OK	1.0	3.5	10.5	8.0
OR	0.0	4.0	48.5	35.5
PA	4.0	6.0	16.0	20.0
SC	5.5	6.5	30.0	25.5
SD	3.5	2.5	27.0	31.0
TX	5.0	2.0	20.5	23.0
VA	3.0	1.0	13.0	14.0
WA	4.5	5.5	34.0	42.5
WI	2.0	2.5	34.0	20.5
30 Sts	3.7	3.7	21.6	23.1
Oth Sts ²	3.3	2.9	24.9	22.1
US	3.7	3.7	21.8	23.0

¹ As of first of month.

² Estimates for individual States are not available.

**Hatchery Production: Eggs in Incubators, Chicks Hatched,
and Placements by Type, United States, October-November 1998-99**

Item	1998	1999	1999 as % of 1998
	<i>1,000</i>	<i>1,000</i>	<i>Percent</i>
Egg-Type			
Eggs in Incubators on Nov 1	30,435	31,106	102
Chicks Hatched During Oct	34,649	38,559	111
Chicks Hatched Jan thru Oct	371,409	382,950	103
Pullets Hatched During Oct for Intended			
Placements in Hatchery Supply Flocks	358	254	71
7-18 Month Earlier ¹	2,993	3,134	105
Broiler-Type			
Eggs in Incubators on Nov 1	578,772	573,510	99
Chicks Hatched During Oct	693,189	697,787	101
Chicks Hatched Jan thru Oct	7,079,250	7,286,465	103
Pullets Hatched During Oct for Intended			
Placements in Hatchery Supply Flocks	6,883	7,121	103
7-15 Months Earlier ²	59,088	63,460	107

¹ 1999 includes pullet chicks hatched Apr 1998 through Mar 1999.

² 1999 includes pullet chicks hatched Jul 1998 through Mar 1999.

**Egg-Type Eggs in Incubators: By Region and United States,
November 1, 1998-99**

Geographic Division	1998	1999	1999 as % of 1998
	<i>1,000</i>	<i>1,000</i>	<i>Percent</i>
North Atlantic	6,139	5,527	90
E North Central	8,144	8,408	103
W North Central	6,536	5,815	89
South Atlantic	3,866	3,141	81
South Central	2,781	3,724	134
West	2,969	4,491	151
US	30,435	31,106	102

Regional Listing:

North Atlantic = CT, ME, MA, NH, NJ, NY, PA, RI, VT.

E North Central = IL, IN, MI, OH, WI.

W North Central = IA, KS, MN, MO, NE, ND, SD.

South Atlantic = DE, FL, GA, MD, NC, SC, VA, WV.

South Central = AL, AR, KY, LA, MS, OK, TN, TX.

West = AK, AZ, CA, CO, HI, ID, MT, NM, NV, OR, UT, WA, WY.

**Egg-Type Chicks Hatched: By State and United States,
October 1998-99**

State	October			Jan-Oct		
	1998	1999	1999 as % of 1998	1998	1999	1999 as % of 1998
	<i>1,000</i>	<i>1,000</i>	<i>Percent</i>	<i>1,000</i>	<i>1,000</i>	<i>Percent</i>
AR	467	819	175	7,869	8,207	104
FL	953	1,084	114	10,447	10,961	105
GA	1,740	2,044	117	20,326	19,651	97
IN	6,897	7,083	103	70,545	71,107	101
IA	4,745	4,473	94	44,026	48,408	110
KS	152	194	128	2,355	3,061	130
MN	1,961	1,828	93	18,673	18,280	98
MO	306	306	100	3,421	3,456	101
PA	5,354	6,490	121	53,560	55,621	104
Oth Sts ¹	12,074	14,238	118	140,187	144,198	103
US	34,649	38,559	111	371,409	382,950	103

¹ Not published separately to avoid disclosing data for individual operations.

Egg-Type Chicks Hatched: By Month, United States, 1997-99

Month	By Months				Cumulative			
	1997	1998	1999	1999 as % of 1998	1997	1998	1999	1999 as % of 1998
	<i>1,000</i>	<i>1,000</i>	<i>1,000</i>	<i>Percent</i>	<i>1,000</i>	<i>1,000</i>	<i>1,000</i>	<i>Percent</i>
Jan	33,752	37,159	35,653	96	33,752	37,159	35,653	96
Feb	35,655	34,593	35,648	103	69,407	71,752	71,301	99
Mar	37,347	40,590	41,325	102	106,754	112,342	112,626	100
Apr	38,842	39,043	42,043	108	145,596	151,385	154,669	102
May	39,020	39,192	40,590	104	184,616	190,577	195,259	102
Jun	36,796	39,302	40,569	103	221,412	229,879	235,828	103
Jul	33,772	35,558	34,269	96	255,184	265,437	270,097	102
Aug	33,061	33,380	35,453	106	288,245	298,817	305,550	102
Sep	37,118	37,943	38,841	102	325,363	336,760	344,391	102
Oct	35,262	34,649	38,559	111	360,625	371,409	382,950	103
Nov	28,122	31,251			388,747	402,660		
Dec	35,796	35,733			424,543	438,393		

**Intended Placements: Egg-Type Pullet Chicks for Hatchery Supply
Flocks by Month and Total, United States, 1997-99 ¹**

Month	Pullet Chicks Hatched			1999 as % of 1998	Cumulative Potential Placements Relative to Current Supply Flocks 7-18 Months Earlier ²		
	1997	1998	1999		1998	1999	2000
	<i>1,000</i>	<i>1,000</i>	<i>1,000</i>	<i>Percent</i>	<i>1,000</i>	<i>1,000</i>	<i>1,000</i>
Jan	208	189	166	88	2,823	3,029	3,012
Feb	222	250	267	107	2,764	3,120	2,945
Mar	209	225	257	114	2,863	3,020	3,078
Apr	316	333	287	86	3,034	2,942	2,981
May	273	192	283	147	3,057	3,044	2,877
Jun	254	354	187	53	2,976	3,132	
Jul	207	298	231	78	2,968	3,108	
Aug	285	185	318	172	2,949	3,085	
Sep	402	324	227	70	2,977	3,102	
Oct	256	358	254	71	2,993	3,134	
Nov	129	217			3,010	3,088	
Dec	207	183			2,929	3,179	
Total	2,968	3,108					

¹ Reported by leading breeders. Coverage may not be 100 percent. Includes expected pullet chicks from eggs sold during the preceding month at the rate of 125 pullet chicks per 30 dozen case of eggs.

² For October 1999, includes breeder pullet chicks hatched Apr 1998 through Mar 1999. The 7-18 months represent the first laying cycle. Molting and additional laying cycles will increase the cumulative potential placements.

**Broiler-Type Eggs in Incubators: By Region
and United States, November 1, 1998-99**

Geographic Division	1998	1999	1999 as % of 1998
	<i>1,000</i>	<i>1,000</i>	<i>Percent</i>
North Atlantic	11,026	10,389	94
E North Central	8,280	7,563	91
W North Central	20,233	18,372	91
South Atlantic	222,066	219,439	99
South Central	294,339	295,249	100
West	22,828	22,498	99
US	578,772	573,510	99

**Broiler-Type Chicks Hatched: By State
and United States, October 1998-99**

State	October			Jan-Oct		
	1998	1999	1999 as % of 1998	1998	1999	1999 as % of 1998
	<i>1,000</i>	<i>1,000</i>	<i>Percent</i>	<i>1,000</i>	<i>1,000</i>	<i>Percent</i>
AL	91,013	92,854	102	920,665	955,343	104
AR	102,425	102,922	100	1,035,918	1,068,603	103
DE	14,941	14,503	97	158,409	157,137	99
FL	9,213	9,169	100	93,037	96,526	104
GA	108,110	105,417	98	1,072,062	1,097,878	102
MD	30,951	27,476	89	309,937	304,033	98
MS	60,092	62,322	104	626,383	640,067	102
NC	56,147	59,962	107	603,449	626,083	104
PA	12,317	11,944	97	126,621	127,181	100
SC	15,715	16,124	103	148,772	163,061	110
TX	45,769	48,337	106	451,607	478,980	106
VA	22,295	21,568	97	234,634	236,323	101
CA TN & WV	35,685	36,765	103	381,234	396,750	104
15 Sts ¹	604,673	609,363	101	6,162,728	6,347,965	103
Oth Sts ²	88,516	88,424	100	916,522	938,500	102
US	693,189	697,787	101	7,079,250	7,286,465	103

¹ States in the weekly hatchery production estimating program.

² Not published separately to avoid disclosing data for individual operations.

Broiler Chicks Hatched: By Month, United States, 1997-99

Month	By Months				Cumulative			
	1997	1998	1999	1999 as % of 1998	1997	1998	1999	1999 as % of 1998
	<i>1,000</i>	<i>1,000</i>	<i>1,000</i>	<i>Percent</i>	<i>1,000</i>	<i>1,000</i>	<i>1,000</i>	<i>Percent</i>
Jan	699,952	711,373	735,348	103	699,952	711,373	735,348	103
Feb	634,142	645,180	661,739	103	1,334,094	1,356,553	1,397,087	103
Mar	718,413	730,316	755,179	103	2,052,507	2,086,869	2,152,266	103
Apr	693,717	708,260	734,340	104	2,746,224	2,795,129	2,886,606	103
May	724,679	739,319	766,161	104	3,470,903	3,534,448	3,652,767	103
Jun	704,247	717,967	744,447	104	4,175,150	4,252,415	4,397,214	103
Jul	710,622	722,715	750,547	104	4,885,772	4,975,130	5,147,761	103
Aug	708,572	715,650	741,253	104	5,594,344	5,690,780	5,889,014	103
Sep	684,156	695,281	699,664	101	6,278,500	6,386,061	6,588,678	103
Oct	683,185	693,189	697,787	101	6,961,685	7,079,250	7,286,465	103
Nov	648,141	678,003			7,609,826	7,757,253		
Dec	711,808	737,840			8,321,634	8,495,093		

**Intended Placements: Broiler-Type Pullet Chicks for Hatchery
Supply Flocks by Month and Total, 1997-99 ¹**

Month	Pullet Chicks Hatched			1999 as % of 1998	Cumulative Potential Placements Relative to Current Supply Flocks 7-15 Months Earlier ²		
	1997	1998	1999		1998	1999	2000
	<i>1,000</i>	<i>1,000</i>	<i>1,000</i>	<i>Percent</i>	<i>1,000</i>	<i>1,000</i>	<i>1,000</i>
US Place- ments							
Jan	6,397	6,765	7,059	104	56,552	59,403	64,050
Feb	5,916	6,328	6,882	109	57,494	59,937	64,255
Mar	6,443	6,776	7,195	106	57,677	60,699	64,608
Apr	6,036	6,687	7,038	105	58,228	61,775	64,574
May	7,062	7,062	7,736	110	58,085	61,893	64,636
Jun	6,008	6,932	7,041	102	58,516	62,877	
Jul	7,167	6,788	7,088	104	58,325	63,005	
Aug	6,697	7,109	7,665	108	59,054	63,377	
Sep	6,502	7,328	6,870	94	58,320	63,197	
Oct	6,254	6,883	7,121	103	59,088	63,460	
Nov	6,347	7,312			58,608	63,710	
Dec	6,252	6,904			58,973	64,337	
Annual Total	77,081	82,874					
Total Place- ments ³							
Jan	7,547	8,613	8,679	101			
Feb	7,122	8,273	8,473	102			
Mar	7,894	8,760	8,863	101			
Apr	7,238	8,300	8,572	103			
May	8,505	8,957	9,463	106			
Jun	7,381	8,757	8,333	95			
Jul	8,460	8,423	8,342	99			
Aug	8,132	8,686	8,983	103			
Sep	8,092	8,985	8,044	90			
Oct	8,142	8,756	8,223	94			
Nov	7,973	9,412					
Dec	8,237	8,830					
Annual Total	94,723	104,752					

¹ Reported by leading breeders. Coverage may not be 100 percent. Includes expected pullet chicks from eggs sold during the preceding month at the rate of 125 pullet chicks per 30 dozen case of eggs.

² For Oct 1999, includes breeder pullet chicks hatched Jul 1998 through Mar 1999.

³ U.S. production of intended placements worldwide.

Procedures and Reliability

Data Sources: Primary data for the "**Chickens and Eggs**" report are from weekly and/or monthly questionnaires sent to producers. An attempt is made to collect information for layer and egg estimates from each known contractor and independent producer who has over 30,000 table egg layers. Coverage for operations with less than 30,000 table egg layers are estimated each month based on data reported in December. Approximately 900 contractors, independent egg producers, and started pullet operations are contacted each month. All known hatcheries, approximately 360, are contacted for information on a weekly and/or monthly basis.

Revisions: The previous month's estimates are subject to revision if late reports or corrected data indicates a different level. Additionally, revisions needed after the monthly report will be made at the end of the marketing year and published in the annual summaries of "**Chickens and Eggs Summary**" and "**Hatchery Production**".

Procedures and Reliability: Operations are mailed a questionnaire and given adequate time to respond by mail. Those that do not respond are phoned. Great care is exercised to ensure that all operations are accounted for during each survey period. However, there are usually missing reports that must be accounted for in the estimates.

Sound statistical methodology is employed to derive estimates from the reported data. All data are checked for unusual values. All operations' data are compared to their own past operating profiles and also to trends from other operations. Data for missing operations are estimated based on similar operations or historical data. Survey data are subject to non-sampling errors such as omissions and mistakes in reporting and in processing. While these errors cannot be measured directly, they are minimized by reviewing all data for consistency and reasonableness.

Egg-type chicks hatched are comprised of all chicks of egg-type domesticated breeds including males and chicks destined for hatchery supply flocks and research purposes. The relationship of chicks hatched to chicken inventory and poultry marketings is carefully monitored. The disposition of egg-type chicks hatched prior to placement into the laying flock can vary significantly, which can make comparisons to changes in layer inventory inconsistent over time.

Intended placement data reported by leading breeders include pullet chicks expected from eggs sold the preceding month. The breeders in this report account for a large percentage of replacement pullets for hatchery supply flocks. Production of replacement pullets by these breeders indicates the number of pullets available to hatchery egg supply flocks several months before the pullets will actually move into the flocks. Beginning with the January 1996 publication the broiler-type cumulative potential placements went from 7-14 months earlier to 7-15 months earlier. The egg-type cumulative potential placements of 7-18 months represent the first laying cycle. Molting and additional laying cycles will increase the cumulative potential placements of egg-type hatching flocks.

The next "Chickens and Eggs" report will be released at 3 p.m. ET on December 21, 1999.

The United States Department of Agriculture (USDA) prohibits discrimination in all its programs on the basis of race, color, national origin, gender, religion, age, disability, political beliefs, sexual orientation, and marital or family status. (Not all prohibited bases apply to all programs.) Persons with disabilities who require alternative means for communication of program information (braille, large print, audiotape, etc.) should contact the USDA's TARGET Center at 202-720-2600 (voice and TDD).

To file a complaint of discrimination, write USDA, Director, Office of Civil Rights, Room 326-W, Whitten Building, 14th and Independence Avenue, SW, Washington, D.C., 20250-9410, or call 202-720-5964 (voice or TDD). USDA is an equal opportunity provider and employer.

ACCESS TO REPORTS!!

For your convenience, there are several ways to obtain NASS reports, data products, and services:

INTERNET ACCESS

All NASS reports are available free of charge on the worldwide Internet. For access, connect to the Internet and go to the NASS Home Page at: <http://www.usda.gov/nass/>. Select "Today's Reports" or Publications and then Reports by Calendar or Publications and then Search, by Title or Subject.

E-MAIL SUBSCRIPTION

There are two options for subscribing via e-mail. All NASS reports are available by subscription free of charge direct to your e-mail address. 1) Starting with the NASS Home Page at <http://www.usda.gov/nass/>, click on **Publications**, then click on the **Subscribe by E-mail** button which takes you to the page describing e-mail delivery of reports. Finally, click on **Go to the Subscription Page** and follow the instructions. 2) If you do NOT have Internet access, send an e-mail message to: usda-reports@usda.mannlib.cornell.edu. In the body of the message type the word: **list**.

AUTOFAX ACCESS

NASSFax service is available for some reports from your fax machine. Please call 202-720-2000, using the handset attached to your fax. Respond to the voice prompts. Document 0411 is a list of available reports.

----- PRINTED REPORTS OR DATA PRODUCTS

CALL OUR TOLL-FREE ORDER DESK: 800-999-6779 (U.S. and Canada)
Other areas, please call 703-834-0125 FAX: 703-834-0110
(Visa, MasterCard, check, or money order acceptable for payment.)

ASSISTANCE

For **assistance** with general agricultural statistics or further information about NASS or its products or services, contact the **Agricultural Statistics Hotline** at **800-727-9540**, 7:30 a.m. to 4:00 p.m. ET, or e-mail: nass@nass.usda.gov.