

# Chickens and Eggs



National  
Agricultural  
Statistics  
Service

United States  
Department of  
Agriculture

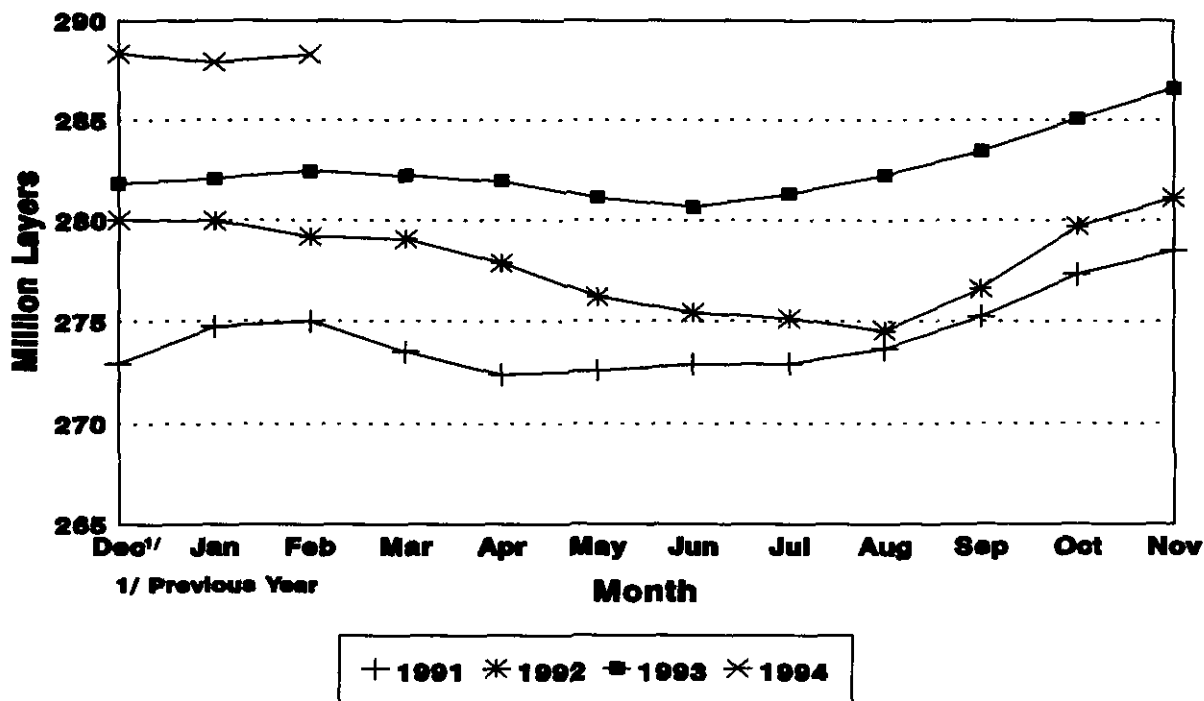
Washington, D.C.

Released March 24, 1994, by the Agricultural Statistics Board. Estimates refer to January, February, and March 1994.

## February Egg Production Up 2 Percent

U.S. egg production totaled 5.56 billion during February 1994, up 2 percent from the 5.43 billion produced a year ago. Production included 4.74 billion table eggs, 764 million broiler-type hatching eggs, and 58.0 million egg-type hatching eggs. The total number of layers during February 1994 averaged 288 million, up 2 percent from the 282 million a year ago. February egg production per 100 layers was 1,928 eggs, compared with 1,923 in February 1993.

## Average Number of Layers United States, 1991 - 94



For information call Robert E. Little at (202) 720-6147. Office hours are 8:00 a.m. to 4:30 p.m. ET.

All layers in the U.S. on March 1, 1994, totaled 289 million, compared with 282 million a year ago. The 289 million layers consisted of 239 million layers producing table or commercial type eggs, 47.0 million layers producing broiler-type hatching eggs, and 2.86 million layers producing egg-type hatching eggs. Rate of lay per day on March 1, 1994, averaged 69.6 eggs per 100 layers, up fractionally from last year's 69.4 eggs per 100 layers.

Laying flocks in the 30 major egg production States produced 5.25 billion eggs during February. The number of layers during February averaged 272 million.

Individual State estimates are available for the 30 major egg producing States. These States are listed on page 8 of this release and account for approximately 94 percent of the total U.S. egg production. Production for the other States are grouped into an "Other States" category and combined with the 30 States, published individually, to obtain a U.S. estimate. Individual State estimates for "Other States" are available annually in the "Layers and Egg Production" report.

#### **Egg-Type Chicks Hatched Down 8 Percent**

Egg-type chicks **hatched** during February totaled 31.1 million, down 8 percent from February 1993. **Eggs in incubators** totaled 28.5 million on March 1, 1994, down 20 percent from a year ago.

Domestic placements of **egg-type pullet chicks for hatchery supply flocks** by leading breeders totaled 186,000 during February 1994, up 56 percent from the 119,000 of February 1993.

#### **Broiler Hatch Up 4 Percent**

The February 1994 **hatch** of broiler-type chicks, at 558 million, was 4 percent above February of the previous year. There were 521 million **eggs in incubators** on March 1, 1994, up 5 percent from a year earlier.

Leading breeders placed 5.52 million **broiler-type pullet chicks in domestic hatchery supply flocks** during February 1994, up 21 percent from February 1993.

**For information call Tom Kruchten at (202) 690-4870**

Layers: Average Number During the Month.  
United States, 1991-1994 1/

Month :	1991	:	1992	:	1993	:	1994
1,000 Layers							
Dec <u>2/</u>	272,902		280,028		281,847		288,547
Jan	274,738		279,996		282,098		287,930
Feb	275,002		279,208		282,481		288,309
Mar	273,511		279,071		282,255		
Apr	272,356		277,894		281,984		
May	272,558		276,212		281,145		
Jun	272,875		275,422		280,664		
Jul	272,897		275,144		281,324		
Aug	273,651		274,562		282,286		
Sep	275,241		276,634		283,442		
Oct	277,324		279,720		285,048		
Nov	278,519		281,119		286,544		

1/ Data are for chart on cover page.

2/ December preceding year.

Eggs and Layers: Layers on Hand and Eggs Produced by Type,  
and Forced Molt, United States, January-February 1993-94

Item	1993	1994 <sup>1/</sup>	1994 as % of 1993
Layers During Jan (1,000)			
All Layers	282,098	287,930	102
Table Egg Type	236,613	238,587	101
Hatching Egg Type	45,485	49,343	108
Broiler-Type Hatching	42,648	46,528	109
Egg-Type Hatching	2,837	2,815	99
Eggs per 100 Layers During Jan (Number)			
All Layers	2,138	2,131	100
Table Egg Type	2,192	2,198	100
Hatching Egg Type	1,853	1,808	98
Broiler-Type Hatching	1,831	1,788	98
Egg-Type Hatching	2,185	2,131	98
Eggs Produced During Jan (Million)			
All Layers	6.030	6.137	102
Table Egg Type	5,187	5,245	101
Hatching Egg Type	843	892	106
Broilers-Type Hatching	781	832	107
Egg-Type Hatching	62	60	97
Layers on Feb 1 (1,000)			
All Layers	282,933	287,767	102
Table Egg Type	236,942	238,235	101
Hatching Egg Type	45,991	49,532	108
Broiler-Type Hatching	43,106	46,723	108
Egg-Type Hatching	2,885	2,809	97
Eggs per 100 Layers on Feb 1 (Number)			
All Layers	68.2	68.1	100
Table Egg Type	69.9	70.1	100
Hatching Egg Type	59.5	58.6	98
Broiler-Type Hatching	58.8	57.7	98
Egg-Type Hatching	71.2	73.0	103
Forced Molt Layers, Feb 1			
Percent Being Molting	<sup>2/</sup>	5.4	
Percent with Molt Completed	<sup>2/</sup>	21.2	

<sup>1/</sup> Revised.

<sup>2/</sup> Data not available.

Eggs and Layers: Layers on Hand and Eggs Produced by Type,  
and Forced Molt, United States, February-March 1993-94

Item	1993	1994 <u>1</u> /	1994 as % of 1993
Layers During Feb (1,000)			
All Layers	282,481	288,309	102
Table Egg Type	236,512	238,588	101
Hatching Egg Type	45,969	49,721	108
Broiler-Type Hatching	43,035	46,878	109
Egg-Type Hatching	2,934	2,843	97
Eggs per 100 Layers During Feb (Number)			
All Layers	1.923	1.928	100
Table Egg Type	1.971	1.985	101
Hatching Egg Type	1.677	1.653	99
Broiler-Type Hatching	1.652	1.630	99
Egg-Type Hatching	2.045	2.040	100
Eggs Produced During Feb (Million)			
All Layers	5.432	5.559	102
Table Egg Type	4.661	4.737	102
Hatching Egg Type	771	822	107
Broilers-Type Hatching	711	764	107
Egg-Type Hatching	60	58	97
Layers on Mar 1 (1,000)			
All Layers	282,005	288,803	102
Table Egg Type	236,077	238,923	101
Hatching Egg Type	45,928	49,880	109
Broiler-Type Hatching	42,955	47,019	109
Egg-Type Hatching	2,973	2,861	96
Eggs per 100 Layers on Mar 1 (Number)			
All Layers	69.4	69.6	100
Table Egg Type	70.8	71.7	101
Hatching Egg Type	59.9	59.2	99
Broiler-Type Hatching	59.5	58.4	98
Egg-Type Hatching	73.0	72.9	100
Forced Molt Layers, Mar 1			
Percent Being Molting	<u>2</u> /	3.6	
Percent with Molt Completed	<u>2</u> /	20.8	

1/ Preliminary.

2/ Data not available.

Eggs and Layers: Layers on Hand and Eggs Produced by Type, and Forced Molt, January-February, 30 Selected States, 1993-94 1/

Item	1993 <u>2/</u>	1994 <u>3/</u>	1994 as % of 1993
Layers During Jan (1,000)			
All Layers		271,527	
Table Egg Type		225,282	
Hatching Egg Type		46,245	
Broiler-Type Hatching		43,629	
Egg-Type Hatching		2,616	
Eggs per 100 Layers During Jan (Number)			
All Layers		2,133	
Table Egg Type		2,200	
Hatching Egg Type		1,808	
Broiler-Type Hatching		1,786	
Egg-Type Hatching		2,179	
Eggs Produced During Jan (Million)			
All Layers		5,793	
Table Egg Type		4,957	
Hatching Egg Type		836	
Broilers-Type Hatching		779	
Egg-Type Hatching		57	
Layers on Feb 1 (1,000)			
All Layers		271,562	
Table Egg Type		225,116	
Hatching Egg Type		46,446	
Broiler-Type Hatching		43,853	
Egg-Type Hatching		2,593	
Eggs per 100 Layers on Feb 1 (Number)			
All Layers		68.1	
Table Egg Type		70.1	
Hatching Egg Type		58.5	
Broiler-Type Hatching		57.6	
Egg-Type Hatching		73.3	
Forced Molt Layers, Feb 1			
Percent Being Molted		5.3	
Percent with Molt Completed		21.3	
Pullets Less Than 20 Weeks of Age, Feb 1 (1,000)		74,351	
Pullets Added During Jan (1,000)		18,332	
Layers Sold During Jan (1,000)		15,620	
Layers Died, Destroyed, or Disappeared For Any Reason During Jan (1,000)		2,518	

1/ Revised.

2/ Data not available.

3/ The 30 States are listed in the table on page 8.

Eggs and Layers: Layers on Hand and Eggs Produced by Type, and Forced Molt, February-March, 30 Selected States, 1993-94 1/

Item	1993 <u>2/</u>	1994 <u>3/</u>	1994 as % of 1993
Layers During Feb (1,000)			
All Layers		272,181	
Table Egg Type		225,499	
Hatching Egg Type		46,682	
Broiler-Type Hatching		44,040	
Egg-Type Hatching		2,642	
Eggs per 100 Layers During Feb (Number)			
All Layers		1,930	
Table Egg Type		1,986	
Hatching Egg Type		1,656	
Broiler-Type Hatching		1,630	
Egg-Type Hatching		2,082	
Eggs Produced During Feb (Million)			
All Layers		5,252	
Table Egg Type		4,478	
Hatching Egg Type		773	
Broilers-Type Hatching		718	
Egg-Type Hatching		55	
Layers on Mar 1 (1,000)			
All Layers		272,764	
Table Egg Type		225,871	
Hatching Egg Type		46,893	
Broiler-Type Hatching		44,215	
Egg-Type Hatching		2,678	
Eggs per 100 Layers on Mar 1 (Number)			
All Layers		69.5	
Table Egg Type		71.7	
Hatching Egg Type		59.2	
Broiler-Type Hatching		58.3	
Egg-Type Hatching		73.2	
Forced Molt Layers, Mar 1			
Percent Being Molted		3.7	
Percent with Molt Completed		20.8	
Pullets Less Than 20 Weeks of Age, Mar 1 (1,000)		73,261	
Pullets Added During Feb (1,000)		19,984	
Layers Sold During Feb (1,000)		14,012	
Layers Died, Destroyed, or Disappeared For Any Reason During Feb (1,000)		2,438	

1/ Preliminary.

2/ Data not available.

3/ The 30 States are listed in the table on page 8.

Layers and Eggs: Layers on Hand and Eggs Produced by State  
and United States. During January 1993-94 1/

State	Table Egg Layers in Flocks 30,000 and Above :		All Layers <u>3/</u>		Eggs per 100 for All Layers <u>3/</u>	
	1993 <u>2/</u>	1994	1993	1994	1993	1994
	----- 1,000 -----		----- Number -----			
AL	4,988	10,896	11,550	2,001	1,974	
AR	7,232	15,938	17,036	1,976	1,873	
CA	23,609	26,100	24,336	2,115	2,092	
CO	2,704	<u>2/</u>	3,246	<u>2/</u>	2,002	
CT	3,581	3,644	3,784	2,223	2,273	
FL	9,175	9,723	10,034	2,263	2,222	
GA	11,544	18,429	19,207	2,051	2,124	
HI	740	893	816	2,052	1,981	
IL	2,842	<u>2/</u>	3,017	<u>2/</u>	1,989	
IN	20,397	20,258	21,274	2,226	2,172	
IA	13,515	12,800	14,250	2,086	2,189	
ME	4,735	4,066	4,920	2,361	2,317	
MD	2,746	<u>2/</u>	3,323	<u>2/</u>	2,197	
MI	4,968	5,116	5,278	2,186	2,251	
MN	9,495	10,981	10,370	2,095	2,093	
MS	2,610	5,869	6,240	1,959	1,955	
MO	6,150	6,594	6,588	1,987	2,095	
NE	7,625	<u>2/</u>	7,775	<u>2/</u>	2,083	
NY	3,467	3,725	3,809	2,309	2,337	
NC	6,680	13,126	13,698	1,935	2,000	
OH	19,223	18,561	19,676	2,284	2,277	
OK	1,980	<u>2/</u>	3,535	<u>2/</u>	1,839	
OR	2,397	<u>2/</u>	2,597	<u>2/</u>	2,233	
PA	19,194	21,100	20,496	2,275	2,293	
SC	4,037	5,166	4,965	2,207	2,175	
SD	1,770	<u>2/</u>	2,055	<u>2/</u>	2,430	
TX	12,401	14,551	15,501	2,096	2,142	
VA	1,557	<u>2/</u>	3,943	<u>2/</u>	1,953	
WA	4,681	4,669	4,918	2,335	2,338	
WI	2,739	<u>2/</u>	3,290	<u>2/</u>	2,249	
30 Sts	218,782	<u>2/</u>	271,527	<u>2/</u>	2,133	
Oth Sts <u>4/</u>	11,905	<u>2/</u>	16,403	<u>2/</u>	2,097	
US	230,687	282,098	287,930	2,138	2,131	

1/ 1994 revised.

2/ Data not available.

3/ Includes all layers and eggs produced in both table egg and hatching egg flocks regardless of size.

4/ Estimates for individual States are not available.



Layers and Eggs: Layers on Hand and Eggs Produced by State  
and United States, During February 1993-94 1/

State	Table Egg Layers in Flocks 30,000 and Above :		All Layers <u>3/</u> :		Eggs per 100 for All Layers <u>3/</u> :	
	1993 <u>2/</u> :	1994	1993	1994	1993	1994
	----- 1,000 -----				----- Number -----	
AL	5.015	11.158	11,626	1,775	1,763	
AR	7.318	15.678	17,228	1,767	1,678	
CA	23.224	25.901	23,901	1,900	1,912	
CO	2,742	<u>2/</u>	3,290	<u>2/</u>	1,793	
CT	3,490	3,702	3,695	1,999	2,030	
FL	9,250	9,866	10,131	1,987	1,964	
GA	11,401	18,551	19,074	1,854	1,908	
HI	729	864	808	1,854	1,828	
IL	2,794	<u>2/</u>	2,963	<u>2/</u>	1,789	
IN	20,340	20,442	21,241	2,011	2,039	
IA	13,765	12,850	14,500	1,875	1,986	
ME	4,809	4,023	4,993	2,138	2,103	
MD	2,612	<u>2/</u>	3,226	<u>2/</u>	1,984	
MI	4,896	5,100	5,203	1,971	2,047	
MN	9,528	10,824	10,419	1,940	1,910	
MS	2,619	5,932	6,335	1,770	1,752	
MO	6,150	6,635	6,696	1,839	1,912	
NE	7,650	<u>2/</u>	7,800	<u>2/</u>	1,890	
NY	3,480	3,726	3,819	2,067	2,095	
NC	6,600	13,234	13,631	1,738	1,805	
OH	19,637	18,581	20,100	2,067	2,040	
OK	1,975	<u>2/</u>	3,560	<u>2/</u>	1,685	
OR	2,476	<u>2/</u>	2,680	<u>2/</u>	1,940	
PA	19,300	21,251	20,618	2,005	2,066	
SC	4,065	5,118	5,013	1,973	1,995	
SD	1,728	<u>2/</u>	2,005	<u>2/</u>	2,170	
TX	12,440	14,525	15,500	1,852	1,910	
VA	1,590	<u>2/</u>	3,937	<u>2/</u>	1,778	
WA	4,597	4,701	4,834	2,127	2,151	
WI	2,811	<u>2/</u>	3,355	<u>2/</u>	1,997	
30 Sts	219,031	<u>2/</u>	272,181	<u>2/</u>	1,930	
Oth Sts <u>4/</u>	11,730	<u>2/</u>	16,128	<u>2/</u>	1,904	
US	225,562	282,481	288,309	1,923	1,928	

1/ 1994 preliminary.

2/ Data not available.

3/ Includes all layers and eggs produced in both table egg and hatching egg flocks regardless of size.

4/ Estimates for individual States are not available.

Egg Production: By Type, State, and United States,  
January 1993-94 1/

State	Total Production		Table Eggs <u>2/</u>		Hatching Eggs <u>2/</u>	
	1993	1994	1993	1994	1993	1994
	Million Eggs					
AL	218	228	110	111	108	117
AR	315	319	155	154	160	165
CA	552	509				
CO	<u>3/</u>	65				
CT	81	86				
FL	220	223	206	206	14	17
GA	378	408	241	267	137	141
HI	18	16	18	16	0	0
IL	<u>3/</u>	60	<u>3/</u>	59	<u>3/</u>	1
IN	451	462	439	452	12	10
IA	267	312				
ME	96	114				
MD	<u>3/</u>	73	<u>3/</u>	63	<u>3/</u>	10
MI	112	119				
MN	230	217	221	208	9	9
MS	115	122	63	56	52	66
MO	131	138				
NE	<u>3/</u>	162	<u>3/</u>	162	<u>3/</u>	0
NY	86	89				
NC	254	274	139	155	115	119
OH	424	448				
OK	<u>3/</u>	65	<u>3/</u>	43	<u>3/</u>	22
OR	<u>3/</u>	58	<u>3/</u>	56	<u>3/</u>	2
PA	480	470	465	455	15	15
SC	114	108	99	91	15	17
SD	<u>3/</u>	50	<u>3/</u>	50	<u>3/</u>	0
TX	305	332	262	288	43	44
VA	<u>3/</u>	77	<u>3/</u>	37	<u>3/</u>	40
WA	109	115				
WI	<u>3/</u>	74				
30 Sts	<u>3/</u>	5,793	<u>3/</u>	4,957	<u>3/</u>	836
Oth Sts <u>4/</u>	<u>3/</u>	344	<u>3/</u>	288	<u>3/</u>	56
US	6,030	6,137	5,187	5,245	843	892

1/ 1994 revised.

2/ Data by type of flock not shown for some States to avoid disclosing individual operations.

3/ Data not available.

4/ Estimates for individual States are not available.

Egg Production: By Type, State, and United States,  
February 1993-94 <sup>1/</sup>

State	Total Production		Table Eggs <sup>2/</sup>		Hatching Eggs <sup>2/</sup>	
	1993	1994	1993	1994	1993	1994
	Million Eggs					
AL	198	205	96	98	102	107
AR	277	289	133	138	144	151
CA	492	457				
CO	<sup>3/</sup>	59				
CT	74	75				
FL	196	199	183	183	13	16
GA	344	364	219	237	125	127
HI	16	15	16	15	0	0
IL	<sup>3/</sup>	53	<sup>3/</sup>	52	<sup>3/</sup>	1
IN	411	433	400	423	11	10
IA	241	288				
ME	86	105				
MD	<sup>3/</sup>	64	<sup>3/</sup>	55	<sup>3/</sup>	9
MI	100	106				
MN	210	199	201	190	9	9
MS	105	111	58	51	47	60
MO	122	128				
NE	<sup>3/</sup>	147	<sup>3/</sup>	147	<sup>3/</sup>	0
NY	77	80				
NC	230	246	126	137	104	109
OH	384	410				
OK	<sup>3/</sup>	60	<sup>3/</sup>	38	<sup>3/</sup>	22
OR	<sup>3/</sup>	52	<sup>3/</sup>	50	<sup>3/</sup>	2
PA	426	426	413	411	13	15
SC	101	100	88	84	13	16
SD	<sup>3/</sup>	44	<sup>3/</sup>	44	<sup>3/</sup>	0
TX	269	296	230	256	39	40
VA	<sup>3/</sup>	70	<sup>3/</sup>	32	<sup>3/</sup>	38
WA	100	104				
WI	<sup>3/</sup>	67				
30 Sts	<sup>3/</sup>	5,252	<sup>3/</sup>	4,478	<sup>3/</sup>	773
Oth Sts <sup>3/</sup>	<sup>3/</sup>	307	<sup>3/</sup>	258	<sup>3/</sup>	49
US	5,432	5,559	4,661	4,737	771	822

<sup>1/</sup> 1994 preliminary.

<sup>2/</sup> Data by type of flock not shown for some States to avoid disclosing individual operations.

<sup>3/</sup> Data not available.

<sup>4/</sup> Estimates for individual States are not available.

Forced Molt: Percent of All Layers by Month,  
United States, 1993-94 1/

Month	Percent Being Molted		Percent with Molt Completed	
	1993	1994	1993	1994
	Percent			
Jan	<u>2/</u>	4.5	<u>2/</u>	22.1
Feb	<u>2/</u>	5.4	<u>2/</u>	21.2
Mar	<u>2/</u>	3.6	<u>2/</u>	20.8
Apr				
May				
Jun				
Jul				
Aug				
Sep				
Oct				
Nov				
Dec				

1/ As of first of month.

2/ Data not available.

Forced Molt: Percent of All Layers by State  
and United States, 1993-94 1/

State	March			
	Percent Being Molted		Percent with Molt Completed	
	1993	1994	1993	1994
	Percent			
AL	4.0	2.5	18.5	16.0
AR	3.0	4.0	14.5	12.0
CA	9.0	6.0	40.0	45.0
CO	<u>2/</u>	5.0	<u>2/</u>	23.0
CT	0.5	3.0	14.0	14.5
FL	5.5	4.5	30.0	35.0
GA	4.0	2.5	23.5	19.5
HI	<u>2/</u>	4.0	<u>2/</u>	37.0
IL	<u>2/</u>	11.0	<u>2/</u>	21.0
IN	1.0	1.5	15.0	19.5
IA	5.5	6.0	24.5	25.0
ME	0.0	0.5	0.5	0.5
MD	<u>2/</u>	2.0	<u>2/</u>	17.5
MI	1.5	2.0	18.0	16.0
MN	4.5	6.0	31.5	29.0
MS	5.0	5.0	24.5	17.5
MO	3.0	1.5	27.5	14.0
NE	<u>2/</u>	5.0	<u>2/</u>	15.0
NY	1.0	1.0	8.0	4.5
NC	2.5	2.5	22.0	16.0
OH	2.0	1.0	9.5	10.0
OK	<u>2/</u>	2.0	<u>2/</u>	6.0
OR	<u>2/</u>	5.5	<u>2/</u>	21.5
PA	4.0	3.0	17.5	12.0
SC	7.0	5.0	29.0	17.0
SD	<u>2/</u>	15.5	<u>2/</u>	34.5
TX	3.0	5.5	31.0	28.0
VA	<u>2/</u>	2.5	<u>2/</u>	13.0
WA	4.5	4.0	36.0	46.0
WI	<u>2/</u>	5.5	<u>2/</u>	29.0
30 Sts <u>3/</u>	3.9	3.7	22.7	20.8
Oth Sts <u>4/</u>	<u>2/</u>	2.7	<u>2/</u>	20.8
US	<u>2/</u>	3.6	<u>2/</u>	20.8

1/ As of first of month.

2/ Estimates for individual States are not available.

3/ 1993 data are for 20 major states.

4/ Estimates for individual States are not available.

Hatchery Production: Eggs in Incubators, Chicks Hatched,  
and Placements by Type, United States, February-March 1993-94

Item	1993	1994	1994 as % of 1993
	1,000		Percent
Egg-Type			
Eggs in Incubators on Mar 1	35,615	28,546	80
Chicks Hatched During Feb	33,673	31,056	92
Chicks Hatched Jan thru Feb	67,041	63,872	95
Pullets Placed in Hatchery			
Supply Flocks During Feb	119	186	156
7-18 Month Earlier <u>1/</u>	2,553	2,812	110
Broiler-Type			
Eggs in Incubators on Mar 1	496,938	521,134	105
Chicks Hatched During Feb	536,422	557,767	104
Chicks Hatched Jan thru Feb	1,124,323	1,175,473	105
Pullets Placed in Hatchery			
Supply Flocks During Feb	4,549	5,518	121
7-14 Months Earlier <u>2/</u>	40,819	43,906	108

1/ 1994 includes pullet chicks placed Aug 1992 through Jul 1993.

2/ 1994 includes pullet chicks placed Dec 1992 through Jul 1993.

Egg-Type Eggs in Incubators: By Region and United States,  
March 1, 1993-94

Geographic Division	1993	1994	1994 as % of 1993
	1,000		Percent
North Atlantic	4,840	4,860	100
E North Central	9,588	6,938	72
W North Central	6,469	4,357	67
South Atlantic	5,122	3,869	76
South Central	4,678	3,736	80
West	4,918	4,786	97
US	35,615	28,546	80

Regional Listing:

North Atlantic = CT, ME, MA, NH, NJ, NY, PA, RI, VT.

E North Central = IL, IN, MI, OH, WI.

W North Central = IA, KS, MN, MO, NE, ND, SD.

South Atlantic = DE, FL, GA, MD, NC, SC, VA, WV.

South Central = AL, AR, KY, LA, MS, OK, TN, TX.

West = AK, AZ, CA, CO, HI, ID, MT, NM, NV, OR, UT, WA, WY.

Egg-Type Chicks Hatched: By State and United States.  
February 1993-94

State	February			Jan-Feb		
	1993	1994	1994 as % of 1993	1993	1994	1994 as % of 1993
	----- 1,000 -----		Percent	----- 1,000 -----		Percent
AR	1,310	1,352	103	2,183	2,542	116
FL	1,428	1,002	70	2,940	1,981	67
GA	2,239	1,222	55	4,555	2,710	59
IN	6,122	6,196	101	12,594	12,223	97
IA	2,984	2,211	74	5,354	4,573	85
KS	431	124	29	731	276	38
MN	2,068	2,199	106	3,757	4,375	116
MO	472	395	84	953	878	92
PA	4,001	4,044	101	7,240	8,785	121
Oth Sts <u>1/</u>	12,618	12,311	98	26,734	25,529	95
US	33,673	31,056	92	67,041	63,872	95

1/ Not published separately to avoid disclosing data for individual operations.

Egg-Type Chicks Hatched: By Month, United States, 1992-94

Month	By Months				Cumulative			
	1992	1993	1994	1994 as % of 1993	1992	1993	1994	1994 as % of 1993
	----- 1,000 -----			Percent	----- 1,000 -----			Percent
Jan	32,496	33,368	32,816	98	32,496	33,368	32,816	98
Feb	31,951	33,673	31,056	92	64,447	67,041	63,872	95
Mar	36,496	37,280			100,943	104,321		
Apr	35,774	37,241			136,717	141,562		
May	38,479	37,052			175,196	178,614		
Jun	34,571	35,078			209,767	213,692		
Jul	32,067	34,177			241,834	247,869		
Aug	27,551	32,755			269,385	280,624		
Sep	27,960	31,878			297,345	312,502		
Oct	31,995	32,241			329,340	344,743		
Nov	26,918	30,825			356,258	375,568		
Dec	29,512	31,519			385,770	407,087		

Intended Placements: Egg-Type Pullet Chicks for Hatchery Supply  
Flocks by Month and Total, United States, 1992-94 1/

Month	Pullet Chicks Hatched				Cumulative Potential Placements Relative to Current Supply Flocks 7-18 Months Earlier <u>2/</u>		
	as % of:				1993		
	1992	1993	1994		1992	1993	1994
	----- 1,000 -----				----- 1,000 -----		
	Percent						
Jan	181	193	197	102	2,483	2,529	2,806
Feb	273	119	186	156	2,375	2,553	2,812
Mar	186	268			2,322	2,604	2,754
Apr	178	251			2,337	2,655	2,787
May	262	275			2,437	2,637	2,801
Jun	225	267			2,476	2,696	2,690
Jul	237	243			2,381	2,738	2,782
Aug	277	219			2,483	2,750	2,786
Sep	237	270			2,617	2,596	2,853
Oct	237	251			2,524	2,678	
Nov	269	158			2,471	2,751	
Dec	176	268			2,483	2,764	
Total	2,738	2,782					

1/ Reported by leading breeders. Coverage may not be 100 percent. Includes expected pullet chicks from eggs sold during the preceding month at the rate of 125 pullet chicks per 30 dozen case of eggs.

2/ For Feb 1994, includes breeder pullet chicks hatched Aug 1992 through Jul 1993.

Broiler-Type Eggs in Incubators: By Region  
and United States, March 1, 1993-94

Geographic Division	1993		1994		1994 as % of 1993
	----- 1,000 -----				Percent
North Atlantic	11,201		11,822		106
E North Central	5,644		5,600		99
W North Central	11,755		11,564		98
South Atlantic	201,183		209,190		104
South Central	245,269		260,948		106
West	21,886		22,010		101
US	496,938		521,134		105



Broiler-Type Chicks Hatched: Number by State  
and United States, February 1993-94

State	February			Jan-Feb		
	1993	1994	1994 as % of 1993	1993	1994	1994 as % of 1993
	----- 1,000 -----		Percent	----- 1,000 -----		Percent
AL	79,807	80,817	101	166,874	169,719	102
AR	91,372	93,238	102	191,415	196,271	103
DE	13,861	13,790	99	29,663	29,027	98
FL	11,620	11,547	99	24,559	24,015	98
GA	76,681	77,751	101	160,101	165,465	103
MD	30,775	31,290	102	65,793	67,139	102
MS	38,806	43,932	113	81,451	93,136	114
NC	52,569	50,562	96	111,289	108,748	98
PA	9,031	10,308	114	20,166	21,803	108
SC	9,675	13,334	138	20,331	27,642	136
TX	31,166	31,720	102	66,774	67,524	101
VA	17,085	17,244	101	35,486	36,283	102
CA TN & WV	27,568	28,967	105	56,675	60,873	107
15 Sts <u>1/</u>	490,016	504,500	103	1,030,577	1,067,645	104
OR & WA	4,807	5,335	111	9,546	11,098	116
Oth Sts <u>2/</u>	41,599	47,932	115	84,200	96,730	115
US	536,422	557,767	104	1,124,323	1,175,473	105

1/ States in the weekly hatchery production estimating program.

2/ Not published separately to avoid disclosing data for individual operations.

Broiler Chicks Hatched: By Month, United States, 1992-94

Month	By Months				Cumulative			
	1992	1993	1994	1994 as % of 1993	1992	1993	1994	1994 as % of 1993
	----- 1,000 -----			Percent	----- 1,000 -----			Percent
Jan	576,852	587,901	617,706	105	576,852	587,901	617,706	105
Feb	533,606	536,422	557,767	104	1,110,458	1,124,323	1,175,473	105
Mar	587,091	611,942			1,697,549	1,736,265		
Apr	573,530	590,408			2,271,079	2,326,673		
May	597,998	624,310			2,869,077	2,950,983		
Jun	584,534	610,701			3,453,611	3,561,684		
Jul	585,950	614,287			4,039,561	4,175,971		
Aug	574,793	607,945			4,614,354	4,783,916		
Sep	554,836	578,644			5,169,190	5,362,560		
Oct	546,993	579,919			5,716,183	5,942,479		
Nov	526,351	568,614			6,242,534	6,511,093		
Dec	588,334	618,968			6,830,868	7,130,061		

Intended Placements: Broiler-Type Pullet Chicks for Hatchery  
Supply Flocks by Month and Total, 1992-94 1/

Month	Pullet Chicks Hatched			1994 as % of: 1993	Cumulative Potential Placements Relative to Current Supply Flocks 7-14 Months Earlier <u>2/</u>		
	1992	1993	1994		1992	1993	1994
	----- 1,000 -----	----- 1,000 -----	----- 1,000 -----		----- 1,000 -----	----- 1,000 -----	----- 1,000 -----
US Place- ments							
Jan	4,995	5,664	5,989	106	39,950	40,202	42,665
Feb	4,674	4,549	5,518	121	39,903	40,819	43,906
Mar	5,234	5,678			40,103	40,908	44,486
Apr	5,492	5,531			40,588	41,133	43,943
May	4,831	5,944			40,590	41,866	44,907
Jun	5,170	5,568			40,453	41,358	44,746
Jul	5,431	5,967			39,889	40,871	44,884
Aug	5,081	5,585			39,270	41,704	44,929
Sep	5,220	5,121			39,092	41,083	44,879
Oct	5,407	5,513			39,659	41,330	
Nov	4,726	5,517			40,211	41,780	
Dec	5,005	5,669			39,963	42,504	
Annual Total	61,266	66,306					
Total Place- ments <sup>3/</sup>							
Jan	6,339	7,098	7,168	101			
Feb	6,056	5,664	6,829	121			
Mar	6,685	6,909					
Apr	6,796	6,420					
May	5,984	7,182					
Jun	6,401	6,723					
Jul	6,464	7,114					
Aug	6,022	6,587					
Sep	6,242	6,177					
Oct	6,599	6,634					
Nov	5,814	6,718					
Dec	6,493	6,949					
Annual Total	75,895	80,175					

1/ Reported by leading breeders. Coverage may not be 100 percent. Includes expected pullet chicks from eggs sold during the preceding month at the rate of 125 pullet chicks per 30 dozen case of eggs.

2/ For Feb 1994, includes breeder pullet chicks hatched Dec 1992 through Jul 1993.

3/ U.S. production of intended placements worldwide.

**Data Sources:** Primary data for the "Chickens & Eggs" report are collected from weekly and/or monthly questionnaires sent to producers. An attempt is made to collect information for the layer and egg estimates from all known contractors and independent producers with over 30,000 table egg layers in their flock. Coverage for table egg operations with less than 30,000 table egg layers are estimated each month based on data reported in December. Approximately 910 contractors, independent egg producers and started pullet operations are contacted each month. An attempt is made to collect hatchery information from all known hatcheries. Approximately 340 hatcheries are contacted on a weekly and/or monthly basis.

**Revisions:** Revisions are generally the result of late or corrected data. Each report will contain revisions for the previous month for layer and egg estimates. Additionally, revisions that are needed after the monthly report will be made at the end of the marketing year and published in the respective annual summaries for Layers and Egg, and Hatchery.

**Procedures and Reliability:** Operations are mailed a questionnaire and given adequate time to respond by mail. Those that do not respond by mail are telephoned. Great care is exercised to ensure that operations are accounted for during each survey period. However, normally there are missing reports that must be accounted for in the estimates.

Sound statistical methodology is employed to derive the estimates from the reported data. All data are checked for unusual values. Each operation's data are compared to their own past operating profile and also compared to trends from other operations. Data for missing operations are estimated based on similar operations or historical data. Survey data are subject to non-sampling errors such as omissions and mistakes in reporting and in processing the data. While these errors cannot be measured directly, they are minimized by carefully reviewing all reported data for consistency and reasonableness.

Egg-type chicks hatched are comprised of all chicks of egg-type domesticated breeds including males, chicks destined for hatchery supply flocks, and research purposes. The relationship of chicks hatched to chicken inventory and poultry marketings are carefully monitored. The disposition of egg-type chicks hatched prior to placement into the laying flock can vary significantly, which can make comparisons to changes in layer inventory inconsistent over time.

Intended placement data, reported by leading breeders, include pullet chicks expected from eggs sold the preceding month. The breeders in this report account for a large percentage of replacement pullets for hatchery supply flocks. Production of replacement pullets by these breeders provide an indication of the potential number of pullets available for addition to hatchery egg supply flocks several months before the pullets will actually move into the flocks.

The next "Chickens and Eggs" report will be released at 3 p.m. ET on April 25, 1994.

The United States Department of Agriculture (USDA) prohibits discrimination in its programs on the basis of race, color, national origin, sex, religion, age, disability, political beliefs, and marital or familial status. Persons with disabilities who require alternative means for communication of program information (braille, large print, audiotape, etc.) should contact the USDA Office of Communications at (202) 720-5881 (voice) or (202) 720-7808 (TDD).

To file a complaint, write the Secretary of Agriculture, USDA, Washington, D.C., 20250, or call (202) 720-7327 (voice) or (202) 720-1127 (TDD). USDA is an equal employment opportunity employer.

## ☒ **Want to subscribe?** ☒ **Time to renew?**

Subscribe to **Chickens and Eggs** today! If you already subscribe to this timely periodical, note that expiration information about your subscription appears on the top line of your mailing label. **Expiration information will appear in one of two formats: 1-PEC-2 (this means you have TWO issues remaining in your subscription) or APR95 (expiration date is April 1995). Disregard this notice if no renewal information appears. Call 1-800-999-6779, and tell us whether you want to subscribe or renew, or return this form to: ERS-NASS, 341 Victory Drive, Herndon, VA 22070.**

### **Chickens and Eggs**

- ☐ Yes! I want to **start** my subscription.  
☐ Yes! I want to **renew** my subscription.

	1 Year	2 Years	3 Years
Domestic	<input type="checkbox"/> \$36.00	<input type="checkbox"/> \$70.00	<input type="checkbox"/> \$105.00
Foreign	<input type="checkbox"/> \$45.00	<input type="checkbox"/> \$87.50	<input type="checkbox"/> \$131.25

#### **New subscribers:**

Name: \_\_\_\_\_

Address: \_\_\_\_\_

City, State, Zip: \_\_\_\_\_

Daytime phone: (\_\_\_\_) \_\_\_\_\_

#### **Renewals:**

ATTACH MAILING LABEL HERE

#### **Payment method:**

- ☐ Bill me (domestic orders only). Use purchase orders, checks drawn on U.S. banks, cashier's checks, or international money orders. **Make payable to ERS-NASS.**  
☐ Enclosed is \$\_\_\_\_\_.

**Credit card orders:** ☐ MasterCard ☐ Visa Total charges \$\_\_\_\_\_.

Credit card number:

Card expiration date:     
Month/Year

**For fastest service, call our toll-free order desk 1-800-999-6779,  
in the U.S. and Canada; other areas please call 703-834-0125,  
or FAX this page to 703-834-0110.**