

Chickens and Eggs



National
Agricultural
Statistics
Service

United States
Department of
Agriculture

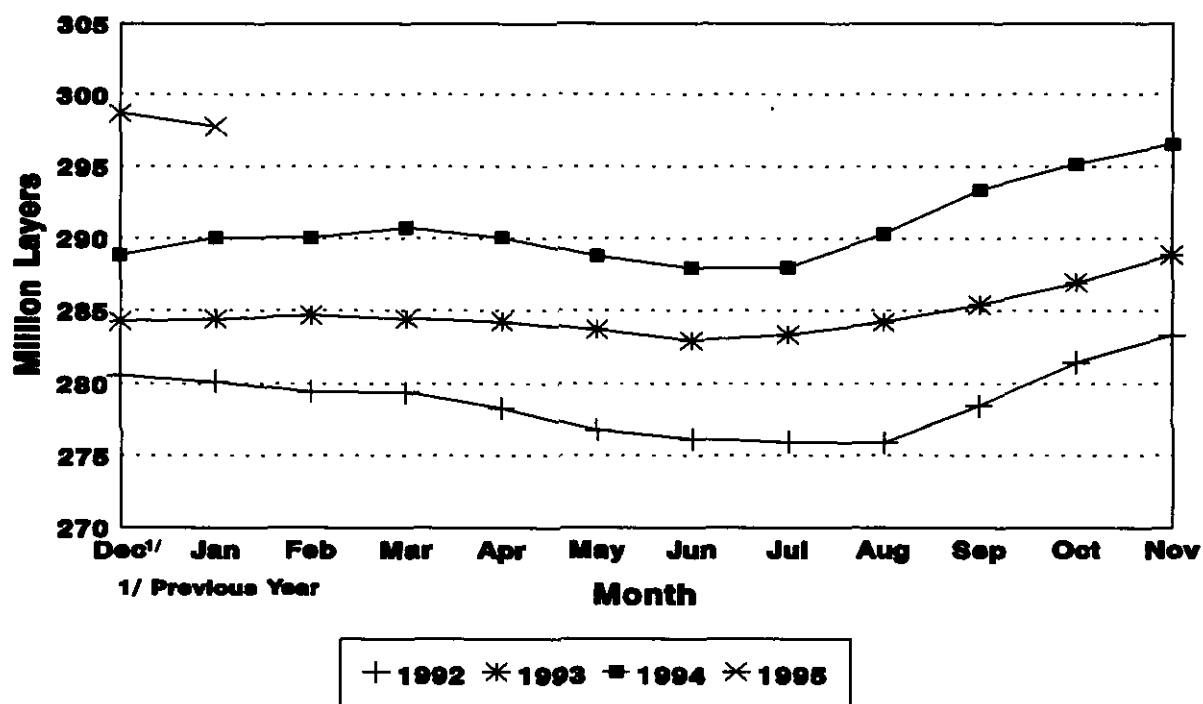
Washington, D.C.

Released February 24, 1995, by the Agricultural Statistics Board. Estimates refer to December 1994 and January and February 1995.

January Egg Production Up 3 Percent

U.S. egg production totaled 6.37 billion during January 1995, up 3 percent from the 6.19 billion produced in January 1994. Production included 5.42 billion table eggs and 956 million hatching egg type, of which 891 million were broiler-type and 65.0 million were egg-type. The total number of layers during January 1995 averaged 298 million, up 3 percent from the 290 million during January 1994. January egg production per 100 layers was 2,140 eggs, compared with 2,133 in January 1994.

Average Number of Layers United States, 1992 - 95



For information call Joel D. Moore at (202) 720-3244. Office hours are 8:00 a.m. to 4:30 p.m. ET.

All layers in the U.S. on February 1, 1995, totaled 297 million, compared with 290 million a year ago. The 297 million layers consisted of 244 million layers producing table or commercial type eggs, 49.6 million layers producing broiler-type hatching eggs, and 2.78 million layers producing egg-type hatching eggs. Rate of lay per day on February 1, 1995, averaged 68.0 eggs per 100 layers, down slightly from the 68.1 eggs a year ago.

Laying flocks in the 30 major egg production States produced 6.03 billion eggs during January, up 3 percent from January 1994. The average number of layers during January, at 281 million, was also up 3 percent from the year earlier.

Individual State estimates are available for the 30 major egg producing States. These States are listed on page 8 of this release and account for approximately 95 percent of the total U.S. egg production. Production for the other States are grouped into an "Other States" category and combined with the 30 States published individually to obtain a U.S. estimate. Individual State estimates for "Other States" are available annually in the "Layers and Egg Production" report.

Egg-Type Chicks Hatched Down 4 Percent

Egg-type chicks **hatched** during January totaled 31.5 million, down 4 percent from January 1994. **Eggs in incubators** totaled 28.7 million on February 1, 1995, down slightly from a year ago.

Domestic placements of **egg-type pullet chicks for future hatchery supply flocks** by leading breeders totaled 236,000 during January 1995, up 20 percent from the 197,000 of January 1994.

Broiler Hatch Up 7 Percent

The January 1995 **hatch** of broiler-type chicks, at 661 million, was 7 percent above January of the previous year. There were 537 million **eggs in incubators** on February 1, 1995, up 6 percent from a year earlier.

Leading breeders placed 5.75 million **broiler-type pullet chicks for future domestic hatchery supply flocks** during January 1995, down 4 percent from January 1994.

For information call Tom Kruchten at (202) 690-4870

Layers: Average Number During the Month.
United States, 1992-1995 1/

Month	:	1992	:	1993	:	1994	:	1995

	:	1,000 Layers						
Dec <u>2/</u>	:	280,572		284,267		288,832		298,709
Jan	:	280,171		284,398		290,041		297,805
Feb	:	279,450		284,638		290,047		
Mar	:	279,373		284,405		290,719		
Apr	:	278,284		284,234		290,073		
May	:	276,790		283,694		288,784		
Jun	:	276,142		282,914		287,974		
Jul	:	275,953		283,324		287,990		
Aug	:	275,891		284,192		290,321		
Sep	:	278,461		285,418		293,381		
Oct	:	281,573		286,948		295,172		
Nov	:	283,305		288,875		296,547		

1/ Data are for chart on cover page.

2/ December preceding year.

Eggs and Layers: Layers on Hand and Eggs Produced by Type,
and Forced Molt, United States, December-January 1993-95

Item	1993	1994 ^{1/}	1994 as % of 1993
Layers During Dec (1,000)			
All Layers	288,832	298,709	103
Table Egg Type	240,847	247,213	103
Hatching Egg Type	47,985	51,496	107
Broiler-Type Hatching	45,235	48,742	108
Egg-Type Hatching	2,750	2,754	100
Eggs per 100 Layers During Dec (Number)			
All Layers	2.169	2.182	101
Table Egg Type	2.237	2.252	101
Hatching Egg Type	1.826	1.847	101
Broiler-Type Hatching	1.804	1.822	101
Egg-Type Hatching	2.182	2.288	105
Eggs Produced During Dec (Million)			
All Layers	6.264	6.519	104
Table Egg Type	5.388	5.568	103
Hatching Egg Type	876	951	109
Broiler-Type Hatching	816	888	109
Egg-Type Hatching	60	63	105
Layers on Jan 1 (1,000)			
All Layers	290,413	298,864	103
Table Egg Type	241,305	246,866	102
Hatching Egg Type	49,108	51,998	106
Broiler-Type Hatching	46,316	49,218	106
Egg-Type Hatching	2,792	2,780	100
Eggs per 100 Layers on Jan 1 (Number)			
All Layers	69.4	70.0	101
Table Egg Type	71.5	72.2	101
Hatching Egg Type	58.8	59.4	101
Broiler-Type Hatching	58.0	58.5	101
Egg-Type Hatching	72.3	75.0	104
Forced Molt Layers, Jan 1			
Percent Being Molted	4.5	4.6	101
Percent with Molt Completed	22.4	23.8	106

^{1/} Revised.

Eggs and Layers: Layers on Hand and Eggs Produced by Type,
and Forced Molt, United States, January-February 1994-95

Item	1994	1995 <u>1</u> /	1995 as % of 1994
Layers During Jan (1,000)			
All Layers	290,041	297,805	103
Table Egg Type	240,692	245,584	102
Hatching Egg Type	49,349	52,221	106
Broiler-Type Hatching	46,526	49,436	106
Egg-Type Hatching	2,823	2,785	99
Eggs per 100 Layers During Jan (Number)			
All Layers	2.133	2.140	100
Table Egg Type	2.199	2.206	100
Hatching Egg Type	1.810	1.831	101
Broiler-Type Hatching	1.788	1.802	101
Egg-Type Hatching	2.161	2.334	108
Eggs Produced During Jan (Million)			
All Layers	6.186	6.374	103
Table Egg Type	5.293	5.418	102
Hatching Egg Type	893	956	107
Broilers-Type Hatching	832	891	107
Egg-Type Hatching	61	65	107
Layers on Feb 1 (1,000)			
All Layers	289,625	296,705	102
Table Egg Type	240,057	244,281	102
Hatching Egg Type	49,568	52,424	106
Broiler-Type Hatching	46,724	49,645	106
Egg-Type Hatching	2,844	2,779	98
Eggs per 100 Layers on Feb 1 (Number)			
All Layers	68.1	68.0	100
Table Egg Type	70.1	70.0	100
Hatching Egg Type	58.6	58.6	100
Broiler-Type Hatching	57.7	57.6	100
Egg-Type Hatching	72.9	75.5	104
Forced Molt Layers, Feb 1			
Percent Being Molted	5.4	6.4	119
Percent with Molt Completed	21.4	23.6	110

1/ Preliminary.

Eggs and Layers: Layers on Hand and Eggs Produced by Type,
and Forced Molt, 30 Selected States, December-January 1993-95 1/

Item	1993 <u>2/</u>	1994 <u>1/</u>	1994 as % of 1993
Layers During Dec (1,000)			
All Layers		282,242	
Table Egg Type		233,999	
Hatching Egg Type		48,243	
Broiler-Type Hatching		45,593	
Egg-Type Hatching		2,650	
Eggs per 100 Layers During Dec (Number)			
All Layers		2,183	
Table Egg Type		2,253	
Hatching Egg Type		1,843	
Broiler-Type Hatching		1,816	
Egg-Type Hatching		2,302	
Eggs Produced During Dec (Million)			
All Layers		6,162	
Table Egg Type		5,273	
Hatching Egg Type		889	
Broiler-Type Hatching		828	
Egg-Type Hatching		61	
	1994	1995 <u>3/</u>	1995 as % of 1994
Layers on Jan 1 (1,000)			
All Layers	273,686	282,375	103
Table Egg Type	227,681	233,608	103
Hatching Egg Type	46,005	48,767	106
Broiler-Type Hatching	43,391	46,087	106
Egg-Type Hatching	2,614	2,680	103
Eggs per 100 Layers on Jan 1 (Number)			
All Layers	69.4	70.1	101
Table Egg Type	71.6	72.3	101
Hatching Egg Type	58.6	59.4	101
Broiler-Type Hatching	57.8	58.5	101
Egg-Type Hatching	72.6	75.0	103
Forced Molt Layers, Jan 1			
Percent Being Molted	4.5	4.5	100
Percent with Molt Completed	22.9	24.2	106
Pullets Less Than 20 Weeks of Age, Jan 1 (1,000)	73,642	73,197	99
Pullets Added During Dec (1,000)	18,322	19,655	107
Layers Sold During Dec (1,000)	15,432	16,348	106
Layers Died, Destroyed, or Disappeared For Any Reason During Dec (1,000)	2,601	2,628	101

1/ Revised.

2/ Data not available.

3/ The 30 States are listed in the table on page 8.

Eggs and Layers: Layers on Hand and Eggs Produced by Type,
and Forced Molt, 30 Selected States, January-February 1994-95 ^{1/}

Item	1994	1995 ^{2/}	1995 as % of 1994
Layers During Jan (1,000)			
All Layers	273,529	281,192	103
Table Egg Type	227,278	232,298	102
Hatching Egg Type	46,251	48,894	106
Broiler-Type Hatching	43,627	46,211	106
Egg-Type Hatching	2,624	2,683	102
Eggs per 100 Layers During Jan (Number)			
All Layers	2.134	2.143	100
Table Egg Type	2.200	2.208	100
Hatching Egg Type	1.810	1.835	101
Broiler-Type Hatching	1.786	1.803	101
Egg-Type Hatching	2.210	2.385	108
Eggs Produced During Jan (Million)			
All Layers	5.836	6.025	103
Table Egg Type	4.999	5.128	103
Hatching Egg Type	837	897	107
Broilers-Type Hatching	779	833	107
Egg-Type Hatching	58	64	110
Layers on Feb 1 (1,000)			
All Layers	273,345	279,978	102
Table Egg Type	226,863	230,975	102
Hatching Egg Type	46,482	49,003	105
Broiler-Type Hatching	43,854	46,327	106
Egg-Type Hatching	2,628	2,676	102
Eggs per 100 Layers on Feb 1 (Number)			
All Layers	68.1	68.0	100
Table Egg Type	70.1	70.0	100
Hatching Egg Type	58.5	58.7	100
Broiler-Type Hatching	57.6	57.7	100
Egg-Type Hatching	73.2	75.6	103
Forced Molt Layers, Feb 1			
Percent Being Molted	5.3	6.5	123
Percent with Molt Completed	21.4	23.8	111
Pullets Less Than 20 Weeks of Age, Feb 1 (1,000)	74,641	70,731	95
Pullets Added During Jan (1,000)	18,458	18,382	100
Layers Sold During Jan (1,000)	15,763	16,927	107
Layers Died, Destroyed, or Disappeared For Any Reason During Jan (1,000)	2,535	2,818	111

^{1/} Preliminary.

^{2/} The 30 States are listed in the table on page 8.

Layers and Eggs: Layers on Hand and Eggs Produced by State
and United States, During December 1993-94 1/

State	Table Egg Layers in Flocks 30,000 and Above :		All Layers <u>2/</u> :		Eggs per 100 for All Layers <u>2/</u> :	
	1993 <u>3/</u>	1994	1993	1994	1993	1994
	----- 1,000 -----			----- Number -----		
AL	4,788	11,279	11,517	2,066	2,023	
AR	6,407	16,627	16,540	1,876	1,929	
CA	26,754	27,196	27,359	2,173	2,164	
CO	2,546	3,287	3,089	2,160	2,007	
CT	3,478	3,840	3,663	2,240	2,239	
FL	9,146	9,997	9,777	2,261	2,209	
GA	10,619	19,249	18,286	2,156	2,144	
HI	734	814	802	2,000	1,978	
IL	2,715	3,048	2,915	2,198	2,436	
IN	20,937	20,944	21,853	2,215	2,215	
IA	14,588	14,100	15,426	2,213	2,230	
ME	4,783	4,892	4,945	2,310	2,346	
MD	2,719	3,518	3,323	2,246	2,317	
MI	5,143	5,553	5,450	2,235	2,272	
MN	10,148	10,371	10,965	2,160	2,234	
MS	2,567	6,319	6,678	1,994	2,022	
MO	6,103	6,740	6,918	2,166	2,284	
NE	8,950	7,725	9,100	2,083	2,207	
NY	3,551	3,809	3,888	2,337	2,392	
NC	6,556	13,721	13,945	2,033	1,986	
OH	22,238	19,531	22,511	2,273	2,270	
OK	1,950	1,740	3,735	1,839	1,981	
OR	2,420	2,616	2,616	2,217	2,332	
PA	20,385	20,570	21,800	2,329	2,335	
SC	4,018	5,033	5,088	2,205	2,221	
SD	1,588	2,070	1,838	2,446	2,226	
TX	12,425	15,376	15,581	2,140	2,137	
VA	1,711	3,908	3,866	2,021	2,069	
WA	5,009	4,898	5,253	2,287	2,380	
WI	2,990	3,270	3,515	2,232	2,219	
30 Sts	227,966	272,041	282,242	2,170	2,183	
Oth						
Sts <u>4/</u>	11,809	16,791	16,467	2,138	2,168	
US	239,775	288,832	298,709	2,169	2,182	

1/ 1994 revised.

2/ Includes all layers and eggs produced in both table egg and hatching egg flocks regardless of size.

3/ Data not available.

4/ Estimates for individual States are not available.

Layers and Eggs: Layers on Hand and Eggs Produced by State
and United States, During January 1994-95 1/

State	Table Egg Layers in Flocks 30,000 and Above :		All Layers <u>2/</u> :		Eggs per 100 for All Layers <u>2/</u>	
	1994	1995	1994	1995	1994	1995
	----- 1,000 -----				----- Number -----	
AL	4,988	4,614	11,550	11,525	1,974	1,952
AR	7,232	6,354	17,036	16,498	1,873	1,897
CA	25,601	25,961	26,363	26,565	2,090	2,108
CO	2,704	2,628	3,246	3,206	2,002	2,152
CT	3,581	3,390	3,784	3,574	2,273	2,210
FL	9,175	8,856	10,032	9,448	2,223	2,202
GA	11,544	10,438	19,207	18,161	2,124	2,065
HI	745	745	821	794	1,987	2,040
IL	2,842	2,689	3,017	2,901	1,989	2,378
IN	20,397	21,132	21,274	22,058	2,172	2,190
IA	13,515	14,700	14,250	15,575	2,189	2,177
ME	4,735	4,790	4,920	4,953	2,317	2,342
MD	2,746	2,771	3,323	3,397	2,197	2,267
MI	4,968	5,054	5,278	5,351	2,251	2,244
MN	9,495	10,215	10,370	11,036	2,093	2,220
MS	2,610	2,422	6,240	6,533	1,955	1,990
MO	6,150	6,003	6,588	6,828	2,095	2,197
NE	7,625	8,950	7,775	9,100	2,083	2,275
NY	3,467	3,492	3,809	3,819	2,337	2,357
NC	6,680	6,383	13,698	13,950	2,000	1,928
OH	19,223	22,381	19,661	22,661	2,279	2,237
OK	1,980	1,940	3,535	3,725	1,839	2,040
OR	2,397	2,416	2,597	2,604	2,233	2,227
PA	19,225	20,375	20,500	21,785	2,298	2,277
SC	4,037	4,010	4,965	5,035	2,175	2,244
SD	1,770	1,570	2,055	1,815	2,430	2,062
TX	12,401	12,413	15,501	15,656	2,142	2,069
VA	1,557	1,705	3,926	3,902	1,961	1,973
WA	4,681	4,975	4,918	5,239	2,338	2,367
WI	2,739	2,965	3,290	3,498	2,249	2,087
30 Sts	220,810	226,337	273,529	281,192	2,134	2,143
Oth Sts <u>3/</u>	11,905	11,886	16,512	16,613	2,114	2,101
US	232,715	238,223	290,041	297,805	2,133	2,140

1/ 1995 preliminary.

2/ Includes all layers and eggs produced in both table egg and hatching egg flocks regardless of size.

3/ Estimates for individual States are not available.

Egg Production: By Type, State, and United States.
December 1993-94 1/

State	Total Production		Table Eggs <u>2/</u>		Hatching Eggs <u>2/</u>	
	1993	1994	1993	1994	1993	1994
	Million Eggs					
AL	233	233	114	110	119	123
AR	312	319	152	138	160	181
CA	591	592				
CO	71	62				
CT	86	82				
FL	226	216	210	204	16	12
GA	415	392	276	249	139	143
HI	8	16	8	16	0	0
IL	67	71	65	69	2	2
IN	464	484	454	473	10	11
IA	312	344				
ME	113	116				
MD	79	77	70	67	9	10
MI	124	124				
MN	224	245	215	236	9	9
MS	126	135	61	59	65	76
MO	146	158				
NE	161	201	161	201	0	0
NY	89	93				
NC	279	277	160	154	119	123
OH	444	511				
OK	32	74	22	47	10	27
OR	58	61	57	59	1	2
PA	479	509	466	491	13	18
SC	111	113	93	94	18	19
SD	61	41	61	41	0	0
TX	329	333	285	288	44	45
VA	79	80	41	39	38	41
WA	112	125				
WI	73	78				
30 Sts	5,904	6,162	5,087	5,273	817	889
0th Sts <u>3/</u>	360	357	301	295	59	62
US	6,264	6,519	5,388	5,568	876	951

1/ 1994 revised.

2/ Data by type of flock not shown for some States to avoid disclosing individual operations.

3/ Estimates for individual States are not available.

Egg Production: By Type, State, and United States,
January 1994-95 1/

State	Total Production		Table Eggs <u>2/</u>		Hatching Eggs <u>2/</u>	
	1994	1995	1994	1995	1994	1995
	Million Eggs					
AL	228	225	111	102	117	123
AR	319	313	154	134	165	179
CA	551	560				
CO	65	69				
CT	86	79				
FL	223	208	206	198	17	10
GA	408	375	267	230	141	145
HI	16	16	16	16	0	0
IL	60	69	59	67	1	2
IN	462	483	452	472	10	11
IA	312	339				
ME	114	116				
MD	73	77	63	66	10	11
MI	119	120				
MN	217	245	208	236	9	9
MS	122	130	56	55	66	75
MO	138	150				
NE	162	207	162	207	0	0
NY	89	90				
NC	274	269	155	142	119	127
OH	448	507				
OK	65	76	43	48	22	28
OR	58	58	56	56	2	2
PA	471	496	456	478	15	18
SC	108	113	91	94	17	19
SD	50	37	50	37	0	0
TX	332	324	288	277	44	47
VA	77	77	37	37	40	40
WA	115	124				
WI	74	73				
30 Sts	5,836	6,025	4,999	5,128	837	897
Oth Sts <u>3/</u>	350	349	294	290	56	59
US	6,186	6,374	5,293	5,418	893	956

1/ 1995 preliminary.

2/ Data by type of flock not shown for some States to avoid disclosing individual operations.

3/ Estimates for individual States are not available.

Forced Molt: Percent of All Layers by Month,
United States, 1994-95 1/

Month	Percent Being Molted		Percent with Molt Completed	
	1994	1995	1994	1995
	Percent			
Jan	4.5	4.6	22.4	23.8
Feb	5.4	6.4	21.4	23.6
Mar				
Apr				
May				
Jun				
Jul				
Aug				
Sep				
Oct				
Nov				
Dec				

1/ As of first of month.

Forced Molt: Percent of All Layers by State
and United States, 1994-95 1/

State	February			
	Percent Being Molted		Percent with Molt Completed	
	1994	1995	1994	1995
	Percent			
AL	5.5	3.0	14.0	14.5
AR	4.0	3.5	11.5	12.0
CA	10.5	13.5	41.0	44.5
CO	12.5	5.5	25.0	25.5
CT	1.5	3.5	12.5	14.5
FL	9.0	19.0	36.0	28.0
GA	2.5	5.0	21.0	22.5
HI	2.5	5.5	49.5	49.5
IL	10.0	3.5	22.5	26.0
IN	6.0	5.0	25.0	34.5
IA	4.0	7.5	25.0	32.5
ME	0.5	0.5	0.5	0.5
MD	8.5	9.0	15.0	23.0
MI	2.5	1.5	20.0	16.5
MN	10.0	7.0	34.0	27.0
MS	3.0	5.5	16.0	14.0
MO	3.5	3.0	15.0	24.5
NE	5.0	5.5	15.0	22.0
NY	3.0	3.0	2.5	9.0
NC	3.0	5.0	17.0	16.0
OH	2.5	6.0	11.0	12.0
OK	2.5	2.5	4.5	18.0
OR	11.5	12.5	18.0	34.5
PA	3.0	6.0	11.5	20.0
SC	11.5	8.0	24.5	27.5
SD	6.5	6.0	33.0	44.5
TX	4.5	6.0	24.5	22.0
VA	6.0	5.0	18.0	12.0
WA	4.0	5.5	47.0	39.0
WI	8.5	5.0	29.5	30.0
30 Sts	5.3	6.5	21.4	23.8
0th Sts <u>2/</u>	6.4	5.0	20.6	20.0
US	5.4	6.4	21.4	23.6

1/ As of first of month.

2/ Estimates for individual States are not available.

Hatchery Production: Eggs in Incubators, Chicks Hatched,
and Placements by Type, United States, January-February 1994-95

Item	1994	1995	1995 as % of 1994
	----- 1,000 -----		Percent
Egg-Type			
Eggs in Incubators on Feb 1	28,768	28,653	100
Chicks Hatched During Jan	32,816	31,527	96
Pullets Hatched During Jan for Intended:			
Placements in Hatchery Supply Flocks	197	236	120
7-18 Month Earlier <u>1/</u>	2,806	2,916	104
Broiler-Type			
Eggs in Incubators on Feb 1	504,769	536,954	106
Chicks Hatched During Jan	617,706	661,389	107
Pullets Hatched During Jan for Intended:			
Placements in Hatchery Supply Flocks	5,989	5,748	96
7-14 Months Earlier <u>2/</u>	42,665	47,272	111

1/ 1995 includes pullet chicks hatched Jul 1993 through Jun 1994.

2/ 1995 includes pullet chicks hatched Nov 1993 through Jun 1994.

Egg-Type Eggs in Incubators: By Region and United States,
February 1, 1994-95

Geographic Division	1994	1995	1995 as % of 1994
	----- 1,000 -----		Percent
North Atlantic	6,524	4,081	63
E North Central	7,170	6,606	92
W North Central	4,868	4,953	102
South Atlantic	3,374	5,214	155
South Central	3,262	3,875	119
West	3,570	3,924	110
US	28,768	28,653	100

Regional Listing:

North Atlantic = CT, ME, MA, NH, NJ, NY, PA, RI, VT.

E North Central = IL, IN, MI, OH, WI.

W North Central = IA, KS, MN, MO, NE, ND, SD.

South Atlantic = DE, FL, GA, MD, NC, SC, VA, WV.

South Central = AL, AR, KY, LA, MS, OK, TN, TX.

West = AK, AZ, CA, CO, HI, ID, MT, NM, NV, OR, UT, WA, WY.

Egg-Type Chicks Hatched: By State and United States, January 1994-95

State	January			Jan-Jan		
	1994	1995	1995 as % of 1994	1994	1995	1995 as % of 1994
	----- 1,000 -----		Percent	----- 1,000 -----		Percent
AR	1,190	1,079	91	1,190	1,079	91
FL	979	1,070	109	979	1,070	109
GA	1,488	1,814	122	1,488	1,814	122
IN	6,027	6,882	114	6,027	6,882	114
IA	2,362	2,516	107	2,362	2,516	107
KS	152	239	157	152	239	157
MN	2,176	1,683	77	2,176	1,683	77
MO	483	323	67	483	323	67
PA	4,741	3,247	68	4,741	3,247	68
Oth Sts <u>1/</u>	13,218	12,674	96	13,218	12,674	96
US	32,816	31,527	96	32,816	31,527	96

1/ Not published separately to avoid disclosing data for individual operations.

Egg-Type Chicks Hatched: By Month, United States, 1993-95

Month	By Months				Cumulative			
	1993	1994	1995	1995 as % of 1994	1993	1994	1995	1995 as % of 1994
	----- 1,000 -----			Percent	----- 1,000 -----			Percent
Jan	34,852	32,816	31,527	96	34,852	32,816	31,527	96
Feb	33,984	31,056			68,836	63,872		
Mar	38,232	33,335			107,068	97,207		
Apr	37,143	35,718			144,211	132,925		
May	36,741	35,179			180,952	168,104		
Jun	35,587	31,916			216,539	200,020		
Jul	33,980	30,260			250,519	230,280		
Aug	31,455	31,518			281,974	261,798		
Sep	31,775	30,855			313,749	292,653		
Oct	31,634	31,764			345,383	324,417		
Nov	30,073	25,432			375,456	349,849		
Dec	30,446	28,575			405,902	378,424		

Intended Placements: Egg-Type Pullet Chicks for Hatchery Supply
Flocks by Month and Total, United States, 1993-95 1/

Month	Pullet Chicks Hatched			1995 as % of 1994	Cumulative Potential Placements Relative to Current Supply Flocks 7-18 Months Earlier <u>2/</u>		
	1993	1994	1995		1993	1994	1995
	----- 1,000 -----	----- 1,000 -----	----- 1,000 -----		----- 1,000 -----	----- 1,000 -----	----- 1,000 -----
Jan	193	197	236	120	2,529	2,806	2,916
Feb	119	186			2,553	2,812	2,937
Mar	268	259			2,604	2,754	3,027
Apr	251	277			2,655	2,787	3,072
May	275	334			2,637	2,801	3,091
Jun	267	254			2,696	2,690	3,156
Jul	243	264			2,738	2,782	3,013
Aug	219	309			2,750	2,786	3,052
Sep	270	315			2,596	2,853	
Oct	251	270			2,678	2,844	
Nov	158	223			2,751	2,870	
Dec	268	125			2,764	2,929	
Total	2,782	3,013					

1/ Reported by leading breeders. Coverage may not be 100 percent. Includes expected pullet chicks from eggs sold during the preceding month at the rate of 125 pullet chicks per 30 dozen case of eggs.

2/ For Jan 1995, includes breeder pullet chicks hatched Jul 1993 through Jun 1994.

Broiler-Type Eggs In Incubators: By Region
and United States, February 1, 1994-95

Geographic Division	1994	1995	1995 as % of 1994
	----- 1,000 -----	----- 1,000 -----	Percent
North Atlantic	11,116	10,997	99
E North Central	5,061	5,744	113
W North Central	10,630	15,539	146
South Atlantic	200,708	213,633	106
South Central	256,073	269,603	105
West	21,181	21,438	101
US	504,769	536,954	106

Broiler-Type Chicks Hatched: By State
and United States, January 1994-95

State	January			Jan-Jan		
	1994	1995	1995 as % of 1994	1994	1995	1995 as % of 1994
	----- 1,000 -----		Percent	----- 1,000 -----		Percent
AL	88,902	94,615	106	88,902	94,615	106
AR	103,033	103,655	101	103,033	103,655	101
DE	15,237	17,083	112	15,237	17,083	112
FL	12,468	9,361	75	12,468	9,361	75
GA	87,714	96,026	109	87,714	96,026	109
MD	35,849	32,648	91	35,849	32,648	91
MS	49,204	55,842	113	49,204	55,842	113
NC	58,186	62,115	107	58,186	62,115	107
PA	11,495	11,244	98	11,495	11,244	98
SC	14,308	15,065	105	14,308	15,065	105
TX	35,804	37,672	105	35,804	37,672	105
VA	19,039	23,850	125	19,039	23,850	125
CA TN & WV	31,906	34,241	107	31,906	34,241	107
15 Sts 1/	563,145	593,417	105	563,145	593,417	105
OR & WA	5,763	5,509	96	5,763	5,509	96
Oth Sts 2/	48,798	62,463	128	48,798	62,463	128
US	617,706	661,389	107	617,706	661,389	107

1/ States in the weekly hatchery production estimating program.

2/ Not published separately to avoid disclosing data for individual operations.

Broiler Chicks Hatched: By Month, United States, 1993-95

Month	By Months				Cumulative			
	1993	1994	1995	1995 as % of 1994	1993	1994	1995	1995 as % of 1994
	----- 1,000 -----			Percent	----- 1,000 -----			Percent
Jan	598,698	617,706	661,389	107	598,698	617,706	661,389	107
Feb	547,731	557,767			1,146,429	1,175,473		
Mar	622,864	643,034			1,769,293	1,818,507		
Apr	600,669	629,180			2,369,962	2,447,687		
May	634,205	661,046			3,004,167	3,108,733		
Jun	619,301	645,998			3,623,468	3,754,731		
Jul	618,808	650,087			4,242,276	4,404,818		
Aug	612,180	658,127			4,854,456	5,062,945		
Sep	582,580	629,950			5,437,036	5,692,895		
Oct	583,979	621,204			6,021,015	6,314,099		
Nov	575,055	596,783			6,596,070	6,910,882		
Dec	623,255	658,456			7,219,325	7,569,338		

**Intended Placements: Broiler-Type Pullet Chicks for Hatchery
Supply Flocks by Month and Total, 1993-95 1/**

Month	Pullet Chicks Hatched			1995 as % of 1994	Cumulative Potential Placements Relative to Current Supply Flocks 7-14 Months Earlier <u>2/</u>		
	1993	1994	1995		1993	1994	1995
	----- 1,000 -----			Percent	----- 1,000 -----		
US Place- ments							
Jan	5,664	5,989	5,748	96	40,202	42,665	47,272
Feb	4,549	5,518			40,819	43,906	47,859
Mar	5,678	6,301			40,908	44,486	48,254
Apr	5,531	6,101			41,133	43,943	48,601
May	5,944	6,266			41,866	44,907	49,425
Jun	5,568	5,911			41,358	44,746	48,943
Jul	5,967	6,104			40,871	44,884	49,255
Aug	5,585	6,064			41,704	44,929	48,737
Sep	5,121	6,336			41,083	44,879	
Oct	5,513	6,342			41,330	45,213	
Nov	5,517	5,819			41,780	45,729	
Dec	5,669	6,413			42,504	46,874	
Annual Total	66,306	73,164					
Total Place- ments <u>3/</u>							
Jan	7,098	7,168	7,038	98			
Feb	5,664	6,829					
Mar	6,909	7,544					
Apr	6,420	7,234					
May	7,182	7,394					
Jun	6,723	7,153					
Jul	7,114	7,146					
Aug	6,587	7,290					
Sep	6,177	7,545					
Oct	6,634	7,959					
Nov	6,718	7,251					
Dec	6,949	7,908					
Annual Total	80,175	88,421					

1/ Reported by leading breeders. Coverage may not be 100 percent. Includes expected pullet chicks from eggs sold during the preceding month at the rate of 125 pullet chicks per 30 dozen case of eggs.

2/ For Jan 1995, includes breeder pullet chicks hatched Nov 1993 through Jun 1994.

3/ U.S. production of intended placements worldwide.

Data Sources: Primary data for the "Chickens and Eggs" report are collected from weekly and/or monthly questionnaires sent to producers. An attempt is made to collect information for the layer and egg estimates from all known contractors and independent producers with over 30,000 table egg layers in their flock. Coverage for table egg operations with less than 30,000 table egg layers are estimated each month based on data reported in December. Approximately 910 contractors, independent egg producers and started pullet operations are contacted each month. An attempt is made to collect hatchery information from all known hatcheries. Approximately 340 hatcheries are contacted on a weekly and/or monthly basis.

Revisions: Revisions are generally the result of late or corrected data. Each report will contain revisions for the previous month for layer and egg estimates. Additionally, revisions that are needed after the monthly report will be made at the end of the marketing year and published in the respective annual summaries for Layers and Egg, and Hatchery Production.

Procedures and Reliability: Operations are mailed a questionnaire and given adequate time to respond by mail. Those that do not respond by mail are phoned. Great care is exercised to ensure that operations are accounted for during each survey period. However, normally there are missing reports that must be accounted for in the estimates.

Sound statistical methodology is employed to derive the estimates from the reported data. All data are checked for unusual values. Each operation's data are compared to their own past operating profile and also compared to trends from other operations. Data for missing operations are estimated based on similar operations or historical data. Survey data are subject to non-sampling errors such as omissions and mistakes in reporting and in processing the data. While these errors cannot be measured directly, they are minimized by carefully reviewing all reported data for consistency and reasonableness.

Egg-type chicks hatched are comprised of all chicks of egg-type domesticated breeds including males, chicks destined for hatchery supply flocks, and research purposes. The relationship of chicks hatched to chicken inventory and poultry marketings are carefully monitored. The disposition of egg-type chicks hatched prior to placement into the laying flock can vary significantly, which can make comparisons to changes in layer inventory inconsistent over time.

Intended placement data, reported by leading breeders, include pullet chicks expected from eggs sold the preceding month. The breeders in this report account for a large percentage of replacement pullets for hatchery supply flocks. Production of replacement pullets by these breeders provide an indication of the potential number of pullets available for addition to hatchery egg supply flocks several months before the pullets will actually move into the flocks.

The next "Chickens and Eggs" report will be released at 3 p.m. ET on March 24, 1995.

The United States Department of Agriculture (USDA) prohibits discrimination in its programs on the basis of race, color, national origin, sex, religion, age, disability, political beliefs, and marital or familial status. Persons with disabilities who require alternative means for communication of program information (braille, large print, audiotape, etc.) should contact the USDA Office of Communications at (202) 720-5881 (voice) or (202) 720-7808 (TDD).

To file a complaint, write the Secretary of Agriculture, USDA, Washington, D.C., 20250, or call (202) 720-7327 (voice) or (202) 720-1127 (TDD). USDA is an equal employment opportunity employer.

☒ **Want to subscribe?** ☒ **Time to renew?**

Subscribe to **Chickens and Eggs** today! If you already subscribe to this timely periodical, note that expiration information about your subscription appears on the top line of your mailing label. **Expiration information will appear in one of two formats: 1-PEC-2 (this means you have TWO issues remaining in your subscription) or APR95 (expiration date is April 1995).** Disregard this notice if no renewal information appears. Call **1-800-999-6779**, and tell us whether you want to subscribe or renew, or return this form to: **ERS-NASS, 341 Victory Drive, Herndon, VA 22070.**

Chickens and Eggs

- ☐ Yes! I want to **start** my subscription.
☐ Yes! I want to **renew** my subscription.

	1 Year	2 Years	3 Years
Domestic	<input type="checkbox"/> \$36.00	<input type="checkbox"/> \$70.00	<input type="checkbox"/> \$105.00
Foreign	<input type="checkbox"/> \$45.00	<input type="checkbox"/> \$87.50	<input type="checkbox"/> \$131.25

New subscribers:

Name: _____
Address: _____
City, State, Zip: _____
Daytime phone: (____) _____

Renewals:

ATTACH MAILING LABEL HERE

Payment method:

- ☐ Bill me (domestic orders only). Use purchase orders, checks drawn on U.S. banks, cashier's checks, or international money orders. **Make payable to ERS-NASS.**
☐ Enclosed is \$_____.

Credit card orders: ☐ MasterCard ☐ Visa Total charges \$_____

Credit card number:

Card expiration date:
Month/Year

For fastest service, call our toll-free order desk 1-800-999-6779, in the U.S. and Canada; other areas please call 703-834-0125, or FAX this page to 703-834-0110.

Statistical Bulletin Order Form

The U.S. Department of Agriculture's National Agricultural Statistics Service will publish a series of 18 Statistical Bulletins (SB895-SB912) containing final estimates for the 1987-1993 period. Data previously published during the 1987-1993 period have been reviewed against survey indications and administrative data such as those from exports, imports, slaughter, crushings, and the 1992 Census of Agriculture. These bulletins are a continuation of Statistical Bulletins (SB792-SB802) published in 1988 and 1989.

QUANTITY (\$10 each)		BULLETIN NUMBER	STATISTICAL BULLETIN	RELEASE DATE
PAPER	DISKETTES			
		SB-904	Hogs and Pigs, 1988-1992	12/16/94
		SB-896	Field Crops, 1987-1992	12/19/94
		SB-897	Stocks of Grains, Oilseeds, and Hay, 1988-1993	12/19/94
		SB-898	Rice Stocks, 1988-1993	12/19/94
		SB-902	Vegetables, 1987-1992	01/06/95
		SB-906	Sheep and Goats, 1989-1993	01/13/95
		SB-908	Chicken and Eggs, 1988-1993	01/18/95
		SB-905	Cattle, 1989-1993	01/20/95
		SB-909	Milk, 1988-1992	02/02/95
		SB-911	Turkeys, 1988-1993	03/23/95
		SB-912	Honey, 1986-1992	03/28/95
		SB-907	Meat Animals, PDI, 1988-1992	03/30/95
		SB-910	Poultry Production and Value, 1988-1993	05/12/95
		SB-900	Noncitrus Fruits and Nuts, 1987-1992	06/05/95
		SB-895	Farms and Land in Farms, 1987-1993	07/28/95
		SB-899	Citrus Fruits, 1987-1992	08/07/95
		SB-901	Potatoes and Sweetpotatoes, 1987-1992	08/17/95
		SB-903	Crop Values, 1987-1992	09/25/95
		Add 25 % for shipment to foreign addresses (includes Canada) (Total Bulletins Ordered X \$10 = TOTAL COST \$)		

Publications may be obtained in hard copy or on diskette by calling the ERS-NASS order desk toll free at 1-800-999-6779 or by mail from ERS-NASS, 341 Victory Drive, Herndon, VA 22070.

Bulletins cost \$10.00 each for paper products or 3.5" ASCII diskettes. To order bulletins by mail, return this form along with your **check payable to ERS-NASS**. The bulletins will also be available on Internet through the Mann Library at Cornell University (gopher usda.mannlib.cornell.edu 70) at no charge.

Thank you for your order.

Name: _____
 Address: _____
 City, State, Zip: _____
 Phone: _____

