

Chickens and Eggs



United States
Department of
Agriculture

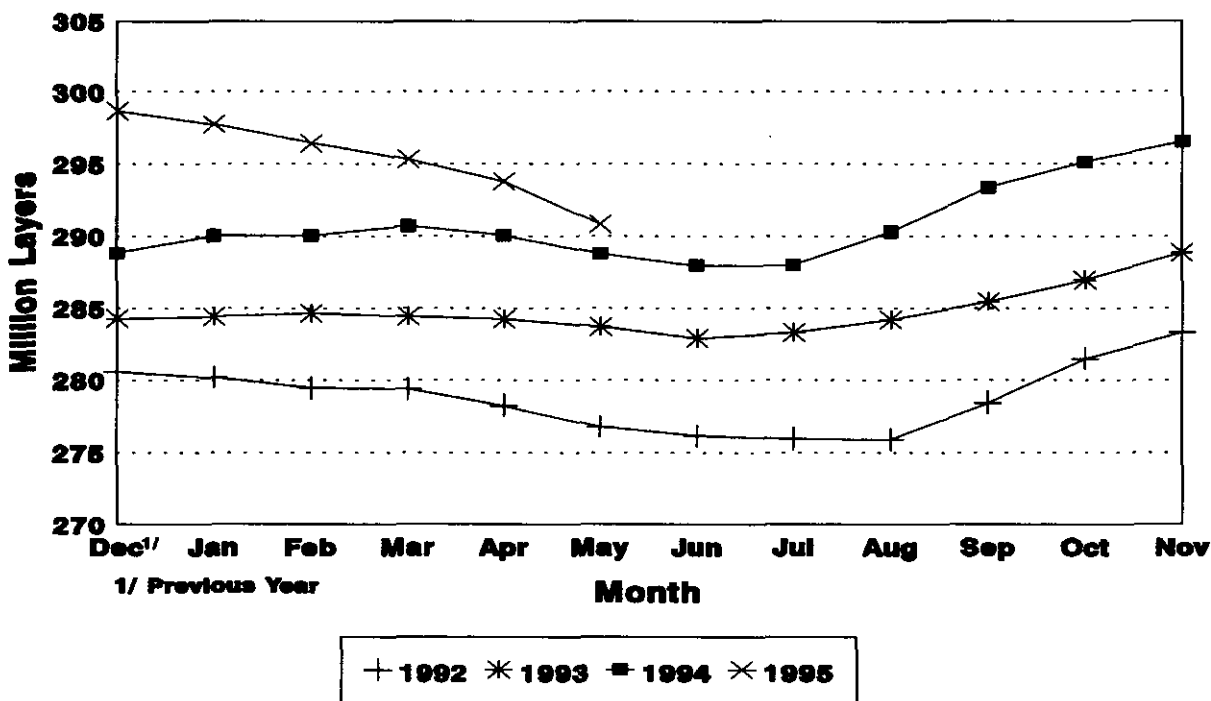
Washington, D.C.

Released June 23, 1995, by the Agricultural Statistics Board. Estimates refer to April, May, and June 1995.

May Egg Production Up 1 Percent

U.S. egg production totaled 6.24 billion during May 1995, up 1 percent from the 6.19 billion produced May 1994. Production included 5.26 billion table eggs and 980 million hatching egg type, of which 914 million were broiler-type and 66.0 million were egg-type. The total number of layers during May 1995 averaged 291 million, up 1 percent from the 289 million during May 1994. May egg production per 100 layers was 2,147 eggs, compared with 2,143 in May 1994.

Average Number of Layers United States, 1992 - 95



For information call Joel D. Moore at (202) 720-3244. Office hours are 8:00 a.m. to 4:30 p.m. ET.

All layers in the U.S. on June 1, 1995, totaled 289 million, compared with 288 million a year ago. The 289 million layers consisted of 237 million layers producing table or commercial type eggs, 49.2 million layers producing broiler-type hatching eggs, and 2.78 million layers producing egg-type hatching eggs. Rate of lay per day on June 1, 1995, averaged 69.4 eggs per 100 layers, up slightly from the 69.2 eggs a year ago.

Laying flocks in the 30 major egg production States produced 5.90 billion eggs during May, up 1 percent from May 1994. The average number of layers during May, at 275 million, was also up 1 percent from the year earlier.

Individual State estimates are available for the 30 major egg producing States. These States are listed on page 8 of this release and account for approximately 94 percent of the total U.S. egg production. Production for the other States are grouped into an "Other States" category and combined with the 30 States published individually to obtain a U.S. estimate. Individual State estimates for "Other States" are available annually in the "**Layers and Egg Production**" report.

Egg-Type Chicks Hatched Up 3 Percent

Egg-type chicks **hatched** during May totaled 36.3 million, up 3 percent from May 1994. **Eggs in incubators** totaled 30.3 million on June 1, 1995, up 2 percent from a year ago.

Domestic placements of **egg-type pullet chicks for future hatchery supply flocks** by leading breeders totaled 193,000 during May 1995, down 42 percent from the 334,000 of May 1994.

Broiler Hatch Up 5 Percent

The May 1995 **hatch** of broiler-type chicks, at 690 million, was 5 percent above May of the previous year. There were 562 million **eggs in incubators** on June 1, 1995, up 3 percent from a year earlier.

Leading breeders placed 6.14 million **broiler-type pullet chicks for future domestic hatchery supply flocks** during May 1995, down 2 percent from May 1994.

For information call Tom Kruchten at (202) 690-4870

Layers: Average Number During the Month.
United States, 1992-1995 1/

Month	1992	1993	1994	1995
1,000 Layers				
Dec 2/	280,572	284,267	288,832	298,709
Jan	280,171	284,398	290,041	297,805
Feb	279,450	284,638	290,047	296,477
Mar	279,373	284,405	290,719	295,422
Apr	278,284	284,234	290,073	293,824
May	276,790	283,694	288,784	290,847
Jun	276,142	282,914	287,974	
Jul	275,953	283,324	287,990	
Aug	275,891	284,192	290,321	
Sep	278,461	285,418	293,381	
Oct	281,573	286,948	295,172	
Nov	283,305	288,875	296,547	

1/ Data are for chart on cover page.

2/ December preceding year.

Eggs: Production During the Month by Type.
United States, 1994-95

Month	Total Eggs		Table Eggs		Hatching Eggs	
	1994	1995	1994	1995	1994	1995
Million Eggs						
Dec 1/	6,264	6,519	5,388	5,568	876	951
Jan	6,186	6,374	5,293	5,418	893	956
Feb	5,598	5,720	4,775	4,856	823	864
Mar	6,320	6,448	5,404	5,490	916	958
Apr	6,073	6,173	5,177	5,234	896	939
May	6,189	6,244	5,249	5,264	940	980
Jun	5,992		5,085		907	
Jul	6,205		5,269		936	
Aug	6,272		5,336		936	
Sep	6,125		5,218		907	
Oct	6,377		5,446		931	
Nov	6,265		5,358		907	
During Year:	73,866	37,478	62,998	31,830	10,868	5,648

1/ December preceding year.

Eggs and Layers: Layers on Hand and Eggs Produced by Type,
and Forced Molt, United States, April-May 1994-95

Item	1994	1995	1995 as % of 1994
<hr/>			
Layers During Apr (1,000)			
All Layers	290.073	293.824	101
Table Egg Type	239.635	241.343	101
Hatching Egg Type	50.438	52.481	104
Broiler-Type Hatching	47.639	49.578	104
Egg-Type Hatching	2.799	2.903	104
Eggs per 100 Layers During Apr (Number)			
All Layers	2.094	2.101	100
Table Egg Type	2.160	2.169	100
Hatching Egg Type	1.776	1.789	101
Broiler-Type Hatching	1.755	1.761	100
Egg-Type Hatching	2.144	2.274	106
Eggs Produced During Apr (Million)			
All Layers	6.073	6.173	102
Table Egg Type	5.177	5.234	101
Hatching Egg Type	896	939	105
Broiler-Type Hatching	836	873	104
Egg-Type Hatching	60	66	110
Layers on May 1 (1,000)			
All Layers	289.125	293.008	101
Table Egg Type	238.514	240.381	101
Hatching Egg Type	50.611	52.627	104
Broiler-Type Hatching	47.855	49.769	104
Egg-Type Hatching	2.756	2.858	104
Eggs per 100 Layers on May 1 (Number)			
All Layers	69.0	69.1	100
Table Egg Type	70.9	71.1	100
Hatching Egg Type	59.8	60.2	101
Broiler-Type Hatching	58.8	59.2	101
Egg-Type Hatching	76.0	77.2	102
Forced Molt Layers, May 1			
Percent Being Molted	5.6	5.8	104
Percent with Molt Completed	20.2	22.3	110

Eggs and Layers: Layers on Hand and Eggs Produced by Type,
and Forced Molt, United States, May-June 1994-95

Item	1994	1995 1/	1995 as % of 1994
Layers During May (1,000)			
All Layers	288,784	290,847	101
Table Egg Type	238,185	238,547	100
Hatching Egg Type	50,599	52,300	103
Broiler-Type Hatching	47,823	49,477	103
Egg-Type Hatching	2,776	2,823	102
Eggs per 100 Layers During May (Number)			
All Layers	2,143	2,147	100
Table Egg Type	2,204	2,207	100
Hatching Egg Type	1,858	1,874	101
Broiler-Type Hatching	1,834	1,847	101
Egg-Type Hatching	2,269	2,338	103
Eggs Produced During May (Million)			
All Layers	6,189	6,244	101
Table Egg Type	5,249	5,264	100
Hatching Egg Type	940	980	104
Broiler-Type Hatching	877	914	104
Egg-Type Hatching	63	66	105
Layers on Jun 1 (1,000)			
All Layers	288,398	288,642	100
Table Egg Type	237,831	236,689	100
Hatching Egg Type	50,567	51,953	103
Broiler-Type Hatching	47,781	49,174	103
Egg-Type Hatching	2,786	2,779	100
Eggs per 100 Layers on Jun 1 (Number)			
All Layers	69.2	69.4	100
Table Egg Type	71.2	71.3	100
Hatching Egg Type	60.0	60.8	101
Broiler-Type Hatching	59.1	59.9	101
Egg-Type Hatching	75.3	75.3	100
Forced Molt Layers, Jun 1			
Percent Being Molting	5.6	6.0	107
Percent with Molt Completed	21.4	22.9	107

1/ Preliminary.

Eggs and Layers: Layers on Hand and Eggs Produced by Type, and Forced Molt, April-May, 30 Selected States, 1994-95^{1/}

Item	1994	1995 1/	1995 as % of 1994
Layers During Apr (1,000)			
All Layers	273,750	277,632	101
Table Egg Type	226,489	228,618	101
Hatching Egg Type	47,261	49,014	104
Broiler-Type Hatching	44,627	46,187	103
Egg-Type Hatching	2,634	2,827	107
Eggs per 100 Layers During Apr (Number)			
All Layers	2,093	2,102	100
Table Egg Type	2,160	2,169	100
Hatching Egg Type	1,773	1,791	101
Broiler-Type Hatching	1,750	1,760	101
Egg-Type Hatching	2,164	2,299	106
Eggs Produced During Apr (Million)			
All Layers	5,730	5,836	102
Table Egg Type	4,892	4,958	101
Hatching Egg Type	838	878	105
Broiler-Type Hatching	781	813	104
Egg-Type Hatching	57	65	114
Layers on May 1 (1,000)			
All Layers	272,710	276,879	102
Table Egg Type	225,360	227,778	101
Hatching Egg Type	47,350	49,101	104
Broiler-Type Hatching	44,768	46,326	103
Egg-Type Hatching	2,582	2,775	107
Eggs per 100 Layers on May 1 (Number)			
All Layers	68.9	69.2	100
Table Egg Type	70.9	71.1	100
Hatching Egg Type	59.6	60.2	101
Broiler-Type Hatching	58.7	59.2	101
Egg-Type Hatching	75.6	77.0	102
Forced Molt Layers, May 1			
Percent Being Molted	5.6	5.8	104
Percent with Molt Completed	20.2	22.3	110
Pullets Less Than 20 Weeks of Age, May 1 (1,000)	77,623	71,463	92
Pullets Added During Apr (1,000)	20,448	20,094	98
Layers Sold During Apr (1,000)	16,723	17,794	106
Layers Died, Destroyed, or Disappeared For Any Reason During Apr (1,000)	2,680	2,784	104

1/ The 30 States are listed in the table on page 8.

Eggs and Layers: Layers on Hand and Eggs Produced by Type, and Forced Molt, May-June, 30 Selected States, 1994-95 1/

Item	1994	1995 2/	1995 as % of 1994
Layers During May (1,000)			
All Layers	272,400	274,955	101
Table Egg Type	225,063	226,165	100
Hatching Egg Type	47,337	48,790	103
Broiler-Type Hatching	44,722	46,047	103
Egg-Type Hatching	2,615	2,743	105
Eggs per 100 Layers During May (Number)			
All Layers	2,142	2,146	100
Table Egg Type	2,202	2,206	100
Hatching Egg Type	1,859	1,867	100
Broiler-Type Hatching	1,834	1,839	100
Egg-Type Hatching	2,294	2,333	102
Eggs Produced During May (Million)			
All Layers	5,836	5,900	101
Table Egg Type	4,956	4,989	101
Hatching Egg Type	880	911	104
Broiler-Type Hatching	820	847	103
Egg-Type Hatching	60	64	107
Layers on Jun 1 (1,000)			
All Layers	272,060	273,001	100
Table Egg Type	224,752	224,537	100
Hatching Egg Type	47,308	48,464	102
Broiler-Type Hatching	44,669	45,761	102
Egg-Type Hatching	2,639	2,703	102
Eggs per 100 Layers on Jun 1 (Number)			
All Layers	69.2	69.3	100
Table Egg Type	71.1	71.2	100
Hatching Egg Type	60.0	60.5	101
Broiler-Type Hatching	59.1	59.6	101
Egg-Type Hatching	75.0	75.0	100
Forced Molt Layers, Jun 1			
Percent Being Molted	5.5	6.1	111
Percent with Molt Completed	21.5	22.9	107
Pullets Less Than 20 Weeks of Age, Jun 1 (1,000)	77,387	72,834	94
Pullets Added During May (1,000)	19,872	18,662	94
Layers Sold During May (1,000)	15,928	17,692	111
Layers Died, Destroyed, or Disappeared For Any Reason During May (1,000)	2,713	3,114	115

1/ Preliminary.

2/ The 30 States are listed in the table on page 8.

Layers and Eggs: Layers on Hand and Eggs Produced by State
and United States, During April 1994-95

State	Table Egg Layers in Flocks 30,000 and Above		All Layers 1/		Eggs per 100 for All Layers 1/	
	1994	1995	1994	1995	1994	1995
	1,000		Number			
AL	5.094	4.641	11,571	11,630	1,962	1,917
AR	7.083	5,890	17,016	15,965	1,863	1,867
CA	25,183	24,962	25,851	25,536	2,097	2,091
CO	2,684	2,556	3,250	3,117	2,000	2,117
CT	3,400	3,412	3,607	3,596	2,135	2,225
FL	8,735	8,284	9,566	8,927	2,195	2,196
GA	10,888	10,184	18,620	17,921	2,041	2,070
HI	743	712	821	758	2,010	2,058
IL	2,970	2,581	3,151	2,774	2,158	2,199
IN	19,921	20,374	20,817	21,255	2,128	2,150
IA	13,620	14,925	14,400	15,790	2,160	2,103
ME	5,022	4,890	5,201	5,049	2,250	2,238
MD	2,617	3,388	3,134	3,953	2,106	2,125
MI	4,892	4,968	5,200	5,250	2,178	2,205
MN	9,593	10,218	10,456	11,078	2,142	2,130
MS	2,654	2,348	6,527	6,254	1,961	1,951
MO	6,008	5,765	6,653	6,628	2,044	2,127
NE	7,625	8,875	7,775	9,025	2,094	2,223
NY	3,427	3,379	3,768	3,727	2,256	2,254
NC	6,520	6,400	13,873	14,030	1,889	1,882
OH	20,474	21,878	20,860	22,256	2,234	2,233
OK	2,000	2,043	3,570	3,761	1,793	1,968
OR	2,539	2,366	2,738	2,572	2,191	2,216
PA	19,170	19,910	20,541	21,295	2,239	2,231
SC	4,091	4,071	5,116	5,065	2,209	2,152
SD	1,728	1,553	2,005	1,793	2,139	2,157
TX	12,607	12,381	15,801	15,776	2,025	2,035
VA	1,555	1,632	3,764	3,841	1,993	1,953
WA	4,582	5,279	4,836	5,560	2,213	2,176
WI	2,755	2,905	3,262	3,450	2,177	2,116
30 Sts	220,180	222,770	273,750	277,632	2,093	2,102
Oth						
Sts 2/	11,681	11,425	16,323	16,192	2,101	2,081
US	231,861	234,195	290,073	293,824	2,094	2,101

1/ Includes all layers and eggs produced in both table egg and hatching egg flocks regardless of size.

2/ Estimates for individual States are not available.

Layers and Eggs: Layers on Hand and Eggs Produced by State
and United States, During May 1994-95 1/

State	Table Egg Layers in Flocks 30,000 and Above		All Layers 2/		Eggs per 100 for All Layers 2/	
	1994	1995	1994	1995	1994	1995
	----- 1,000 -----		----- Number -----			
AL	4,979	4,523	11,469	11,460	2,014	1,990
AR	7,018	5,920	17,012	15,999	1,952	1,919
CA	25,233	24,348	25,900	24,893	2,127	2,141
CO	2,629	2,448	3,190	2,983	2,069	2,213
CT	3,385	3,379	3,588	3,561	2,202	2,218
FL	8,688	7,930	9,451	8,597	2,201	2,233
GA	10,337	9,589	18,068	17,306	2,048	2,080
HI	749	711	827	760	2,012	2,034
IL	2,918	2,595	3,103	2,795	2,224	2,147
IN	19,808	20,445	20,664	21,303	2,197	2,187
IA	13,643	14,778	14,426	15,656	2,190	2,159
ME	4,998	4,810	5,173	4,972	2,358	2,333
MD	2,558	3,362	3,027	3,899	2,279	2,231
MI	4,900	4,938	5,200	5,216	2,254	2,263
MN	9,293	10,283	10,151	11,143	2,167	2,145
MS	2,627	2,299	6,460	6,247	2,043	2,017
MO	5,925	5,770	6,551	6,670	2,045	2,174
NE	7,700	8,875	7,850	9,025	2,117	2,229
NY	3,338	3,374	3,670	3,711	2,289	2,290
NC	6,524	6,232	13,983	13,710	1,931	1,955
OH	20,865	21,676	21,240	22,058	2,321	2,298
OK	2,000	2,023	3,605	3,761	1,914	2,021
OR	2,503	2,493	2,697	2,698	2,225	2,372
PA	19,080	19,465	20,435	20,810	2,276	2,268
SC	4,061	4,069	5,098	5,040	2,275	2,222
SD	1,730	1,608	2,008	1,855	2,120	2,226
TX	12,344	12,548	15,601	15,951	2,064	2,019
VA	1,547	1,580	3,781	3,815	2,063	2,018
WA	4,624	5,349	4,866	5,631	2,281	2,255
WI	2,798	2,900	3,306	3,430	2,178	2,099
30 Sts	218,802	220,320	272,400	274,955	2,142	2,146
Oth						
Sts 3/	11,672	11,082	16,384	15,892	2,155	2,165
US	230,474	231,402	288,784	290,847	2,143	2,147

1/ 1995 preliminary.

2/ Includes all layers and eggs produced in both table egg and hatching egg flocks regardless of size.

3/ Estimates for individual States are not available.

Egg Production: By Type, State, and United States.
April 1994-95

State	Total Production		Table Eggs 1/		Hatching Eggs 1/	
	1994	1995	1994	1995	1994	1995
	Million Eggs					
AL	227	223	113	100	114	123
AR	317	298	148	126	169	172
CA	542	534				
CO	65	66				
CT	77	80				
FL	210	196	193	185	17	11
GA	380	371	240	227	140	144
HI	17	16	17	16	0	0
IL	68	61	67	60	1	1
IN	443	457	432	447	11	10
IA	311	332				
ME	117	113				
MD	66	84	58	75	8	9
MI	113	116				
MN	224	236	215	226	9	10
MS	128	122	60	53	68	69
MO	136	141				
NE	163	201	163	201	0	0
NY	85	84				
NC	262	264	143	139	119	125
OH	466	497				
OK	64	74	42	48	22	26
OR	60	57	58	55	2	2
PA	460	475	443	458	17	17
SC	113	109	95	91	18	18
SD	43	39	43	39	0	0
TX	320	321	276	272	44	49
VA	75	75	39	37	36	38
WA	107	121				
WI	71	73				
30 Sts	5,730	5,836	4,892	4,958	838	878
Oth Sts 2/	343	337	285	276	58	61
US	6,073	6,173	5,177	5,234	896	939

1/ Data by type of flock not shown for some States to avoid disclosing individual operations.

2/ Estimates for individual States are not available.

Egg Production: By Type, State, and United States.
May 1994-95 1/

State	Total Production		Table Eggs 2/		Hatching Eggs 2/	
	1994	1995	1994	1995	1994	1995
	Million Eggs					
AL	231	228	113	100	118	128
AR	332	307	154	125	178	182
CA	551	533				
CO	66	66				
CT	79	79				
FL	208	192	191	180	17	12
GA	370	360	224	211	146	149
HI	17	16	17	16	0	0
IL	69	60	68	59	1	1
IN	454	466	443	456	11	10
IA	316	338				
ME	122	116				
MD	69	87	61	78	8	9
MI	117	118				
MN	220	239	211	229	9	10
MS	132	126	60	53	72	73
MO	134	145				
NE	166	201	166	201	0	0
NY	84	85				
NC	270	268	144	140	126	128
OH	493	507				
OK	69	76	45	49	24	27
OR	60	64	59	62	1	2
PA	465	472	448	454	17	18
SC	116	112	97	94	19	18
SD	43	41	43	41	0	0
TX	322	322	276	271	46	51
VA	78	77	38	37	40	40
WA	111	127				
WI	72	72				
30 Sts	5,836	5,900	4,956	4,989	880	911
Oth Sts 3/	353	344	293	275	60	69
US	6,189	6,244	5,249	5,264	940	980

1/ 1995 preliminary.

2/ Data by type of flock not shown for some States to avoid disclosing individual operations.

3/ Estimates for individual States are not available.

Forced Molt: Percent of All Layers by Month.
United States, 1994-95 1/

Month	Percent Being Molted		Percent with Molt Completed	
	1994	1995	1994	1995
	Percent			
Jan	4.5	4.6	22.4	23.8
Feb	5.4	6.4	21.4	23.6
Mar	3.7	4.8	21.1	24.0
Apr	2.7	3.4	21.0	23.7
May	5.6	5.8	20.2	22.3
Jun	5.6	6.0	21.4	22.9
Jul				
Aug				
Sep				
Oct				
Nov				
Dec				

1/ As of first of month.

Forced Molt: Percent of All Layers by State
and United States, 1994-95 1/

State	June			
	Percent Being Molted		Percent with Molt Completed	
	1994	1995	1994	1995
	Percent			
AL	5.0	4.0	14.0	11.0
AR	2.5	6.5	13.0	10.0
CA	7.5	11.0	46.5	40.5
CO	6.0	8.0	27.0	18.0
CT	4.5	5.0	13.5	11.0
FL	8.0	11.5	37.0	35.0
GA	8.5	7.5	15.5	18.5
HI	8.5	11.0	45.5	46.0
IL	3.0	15.0	25.0	26.5
IN	7.5	2.5	26.5	32.0
IA	5.5	9.0	27.0	32.0
ME	0.5	1.0	0.0	0.5
MD	2.5	5.0	23.0	25.0
MI	5.5	2.5	7.0	20.0
MN	8.5	5.0	27.5	26.0
MS	3.5	3.0	15.5	15.5
MO	1.0	3.5	22.0	21.0
NE	5.0	9.5	15.0	19.0
NY	3.5	2.0	6.5	7.0
NC	3.5	2.0	15.0	14.5
OH	3.5	5.5	11.0	15.5
OK	0.0	3.0	6.0	14.0
OR	7.0	5.5	26.5	38.0
PA	5.0	4.0	13.0	21.5
SC	5.0	6.5	23.0	33.5
SD	8.0	0.5	40.0	15.5
TX	8.5	9.0	22.5	20.5
VA	3.0	2.5	12.0	16.5
WA	4.5	5.0	41.0	43.5
WI	6.5	7.5	25.5	24.5
30 Sts	5.5	6.1	21.5	22.9
Oth Sts 2/	7.1	3.9	20.0	23.2
US	5.6	6.0	21.4	22.9

1/ As of first of month.

2/ Estimates for individual States are not available.

Hatchery Production: Eggs in Incubators, Chicks Hatched,
and Placements by Type, United States, May-June 1994-95

Item	1994	1995	1995 as % of 1994
	1,000		Percent
Egg-Type			
Eggs in Incubators on Jun 1	29,807	30,334	102
Chicks Hatched During May	35,336	36,335	103
Chicks Hatched Jan thru May	168,794	168,462	100
Pullets Hatched During May for Intended:			
Placements in Hatchery Supply Flocks	334	193	58
7-18 Month Earlier 1/	2,801	3,091	110
Broiler-Type			
Eggs in Incubators on Jun 1	543,629	562,055	103
Chicks Hatched During May	658,690	689,650	105
Chicks Hatched Jan thru May	3,102,410	3,289,707	106
Pullets Hatched During May for Intended:			
Placements in Hatchery Supply Flocks	6,266	6,135	98
7-14 Months Earlier 2/	44,907	49,425	110

1/ 1995 includes pullet chicks hatched Nov 1993 through Oct 1994.

2/ 1995 includes pullet chicks hatched Mar 1994 through Oct 1994.

Egg-Type Eggs in Incubators: By Region and United States,
June 1, 1994-95

Geographic Division	1994	1995	1995 as % of 1994
	1,000		Percent
North Atlantic	5,056	4,520	89
E North Central	7,574	7,878	104
W North Central	5,056	5,315	105
South Atlantic	4,109	4,983	121
South Central	3,740	2,843	76
West	4,272	4,795	112
US	29,807	30,334	102

Regional Listing:

North Atlantic = CT, ME, MA, NH, NJ, NY, PA, RI, VT.

E North Central = IL, IN, MI, OH, WI.

W North Central = IA, KS, MN, MO, NE, ND, SD.

South Atlantic = DE, FL, GA, MD, NC, SC, VA, WV.

South Central = AL, AR, KY, LA, MS, OK, TN, TX.

West = AK, AZ, CA, CO, HI, ID, MT, NM, NV, OR, UT, WA, WY.

Egg-Type Chicks Hatched: By State and United States;
May 1994-95

State	May			Jan-May		
	1994	1995	1995 as % of 1994	1994	1995	1995 as % of 1994
	----- 1,000 -----		Percent	----- 1,000 -----		Percent
AR	902	1,417	157	5,832	5,826	100
FL	1,063	1,097	103	5,527	4,973	90
GA	2,105	2,138	102	8,518	9,128	107
IN	7,021	7,954	113	32,811	35,364	108
IA	2,525	2,054	81	11,897	12,248	103
KS	392	182	46	1,389	1,132	81
MN	2,418	2,323	96	10,557	10,569	100
MO	651	611	94	2,794	2,407	86
PA	4,536	3,930	87	22,722	17,094	75
Oth Sts 1/	13,723	14,629	107	66,747	69,721	104
US	35,336	36,335	103	168,794	168,462	100

1/ Not published separately to avoid disclosing data for individual operations.

Egg-Type Chicks Hatched: By Month, United States, 1993-95

Month:	By Months				Cumulative			
	1993	1994	1995	1995 as % of 1994	1993	1994	1995	1995 as % of 1994
	----- 1,000 -----			Percent	----- 1,000 -----			Percent
Jan	34,855	33,212	31,527	95	34,855	33,212	31,527	95
Feb	34,009	31,086	31,693	102	68,864	64,298	63,220	98
Mar	38,264	33,492	34,806	104	107,128	97,790	98,026	100
Apr	37,163	35,668	34,101	96	144,291	133,458	132,127	99
May	36,742	35,336	36,335	103	181,033	168,794	168,462	100
Jun	35,587	31,986			216,620	200,780		
Jul	33,980	29,613			250,600	230,393		
Aug	31,455	31,295			282,055	261,688		
Sep	31,775	30,873			313,830	292,561		
Oct	31,634	31,766			345,464	324,327		
Nov	30,074	25,475			375,538	349,802		
Dec	30,448	29,072			405,986	378,874		

Intended Placements: Egg-Type Pullet Chicks for Hatchery Supply
Flocks by Month and Total, United States, 1993-95 1/

Month	Pullet Chicks Hatched				Cumulative Potential Placements Relative to Current Supply Flocks 7-18 Months Earlier 2/		
	1995 as % of:				1994		
	1993	1994	1995		1993	1994	1995
	1,000				Percent	1,000	
Jan	193	197	236	120	2,529	2,806	2,916
Feb	119	186	251	135	2,553	2,812	2,937
Mar	268	259	356	137	2,604	2,754	3,027
Apr	251	277	317	114	2,655	2,787	3,072
May	275	334	193	58	2,637	2,801	3,091
Jun	267	254			2,696	2,690	3,156
Jul	243	264			2,738	2,782	3,013
Aug	219	309			2,750	2,786	3,052
Sep	270	315			2,596	2,853	3,117
Oct	251	270			2,678	2,844	3,214
Nov	158	223			2,751	2,870	3,254
Dec	268	125			2,764	2,929	3,113
Total	2,782	3,013					

1/ Reported by leading breeders. Coverage may not be 100 percent. Includes expected pullet chicks from eggs sold during the preceding month at the rate of 125 pullet chicks per 30 dozen case of eggs.

2/ For May 1995, includes breeder pullet chicks hatched Nov 1993 through Oct 1994.

Broiler-Type Eggs in Incubators: By Region
and United States, June 1, 1994-95

Geographic Division	1994	1995	1995 as % of 1994
	1,000		Percent
North Atlantic	12,481	12,206	98
E North Central	7,280	7,925	109
W North Central	12,496	18,216	146
South Atlantic	215,635	221,779	103
South Central	272,152	279,308	103
West	23,585	22,621	96
US	543,629	562,055	103

**Broiler-Type Chicks Hatched: Number by State
and United States, May 1994-95**

State	May			Jan-May		
	1994	1995	1995 as % of 1994	1994	1995	1995 as % of 1994
	----- 1,000 -----	----- 1,000 -----	Percent	----- 1,000 -----	----- 1,000 -----	Percent
AL	90,748	93,326	103	440,251	459,979	104
AR	107,434	106,272	99	513,099	511,105	100
DE	16,484	16,760	102	76,214	83,199	109
FL	11,894	11,127	94	60,986	49,321	81
GA	94,018	99,616	106	439,000	476,049	108
MD	32,697	32,271	99	159,130	157,419	99
MS	54,036	56,022	104	248,652	269,478	108
NC	61,667	66,342	108	289,876	311,501	107
PA	11,562	11,640	101	57,038	55,556	97
SC	15,899	15,762	99	74,352	76,830	103
TX	37,932	41,494	109	175,784	192,852	110
VA	23,683	24,350	103	109,457	118,301	108
CA TN & WV	34,458	35,509	103	161,898	168,687	104
15 Sts 1/	592,512	610,491	103	2,805,737	2,930,277	104
OR & WA	6,216	6,132	99	29,594	28,281	96
Oth Sts 2/	59,962	73,027	122	267,079	331,149	124
US	658,690	689,650	105	3,102,410	3,289,707	106

1/ States in the weekly hatchery production estimating program.

2/ Not published separately to avoid disclosing data for individual operations.

Broiler Chicks Hatched: By Month, United States, 1993-95

Month	By Months				Cumulative			
	1993	1994	1995	1995 as % of 1994	1993	1994	1995	1995 as % of 1994
	----- 1,000 -----	----- 1,000 -----	----- 1,000 -----	Percent	----- 1,000 -----	----- 1,000 -----	----- 1,000 -----	Percent
Jan	598,798	618,112	661,389	107	598,798	618,112	661,389	107
Feb	547,831	558,590	598,962	107	1,146,629	1,176,702	1,260,351	107
Mar	622,983	639,967	677,334	106	1,769,612	1,816,669	1,937,685	107
Apr	600,861	627,051	662,372	106	2,370,473	2,443,720	2,600,057	106
May	634,371	658,690	689,650	105	3,004,844	3,102,410	3,289,707	106
Jun	619,453	647,163			3,624,297	3,749,573		
Jul	619,009	646,456			4,243,306	4,396,029		
Aug	612,381	653,710			4,855,687	5,049,739		
Sep	582,781	625,867			5,438,468	5,675,606		
Oct	584,260	617,957			6,022,728	6,293,563		
Nov	574,803	597,276			6,597,531	6,890,839		
Dec	623,237	658,914			7,220,768	7,549,753		

Intended Placements: Broiler-Type Pullet Chicks for Hatchery
Supply Flocks by Month and Total, 1993-95 1/

Month	Pullet Chicks Hatched			as % of: 1994	Cumulative Potential Placements Relative to Current Supply Flocks 7-14 Months Earlier 2/		
	1993	1994	1995		1993	1994	1995
	----- 1,000 -----	----- 1,000 -----	----- 1,000 -----		----- 1,000 -----	----- 1,000 -----	----- 1,000 -----
US Place-ments							
Jan	5,664	5,989	5,748	96	40,202	42,665	47,272
Feb	4,549	5,518	5,481	99	40,819	43,906	47,859
Mar	5,678	6,301	6,161	98	40,908	44,486	48,254
Apr	5,531	6,101	6,319	104	41,133	43,943	48,601
May	5,944	6,266	6,135	98	41,866	44,907	49,425
Jun	5,568	5,911			41,358	44,746	48,943
Jul	5,967	6,104			40,871	44,884	49,255
Aug	5,585	6,064			41,704	44,929	48,737
Sep	5,121	6,336			41,083	44,879	48,307
Oct	5,513	6,342			41,330	45,213	48,364
Nov	5,517	5,819			41,780	45,729	48,620
Dec	5,669	6,413			42,504	46,874	48,419
Annual Total	66,306	73,164					
Total Place-ments3/							
Jan	7,098	7,168	7,038	98			
Feb	5,664	6,829	7,176	105			
Mar	6,909	7,544	7,577	100			
Apr	6,420	7,234	7,835	108			
May	7,182	7,394	7,873	106			
Jun	6,723	7,153					
Jul	7,114	7,146					
Aug	6,587	7,290					
Sep	6,177	7,545					
Oct	6,634	7,959					
Nov	6,718	7,251					
Dec	6,949	7,908					
Annual Total	80,175	88,421					

1/ Reported by leading breeders. Coverage may not be 100 percent. Includes expected pullet chicks from eggs sold during the preceding month at the rate of 125 pullet chicks per 30 dozen case of eggs.

2/ For May 1995, includes breeder pullet chicks hatched Mar 1994 through Oct 1994.

3/ U.S. production of intended placements worldwide.

Procedures and Reliability

Data Sources: Primary data for the "Chickens and Eggs" report are from weekly and/or monthly questionnaires sent to producers. An attempt is made to collect information for layer and egg estimates from each known contractor and independent producer who has over 30,000 table egg layers. Coverage for operations with less than 30,000 table egg layers are estimated each month based on data reported in December. Approximately 900 contractors, independent egg producers, and started pullet operations are contacted each month. All known hatcheries, approximately 360, are contacted for information on a weekly and/or monthly basis.

Revisions: The previous month's estimates are subject to revision if late reports or corrected data indicates a different level. Additionally, revisions needed after the monthly report will be made at the end of the marketing year and published in the annual summaries of "Layers and Egg Production" and "Hatchery Production".

Procedures and Reliability: Operations are mailed a questionnaire and given adequate time to respond by mail. Those that do not respond are phoned. Great care is exercised to ensure that all operations are accounted for during each survey period. However, there are usually missing reports that must be accounted for in the estimates.

Sound statistical methodology is employed to derive estimates from the reported data. All data are checked for unusual values. All operations' data are compared to their own past operating profiles and also to trends from other operations. Data for missing operations are estimated based on similar operations or historical data. Survey data are subject to non-sampling errors such as omissions and mistakes in reporting and in processing. While these errors cannot be measured directly, they are minimized by reviewing all data for consistency and reasonableness.

Egg-type chicks hatched are comprised of all chicks of egg-type domesticated breeds including males and chicks destined for hatchery supply flocks and research purposes. The relationship of chicks hatched to chicken inventory and poultry marketings is carefully monitored. The disposition of egg-type chicks hatched prior to placement into the laying flock can vary significantly, which can make comparisons to changes in layer inventory inconsistent over time.

Intended placement data reported by leading breeders include pullet chicks expected from eggs sold the preceding month. The breeders in this report account for a large percentage of replacement pullets for hatchery supply flocks. Production of replacement pullets by these breeders indicates the number of pullets available to hatchery egg supply flocks several months before the pullets will actually move into the flocks.

The next "Chickens and Eggs" report will be released at 3 p.m. ET. on July 25, 1995.

The United States Department of Agriculture (USDA) prohibits discrimination in its programs on the basis of race, color, national origin, sex, religion, age, disability, political beliefs, and marital or familial status. Persons with disabilities who require alternative means for communication of program information (braille, large print, audiotape, etc.) should contact the USDA Office of Communications at (202) 720-5881 (voice) or (202) 720-7808 (TDD).

To file a complaint, write the Secretary of Agriculture, USDA, Washington, D.C., 20250, or call (202) 720-7327 (voice) or (202) 720-1127 (TDD). USDA is an equal employment opportunity employer.

☒ **Want to subscribe?** ☒ **Time to renew?**

Subscribe to **Chickens and Eggs** today! If you already subscribe to this timely periodical, note that expiration information about your subscription appears on the top line of your mailing label. **Expiration information will appear in one of two formats: 1-PEC-2 (this means you have TWO issues remaining in your subscription) or APR95 (expiration date is April 1995).** Disregard this notice if no renewal information appears. Call **1-800-999-6779**, and tell us whether you want to subscribe or renew, or return this form to: **ERS-NASS, 341 Victory Drive, Herndon, VA 22070.**

Chickens and Eggs

- ☐ Yes! I want to **start** my subscription.
☐ Yes! I want to **renew** my subscription.

	1 Year	2 Years	3 Years
Domestic	<input type="checkbox"/> \$36.00	<input type="checkbox"/> \$70.00	<input type="checkbox"/> \$105.00
Foreign	<input type="checkbox"/> \$45.00	<input type="checkbox"/> \$87.50	<input type="checkbox"/> \$131.25

New subscribers:

Name: _____
Address: _____
City, State, Zip: _____
Daytime phone: (____) _____

Renewals:

ATTACH MAILING LABEL HERE

Payment method:

- ☐ Bill me (domestic orders only). Use purchase orders, checks drawn on U.S. banks, cashier's checks, or international money orders. **Make payable to ERS-NASS.**
☐ Enclosed is \$_____.

Credit card orders: ☐ MasterCard ☐ Visa Total charges \$_____

Credit card number:

Card expiration date:
Month/Year

**For fastest service, call our toll-free order desk 1-800-999-6779,
in the U.S. and Canada; other areas please call 703-834-0125,
or FAX this page to 703-834-0110.**