

Chickens and Eggs

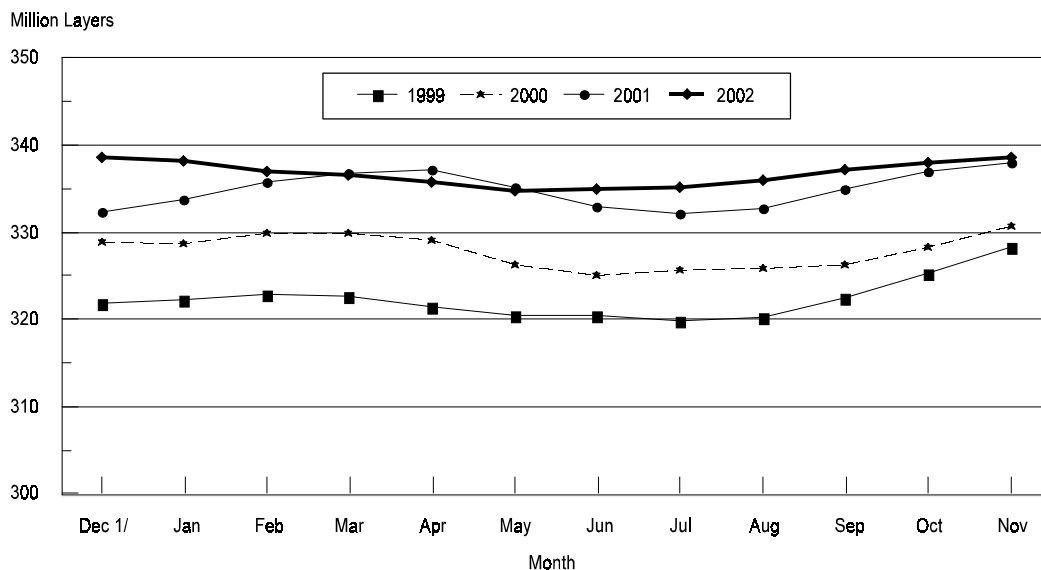
Released December 23, 2002, by the National Agricultural Statistics Service (NASS), Agricultural Statistics Board, U.S. Department of Agriculture. For information on "Chickens and Eggs" call Tom Kruchten at (202) 690-4870, for "Hatch" call Jody Roberts at (202) 690-8632, office hours 7:30 a.m. to 4:00 p.m. ET.

November Egg Production Up 1 Percent

U.S. egg production totaled 7.25 billion during November 2002, up 1 percent from last year. Production included 6.23 billion table eggs and 1.02 billion hatching eggs, of which 962 million were broiler-type and 57.0 million were egg-type. The total number of layers during November 2002 averaged 339 million, up slightly from a year earlier. November egg production per 100 layers was 2,140 eggs, up 1 percent from the 2,128 eggs in November 2001.

November 2002 contained 21 weekdays, two holidays and five Saturdays, compared to 22 weekdays, two holidays and four Saturdays in November 2001.

Average Number of All Layers United States , 1999 - 2002



All layers in the U.S. on December 1, 2002, totaled 339 million, up slightly from a year ago. The 339 million layers consisted of 282 million layers producing table or commercial type eggs, 53.8 million layers producing broiler-type hatching eggs, and 2.57 million layers producing egg-type hatching eggs. Rate of lay per day on December 1, 2002, averaged 71.3 eggs per 100 layers, up slightly from a year ago.

Laying flocks in the 30 major egg producing States produced 6.76 billion eggs during November 2002, up slightly from a year ago. The average number of layers during November, at 316 million, was down slightly from a year ago.

Individual State estimates are available for the 30 major egg producing States. These States are listed on page 8 of this release and account for approximately 94 percent of the total U.S. egg production. Production for the other States are grouped into an "Other States" category and combined with the 30 States published individually to obtain a U.S. estimate. Individual State estimates for "Other States" are available annually in the "**Chickens and Eggs Summary**" report.

Egg-Type Chicks Hatched Down 3 Percent

Egg-type chicks hatched during November totaled 31.1 million, down 3 percent from November 2001. Eggs in incubators totaled 28.4 million on December 1, 2002, down 4 percent from a year ago.

Domestic placements of egg-type pullet chicks for future hatchery supply flocks by leading breeders totaled 223,000 during November 2002, down 15 percent from November 2001.

Broiler Hatch Down 2 Percent

The November 2002 hatch of broiler-type chicks, at 690 million, was down 2 percent from November of the previous year. There were 647 million eggs in incubators on December 1, 2002, up 1 percent from a year earlier.

Leading breeders placed 6.9 million broiler-type pullet chicks for future domestic hatchery supply flocks during November 2002, down 4 percent from November 2001.

**All Layers: Average Number on Hand During the Month,
United States, 1999-02**

Month	1999	2000	2001	2002
	<i>1,000 Layers</i>	<i>1,000 Layers</i>	<i>1,000 Layers</i>	<i>1,000 Layers</i>
Dec ¹	321,972	328,878	332,281	338,524
Jan	322,356	328,657	333,798	338,265
Feb	322,827	329,941	335,813	337,027
Mar	322,782	330,961	336,820	336,606
Apr	321,539	329,185	337,139	335,729
May	320,510	326,288	335,159	334,857
Jun	320,441	325,057	332,920	335,028
Jul	319,819	325,663	332,231	335,269
Aug	320,188	325,853	332,800	336,027
Sep	322,409	326,337	335,020	337,151
Oct	325,287	328,278	337,085	338,036
Nov	328,268	330,830	337,915	338,593

¹ December preceding year.

**Eggs: Production During the Month by Type,
United States, 2001-02**

Month	Total Eggs		Table Eggs		Hatching Eggs	
	2001	2002	2001	2002	2001	2002
	<i>Million Eggs</i>	<i>Million Eggs</i>	<i>Million Eggs</i>	<i>Million Eggs</i>	<i>Million Eggs</i>	<i>Million Eggs</i>
Dec ¹	7,287	7,404	6,206	6,330	1,081	1,074
Jan	7,226	7,245	6,129	6,154	1,097	1,091
Feb	6,524	6,561	5,517	5,574	1,007	987
Mar	7,336	7,395	6,224	6,291	1,112	1,104
Apr	7,099	7,081	6,016	5,992	1,083	1,089
May	7,240	7,274	6,114	6,138	1,126	1,135
Jun	6,992	7,116	5,907	6,027	1,085	1,089
Jul	7,195	7,341	6,097	6,237	1,098	1,104
Aug	7,221	7,353	6,138	6,260	1,083	1,093
Sep	7,044	7,145	5,993	6,099	1,051	1,045
Oct	7,347	7,410	6,264	6,344	1,083	1,066
Nov	7,191	7,246	6,159	6,226	1,032	1,019
During Year	85,702	86,571	72,764	73,672	12,938	12,896

¹ December preceding year.

**Layers and Eggs: Layers on Hand and Eggs Produced by Type,
and Forced Molt, United States, October-November 2001-02**

Item	Unit	2001	2002	2002 as % of 2001
Layers During Oct	1,000			
All Layers		337,085	338,036	100
Table Egg Type		278,583	280,702	101
Hatching Egg Type		58,502	57,334	98
Broiler-Type Hatching		55,844	54,833	98
Egg-Type Hatching		2,658	2,501	94
Eggs per 100 Layers During Oct	Number			
All Layers		2,180	2,192	101
Table Egg Type		2,249	2,260	100
Hatching Egg Type		1,851	1,859	100
Broiler-Type Hatching		1,830	1,838	100
Egg-Type Hatching		2,295	2,319	101
Eggs Produced During Oct	Million			
All Layers		7,347	7,410	101
Table Egg Type		6,264	6,344	101
Hatching Egg Type		1,083	1,066	98
Broiler-Type Hatching		1,022	1,008	99
Egg-Type Hatching		61	58	95
Layers on Nov 1	1,000			
All Layers		337,549	338,262	100
Table Egg Type		279,016	280,918	101
Hatching Egg Type		58,533	57,344	98
Broiler-Type Hatching		55,850	54,794	98
Egg-Type Hatching		2,683	2,550	95
Eggs per 100 Layers on Nov 1	Number			
All Layers		70.6	71.1	101
Table Egg Type		73.0	73.4	101
Hatching Egg Type		59.1	59.8	101
Broiler-Type Hatching		58.4	59.1	101
Egg-Type Hatching		74.4	75.6	102
Forced Molt Layers on Nov 1	Percent			
Percent Being Molted		3.1	3.8	123
Percent with Molt Completed		23.2	23.5	101
Layers Sold for Slaughter During Oct	1,000	14,530	15,215	105
Layers Rendered, Died, Destroyed, Composted or Disappeared For Any Reason During Oct	1,000	4,290	4,220	98
Pullets Less Than 20 Weeks of Age, Nov 1	1,000	94,424	92,352	98
Pullets Added During Oct ¹	1,000	20,190	21,114	105

¹ Pullet chicks one day old added to pullet flocks.

**Layers and Eggs: Layers on Hand and Eggs Produced by Type,
and Forced Molt, United States, November-December 2001-02**

Item	Unit	2001 ¹	2002	2002 as % of 2001
Layers During Nov	1,000			
All Layers		337,915	338,593	100
Table Egg Type		279,423	281,701	101
Hatching Egg Type		58,492	56,892	97
Broiler-Type Hatching		55,841	54,325	97
Egg-Type Hatching		2,651	2,567	97
Eggs per 100 Layers During Nov	Number			
All Layers		2,128	2,140	101
Table Egg Type		2,204	2,210	100
Hatching Egg Type		1,764	1,791	102
Broiler-Type Hatching		1,741	1,771	102
Egg-Type Hatching		2,263	2,220	98
Eggs Produced During Nov	Million			
All Layers		7,191	7,246	101
Table Egg Type		6,159	6,226	101
Hatching Egg Type		1,032	1,019	99
Broiler-Type Hatching		972	962	99
Egg-Type Hatching		60	57	95
Layers on Dec 1	1,000			
All Layers		338,233	338,876	100
Table Egg Type		279,805	282,463	101
Hatching Egg Type		58,428	56,413	97
Broiler-Type Hatching		55,819	53,839	96
Egg-Type Hatching		2,609	2,574	99
Eggs per 100 Layers on Dec 1	Number			
All Layers		71.2	71.3	100
Table Egg Type		73.9	73.7	100
Hatching Egg Type		58.3	59.4	102
Broiler-Type Hatching		57.5	58.6	102
Egg-Type Hatching		74.7	74.3	99
Forced Molt Layers, Dec 1	Percent			
Percent Being Molted		2.7	2.7	100
Percent with Molt Completed		23.9	24.9	104
Layers Sold for Slaughter During Nov	1,000	15,960	14,983	94
Layers Rendered, Died, Destroyed. Composted or Disappeared For Any Reason During Nov	1,000	3,681	4,090	111
Pullets Less Than 20 Weeks of Age, Dec 1	1,000	94,730	92,202	97
Pullets Added During Nov ²	1,000	21,532	20,739	96

¹ Revised.

² Pullet chicks one day old added to pullet flocks.

**Layers and Eggs: Layers on Hand and Eggs Produced by Type, and Forced
Molt, 30 Selected States, October-November, 2001-02 ¹**

Item	Unit	2001	2002	2002 as % of 2001
Layers During Oct	1,000			
All Layers		316,470	316,630	100
Table Egg Type		262,655	263,830	100
Hatching Egg Type		53,815	52,800	98
Broiler-Type Hatching		51,230	50,385	98
Egg-Type Hatching		2,585	2,415	93
Eggs per 100 Layers During Oct	Number			
All Layers		2,181	2,191	100
Table Egg Type		2,249	2,258	100
Hatching Egg Type		1,849	1,856	100
Broiler-Type Hatching		1,825	1,834	100
Egg-Type Hatching		2,321	2,319	100
Eggs Produced During Oct	Million			
All Layers		6,901	6,936	101
Table Egg Type		5,906	5,956	101
Hatching Egg Type		995	980	98
Broiler-Type Hatching		935	924	99
Egg-Type Hatching		60	56	93
Layers on Nov 1	1,000			
All Layers		316,822	316,817	100
Table Egg Type		262,999	263,905	100
Hatching Egg Type		53,823	52,912	98
Broiler-Type Hatching		51,213	50,441	98
Egg-Type Hatching		2,610	2,471	95
Eggs per 100 Layers on Nov 1	Number			
All Layers		70.6	71.1	101
Table Egg Type		73.0	73.4	101
Hatching Egg Type		59.1	59.8	101
Broiler-Type Hatching		58.3	59.0	101
Egg-Type Hatching		74.8	75.4	101
Forced Molt Layers on Nov 1	Percent			
Percent Being Molted		3.0	3.8	127
Percent with Molt Completed		23.1	23.3	101
Layers Sold for Slaughter During Oct	1,000	13,663	13,923	102
Layers Rendered, Died, Destroyed, Composted or Disappeared For Any Reason During Oct	1,000	4,128	3,975	96
Pullets Less Than 20 Weeks of Age, Nov 1	1,000	88,651	86,594	98
Pullets Added During Oct ²	1,000	19,156	19,812	103

¹ The 30 States are listed in the table on page 8.

² Pullet chicks one day old added to pullet flocks.

**Layers and Eggs: Layers on Hand and Eggs Produced by Type, and Forced
Molt, 30 Selected States, November-December, 2001-02 ¹**

Item	Unit	2001 ²	2002	2002 as % of 2001
Layers During Nov	1,000			
All Layers		316,966	316,086	100
Table Egg Type		263,195	263,587	100
Hatching Egg Type		53,771	52,499	98
Broiler-Type Hatching		51,207	50,013	98
Egg-Type Hatching		2,564	2,486	97
Eggs per 100 Layers During Nov	1,000			
All Layers		2,130	2,139	100
Table Egg Type		2,204	2,207	100
Hatching Egg Type		1,765	1,792	102
Broiler-Type Hatching		1,740	1,770	102
Egg-Type Hatching		2,262	2,253	100
Eggs Produced During Nov	Million			
All Layers		6,750	6,760	100
Table Egg Type		5,801	5,818	100
Hatching Egg Type		949	941	99
Broiler-Type Hatching		891	885	99
Egg-Type Hatching		58	56	97
Layers on Dec 1	1,000			
All Layers		317,075	315,319	99
Table Egg Type		263,375	263,253	100
Hatching Egg Type		53,700	52,066	97
Broiler-Type Hatching		51,191	49,572	97
Egg-Type Hatching		2,509	2,494	99
Eggs per 100 Layers on Dec 1	Number			
All Layers		71.2	71.2	100
Table Egg Type		73.9	73.6	100
Hatching Egg Type		58.2	59.4	102
Broiler-Type Hatching		57.4	58.6	102
Egg-Type Hatching		75.2	76.0	101
Forced Molt Layers, Dec 1	Percent			
Percent Being Molted		2.7	2.8	104
Percent with Molt Completed		23.8	25.1	105
Layers Sold for Slaughter During Nov	1,000	15,037	14,255	95
Layers Rendered, Died, Destroyed, Composted or Disappeared For Any Reason During Nov	1,000	3,460	3,875	112
Pullets Less Than 20 Weeks of Age, Dec 1	1,000	89,126	86,427	97
Pullets Added During Nov ³	1,000	20,473	19,928	97

¹ The 30 States are listed in the table on page 8.

² Revised.

³ Pullet chicks one day old added to pullet flocks.

**Layers and Eggs: Layers on Hand and Eggs Produced by State
and United States, During October 2001-02**

State	Table Egg Layers in Flocks 30,000 and Above		All Layers ¹		Eggs per 100 for All Layers ¹	
	2001	2002	2001	2002	2001	2002
	<i>1,000</i>	<i>1,000</i>	<i>1,000</i>	<i>1,000</i>	<i>Number</i>	<i>Number</i>
AL	2,761	2,305	10,330	9,816	1,926	1,925
AR	4,759	4,699	14,613	14,667	1,930	1,868
CA	23,078	23,021	23,656	23,605	2,198	2,216
CO	3,111	3,343	3,625	3,829	2,152	2,350
CT	2,998	3,016	3,044	3,072	2,293	2,279
FL	10,033	10,172	10,782	10,826	2,161	2,189
GA	12,005	10,979	21,661	20,330	2,064	2,105
HI	531	488	560	537	1,732	1,825
IL	3,290	3,153	3,525	3,391	2,383	2,300
IN	22,279	22,874	22,969	23,597	2,255	2,297
IA	33,312	37,063	34,136	37,876	2,276	2,292
ME	3,992	4,276	4,057	4,328	2,384	2,033
MD	2,868	3,003	3,152	3,201	2,379	2,437
MI	6,316	6,338	6,567	6,589	2,178	2,277
MN	11,560	10,747	12,243	11,467	2,197	2,259
MS	1,720	1,814	6,470	6,714	1,978	1,996
MO	5,575	5,550	6,983	6,939	2,148	2,291
NE	11,526	11,556	11,626	11,656	2,193	2,248
NY	3,833	3,791	4,174	4,024	2,276	2,361
NC	3,300	3,368	11,170	10,725	1,952	1,977
OH	29,786	29,924	30,375	30,397	2,245	2,145
OK	1,848	1,862	3,865	3,931	1,940	1,908
OR	2,799	2,689	2,980	2,857	2,349	2,310
PA	22,735	22,444	24,137	23,727	2,337	2,348
SC	4,661	4,272	5,667	5,308	2,329	2,261
SD	2,177	2,138	2,377	2,338	2,103	1,967
TX	14,512	14,252	18,811	18,651	2,110	2,214
VA	1,465	1,297	3,237	2,902	1,854	2,068
WA	4,995	5,059	5,066	5,129	2,270	2,125
WI	4,020	3,608	4,612	4,201	2,342	2,190
30 Sts	257,845	259,101	316,470	316,630	2,181	2,191
Oth Sts ²	14,736	15,700	20,615	21,406	2,163	2,214
US	272,581	274,801	337,085	338,036	2,180	2,192

¹ Includes all layers and eggs produced in both table egg and hatching egg flocks regardless of size.

² Estimates for individual States are not available.

**Layers and Eggs: Layers on Hand and Eggs Produced by State
and United States, During November 2001-02**

State	Table Egg Layers in Flocks 30,000 and Above		All Layers ¹		Eggs per 100 for All Layers ¹	
	2001	2002	2001	2002	2001	2002
	<i>1,000</i>	<i>1,000</i>	<i>1,000</i>	<i>1,000</i>	<i>Number</i>	<i>Number</i>
AL	2,729	2,316	10,279	9,692	1,848	1,826
AR	4,955	4,758	14,811	14,645	1,843	1,857
CA	23,136	22,446	23,745	23,035	2,169	2,192
CO	3,036	3,458	3,550	3,955	2,113	2,276
CT	3,027	3,010	3,073	3,062	2,304	2,253
FL	10,099	10,186	10,841	10,817	2,186	2,173
GA	12,287	10,825	21,830	20,122	2,080	2,092
HI	515	489	563	534	1,741	1,835
IL	3,438	3,211	3,670	3,450	2,262	2,377
IN	22,002	22,657	22,695	23,367	2,172	2,191
IA	33,724	37,203	34,543	37,986	2,194	2,222
ME	3,962	4,169	4,023	4,220	2,182	1,777
MD	2,920	3,086	3,236	3,285	2,410	2,405
MI	6,408	6,447	6,659	6,698	2,223	2,239
MN	11,590	10,770	12,270	11,472	2,029	2,162
MS	1,823	1,848	6,630	6,726	1,931	1,933
MO	5,426	5,330	6,858	6,746	2,187	2,268
NE	11,447	11,454	11,547	11,554	2,070	2,138
NY	3,675	3,606	3,966	3,826	2,269	2,378
NC	3,290	3,495	11,174	10,768	1,870	1,922
OH	29,536	29,951	30,123	30,445	2,184	2,105
OK	1,812	1,943	3,826	4,058	1,882	1,848
OR	2,746	2,637	2,917	2,802	2,297	2,355
PA	22,555	22,646	23,950	23,989	2,267	2,276
SC	4,827	4,281	5,809	5,255	2,290	2,150
SD	2,168	2,144	2,368	2,344	2,111	1,877
TX	14,633	14,391	18,915	18,682	2,115	2,163
VA	1,492	1,276	3,273	3,035	1,894	2,043
WA	5,028	5,084	5,101	5,157	2,215	2,191
WI	4,134	3,760	4,721	4,359	2,415	2,271
30 Sts	258,420	258,877	316,966	316,086	2,130	2,139
Oth Sts ²	15,046	16,942	20,949	22,507	2,105	2,159
US	273,466	275,819	337,915	338,593	2,128	2,140

¹ Includes all layers and eggs produced in both table egg and hatching egg flocks regardless of size.

² Estimates for individual States are not available.

**Egg Production: By Type, State, and United States,
October 2001-02**

State	Total Production		Table Eggs ¹		Hatching Eggs ¹	
	2001	2002	2001	2002	2001	2002
	<i>Million Eggs</i>	<i>Million Eggs</i>	<i>Million Eggs</i>	<i>Million Eggs</i>	<i>Million Eggs</i>	<i>Million Eggs</i>
AL	199	189	62	52	137	137
AR	282	274	106	103	176	171
CA	520	523				
CO	78	90				
CT	70	70				
FL	233	237	220	226	13	11
GA	447	428	268	249	179	179
HI	9.7	9.8	9.7	9.8	0	0
IL	84	78	81	74	3	4
IN	518	542	506	529	12	13
IA	777	868				
ME	97	88				
MD	75	78	69	75	6	3
MI	143	150				
MN	269	259	261	250	8	9
MS	128	134	41	42	87	92
MO	150	159				
NE	255	262	255	262	0	0
NY	95	95				
NC	218	212	80	81	138	131
OH	682	652				
OK	75	75	44	43	31	32
OR	70	66	68	65	2	1
PA	564	557	547	543	17	14
SC	132	120	112	101	20	19
SD	50	46	50	46	0	0
TX	397	413				
VA	60	60	32	31	28	29
WA	115	109				
WI	108	92				
30 Sts	6,901	6,936	5,906	5,956	995	980
Oth Sts ²	446	474	358	388	88	86
US	7,347	7,410	6,264	6,344	1,083	1,066

¹ Data by type of flock not shown for some States to avoid disclosing individual operations.

² Estimates for individual States are not available.

**Egg Production: By Type, State, and United States,
November 2001-02**

State	Total Production		Table Eggs ¹		Hatching Eggs ¹	
	2001	2002	2001	2002	2001	2002
	<i>Million Eggs</i>	<i>Million Eggs</i>	<i>Million Eggs</i>	<i>Million Eggs</i>	<i>Million Eggs</i>	<i>Million Eggs</i>
AL	190	177	60	52	130	125
AR	273	272	111	105	162	167
CA	515	505				
CO	75	90				
CT	71	69				
FL	237	235	225	224	12	11
GA	454	421	279	248	175	173
HI	9.8	9.8	9.8	9.8	0	0
IL	83	82	80	79	3	3
IN	493	512	481	499	12	13
IA	758	844				
ME	88	75				
MD	78	79	72	76	6	3
MI	148	150				
MN	249	248	241	239	8	9
MS	128	130	43	43	85	87
MO	150	153				
NE	239	247	239	247	0	0
NY	90	91				
NC	209	207	78	81	131	126
OH	658	641				
OK	72	75	42	44	30	31
OR	67	66	66	65	1	1
PA	543	546	527	531	16	15
SC	133	113	115	96	18	17
SD	50	44	50	44	0	0
TX	400	404				
VA	62	62	34	31	28	31
WA	113	113				
WI	114	99				
30 Sts	6,750	6,760	5,801	5,818	949	941
Oth Sts ²	441	486	358	408	83	78
US	7,191	7,246	6,159	6,226	1,032	1,019

¹ Data by type of flock not shown for some States to avoid disclosing individual operations.

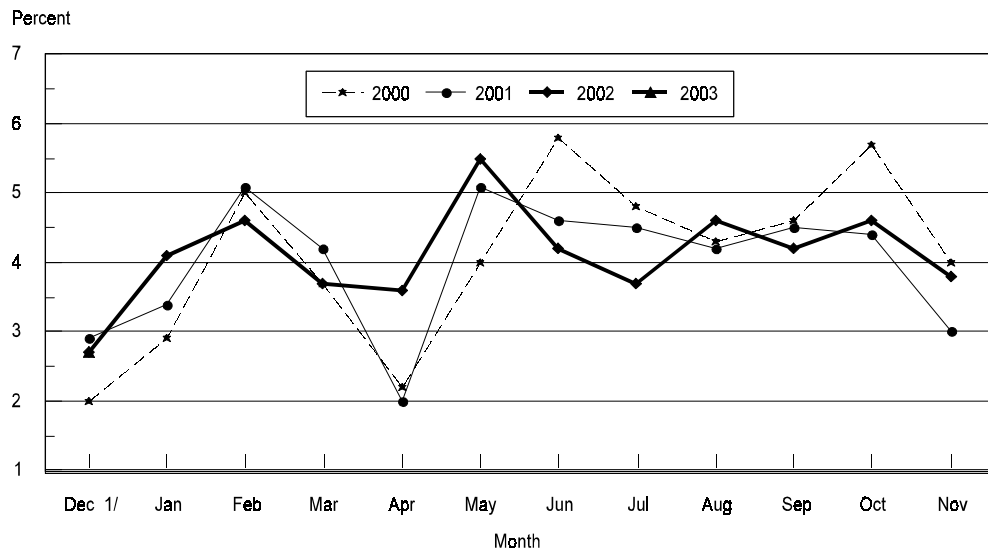
² Estimates for individual States are not available.

**Forced Molt: Percent of All Layers by Month,
United States, 2001-02 ¹**

Month	Percent Being Molted		Percent with Molt Completed	
	2001	2002	2001	2002
	<i>Percent</i>	<i>Percent</i>	<i>Percent</i>	<i>Percent</i>
Jan	3.4	4.1	24.1	22.6
Feb	5.1	4.6	22.3	22.0
Mar	4.2	3.7	23.1	22.1
Apr	2.0	3.6	23.1	22.1
May	5.1	5.7	20.9	21.5
Jun	4.6	4.2	23.3	22.2
Jul	4.5	3.7	23.4	22.8
Aug	4.2	4.6	23.1	21.9
Sep	4.5	4.2	22.7	23.5
Oct	4.4	4.6	22.8	23.7
Nov	3.1	3.8	23.2	23.5
Dec	2.7	2.7	23.9	24.9

¹ As of first of month.

All Layers : United States
Percent Being Molted, 2000 - 2003
 First of Month



1/ Previous Year

**Forced Molt: Percent of All Layers by State
and United States, December 2001-02 ¹**

State	Percent Being Molted		Percent with Molt Completed	
	2001	2002	2001	2002
	<i>Percent</i>	<i>Percent</i>	<i>Percent</i>	<i>Percent</i>
AL	0.0	0.0	11.5	13.5
AR	0.0	0.0	11.0	11.5
CA	2.5	4.0	36.5	54.5
CO	5.0	12.0	23.5	26.0
CT	0.0	0.0	0.5	0.5
FL	0.0	3.0	35.0	33.0
GA	0.0	1.5	16.0	17.0
HI	6.0	7.0	44.0	47.5
IL	0.0	0.0	25.5	18.0
IN	2.0	2.5	32.5	31.0
IA	4.5	3.5	30.0	32.0
ME	0.0	0.0	0.0	2.0
MD	0.0	0.0	40.0	51.0
MI	0.5	0.5	48.5	26.5
MN	4.5	5.5	30.5	28.5
MS	0.0	0.0	12.0	13.0
MO	5.5	2.0	18.0	21.0
NE	7.0	7.0	27.5	23.0
NY	0.0	0.0	7.5	10.5
NC	0.0	1.0	8.0	12.5
OH	2.5	6.0	22.0	21.5
OK	1.0	0.0	7.0	14.0
OR	6.0	4.5	31.0	27.5
PA	4.0	3.0	20.0	17.5
SC	0.0	5.0	23.5	30.5
SD	6.5	7.5	29.5	32.0
TX	7.5	0.0	17.0	15.5
VA	0.5	0.0	19.0	20.0
WA	7.5	3.0	42.0	48.5
WI	0.0	0.0	32.5	39.5
30 Sts	2.7	2.8	23.8	25.1
Oth Sts ²	2.4	0.9	25.4	21.1
US	2.7	2.7	23.9	24.9

¹ As of first of month.

² Estimates for individual States are not available.

**Hatchery Production: Eggs in Incubators, Chicks Hatched,
and Placements by Type, United States, November-December 2001-02**

Item	2001	2002	2002 as % of 2001
	<i>1,000</i>	<i>1,000</i>	<i>Percent</i>
Egg-Type			
Eggs in Incubators on Dec 1	29,499	28,422	96
Chicks Hatched During Nov	32,081	31,078	97
Chicks Hatched Jan thru Nov	420,156	388,632	92
Pullets Hatched During Nov for Intended Placements in Hatchery Supply Flocks	261	223	85
7-18 Month Earlier ¹	3,160	3,010	95
Broiler-Type			
Eggs in Incubators on Dec 1	640,603	646,990	101
Chicks Hatched During Nov	702,607	690,024	98
Chicks Hatched Jan thru Nov	8,236,825	8,320,979	101
Pullets Hatched During Nov for Intended Placements in Hatchery Supply Flocks	7,261	6,938	96
7-15 Months Earlier ²	60,568	62,207	103

¹ 2002 includes pullet chicks hatched May 2001 through Apr 2002.

² 2002 includes pullet chicks hatched Aug 2001 through Apr 2002.

**Egg-Type Eggs in Incubators: By Region and United States,
December 1, 2001-02**

Geographic Division	2001	2002	2002 as % of 2001
	<i>1,000</i>	<i>1,000</i>	<i>Percent</i>
North Atlantic	5,287	4,511	85
E North Central	6,003	5,489	91
W North Central	5,975	6,133	103
South Atlantic	3,680	3,337	91
South Central	3,946	5,045	128
West	4,608	3,907	85
US	29,499	28,422	96

Regional Listing:

North Atlantic = CT, ME, MA, NH, NJ, NY, PA, RI, VT.

E North Central = IL, IN, MI, OH, WI.

W North Central = IA, KS, MN, MO, NE, ND, SD.

South Atlantic = DE, FL, GA, MD, NC, SC, VA, WV.

South Central = AL, AR, KY, LA, MS, OK, TN, TX.

West = AK, AZ, CA, CO, HI, ID, MT, NM, NV, OR, UT, WA, WY.

**Egg-Type Chicks Hatched: By State and United States,
November 2001-02**

State	November			Jan-Nov		
	2001	2002	2002 as % of 2001	2001	2002	2002 as % of 2001
	<i>1,000</i>	<i>1,000</i>	<i>Percent</i>	<i>1,000</i>	<i>1,000</i>	<i>Percent</i>
AR	605	967	160	8,937	8,955	100
FL	681	647	95	9,816	6,288	64
GA	1,997	1,855	93	23,225	23,605	102
IN	4,394	4,277	97	65,263	52,998	81
IA	4,769	4,630	97	60,049	57,959	97
MN	1,758	1,616	92	17,905	16,347	91
PA	4,121	3,544	86	58,869	46,957	80
Oth Sts ¹	13,756	13,542	98	176,092	175,523	100
US	32,081	31,078	97	420,156	388,632	92

¹ Not published separately to avoid disclosing data for individual operations.

Egg-Type Chicks Hatched: By Month, United States, 2000-02

Month	By Months				Cumulative			
	2000	2001	2002	2002 as % of 2001	2000	2001	2002	2002 as % of 2001
	<i>1,000</i>	<i>1,000</i>	<i>1,000</i>	<i>Percent</i>	<i>1,000</i>	<i>1,000</i>	<i>1,000</i>	<i>Percent</i>
Jan	34,181	36,706	35,533	97	34,181	36,706	35,533	97
Feb	34,659	37,816	34,326	91	68,840	74,522	69,859	94
Mar	38,877	40,993	36,717	90	107,717	115,515	106,576	92
Apr	36,653	42,768	38,212	89	144,370	158,283	144,788	91
May	41,185	42,636	38,944	91	185,555	200,919	183,732	91
Jun	37,268	40,806	35,292	86	222,823	241,725	219,024	91
Jul	33,240	38,640	35,218	91	256,063	280,365	254,242	91
Aug	34,328	34,978	35,877	103	290,391	315,343	290,119	92
Sep	36,325	36,916	35,391	96	326,716	352,259	325,510	92
Oct	36,080	35,816	32,044	89	362,796	388,075	357,554	92
Nov	32,438	32,081	31,078	97	395,234	420,156	388,632	92
Dec	35,178	31,657			430,412	451,813		

**Intended Placements: Egg-Type Pullet Chicks for Hatchery Supply
Flocks by Month and Total, United States, 2000-02 ¹**

Month	Pullet Chicks Hatched			2002 as % of 2001	Cumulative Potential Placements Relative to Current Supply Flocks 7-18 Months Earlier ²		
	2000	2001	2002		2001	2002	2003
	<i>1,000</i>	<i>1,000</i>	<i>1,000</i>	<i>Percent</i>	<i>1,000</i>	<i>1,000</i>	<i>1,000</i>
Jan	212	236	228	97	3,129	3,158	2,974
Feb	251	214	247	115	3,191	3,205	2,916
Mar	286	284	237	83	3,090	3,239	2,886
Apr	309	311	295	95	3,096	3,225	2,926
May	343	315	319	101	3,057	3,134	2,962
Jun	235	261	221	85	3,103	3,087	2,924
Jul	293	340	282	83	3,173	3,048	
Aug	217	251	221	88	3,197	3,040	
Sep	233	219	259	118	3,160	3,073	
Oct	241	150	186	124	3,158	3,026	
Nov	308	261	223	85	3,160	3,010	
Dec	245	206			3,132	3,014	
Total	3,173	3,048					

¹ Reported by leading breeders. Coverage may not be 100 percent. Includes expected pullet chicks from eggs sold during the preceding month at the rate of 125 pullet chicks per 30 dozen case of eggs.

² For November 2002, includes breeder pullet chicks hatched May 2001 through Apr 2002. The 7-18 months represent the first laying cycle. Molting and additional laying cycles will increase the cumulative potential placements.

**Broiler-Type Eggs in Incubators: By Region
and United States, December 1, 2001-02**

Geographic Division	2001	2002	2002 as % of 2001
	<i>1,000</i>	<i>1,000</i>	<i>Percent</i>
North Atlantic	12,260	11,903	97
E North Central	7,383	7,345	99
W North Central	21,095	19,939	95
South Atlantic	238,721	239,275	100
South Central	338,400	343,969	102
West	22,744	24,559	108
US	640,603	646,990	101

**Broiler-Type Chicks Hatched: By State
and United States, November 2001-02**

State	November			Jan-Nov		
	2001	2002	2002 as % of 2001	2001	2002	2002 as % of 2001
	<i>1,000</i>	<i>1,000</i>	<i>Percent</i>	<i>1,000</i>	<i>1,000</i>	<i>Percent</i>
AL	95,685	93,835	98	1,129,310	1,143,525	101
AR	100,879	96,547	96	1,172,255	1,178,751	101
DE	12,223	11,849	97	141,868	137,302	97
FL	8,126	7,999	98	94,980	91,069	96
GA	103,317	100,553	97	1,218,245	1,226,971	101
KY	20,746	20,732	100	244,286	256,069	105
MD	32,966	32,905	100	371,566	378,523	102
MS	60,837	61,013	100	729,337	744,094	102
NC	62,592	60,877	97	718,075	729,445	102
OK	20,617	20,512	99	240,978	249,527	104
PA	11,865	11,345	96	141,633	141,138	100
SC	15,794	15,550	98	183,921	180,987	98
TX	48,497	50,197	104	578,673	597,651	103
VA	21,204	20,816	98	259,906	251,458	97
CA, LA, MO, TN, & WV	68,908	64,869	94	781,946	780,651	100
19 Sts ¹	684,256	669,599	98	8,006,979	8,087,161	101
Oth Sts ²	18,351	20,425	111	229,846	233,818	102
US	702,607	690,024	98	8,236,825	8,320,979	101

¹ States in the weekly hatchery production estimating program.

² Not published separately to avoid disclosing data for individual operations.

Broiler-Type Chicks Hatched: By Month, United States, 2000-02

Month	By Months				Cumulative			
	2000	2001	2002	2002 as % of 2001	2000	2001	2002	2002 as % of 2001
	<i>1,000</i>	<i>1,000</i>	<i>1,000</i>	<i>Percent</i>	<i>1,000</i>	<i>1,000</i>	<i>1,000</i>	<i>Percent</i>
Jan	753,931	745,093	775,669	104	753,931	745,093	775,669	104
Feb	706,216	680,823	702,576	103	1,460,147	1,425,916	1,478,245	104
Mar	761,764	773,760	790,342	102	2,221,911	2,199,676	2,268,587	103
Apr	749,106	755,455	764,982	101	2,971,017	2,955,131	3,033,569	103
May	777,624	785,704	798,315	102	3,748,641	3,740,835	3,831,884	102
Jun	750,528	766,534	776,397	101	4,499,169	4,507,369	4,608,281	102
Jul	742,823	769,449	781,421	102	5,241,992	5,276,818	5,389,702	102
Aug	743,979	771,550	779,803	101	5,985,971	6,048,368	6,169,505	102
Sep	704,944	738,355	741,140	100	6,690,915	6,786,723	6,910,645	102
Oct	721,249	747,495	720,310	96	7,412,164	7,534,218	7,630,955	101
Nov	684,995	702,607	690,024	98	8,097,159	8,236,825	8,320,979	101
Dec	749,026	769,731			8,846,185	9,006,556		

**Intended Placements: Broiler-Type Pullet Chicks for Hatchery
Supply Flocks by Month and Total, 2000-02 ¹**

Month	Pullet Chicks Hatched			2002 as % of 2001	Cumulative Potential Placements Relative to Current Supply Flocks 7-15 Months Earlier ²		
	2000	2001	2002		2001	2002	2003
	<i>1,000</i>	<i>1,000</i>	<i>1,000</i>	<i>Percent</i>	<i>1,000</i>	<i>1,000</i>	<i>1,000</i>
US Place- ments							
Jan	6,861	6,685	6,660	100	63,304	60,750	62,869
Feb	7,001	6,748	7,275	108	62,493	60,382	62,767
Mar	7,310	6,752	6,775	100	62,797	60,771	62,955
Apr	6,764	6,398	6,814	107	62,267	60,989	63,069
May	7,435	7,117	7,597	107	62,100	61,008	62,674
Jun	6,829	6,822	7,206	106	62,204	61,521	62,337
Jul	6,310	6,326	6,602	104	61,323	61,346	
Aug	7,288	7,494	7,449	99	61,244	61,608	
Sep	6,469	6,647	6,691	101	60,557	61,766	
Oct	6,694	6,704	6,265	93	60,480	61,719	
Nov	7,105	7,261	6,938	96	60,568	62,207	
Dec	6,429	6,577			60,397	62,310	
Annual Total	82,495	81,531					
Total Place- ments ³							
Jan	8,069	7,615	8,084	106			
Feb	8,302	8,275	8,491	103			
Mar	8,798	8,325	7,997	96			
Apr	8,522	7,915	8,119	103			
May	8,917	8,647	8,982	104			
Jun	8,201	8,220	8,802	107			
Jul	7,621	7,687	8,083	105			
Aug	8,657	9,133	8,913	98			
Sep	8,042	8,047	8,058	100			
Oct	8,260	7,848	7,438	95			
Nov	8,702	9,017	8,202	91			
Dec	7,614	8,119					
Annual Total	99,705	98,848					

¹ Reported by leading breeders. Coverage may not be 100 percent. Includes expected pullet chicks from eggs sold during the preceding month at the rate of 125 pullet chicks per 30 dozen case of eggs.

² For Nov 2002, includes breeder pullet chicks hatched Aug 2001 through Apr 2002.

³ U.S. production of intended placements worldwide.

Procedures and Reliability

Data Sources: Primary data for the "**Chickens and Eggs**" report are from weekly and/or monthly questionnaires sent to producers. An attempt is made to collect information for layer and egg estimates from each known contractor and independent producer who has over 30,000 table egg layers. Coverage for operations with less than 30,000 table egg layers are estimated each month based on data reported in December. Approximately 900 contractors, independent egg producers, and started pullet operations are contacted each month. All known hatcheries, approximately 330, are contacted for information on a weekly and/or monthly basis.

Revisions: The previous month's estimates are subject to revision if late reports or corrected data indicates a different level. Additionally, revisions needed after the monthly report will be made at the end of the marketing year and published in the annual summaries of "**Chickens and Eggs Summary**" and "**Hatchery Production**".

Procedures and Reliability: Operations are mailed a questionnaire and given adequate time to respond by mail. Those that do not respond are phoned. Great care is exercised to ensure that all operations are accounted for during each survey period. However, there are usually missing reports that must be accounted for in the estimates.

Sound statistical methodology is employed to derive estimates from the reported data. All data are checked for unusual values. All operations' data are compared to their own past operating profiles and also to trends from other operations. Data for missing operations are estimated based on similar operations or historical data. Survey data are subject to non-sampling errors such as omissions and mistakes in reporting and in processing. While these errors cannot be measured directly, they are minimized by reviewing all data for consistency and reasonableness.

Egg-type chicks hatched are comprised of all chicks of egg-type domesticated breeds including males and chicks destined for hatchery supply flocks and research purposes. The relationship of chicks hatched to chicken inventory and poultry marketings is carefully monitored. The disposition of egg-type chicks hatched prior to placement into the laying flock can vary significantly, which can make comparisons to changes in layer inventory inconsistent over time.

Intended placement data reported by leading breeders include pullet chicks expected from eggs sold the preceding month. The breeders in this report account for a large percentage of replacement pullets for hatchery supply flocks. Production of replacement pullets by these breeders indicates the number of pullets available to hatchery supply flocks several months before the pullets will actually move into the flocks. "Hatchery Supply Flocks" include all generations of layers which could lay eggs to supply a hatchery. This includes the generations of parents, grandparents, great-grandparents, pedigree, etc. Also included are research flocks, vaccine flocks, and specific pathogen-free flocks. The broiler cumulative potential placements are a moving total of the intended placements 7-15 months earlier. The egg-type cumulative potential placements of 7-18 months represent the first laying cycle. Molting and additional laying cycles will increase the cumulative potential placements of egg-type hatching flocks.

The next "Chickens and Eggs" report will be released at 3 p.m. ET on January 31, 2003.

The United States Department of Agriculture (USDA) prohibits discrimination in all its programs on the basis of race, color, national origin, gender, religion, age, disability, political beliefs, sexual orientation, and marital or family status. (Not all prohibited bases apply to all programs.) Persons with disabilities who require alternative means for communication of program information (braille, large print, audiotape, etc.) should contact the USDA's TARGET Center at 202-720-2600 (voice and TDD).

To file a complaint of discrimination, write USDA, Director, Office of Civil Rights, Room 326-W, Whitten Building, 1400 Independence Avenue, SW, Washington, D.C., 20250-9410, or call 202-720-5964 (voice or TDD). USDA is an equal opportunity provider and employer.

ACCESS TO REPORTS!!

For your convenience, there are several ways to obtain NASS reports, data products, and services:

INTERNET ACCESS

All NASS reports are available free of charge on the worldwide Internet. For access, connect to the Internet and go to the NASS Home Page at: **<http://www.usda.gov/nass/>**. Select "Today's Reports" or Publications and then Reports Calendar or Publications and then Search, by Title or Subject.

E-MAIL SUBSCRIPTION

All NASS reports are available by subscription free of charge direct to your e-mail address. Starting with the NASS Home Page at **<http://www.usda.gov/nass/>**, click on **Publications**, then click on the **Subscribe by E-mail** button which takes you to the page describing e-mail delivery of reports. Finally, click on **Go to the Subscription Page** and follow the instructions.

AUTOFAX ACCESS

NASSFax service is available for some reports from your fax machine. Please call 202-720-2000, using the handset attached to your fax. Respond to the voice prompts. Document 0411 is a list of available reports.

PRINTED REPORTS OR DATA PRODUCTS

CALL OUR TOLL-FREE ORDER DESK: 800-999-6779 (U.S. and Canada)

Other areas, please call 703-605-6220

FAX: 703-605-6900

(Visa, MasterCard, check, or money order acceptable for payment.)

ASSISTANCE

For **assistance** with general agricultural statistics or further information about NASS or its products or services, contact the **Agricultural Statistics Hotline** at **800-727-9540**, 7:30 a.m. to 4:00 p.m. ET, or e-mail: **nass@nass.usda.gov**.
