

Released September 30, 2011, by the National Agricultural Statistics Service (NASS), Agricultural Statistics Board, United States Department of Agriculture (USDA).

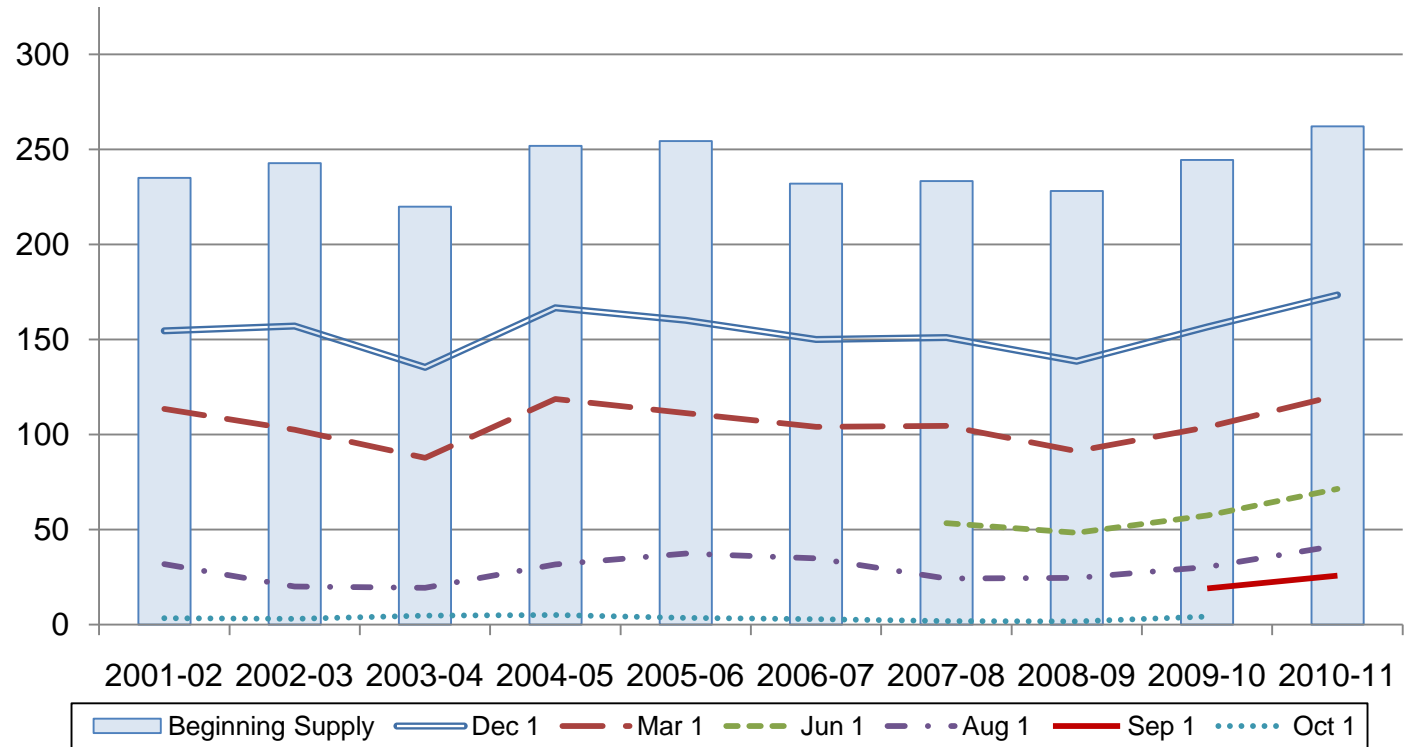
Rough Rice Stocks Down 38 Percent from August

Rough rice stocks in all positions on September 1, 2011 totaled 25.9 million hundredweight (cwt), down 38 percent from the total on August 1, 2011. Stocks held on farms totaled 2.24 million cwt and off-farm stocks totaled 23.6 million cwt. Long grain varieties accounted for 76 percent of the total rough rice, medium grain accounted for 21 percent, and short grain varieties accounted for 3 percent.

Milled rice stocks in all positions totaled 3.99 million cwt, down 14 percent from last month. Milled rice stocks were comprised of 2.29 million cwt of whole kernel rice and 1.70 million cwt of second heads, screenings, and brewers rice.

Rough Rice Stocks – United States

Million cwt



Rice Stocks by Position and Month – United States: 2010 and 2011 (Domestic Units)

[Blank data cells indicate estimation period has not yet begun]

Date	2010			2011		
	On farms	Off farms ¹	Total all positions	On farms	Off farms ¹	Total all positions
	(1,000 cwt)	(1,000 cwt)	(1,000 cwt)	(1,000 cwt)	(1,000 cwt)	(1,000 cwt)
Rough rice						
March 1	23,465	80,516	103,981	33,895	86,720	120,615
June 1	6,310	51,098	57,408	13,227	58,146	71,373
August 1	1,200	29,176	30,376	3,772	37,917	41,689
September 1	788	18,316	19,104	2,242	23,613	25,855
October 1 ²	25	4,226	4,251			
December 1	63,617	109,869	173,486			
Milled rice						
March 1	(X)	4,895	4,895	(X)	6,275	6,275
June 1	(X)	4,520	4,520	(X)	5,968	5,968
August 1	(X)	4,380	4,380	(X)	4,667	4,667
September 1	(X)	4,026	4,026	(X)	3,993	3,993
October 1 ²	(X)	1,149	1,149			
December 1	(X)	6,302	6,302			

(X) Not applicable.

¹ Includes stocks at mills, elevators, warehouses, ports, and in transit.

² California only.

Rice Stocks by Position and Month – United States: 2010 and 2011 (Metric Units)

[Data may not add to totals due to rounding. Blank data cells indicate estimation period has not yet begun]

Date	2010			2011		
	On farms	Off farms ¹	Total all positions	On farms	Off farms ¹	Total all positions
	(metric tons)	(metric tons)	(metric tons)	(metric tons)	(metric tons)	(metric tons)
Rough rice						
March 1	1,064,350	3,652,140	4,716,500	1,537,450	3,933,550	5,471,000
June 1	286,220	2,317,770	2,603,980	599,970	2,637,460	3,237,430
August 1	54,430	1,323,400	1,377,830	171,100	1,719,890	1,890,980
September 1	35,740	830,800	866,540	101,700	1,071,070	1,172,760
October 1 ²	1,130	191,690	192,820			
December 1	2,885,620	4,983,570	7,869,190			
Milled rice						
March 1	(X)	222,030	222,030	(X)	284,630	284,630
June 1	(X)	205,020	205,020	(X)	270,700	270,700
August 1	(X)	198,670	198,670	(X)	211,690	211,690
September 1	(X)	182,620	182,620	(X)	181,120	181,120
October 1 ²	(X)	52,120	52,120			
December 1	(X)	285,850	285,850			

(X) Not applicable.

¹ Includes stocks at mills, elevators, warehouses, ports, and in transit.

² California only.

Rice Stocks by Position – States and United States: September 1, 2010 and 2011

State	2010			2011		
	On farms	Off farms ¹	Total all positions	On farms	Off farms ¹	Total all positions
	(1,000 cwt)	(1,000 cwt)	(1,000 cwt)	(1,000 cwt)	(1,000 cwt)	(1,000 cwt)
Rough rice						
Arkansas	410	9,090	9,500	850	15,832	16,682
California	78	6,047	6,125	67	4,255	4,322
Louisiana	(D)	(D)	788	(D)	(D)	891
Mississippi	(D)	(D)	75	490	655	1,145
Missouri	(D)	(D)	521	(D)	(D)	1,489
Texas	(D)	(D)	2,095	(D)	(D)	1,326
Unallocated ²	300	3,179	-	835	2,871	-
United States	788	18,316	19,104	2,242	23,613	25,855
Milled rice						
Arkansas	(X)	1,981	1,981	(X)	1,694	1,694
California	(X)	923	923	(X)	1,463	1,463
Louisiana	(X)	(D)	(D)	(X)	166	166
Mississippi	(X)	(D)	(D)	(X)	(D)	(D)
Missouri	(X)	(D)	(D)	(X)	(D)	(D)
Texas	(X)	748	748	(X)	239	239
Unallocated ²	(X)	374	374	(X)	431	431
United States	(X)	4,026	4,026	(X)	3,993	3,993

- Represents zero.

(D) Withheld to avoid disclosing data for individual operations.

(X) Not applicable.

¹ Includes stocks at mills, elevators, warehouses, ports, and in transit.

² Unallocated includes State data withheld to avoid disclosure of individual operations.

**Rough Rice Stocks by Length of Grain in All Positions – States and United States:
September 1, 2010 and 2011**

State	Long		Medium		Short		Total	
	2010	2011	2010	2011	2010	2011	2010	2011
	(1,000 cwt)	(1,000 cwt)	(1,000 cwt)	(1,000 cwt)	(1,000 cwt)	(1,000 cwt)	(1,000 cwt)	(1,000 cwt)
California	163	(D)	4,772	3,573	1,190	(D)	6,125	4,322
Other States ¹	11,193	(D)	1,781	1,892	5	(D)	12,979	21,533
United States	11,356	19,739	6,553	5,465	1,195	651	19,104	25,855

(D) Withheld to avoid disclosing data for individual operations.

¹ Other States include Arkansas, Louisiana, Mississippi, Missouri, and Texas.

**Milled Rice Stocks by Length of Grain in All Positions – States and United States:
September 1, 2010 and 2011**

State	Whole kernels (head rice)							
	Long		Medium		Short		Total	
	2010	2011	2010	2011	2010	2011	2010	2011
	(1,000 cwt)	(1,000 cwt)	(1,000 cwt)	(1,000 cwt)	(1,000 cwt)	(1,000 cwt)	(1,000 cwt)	(1,000 cwt)
California	(D)	(D)	407	432	(D)	(D)	474	502
Other States ¹	(D)	(D)	162	118	(D)	(D)	2,481	1,792
United States	2,325	1,680	569	550	61	64	2,955	2,294

State	Broken kernels							
	Second heads		Screenings ²		Brewers		Total	
	2010	2011	2010	2011	2010	2011	2010	2011
	(1,000 cwt)	(1,000 cwt)	(1,000 cwt)	(1,000 cwt)	(1,000 cwt)	(1,000 cwt)	(1,000 cwt)	(1,000 cwt)
California	(D)	(D)	-	-	(D)	(D)	449	961
Other States ¹	(D)	(D)	106	97	(D)	(D)	622	738
United States	543	859	106	97	422	743	1,071	1,699

- Represents zero.

(D) Withheld to avoid disclosing data for individual operations.

¹ Other States include Arkansas, Louisiana, Mississippi, Missouri, and Texas.

² Screenings included with second heads in California.

Rice Stocks by Position – States and United States: August 1, 2010 and 2011

State	2010			2011		
	On farms	Off farms ¹	Total all positions	On farms	Off farms ¹	Total all positions
	(1,000 cwt)	(1,000 cwt)	(1,000 cwt)	(1,000 cwt)	(1,000 cwt)	(1,000 cwt)
Rough rice						
Arkansas	610	15,913	16,523	1,540	23,713	25,253
California	125	7,795	7,920	115	6,507	6,622
Louisiana	200	1,757	1,957	210	2,269	2,479
Mississippi	(D)	(D)	(D)	900	1,059	1,959
Missouri	(D)	(D)	(D)	(D)	(D)	2,216
Texas	(D)	(D)	2,387	(D)	(D)	3,160
Unallocated ²	265	3,711	1,589	1,007	4,369	-
United States	1,200	29,176	30,376	3,772	37,917	41,689
Milled rice						
Arkansas	(X)	1,681	1,681	(X)	(D)	(D)
California	(X)	874	874	(X)	1,705	1,705
Louisiana	(X)	684	684	(X)	196	196
Mississippi	(X)	(D)	(D)	(X)	(D)	(D)
Missouri	(X)	(D)	(D)	(X)	(D)	(D)
Texas	(X)	785	785	(X)	625	625
Unallocated ²	(X)	356	356	(X)	2,141	2,141
United States	(X)	4,380	4,380	(X)	4,667	4,667

- Represents zero.

(D) Withheld to avoid disclosing data for individual operations.

(X) Not applicable.

¹ Includes stocks at mills, elevators, warehouses, ports, and in transit.

² Unallocated includes State data withheld to avoid disclosure of individual operations.

**Rough Rice Stocks by Length of Grain in All Positions – States and United States:
August 1, 2010 and 2011**

State	Long		Medium		Short		Total	
	2010	2011	2010	2011	2010	2011	2010	2011
	(1,000 cwt)	(1,000 cwt)	(1,000 cwt)	(1,000 cwt)	(1,000 cwt)	(1,000 cwt)	(1,000 cwt)	(1,000 cwt)
California	183	(D)	6,424	5,526	1,313	(D)	7,920	6,622
Other States ¹	19,349	(D)	3,103	2,344	4	(D)	22,456	35,067
United States	19,532	32,847	9,527	7,870	1,317	972	30,376	41,689

(D) Withheld to avoid disclosing data for individual operations.

¹ Other States include Arkansas, Louisiana, Mississippi, Missouri, and Texas.

**Milled Rice Stocks by Length of Grain in All Positions – States and United States:
August 1, 2010 and 2011**

State	Whole kernels (head rice)							
	Long		Medium		Short		Total	
	2010	2011	2010	2011	2010	2011	2010	2011
	(1,000 cwt)	(1,000 cwt)	(1,000 cwt)	(1,000 cwt)	(1,000 cwt)	(1,000 cwt)	(1,000 cwt)	(1,000 cwt)
California	(D)	(D)	516	664	(D)	(D)	579	722
Other States ¹	(D)	(D)	283	181	(D)	(D)	2,791	2,092
United States	2,511	1,924	799	845	60	45	3,370	2,814

State	Broken kernels							
	Second heads		Screenings ²		Brewers		Total	
	2010	2011	2010	2011	2010	2011	2010	2011
	(1,000 cwt)	(1,000 cwt)	(1,000 cwt)	(1,000 cwt)	(1,000 cwt)	(1,000 cwt)	(1,000 cwt)	(1,000 cwt)
California	253	(D)	-	-	42	(D)	295	983
Other States ¹	417	(D)	93	75	205	(D)	715	870
United States	670	992	93	75	247	786	1,010	1,853

- Represents zero.

(D) Withheld to avoid disclosing data for individual operations.

¹ Other States include Arkansas, Louisiana, Mississippi, Missouri, and Texas.

² Screenings included with second heads in California.

Statistical Methodology

Survey Procedures: The rice stocks estimates in this report are based on surveys conducted during the first two weeks of September. Separate surveys were conducted to obtain the on-farm and off-farm estimates. The on-farm stocks survey is a probability survey based on a sampling procedure that ensures all operations storing rice in the United States have a chance to be selected. These producers were asked to provide the total quantities of grain stored on their operations as of September 1, 2011 regardless of ownership. Off-farm stocks are a census of all known rice storage facilities. An effort is made to obtain reports from all off-farm facilities. Estimates are made for missing facilities to assure complete coverage.

Estimating Procedures: On-farm and off-farm survey data are reviewed at the State and national levels for reasonableness, consistency with historical estimates, and current crop size. After estimates are made for on-farm and off-farm rice stocks, the total of these two are combined and evaluated using the balance sheet approach. This method utilizes other sources of data to check the reasonableness of the stocks estimates. Estimates of production, exports, and millings are reviewed to make sure beginning stocks, production, utilization, and ending stocks are within reasonable balance and present the best possible estimate of stocks.

Revision Policy: On-farm and off-farm stocks are subject to revision in the period following initial publication and again in the following December 1 *Rice Stocks* report published in January each year. Revisions can be made when late reports are received, errors are detected in reporting and calculating, and when production estimates are revised. Estimates will also be reviewed after data from the 5-year Census of Agriculture are available. No revisions to these years will be made after that date.

Reliability: Reliability of the on-farm and off-farm stocks must be treated separately because the survey designs for the two surveys are drastically different. The on-farm stocks estimates are subject to sampling variability because all operations holding on-farm stocks are not included in the sample.

Survey indications are also subject to non-sampling errors such as omission, duplication, imputation for missing data, and mistakes in reporting, recording, and processing the data. Off-farm, as well as on-farm stocks, are subject to these types of errors. These errors cannot be measured directly, but they are minimized through rigid quality controls in the data collection process and a careful review of all reported data for consistency and reasonableness.

Information Contacts

Listed below are the commodity statisticians in the Crops Branch of the National Agricultural Statistics Service to contact for additional information. E-mail inquiries may be sent to nass@nass.usda.gov

Lance Honig, Chief, Crops Branch.....	(202) 720-2127
Jacqueline Moore, Head, Field Crops Section.....	(202) 720-2127
Suzanne Avilla – Peanuts, Rice	(202) 720-7688
Bryan Durham – Oats, Rye, Wheat.....	(202) 720-8068
Steve Maliszewski – Cotton, Cotton Ginnings, Sorghum.....	(202) 720-5944
Anthony Prillaman – Corn, Flaxseed, Proso Millet	(202) 720-9526
Julie Schmidt – Crop Weather, Barley, Hay	(202) 720-7621
Travis Thorson – Soybeans, Sunflower, Other Oilseeds	(202) 720-7369

Access to NASS Reports

For your convenience, you may access NASS reports and products the following ways:

- All reports are available electronically, at no cost, on the NASS web site: <http://www.nass.usda.gov>
- Both national and state specific reports are available via a free e-mail subscription. To set-up this free subscription, visit <http://www.nass.usda.gov> and in the “Receive NASS Updates” box under “Receive reports by Email,” click on “National” or “State” to select the reports you would like to receive.
- Printed reports may be purchased from the National Technical Information Service (NTIS) by calling toll-free (800) 999-6779, or (703) 605-6220 if calling from outside the United States or Canada. Accepted methods of payment are Visa, MasterCard, check, or money order.

For more information on NASS surveys and reports, call the NASS Agricultural Statistics Hotline at (800) 727-9540, 7:30 a.m. to 4:00 p.m. ET, or e-mail: nass@nass.usda.gov.

The United States Department of Agriculture (USDA) prohibits discrimination in all its programs and activities on the basis of race, color, national origin, age, disability, and where applicable, sex, marital status, familial status, parental status, religion, sexual orientation, political beliefs, genetic information, reprisal, or because all or a part of an individual's income is derived from any public assistance program. (Not all prohibited bases apply to all programs.) Persons with disabilities who require alternative means for communication of program information (Braille, large print, audiotape, etc.) should contact USDA's TARGET Center at (202) 720-2600 (voice and TDD).

To file a complaint of discrimination, write to USDA, Assistant Secretary for Civil Rights, Office of the Assistant Secretary for Civil Rights, 1400 Independence Avenue, S.W., Stop 9410, Washington, DC 20250-9410, or call toll-free at (866) 632-9992 (English) or (800) 877-8339 (TDD) or (866) 377-8642 (English Federal-relay) or (800) 845-6136 (Spanish Federal-relay). USDA is an equal opportunity provider and employer.

USDA Data Users' Meeting
Monday October 17, 2011

Crowne Plaza Chicago-Metro
Chicago, Illinois 60661
312-829-5000

The USDA's National Agricultural Statistics Service will be organizing an open forum for data users. The purpose will be to provide updates on pending changes in the various statistical and information programs and seek comments and input from data users. Other USDA agencies to be represented will include the Agricultural Marketing Service, the Economic Research Service, the Foreign Agricultural Service, and the World Agricultural Outlook Board. The Foreign Trade Division from the Census Bureau will also be included in the meeting.

For registration details or additional information for the Data Users' Meeting, see the NASS homepage at <http://www.nass.usda.gov/meeting/> or contact Marie Jordan (NASS) at 202-690-8141 or at marie_jordan@nass.usda.gov.

This Data Users' Meeting precedes an Industry Outlook Meeting that will be held at the same location on Tuesday October 18, 2011. The Outlook meeting brings together analysts from various commodity sectors to discuss the outlook situation. For registration details or additional information for the Industry Outlook Meeting, see the Livestock and Marketing Information Center (LMIC) homepage at <http://www.lmic.info/> or contact Erica Rosa 303-236-0461 at rosa@lmic.info or Laura Lahr 303-236-0464 at lahr@lmic.info.