



ISSN: 1949-1603

Released January 12, 2016, by the National Agricultural Statistics Service (NASS), Agricultural Statistics Board, United States Department of Agriculture (USDA).

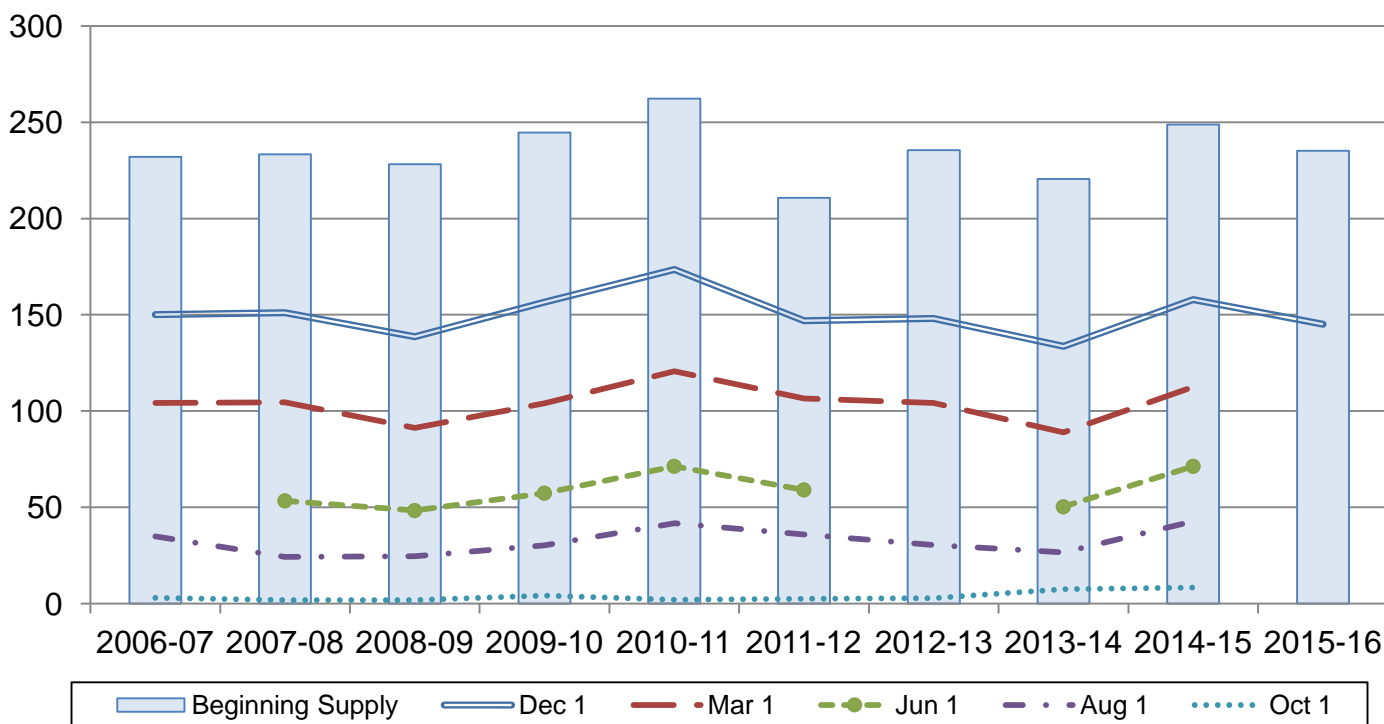
Rough Rice Stocks Down 8 Percent from December 2014

Rough rice stocks in all positions on December 1, 2015, totaled 145 million hundredweight (cwt), down 8 percent from the total on December 1, 2014. Stocks held on farms totaled 43.2 million cwt, and off-farm stocks totaled 102 million cwt. Long grain varieties accounted for 63 percent of the total rough rice, medium grain accounted for 35 percent, and short grain varieties accounted for 2 percent.

Milled rice stocks in all positions totaled 6.25 million cwt, up 11 percent from a year ago. Milled rice stocks were comprised of 4.07 million cwt of whole kernel rice and 2.18 million cwt of second heads, screenings, and brewers rice.

Rough Rice Stocks – United States

Million cwt



Rice Stocks by Position and Month – United States: 2014 and 2015 (Domestic Units)

Date	2014			2015		
	On farms	Off farms ¹	Total all positions	On farms	Off farms ¹	Total all positions
	(1,000 cwt)	(1,000 cwt)	(1,000 cwt)	(1,000 cwt)	(1,000 cwt)	(1,000 cwt)
Rough rice						
March 1	14,995	73,959	88,954	25,810	86,658	112,468
June 1	4,830	45,521	50,351	10,227	61,113	71,340
August 1	305	26,299	26,604	1,480	41,293	42,773
October 1 ²	15	7,523	7,538	70	8,238	8,308
December 1	47,865	110,061	157,926	43,245	101,804	145,049
Milled rice						
March 1	(X)	5,844	5,844	(X)	5,869	5,869
June 1	(X)	5,870	5,870	(X)	6,772	6,772
August 1	(X)	3,711	3,711	(X)	4,056	4,056
October 1 ²	(X)	1,113	1,113	(X)	3,003	3,003
December 1	(X)	5,646	5,646	(X)	6,245	6,245

(X) Not applicable.

¹ Includes stocks at mills, elevators, warehouses, ports, and in transit.

² California only.

Rice Stocks by Position and Month – United States: 2014 and 2015 (Metric Units)

[Data may not add to totals due to rounding]

Date	2014			2015		
	On farms	Off farms ¹	Total all positions	On farms	Off farms ¹	Total all positions
	(metric tons)	(metric tons)	(metric tons)	(metric tons)	(metric tons)	(metric tons)
Rough rice						
March 1	680,160	3,354,720	4,034,890	1,170,720	3,930,740	5,101,460
June 1	219,090	2,064,800	2,283,890	463,890	2,772,040	3,235,930
August 1	13,830	1,192,900	1,206,740	67,130	1,873,020	1,940,150
October 1 ²	680	341,240	341,920	3,180	373,670	376,840
December 1	2,171,120	4,992,280	7,163,400	1,961,560	4,617,750	6,579,310
Milled rice						
March 1	(X)	265,080	265,080	(X)	266,210	266,210
June 1	(X)	266,260	266,260	(X)	307,170	307,170
August 1	(X)	168,330	168,330	(X)	183,980	183,980
October 1 ²	(X)	50,480	50,480	(X)	136,210	136,210
December 1	(X)	256,100	256,100	(X)	283,270	283,270

(X) Not applicable.

¹ Includes stocks at mills, elevators, warehouses, ports, and in transit.

² California only.

Rice Stocks by Position – States and United States: December 1, 2014 and 2015

State	2014			2015		
	On farms	Off farms ¹	Total all positions	On farms	Off farms ¹	Total all positions
	(1,000 cwt)	(1,000 cwt)	(1,000 cwt)	(1,000 cwt)	(1,000 cwt)	(1,000 cwt)
Rough rice						
Arkansas	22,500	51,622	74,122	21,000	48,916	69,916
California	3,415	36,001	39,416	3,220	35,147	38,367
Louisiana	11,100	9,578	20,678	10,800	7,774	18,574
Mississippi	4,000	2,100	6,100	2,800	1,813	4,613
Missouri	(D)	(D)	8,842	(D)	(D)	7,278
Texas	(D)	(D)	8,768	(D)	(D)	6,301
Unallocated ²	6,850	10,760	-	5,425	8,154	-
United States	47,865	110,061	157,926	43,245	101,804	145,049
Milled rice						
Arkansas	(X)	1,714	1,714	(X)	2,227	2,227
California	(X)	2,490	2,490	(X)	2,196	2,196
Louisiana	(X)	(D)	(D)	(X)	(D)	(D)
Mississippi	(X)	(D)	(D)	(X)	(D)	(D)
Missouri	(X)	(D)	(D)	(X)	(D)	(D)
Texas	(X)	547	547	(X)	754	754
Unallocated ²	(X)	895	895	(X)	1,068	1,068
United States	(X)	5,646	5,646	(X)	6,245	6,245

- Represents zero.

(D) Withheld to avoid disclosing data for individual operations.

(X) Not applicable.

¹ Includes stocks at mills, elevators, warehouses, ports, and in transit.

² Unallocated includes State data withheld to avoid disclosure of individual operations.

**Rough Rice Stocks by Length of Grain in All Positions – States and United States:
December 1, 2014 and 2015**

State	Long		Medium		Short		Total	
	2014	2015	2014	2015	2014	2015	2014	2015
	(1,000 cwt)	(1,000 cwt)	(1,000 cwt)	(1,000 cwt)	(1,000 cwt)	(1,000 cwt)	(1,000 cwt)	(1,000 cwt)
California	(D)	(D)	36,358	35,193	(D)	(D)	39,416	38,367
Other States ¹	(D)	(D)	12,125	15,389	(D)	(D)	118,510	106,682
United States	106,786	91,814	48,483	50,582	2,657	2,653	157,926	145,049

(D) Withheld to avoid disclosing data for individual operations.

¹ Other States include Arkansas, Louisiana, Mississippi, Missouri, and Texas.

**Milled Rice Stocks by Length of Grain in All Positions – States and United States:
December 1, 2014 and 2015**

State	Whole kernels (head rice)							
	Long		Medium		Short		Total	
	2014	2015	2014	2015	2014	2015	2014	2015
	(1,000 cwt)	(1,000 cwt)	(1,000 cwt)	(1,000 cwt)	(1,000 cwt)	(1,000 cwt)	(1,000 cwt)	(1,000 cwt)
California	(D)	(D)	1,487	1,023	(D)	(D)	1,540	1,102
Other States ¹	(D)	(D)	207	256	(D)	(D)	2,513	2,968
United States	2,308	2,716	1,694	1,279	51	75	4,053	4,070
State	Broken kernels							
	Second heads		Screenings ²		Brewers		Total	
	2014	2015	2014	2015	2014	2015	2014	2015
	(1,000 cwt)	(1,000 cwt)	(1,000 cwt)	(1,000 cwt)	(1,000 cwt)	(1,000 cwt)	(1,000 cwt)	(1,000 cwt)
California	(D)	(D)	-	-	(D)	(D)	950	1,094
Other States ¹	(D)	(D)	118	56	(D)	(D)	643	1,081
United States	727	1,385	118	56	748	734	1,593	2,175

- Represents zero.

(D) Withheld to avoid disclosing data for individual operations.

¹ Other States include Arkansas, Louisiana, Mississippi, Missouri, and Texas.

² Screenings included with second heads in California.

Rough Rice Stocks by Length of Grain in All Positions – California: October 1, 2014 and 2015

State	Long		Medium		Short		Total	
	2014	2015	2014	2015	2014	2015	2014	2015
	(1,000 cwt)	(1,000 cwt)	(1,000 cwt)	(1,000 cwt)	(1,000 cwt)	(1,000 cwt)	(1,000 cwt)	(1,000 cwt)
California	(D)	(D)	6,691	7,892	(D)	(D)	7,538	8,308

(D) Withheld to avoid disclosing data for individual operations.

Milled Rice Stocks by Length of Grain in All Positions – California: October 1, 2014 and 2015

State	Whole kernels (head rice)							
	Long		Medium		Short		Total	
	2014	2015	2014	2015	2014	2015	2014	2015
	(1,000 cwt)	(1,000 cwt)	(1,000 cwt)	(1,000 cwt)	(1,000 cwt)	(1,000 cwt)	(1,000 cwt)	(1,000 cwt)
California	(D)	(D)	603	1,430	(D)	(D)	651	1,463
State	Broken kernels							
	Second heads		Screenings ¹		Brewers		Total	
	2014	2015	2014	2015	2014	2015	2014	2015
	(1,000 cwt)	(1,000 cwt)	(1,000 cwt)	(1,000 cwt)	(1,000 cwt)	(1,000 cwt)	(1,000 cwt)	(1,000 cwt)
California	(D)	(D)	-	-	(D)	(D)	462	1,540

- Represents zero.

(D) Withheld to avoid disclosing data for individual operations.

¹ Screenings included with second heads.

Rice Stocks by Position – States and United States: August 1, 2015

State	August 1, 2015		
	On farms	Off farms ¹	Total all positions
	(1,000 cwt)	(1,000 cwt)	(1,000 cwt)
Rough rice			
Arkansas	940	21,268	22,208
California	190	14,067	14,257
Louisiana	120	2,259	2,379
Mississippi	(D)	(D)	420
Missouri	(D)	(D)	1,506
Texas	(D)	(D)	2,003
Unallocated ²	230	3,699	-
United States	1,480	41,293	42,773
Milled rice			
Arkansas	(X)	1,454	1,454
California	(X)	1,575	1,575
Louisiana	(X)	(D)	(D)
Mississippi	(X)	(D)	(D)
Missouri	(X)	(D)	(D)
Texas	(X)	696	696
Unallocated ²	(X)	331	331
United States	(X)	4,056	4,056

- Represents zero.

(D) Withheld to avoid disclosing data for individual operations.

(X) Not applicable.

¹ Includes stocks at mills, elevators, warehouses, ports, and in transit.

² Unallocated includes State data withheld to avoid disclosure of individual operations.

Rice Stocks by Position – States and United States: June 1, 2015 and March 1, 2015

State	June 1, 2015			March 1, 2015		
	On farms	Off farms ¹	Total all positions	On farms	Off farms ¹	Total all positions
	(1,000 cwt)	(1,000 cwt)	(1,000 cwt)	(1,000 cwt)	(1,000 cwt)	(1,000 cwt)
Rough rice						
Arkansas	6,400	32,387	38,787	12,900	41,638	54,538
California	1,077	20,617	21,694	2,210	29,605	31,815
Louisiana	1,400	2,814	4,214	5,700	6,256	11,956
Mississippi	(D)	(D)	1,434	2,200	1,431	3,631
Missouri	(D)	(D)	2,004	(D)	(D)	4,548
Texas	480	2,727	3,207	(D)	(D)	5,980
Unallocated ²	870	2,568	-	2,800	7,728	-
United States	10,227	61,113	71,340	25,810	86,658	112,468
Milled rice						
Arkansas	(X)	2,128	2,128	(X)	1,621	1,621
California	(X)	3,175	3,175	(X)	2,928	2,928
Louisiana	(X)	(D)	(D)	(X)	(D)	(D)
Mississippi	(X)	(D)	(D)	(X)	(D)	(D)
Missouri	(X)	(D)	(D)	(X)	(D)	(D)
Texas	(X)	660	660	(X)	818	818
Unallocated ²	(X)	809	809	(X)	502	502
United States	(X)	6,772	6,772	(X)	5,869	5,869

- Represents zero.

(D) Withheld to avoid disclosing data for individual operations.

(X) Not applicable.

¹ Includes stocks at mills, elevators, warehouses, ports, and in transit.

² Unallocated includes State data withheld to avoid disclosure of individual operations.

Rough Rice Stocks in All Positions by Length of Grain and Month – States and United States: 2015

Date and State	Long (1,000 cwt)	Medium (1,000 cwt)	Short (1,000 cwt)	Total (1,000 cwt)
August 1				
California	(D)	13,431	(D)	14,257
Other States ¹	(D)	4,738	(D)	28,516
United States	23,917	18,169	687	42,773
June 1				
California	(D)	20,431	(D)	21,694
Other States ¹	(D)	7,557	(D)	49,646
United States	42,295	27,988	1,057	71,340
March 1				
California	(D)	29,788	(D)	31,815
Other States ¹	(D)	9,717	(D)	80,653
United States	71,243	39,505	1,720	112,468

(D) Withheld to avoid disclosing data for individual operations.

¹ Other States include Arkansas, Louisiana, Mississippi, Missouri, and Texas.

Milled Rice Stocks by Length of Grain in All Positions – States and United States: August 1, 2015

State	Whole kernels (head rice)			
	Long (1,000 cwt)	Medium (1,000 cwt)	Short (1,000 cwt)	Total (1,000 cwt)
California	(D)	(D)	(D)	822
Other States ¹	(D)	(D)	(D)	1,885
United States	1,792	878	37	2,707
State	Broken kernels			
	Second heads (1,000 cwt)	Screenings ² (1,000 cwt)	Brewers (1,000 cwt)	Total (1,000 cwt)
California	(D)	-	(D)	753
Other States ¹	(D)	88	(D)	596
United States	1,120	88	141	1,349

- Represents zero.

(D) Withheld to avoid disclosing data for individual operations.

¹ Other States include Arkansas, Louisiana, Mississippi, Missouri, and Texas.

² Screenings included with second heads in California.

Milled Rice Stocks by Length of Grain in All Positions – States and United States: June 1, 2015

State	Whole kernels (head rice)			
	Long (1,000 cwt)	Medium (1,000 cwt)	Short (1,000 cwt)	Total (1,000 cwt)
California	(D)	1,526	(D)	1,583
Other States ¹	(D)	136	(D)	2,656
United States	2,523	1,662	54	4,239

State	Broken kernels			
	Second heads (1,000 cwt)	Screenings ² (1,000 cwt)	Brewers (1,000 cwt)	Total (1,000 cwt)
California	(D)	-	(D)	1,592
Other States ¹	(D)	153	(D)	941
United States	1,227	153	1,153	2,533

- Represents zero.

(D) Withheld to avoid disclosing data for individual operations.

¹ Other States include Arkansas, Louisiana, Mississippi, Missouri, and Texas.

² Screenings included with second heads in California.

Milled Rice Stocks by Length of Grain in All Positions – States and United States: March 1, 2015

State	Whole kernels (head rice)			
	Long (1,000 cwt)	Medium (1,000 cwt)	Short (1,000 cwt)	Total (1,000 cwt)
California	(D)	1,002	(D)	1,066
Other States ¹	(D)	137	(D)	2,084
United States	1,952	1,139	59	3,150

State	Broken kernels			
	Second heads (1,000 cwt)	Screenings ² (1,000 cwt)	Brewers (1,000 cwt)	Total (1,000 cwt)
California	(D)	-	(D)	1,862
Other States ¹	(D)	115	(D)	857
United States	1,663	115	941	2,719

- Represents zero.

(D) Withheld to avoid disclosing data for individual operations.

¹ Other States include Arkansas, Louisiana, Mississippi, Missouri, and Texas.

² Screenings included with second heads in California.

Statistical Methodology

Survey Procedures: The rice stocks estimates in this report are based on surveys conducted during the first two weeks of December. Separate surveys were conducted to obtain the on-farm and off-farm estimates. The on-farm stocks survey is a probability survey based on a sampling procedure that ensures all operations storing rice in the United States have a chance to be selected. These producers were asked to provide the total quantities of grain stored on their operations as of December 1, 2015 regardless of ownership. Off-farm stocks are a census of all known rice storage facilities. An effort is made to obtain reports from all off-farm facilities. Estimates are made for missing facilities to assure complete coverage.

Estimating Procedures: On-farm and off-farm survey data are reviewed at the State and National levels for reasonableness, consistency with historical estimates, and current crop size. After estimates are made for on-farm and off-farm rice stocks, the total of these two are combined and evaluated using the balance sheet approach. This method utilizes other sources of data to check the reasonableness of the stocks estimates. Estimates of production, exports, and millings are reviewed to make sure beginning stocks, production, utilization, and ending stocks are within reasonable balance and present the best possible estimate of stocks.

Revision Policy: On-farm and off-farm stocks are subject to revision in the quarter following initial publication and again in the following December 1 *Rice Stocks* report published in January each year. Revisions can be made when late reports are received, errors are detected in reporting and calculating, and when production estimates are revised. Estimates will also be reviewed after data from the 5-year Census of Agriculture are available. No revisions to these years will be made after that date.

Reliability: Reliability of the on-farm and off-farm stocks must be treated separately because the survey designs for the two surveys are drastically different. The on-farm stocks estimates are subject to sampling variability because all operations holding on-farm stocks are not included in the sample.

Survey indications are also subject to non-sampling errors such as omission, duplication, imputation for missing data, and mistakes in reporting, recording, and processing the data. Off-farm, as well as on-farm stocks, are subject to these types of errors. These errors cannot be measured directly, but they are minimized through rigid quality controls in the data collection process and a careful review of all reported data for consistency and reasonableness.

Information Contacts

Listed below are the commodity statisticians in the Crops Branch of the National Agricultural Statistics Service to contact for additional information. E-mail inquiries may be sent to nass@nass.usda.gov

Lance Honig, Chief, Crops Branch	(202) 720-2127
Anthony Prillaman, Head, Field Crops Section	(202) 720-2127
Angie Considine – Cotton, Cotton Ginnings, Sorghum	(202) 720-5944
Tony Dahlman – Oats, Soybeans	(202) 690-3234
Chris Hawthorn – Corn, Flaxseed, Proso Millet	(202) 720-9526
James Johanson – County Estimates, Hay	(202) 690-8533
Scott Matthews – Crop Weather, Barley	(202) 720-7621
Jean Porter – Rye, Wheat	(202) 720-8068
Bianca Pruneda – Peanuts, Rice	(202) 720-7688
Travis Thorson – Sunflower, Other Oilseeds	(202) 720-7369

Access to NASS Reports

For your convenience, you may access NASS reports and products the following ways:

- All reports are available electronically, at no cost, on the NASS web site: <http://www.nass.usda.gov>
- Both national and state specific reports are available via a free e-mail subscription. To set-up this free subscription, visit <http://www.nass.usda.gov> and click on “National” or “State” in upper right corner above “search” box to create an account and select the reports you would like to receive.

For more information on NASS surveys and reports, call the NASS Agricultural Statistics Hotline at (800) 727-9540, 7:30 a.m. to 4:00 p.m. ET, or e-mail: nass@nass.usda.gov.

The U.S. Department of Agriculture (USDA) prohibits discrimination against its customers, employees, and applicants for employment on the basis of race, color, national origin, age, disability, sex, gender identity, religion, reprisal, and where applicable, political beliefs, marital status, familial or parental status, sexual orientation, or all or part of an individual's income is derived from any public assistance program, or protected genetic information in employment or in any program or activity conducted or funded by the Department. (Not all prohibited bases will apply to all programs and/or employment activities.)

If you wish to file a Civil Rights program complaint of discrimination, complete the [USDA Program Discrimination Complaint Form](#) (PDF), found online at http://www.ascr.usda.gov/complaint_filing_cust.html, or at any USDA office, or call (866) 632-9992 to request the form. You may also write a letter containing all of the information requested in the form. Send your completed complaint form or letter to us by mail at U.S. Department of Agriculture, Director, Office of Adjudication, 1400 Independence Avenue, S.W., Washington, D.C. 20250-9410, by fax (202) 690-7442 or email at program.intake@usda.gov.



United States Department of Agriculture

USDA's
92nd
Annual

Agricultural Outlook Forum

TRANSFORMING AGRICULTURE

BLENDING TECHNOLOGY AND TRADITION



February 25-26, 2016
Crystal Gateway Marriot Hotel
Arlington, Virginia

Register at www.usda.gov/oce/forum