



Released January 23, 2026, by the National Agricultural Statistics Service (NASS), Agricultural Statistics Board, United States Department of Agriculture (USDA).

## December Milk Production up 4.6 percent

**Milk production** in the 24 major States during December totaled 18.8 billion pounds, up 4.6 percent from December 2024. November revised production, at 18.1 billion pounds, was up 4.7 percent from November 2024. The November revision represented an increase of 3 million pounds or less than 0.1 percent from last month's preliminary production estimate.

**Production per cow** in the 24 major States averaged 2,060 pounds for December, 42 pounds above December 2024.

**The number of milk cows** on farms in the 24 major States was 9.14 million head, 222,000 head more than December 2024, and 9,000 head more than November 2025.

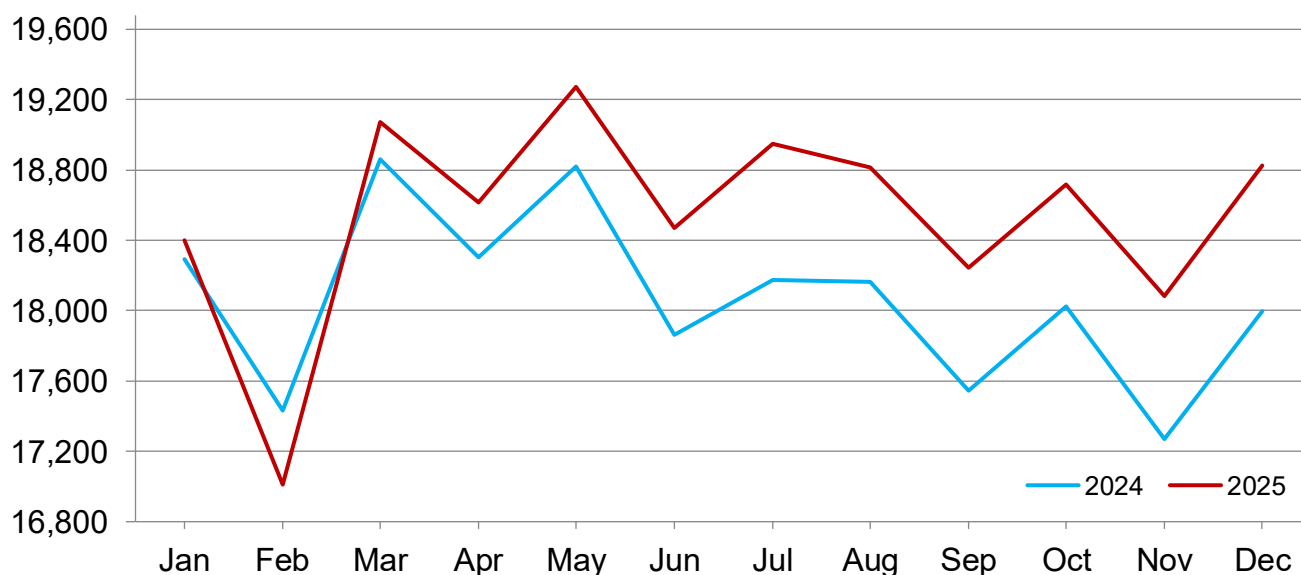
## October-December Milk Production up 4.2 percent

**Milk production** in the United States during the October - December quarter totaled 57.8 billion pounds, up 4.2 percent from the October - December quarter last year.

**The average number of milk cows** in the United States during the quarter was 9.56 million head, 23,000 head more than the July - September quarter, and 202,000 head more than the same period last year.

## Monthly Milk Production – 24 Selected States

Million pounds



## Milk Cows and Production by Quarter – United States: 2024-2025

[May not add due to rounding]

Quarter	Milk cows <sup>1</sup>		Milk per cow <sup>2</sup>		Milk production <sup>2</sup>		
	2024	2025	2024	2025	2024	2025	Change from 2024
	(1,000 head)	(1,000 head)	(pounds)	(pounds)	(million pounds)	(million pounds)	(percent)
January-March .....	9,338	9,401	6,098	6,039	56,943	56,773	-0.3
April-June .....	9,330	9,458	6,145	6,206	57,333	58,697	2.4
July-September .....	9,341	9,539	6,004	6,100	56,085	58,192	3.8
October-December .....	9,360	9,562	5,930	6,047	55,507	57,820	4.2
Annual .....	9,342	9,490	24,178	24,392	225,868	231,482	2.5

<sup>1</sup> Includes dry cows. Excludes heifers not yet fresh.

<sup>2</sup> Excludes milk sucked by calves.

## Milk Cows and Production by Month – 24 Selected States: 2024-2025

[May not add due to rounding]

Month	Milk cows <sup>1</sup>		Milk per cow <sup>2</sup>		Milk production <sup>2</sup>		
	2024	2025	2024	2025	2024	2025	Change from 2024
	(1,000 head)	(1,000 head)	(pounds)	(pounds)	(million pounds)	(million pounds)	(percent)
January .....	8,871	8,950	2,062	2,056	18,293	18,401	0.6
February .....	8,888	8,955	1,961	1,900	17,432	17,011	-2.4
March .....	8,892	8,976	2,121	2,125	18,861	19,075	1.1
April .....	8,890	8,998	2,059	2,069	18,305	18,618	1.7
May .....	8,886	9,026	2,118	2,135	18,821	19,273	2.4
June .....	8,878	9,032	2,012	2,045	17,861	18,470	3.4
July .....	8,886	9,068	2,045	2,090	18,175	18,951	4.3
August .....	8,903	9,108	2,040	2,065	18,164	18,812	3.6
September .....	8,911	9,145	1,969	1,995	17,544	18,245	4.0
October .....	8,927	9,132	2,019	2,049	18,025	18,716	3.8
November .....	8,919	9,129	1,936	1,981	17,270	18,081	4.7
December .....	8,916	9,138	2,018	2,060	17,996	18,823	4.6
Annual .....	8,897	9,055	24,362	24,569	216,747	222,476	2.6

<sup>1</sup> Includes dry cows. Excludes heifers not yet fresh.

<sup>2</sup> Excludes milk sucked by calves.

## Estimated Milk Cows and Production by Month – United States: 2024-2025

[May not add due to rounding]

Month	Milk cows <sup>1</sup>		Milk per cow <sup>2</sup>		Milk production <sup>2</sup>		
	2024	2025	2024	2025	2024	2025	Change from 2024
	(1,000 head)	(1,000 head)	(pounds)	(pounds)	(million pounds)	(million pounds)	(percent)
January .....	9,324	9,390	2,047	2,042	19,083	19,173	0.5
February .....	9,343	9,395	1,946	1,887	18,185	17,726	-2.5
March .....	9,347	9,417	2,105	2,110	19,675	19,874	1.0
April .....	9,336	9,436	2,044	2,055	19,082	19,390	1.6
May .....	9,331	9,466	2,103	2,120	19,624	20,071	2.3
June .....	9,323	9,472	1,998	2,031	18,627	19,236	3.3
July .....	9,326	9,497	2,029	2,073	18,918	19,690	4.1
August .....	9,344	9,542	2,023	2,048	18,906	19,546	3.4
September .....	9,353	9,579	1,952	1,979	18,261	18,956	3.8
October .....	9,367	9,561	2,004	2,035	18,775	19,456	3.6
November .....	9,359	9,558	1,922	1,967	17,988	18,796	4.5
December .....	9,355	9,567	2,004	2,045	18,744	19,568	4.4
Annual .....	9,342	9,490	24,178	24,392	225,868	231,482	2.5

<sup>1</sup> Includes dry cows. Excludes heifers not yet fresh.

<sup>2</sup> Excludes milk sucked by calves.

## Milk Cows and Production – 24 Selected States: December 2024 and 2025

[May not add due to rounding]

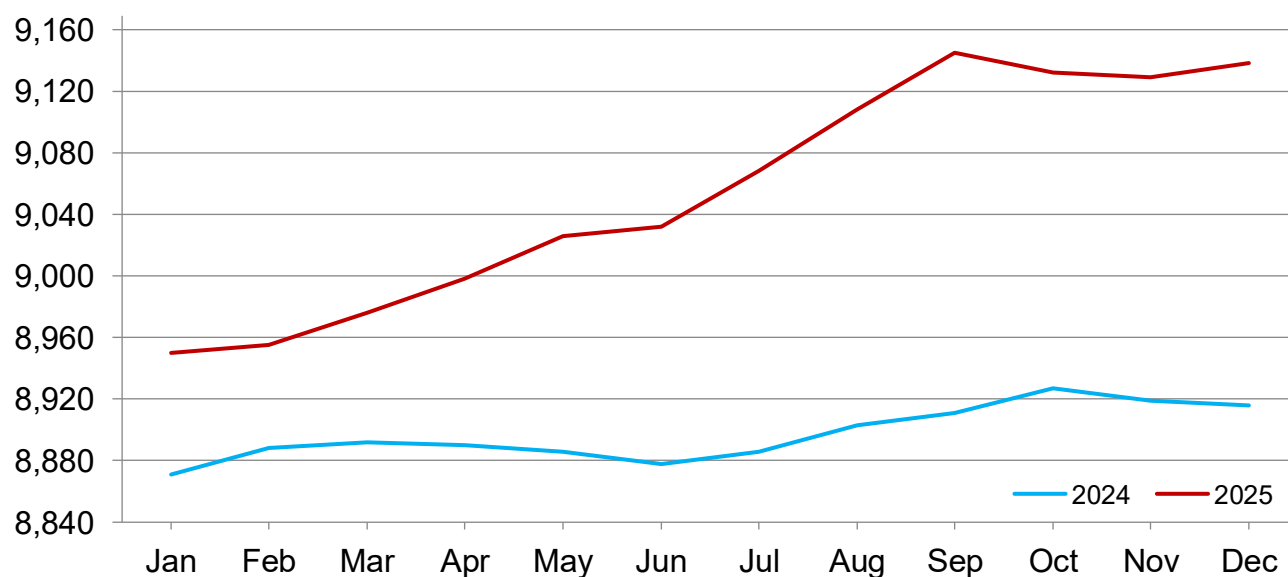
State	Milk cows <sup>1</sup>		Milk per cow <sup>2</sup>		Milk production <sup>2</sup>		
	2024	2025	2024	2025	2024	2025	Change from 2024
	(1,000 head)	(1,000 head)	(pounds)	(pounds)	(million pounds)	(million pounds)	(percent)
Arizona .....	189	196	2,095	2,080	396	408	3.0
California .....	1,709	1,712	1,855	2,030	3,170	3,475	9.6
Colorado .....	205	210	2,195	2,190	450	460	2.2
Florida .....	96	98	1,745	1,775	168	174	3.6
Georgia .....	85	89	2,010	2,045	171	182	6.4
Idaho .....	685	725	2,115	2,110	1,449	1,530	5.6
Illinois .....	77	76	1,830	1,830	141	139	-1.4
Indiana .....	190	195	2,010	2,020	382	394	3.1
Iowa .....	245	245	2,060	2,080	505	510	1.0
Kansas .....	180	225	1,995	2,015	359	453	26.2
Michigan .....	440	460	2,315	2,315	1,019	1,065	4.5
Minnesota .....	440	455	1,965	1,975	865	899	3.9
New Mexico .....	240	230	2,060	2,045	494	470	-4.9
New York .....	630	650	2,135	2,150	1,345	1,398	3.9
Ohio .....	250	255	1,910	1,920	478	490	2.5
Oregon .....	111	120	1,710	1,725	190	207	8.9
Pennsylvania .....	465	455	1,765	1,760	821	801	-2.4
South Dakota .....	215	240	1,965	1,960	422	470	11.4
Texas .....	675	705	2,195	2,200	1,482	1,551	4.7
Utah .....	91	97	1,935	1,945	176	189	7.4
Vermont .....	113	115	1,840	1,820	208	209	0.5
Virginia .....	66	65	1,780	1,780	117	116	-0.9
Washington .....	254	235	1,970	2,000	500	470	-6.0
Wisconsin .....	1,265	1,285	2,125	2,150	2,688	2,763	2.8
24-State Total .....	8,916	9,138	2,018	2,060	17,996	18,823	4.6

<sup>1</sup> Includes dry cows. Excludes heifers not yet fresh.

<sup>2</sup> Excludes milk sucked by calves.

## Monthly Milk Cows – 24 Selected States

Thousand head



## Milk Cows and Production – 24 Selected States: November 2024 and 2025

[May not add due to rounding]

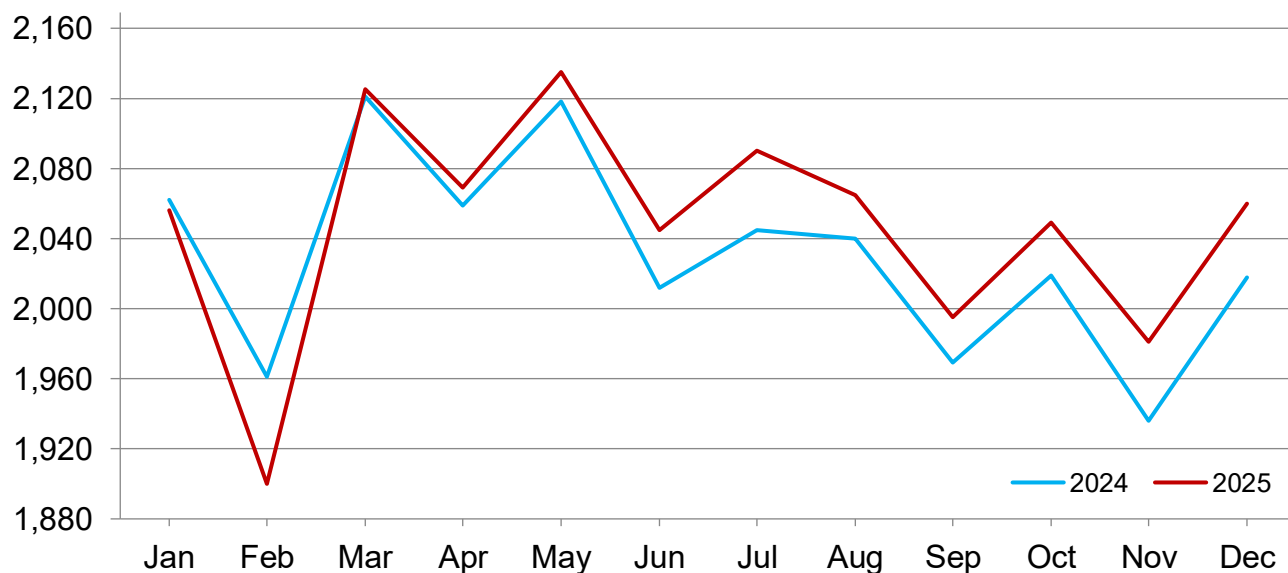
	Milk cows <sup>1</sup>		Milk per cow <sup>2</sup>		Milk production <sup>2</sup>		Change from 2024
	2024	2025	2024	2025	2024	2025	
	(1,000 head)	(1,000 head)	(pounds)	(pounds)	(million pounds)	(million pounds)	(percent)
Arizona .....	189	196	1,955	1,955	369	383	3.8
California .....	1,709	1,712	1,755	1,945	2,999	3,330	11.0
Colorado .....	204	210	2,105	2,100	429	441	2.8
Florida .....	96	98	1,615	1,655	155	162	4.5
Georgia .....	85	89	1,890	1,935	161	172	6.8
Idaho .....	680	721	2,045	2,035	1,391	1,467	5.5
Illinois .....	77	76	1,740	1,740	134	132	-1.5
Indiana .....	190	194	1,950	1,970	371	382	3.0
Iowa .....	244	245	1,995	2,005	487	491	0.8
Kansas .....	180	223	1,940	1,955	349	436	24.9
Michigan .....	440	459	2,235	2,240	983	1,028	4.6
Minnesota .....	442	455	1,890	1,905	835	867	3.8
New Mexico .....	240	233	1,960	1,955	470	456	-3.0
New York .....	630	650	2,065	2,090	1,301	1,359	4.5
Ohio .....	251	254	1,830	1,835	459	466	1.5
Oregon .....	116	120	1,680	1,680	195	202	3.6
Pennsylvania .....	465	455	1,690	1,690	786	769	-2.2
South Dakota .....	215	239	1,900	1,900	409	454	11.0
Texas .....	675	703	2,110	2,125	1,424	1,494	4.9
Utah .....	91	97	1,870	1,875	170	182	7.1
Vermont .....	113	115	1,770	1,780	200	205	2.5
Virginia .....	66	66	1,690	1,685	112	111	-0.9
Washington .....	255	236	1,905	1,930	486	455	-6.4
Wisconsin .....	1,266	1,283	2,050	2,055	2,595	2,637	1.6
24-State Total .....	8,919	9,129	1,936	1,981	17,270	18,081	4.7

<sup>1</sup> Includes dry cows. Excludes heifers not yet fresh.

<sup>2</sup> Excludes milk sucked by calves.

## Monthly Milk per Cow – 24 Selected States

Pounds



# Milk Cows and Production – States and United States: Revised July - September 2024 and 2025

[May not add due to rounding]

State	July - September milk cows <sup>1</sup>		July - September milk production <sup>2</sup>		
	2024	2025	2024	2025	Change from 2024
	(1,000 head)	(1,000 head)	(million pounds)	(million pounds)	(percent)
Alabama .....	2.0	(D)	5.5	(D)	(X)
Alaska .....	(D)	(D)	(D)	(D)	(X)
Arizona .....	191.0	199.0	1,074.0	1,132.0	5.4
Arkansas .....	2.0	(D)	6.0	(D)	(X)
California .....	1,707.0	1,714.0	9,903.0	10,209.0	3.1
Colorado .....	201.0	211.0	1,304.0	1,384.0	6.1
Connecticut .....	17.5	(D)	105.0	(D)	(X)
Delaware .....	2.6	(D)	10.8	(D)	(X)
Florida .....	98.0	98.0	471.0	493.0	4.7
Georgia .....	85.0	89.0	467.0	514.0	10.1
Hawaii .....	(D)	(D)	(D)	(D)	(X)
Idaho .....	670.0	723.0	4,360.0	4,752.0	9.0
Illinois .....	77.0	76.0	405.0	401.0	-1.0
Indiana .....	189.0	191.0	1,121.0	1,134.0	1.2
Iowa .....	242.0	244.0	1,484.0	1,508.0	1.6
Kansas .....	179.0	216.0	1,066.0	1,294.0	21.4
Kentucky .....	41.0	38.0	198.0	184.0	-7.1
Louisiana .....	6.5	(D)	18.0	(D)	(X)
Maine .....	24.0	23.0	136.0	138.0	1.5
Maryland .....	38.0	37.0	197.0	193.0	-2.0
Massachusetts .....	9.0	(D)	45.0	(D)	(X)
Michigan .....	437.0	456.0	3,029.0	3,171.0	4.7
Minnesota .....	442.0	449.0	2,593.0	2,680.0	3.4
Mississippi .....	5.0	(D)	13.5	(D)	(X)
Missouri .....	56.0	53.0	186.0	177.0	-4.8
Montana .....	8.5	(D)	49.0	(D)	(X)
Nebraska .....	50.0	50.0	309.0	305.0	-1.3
Nevada .....	31.0	34.0	196.0	217.0	10.7
New Hampshire .....	9.5	(D)	50.0	(D)	(X)
New Jersey .....	3.9	(D)	20.0	(D)	(X)
New Mexico .....	239.0	237.0	1,444.0	1,433.0	-0.8
New York .....	630.0	645.0	4,044.0	4,212.0	4.2
North Carolina .....	37.0	35.0	201.0	197.0	-2.0
North Dakota .....	9.5	(D)	57.0	(D)	(X)
Ohio .....	252.0	251.0	1,422.0	1,416.0	-0.4
Oklahoma .....	41.0	44.0	176.0	190.0	8.0
Oregon .....	118.0	122.0	624.0	651.0	4.3
Pennsylvania .....	465.0	460.0	2,388.0	2,399.0	0.5
Rhode Island .....	0.5	(D)	2.0	(D)	(X)
South Carolina .....	8.0	(D)	32.0	(D)	(X)
South Dakota .....	214.0	234.0	1,265.0	1,393.0	10.1
Tennessee .....	24.0	22.0	109.0	97.0	-11.0
Texas .....	667.0	701.0	4,263.0	4,572.0	7.2
Utah .....	92.0	98.0	541.0	582.0	7.6
Vermont .....	113.0	115.0	611.0	636.0	4.1
Virginia .....	66.0	66.0	337.0	342.0	1.5
Washington .....	260.0	238.0	1,579.0	1,454.0	-7.9
West Virginia .....	4.0	(D)	14.5	(D)	(X)
Wisconsin .....	1,267.0	1,274.0	8,088.0	8,246.0	2.0
Wyoming .....	9.0	(D)	63.9	(D)	(X)
Other States <sup>3</sup> .....	0.9	96.1	2.1	485.6	(X)
United States .....	9,341.0	9,539.0	56,085.0	58,192.0	3.8

(D) Withheld to avoid disclosing data for individual operations.

(X) Not applicable.

<sup>1</sup> Includes dry cows. Excludes heifers not yet fresh.

<sup>2</sup> Excludes milk sucked by calves.

<sup>3</sup> Other States includes Alaska and Hawaii.

# Milk Cows and Production – States and United States: Preliminary October - December 2024 and 2025

[May not add due to rounding]

State	October - December milk cows <sup>1</sup>		October - December milk production <sup>2</sup>		
	2024	2025	2024	2025	Change from 2024
	(1,000 head)	(1,000 head)	(million pounds)	(million pounds)	(percent)
Alabama .....	2.0	(D)	6.0	(D)	(X)
Alaska .....	(D)	(D)	(D)	(D)	(X)
Arizona .....	189.0	196.0	1,137.0	1,174.0	3.3
Arkansas .....	2.0	(D)	5.5	(D)	(X)
California .....	1,709.0	1,712.0	9,365.0	10,214.0	9.1
Colorado .....	205.0	210.0	1,329.0	1,360.0	2.3
Connecticut .....	17.5	(D)	104.0	(D)	(X)
Delaware .....	2.6	(D)	11.2	(D)	(X)
Florida .....	97.0	98.0	477.0	500.0	4.8
Georgia .....	85.0	89.0	496.0	530.0	6.9
Hawaii .....	(D)	(D)	(D)	(D)	(X)
Idaho .....	680.0	722.0	4,290.0	4,538.0	5.8
Illinois .....	77.0	76.0	412.0	408.0	-1.0
Indiana .....	190.0	194.0	1,129.0	1,166.0	3.3
Iowa .....	244.0	245.0	1,500.0	1,513.0	0.9
Kansas .....	180.0	223.0	1,071.0	1,335.0	24.6
Kentucky .....	41.0	38.0	200.0	185.0	-7.5
Louisiana .....	7.0	(D)	21.0	(D)	(X)
Maine .....	24.0	23.0	133.0	133.0	-
Maryland .....	38.0	37.0	201.0	196.0	-2.5
Massachusetts .....	9.0	(D)	44.0	(D)	(X)
Michigan .....	440.0	459.0	3,025.0	3,162.0	4.5
Minnesota .....	441.0	455.0	2,569.0	2,671.0	4.0
Mississippi .....	5.0	(D)	14.5	(D)	(X)
Missouri .....	56.0	54.0	185.0	180.0	-2.7
Montana .....	8.5	(D)	48.0	(D)	(X)
Nebraska .....	49.0	50.0	309.0	309.0	-
Nevada .....	31.0	33.0	197.0	210.0	6.6
New Hampshire .....	9.5	(D)	50.0	(D)	(X)
New Jersey .....	3.8	(D)	20.0	(D)	(X)
New Mexico .....	241.0	233.0	1,461.0	1,401.0	-4.1
New York .....	630.0	649.0	3,988.0	4,153.0	4.1
North Carolina .....	37.0	36.0	203.0	205.0	1.0
North Dakota .....	9.5	(D)	56.0	(D)	(X)
Ohio .....	251.0	254.0	1,409.0	1,435.0	1.8
Oklahoma .....	40.0	44.0	184.0	202.0	9.8
Oregon .....	115.0	120.0	593.0	623.0	5.1
Pennsylvania .....	465.0	457.0	2,409.0	2,368.0	-1.7
Rhode Island .....	0.5	(D)	2.1	(D)	(X)
South Carolina .....	8.0	(D)	35.0	(D)	(X)
South Dakota .....	215.0	238.0	1,259.0	1,394.0	10.7
Tennessee .....	24.0	22.0	107.0	99.0	-7.5
Texas .....	675.0	703.0	4,408.0	4,591.0	4.2
Utah .....	91.0	97.0	522.0	562.0	7.7
Vermont .....	113.0	115.0	616.0	627.0	1.8
Virginia .....	66.0	66.0	342.0	341.0	-0.3
Washington .....	256.0	236.0	1,504.0	1,402.0	-6.8
West Virginia .....	4.0	(D)	14.5	(D)	(X)
Wisconsin .....	1,266.0	1,283.0	7,980.0	8,152.0	2.2
Wyoming .....	9.0	(D)	62.9	(D)	(X)
Other States <sup>3</sup> .....	0.9	95.4	2.0	480.7	(X)
United States .....	9,360.0	9,562.0	55,507.0	57,820.0	4.2

- Represents zero.

(D) Withheld to avoid disclosing data for individual operations.

(X) Not applicable.

<sup>1</sup> Includes dry cows. Excludes heifers not yet fresh.

<sup>2</sup> Excludes milk sucked by calves.

<sup>3</sup> Other States includes states not published.

## Statistical Methodology

**Survey Procedures:** Primary data used to determine these estimates were obtained from a sample of producers. Individual States maintain a list of all known milk producers and information on the size of their herd. States use all known sources of producers to ensure that their lists are as complete as possible. Generally, all large producers and a sample of small producers are included in the survey. Questionnaires are mailed to producers near the end of the month to obtain data for the first day of the month. Additional reports are obtained by telephone, as needed, to supplement the mail response. Where feasible, States utilize state and federal administrative data to estimate milk production. This eliminates duplication of data gathering by different government agencies. Indications of milk cow inventory are also obtained in the January Cattle Surveys.

**Estimation Procedures:** Regional Field Offices prepare these estimates by using a combination of survey indications, historic trends, and any available administrative data. Individual State estimates are reviewed by the Agricultural Statistics Board for reasonableness.

**Revision Policy:** Milk production, milk per cow, and number of milk cows are subject to revision the following month after initial publication for monthly States or the following quarter for the quarterly States. Normally, administrative data from Federal Market Orders, State Departments of Agriculture, or other sources are the main basis for revisions. However, administrative data for all States may not be available in time for these revisions. Estimates are again subject to revisions in February each year based on additional administrative data. In the event that additional changes are necessary, a third revision is possible in February the following year. Estimates are again reviewed after data from the five-year Census of Agriculture are available. No revisions are made after that date.

**Reliability:** Since all operations with dairy animals are not included in the sample, survey estimates are subject to sampling variability. Survey results are also subject to non-sampling errors such as omissions, duplications, and mistakes in reporting, recording, and processing the data. The effects of these errors cannot be measured directly. They are minimized through rigid quality controls in the data collection process and through a careful review of all reported data for consistency and reasonableness.

To assist users in evaluating the reliability of the estimates in this report, the "Root Mean Square Error" is shown for selected items on the next page. The "Root Mean Square Error" is a statistical measure based on past performance and is computed using the differences between first and final estimates. The "Root Mean Square Error" for milk production estimates over the past 20 quarters is 0.1 percent. This means that chances are 2 out of 3 that the final estimate will not be above or below the current estimate of 57.8 billion pounds by more than 0.1 percent. Chances are 9 out of 10 that the difference will not exceed 0.2 percent.

### Reliability of Quarterly Milk Production Estimates

[Based on data for the past 20 quarters]

Item	Root mean square error	90 percent confidence level	Difference between first and latest estimate				
			Average	Smallest	Largest	Quarters	
						Below latest	Above latest
	(percent)	(percent)	(1,000)	(1,000)	(1,000)	(number)	(number)
Milk production .....	0.1	0.2	63	1	184	9	11
All milk cows .....	0.1	0.2	7	1	16	8	12

## Information Contacts

Listed below are the commodity specialists in the Livestock Branch of the National Agricultural Statistics Service to contact for additional information. E-mail inquiries may be sent to [nass@usda.gov](mailto:nass@usda.gov).

Travis Averill, Chief, Livestock Branch .....	(202) 692-0069
Sherry Bertramsen – Livestock Slaughter.....	(202) 690-8632
Tiffany Byrne – Dairy Products .....	(651) 440-7789
Ryan Cowen – Cattle, Cattle on Feed.....	(202) 720-3040
Kim DaPra – Milk Production.....	(202) 720-3278
Fatema Haque – Poultry Slaughter, Turkey Hatchery, Turkeys Raised.....	(202) 720-3244
Derron Martin – Catfish, Census of Aquaculture, Egg Products, Trout .....	(202) 690-3237
Ralph Mondesir – Hogs and Pigs .....	(202) 720-3106
Suzanne Richards – Cost of Pollination, Honey, Honey Bee Colonies, Sheep and Goats .....	(202) 720-4448
Shulonda Shaw – Capacity of Refrigerated Warehouses, Cold Storage .....	(202) 720-3240
Autumn Stone – Layers, Eggs .....	(202) 690-3676
Takiyah Walker – Broiler Hatchery, Chicken Hatchery.....	(202) 720-6147

## Access to NASS Reports

For your convenience, you may access NASS reports and products the following ways:

- All reports are available electronically, at no cost, on the NASS web site: [www.nass.usda.gov](http://www.nass.usda.gov).
- Both national and state specific reports are available via a free e-mail subscription. To set-up this free subscription, visit [www.nass.usda.gov](http://www.nass.usda.gov) and click on “National” or “State” in upper right corner above “search” box to create an account and select the reports you would like to receive.
- Cornell’s Mann Library has launched a new website housing NASS’s and other agency’s archived reports. The new website, <https://usda.library.cornell.edu>. All email subscriptions containing reports will be sent from the new website, <https://usda.library.cornell.edu>. To continue receiving the reports via e-mail, you will have to go to the new website, create a new account and re-subscribe to the reports. If you need instructions to set up an account or subscribe, they are located at: <https://usda.library.cornell.edu/help>. You should whitelist [notifications@usda-esmis.library.cornell.edu](mailto:notifications@usda-esmis.library.cornell.edu) in your email client to avoid the emails going into spam/junk folders.

For more information on NASS surveys and reports, call the NASS Agricultural Statistics Hotline at (800) 727-9540, 7:30 a.m. to 4:00 p.m. ET, or e-mail: [nass@usda.gov](mailto:nass@usda.gov).

The U.S. Department of Agriculture (USDA) prohibits discrimination against its customers, employees, and applicants for employment on the basis of race, color, national origin, age, disability, sex, gender identity, religion, reprisal, and where applicable, political beliefs, marital status, familial or parental status, sexual orientation, or all or part of an individual's income is derived from any public assistance program, or protected genetic information in employment or in any program or activity conducted or funded by the Department. (Not all prohibited bases will apply to all programs and/or employment activities.)

If you wish to file a Civil Rights program complaint of discrimination, complete the [USDA Program Discrimination Complaint Form](#) (PDF), found online at [www.ascr.usda.gov/filing-program-discrimination-complaint-usda-customer](http://www.ascr.usda.gov/filing-program-discrimination-complaint-usda-customer), or at any USDA office, or call (866) 632-9992 to request the form. You may also write a letter containing all of the information requested in the form. Send your completed complaint form or letter to us by mail at U.S. Department of Agriculture, Director, Office of Adjudication, 1400 Independence Avenue, S.W., Washington, D.C. 20250-9410, by fax (202) 690-7442 or email at [program.intake@usda.gov](mailto:program.intake@usda.gov).



U.S. DEPARTMENT OF AGRICULTURE

# USDA's 102nd Annual Agricultural Outlook Forum

Hybrid



February 19-20, 2026 • Crystal Gateway Marriott, Arlington VA

## **Registration is now open to USDA's 102nd Agricultural Outlook Forum!**

USDA's 102nd Annual Agricultural Outlook Forum will be held at the Crystal City Gateway Marriott on February 19-20, 2026, and all Forum sessions will be livestreamed on a virtual platform. Join USDA's new Chief Economist, Justin Benavidez, as he unveils the USDA's initial 2026 forecast for the agricultural economy, commodity markets, trade, and farm income. Hear how cutting-edge technologies and artificial intelligence are modernizing agricultural production practices and reshaping markets. Learn from more than 80 subject matter experts, executives, and academics as they explore some of the most pressing issues impacting agriculture. Explore USDA's agency exhibits and discover recent USDA-funded innovations along with the Department's key programs and activities.

*Join us in-person or virtually.*

To see the Forum program and register, visit:

[The 2026 Forum Website](#)