



Released December 22, 2025, by the National Agricultural Statistics Service (NASS), Agricultural Statistics Board, United States Department of Agriculture (USDA).

November Milk Production up 4.7 Percent

Milk production in the 24 major States during November totaled 18.1 billion pounds, up 4.7 percent from November 2024. October revised production, at 18.7 billion pounds, was up 3.8 percent from October 2024. The October revision represented a decrease of 11 million pounds or 0.1 percent from last month's preliminary production estimate.

Production per cow in the 24 major States averaged 1,979 pounds for November, 43 pounds above November 2024.

The number of milk cows on farms in the 24 major States was 9.13 million head, 214,000 head more than November 2024, and 1,000 head more than October 2025.

November Milk Production in the United States up 4.5 Percent

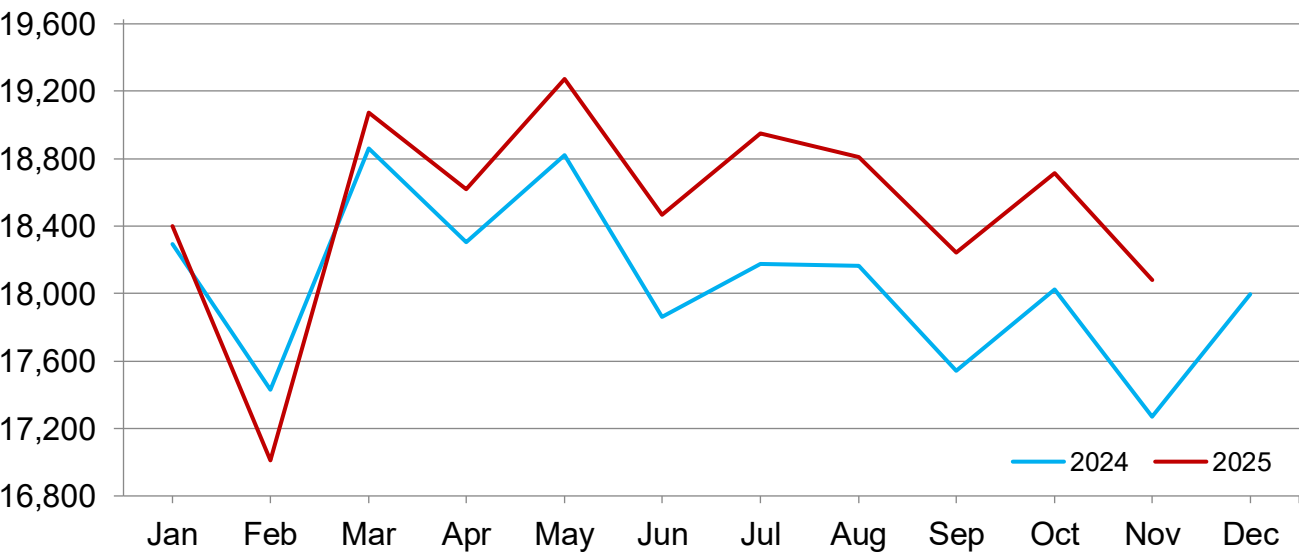
Milk production in the United States during November totaled 18.8 billion pounds, up 4.5 percent from November 2024.

Production per cow in the United States averaged 1,963 pounds for November, 41 pounds above November 2024.

The number of milk cows on farms in the United States was 9.57 million head, 211,000 head more than November 2024, but unchanged from October 2025.

Monthly Milk Production - 24 Selected States

Million pounds



Milk Cows and Production by Quarter – United States: 2024-2025

[May not add due to rounding. Blank data cells indicate estimation period has not yet begun]

Quarter	Milk cows ¹		Milk per cow ²		Milk production ²		
	2024	2025	2024	2025	2024	2025	Change from 2024
	(1,000 head)	(1,000 head)	(pounds)	(pounds)	(million pounds)	(million pounds)	(percent)
January-March	9,338	9,401	6,098	6,039	56,943	56,773	-0.3
April-June	9,330	9,458	6,145	6,206	57,333	58,697	2.4
July-September	9,341	9,540	6,004	6,099	56,085	58,187	3.7
October-December	9,360		5,930		55,507		
Annual	9,342		24,178		225,868		

¹ Includes dry cows. Excludes heifers not yet fresh.

² Excludes milk sucked by calves.

Milk Cows and Production by Month – 24 Selected States: 2024-2025

[May not add due to rounding. Blank data cells indicate estimation period has not yet begun]

Month	Milk cows ¹		Milk per cow ²		Milk production ²		
	2024	2025	2024	2025	2024	2025	Change from 2024
	(1,000 head)	(1,000 head)	(pounds)	(pounds)	(million pounds)	(million pounds)	(percent)
January	8,871	8,950	2,062	2,056	18,293	18,401	0.6
February	8,888	8,955	1,961	1,900	17,432	17,011	-2.4
March	8,892	8,976	2,121	2,125	18,861	19,075	1.1
April	8,890	8,998	2,059	2,069	18,305	18,618	1.7
May	8,886	9,026	2,118	2,135	18,821	19,273	2.4
June	8,878	9,032	2,012	2,045	17,861	18,470	3.4
July	8,886	9,068	2,045	2,090	18,175	18,951	4.3
August	8,903	9,108	2,040	2,065	18,164	18,812	3.6
September	8,911	9,145	1,969	1,995	17,544	18,245	4.0
October	8,927	9,132	2,019	2,049	18,025	18,716	3.8
November	8,919	9,133	1,936	1,979	17,270	18,078	4.7
December	8,916		2,018		17,996		
Annual	8,897		24,362		216,747		

¹ Includes dry cows. Excludes heifers not yet fresh.

² Excludes milk sucked by calves.

Estimated Milk Cows and Production by Month – United States: 2024-2025

[May not add due to rounding. Blank data cells indicate estimation period has not yet begun]

Month	Milk cows ¹		Milk per cow ²		Milk production ²		
	2024	2025	2024	2025	2024	2025	Change from 2024
	(1,000 head)	(1,000 head)	(pounds)	(pounds)	(million pounds)	(million pounds)	(percent)
January	9,324	9,390	2,047	2,042	19,083	19,173	0.5
February	9,343	9,395	1,946	1,887	18,185	17,726	-2.5
March	9,347	9,417	2,105	2,110	19,675	19,874	1.0
April	9,336	9,436	2,044	2,055	19,082	19,390	1.6
May	9,331	9,466	2,103	2,120	19,624	20,071	2.3
June	9,323	9,472	1,998	2,031	18,627	19,236	3.3
July	9,326	9,499	2,029	2,073	18,918	19,688	4.1
August	9,344	9,541	2,023	2,048	18,906	19,543	3.4
September	9,353	9,581	1,952	1,978	18,261	18,956	3.8
October	9,367	9,570	2,004	2,033	18,775	19,455	3.6
November	9,359	9,570	1,922	1,963	17,988	18,790	4.5
December	9,355		2,004		18,744		
Annual	9,342		24,178		225,868		

¹ Includes dry cows. Excludes heifers not yet fresh.

² Excludes milk sucked by calves.

Milk Cows and Production – 24 Selected States: November 2024 and 2025

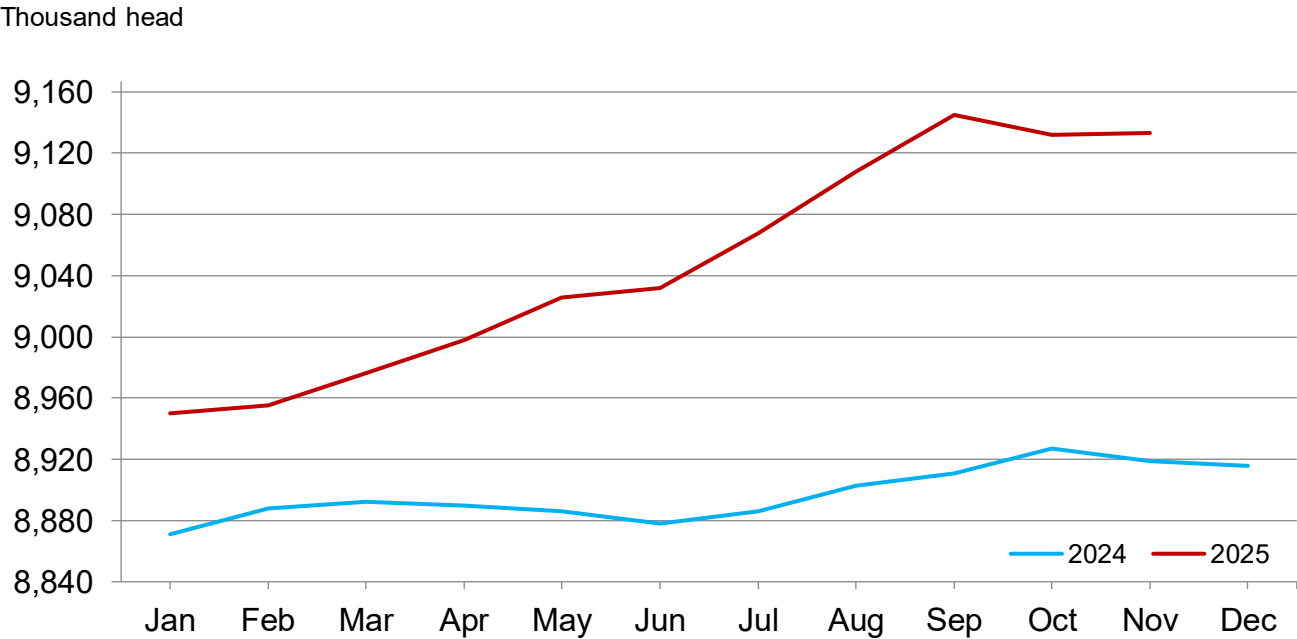
[May not add due to rounding]

State	Milk cows ¹		Milk per cow ²		Milk production ²		
	2024	2025	2024	2025	2024	2025	Change from 2024
	(1,000 head)	(1,000 head)	(pounds)	(pounds)	(million pounds)	(million pounds)	(percent)
Arizona	189	195	1,955	1,955	369	381	3.3
California	1,709	1,711	1,755	1,935	2,999	3,311	10.4
Colorado	204	211	2,105	2,100	429	443	3.3
Florida	96	99	1,615	1,670	155	165	6.5
Georgia	85	89	1,890	1,945	161	173	7.5
Idaho	680	720	2,045	2,040	1,391	1,469	5.6
Illinois	77	77	1,740	1,750	134	135	0.7
Indiana	190	194	1,950	1,970	371	382	3.0
Iowa	244	246	1,995	2,000	487	492	1.0
Kansas	180	225	1,940	1,960	349	441	26.4
Michigan	440	459	2,235	2,240	983	1,028	4.6
Minnesota	442	455	1,890	1,910	835	869	4.1
New Mexico	240	233	1,960	1,960	470	457	-2.8
New York	630	649	2,065	2,070	1,301	1,343	3.2
Ohio	251	254	1,830	1,835	459	466	1.5
Oregon	116	121	1,680	1,680	195	203	4.1
Pennsylvania	465	460	1,690	1,690	786	777	-1.1
South Dakota	215	237	1,900	1,910	409	453	10.8
Texas	675	703	2,110	2,125	1,424	1,494	4.9
Utah	91	98	1,870	1,875	170	184	8.2
Vermont	113	115	1,770	1,770	200	204	2.0
Virginia	66	66	1,690	1,685	112	111	-0.9
Washington	255	236	1,905	1,925	486	454	-6.6
Wisconsin	1,266	1,280	2,050	2,065	2,595	2,643	1.8
24-State Total	8,919	9,133	1,936	1,979	17,270	18,078	4.7

¹ Includes dry cows. Excludes heifers not yet fresh.

² Excludes milk sucked by calves.

Monthly Milk Cows - 24 Selected States



Milk Cows and Production – 24 Selected States: October 2024 and 2025

[May not add due to rounding]

State	Milk cows ¹		Milk per cow ²		Milk production ²		Change from 2024
	2024	2025	2024	2025	2024	2025	
	(1,000 head)	(1,000 head)	(pounds)	(pounds)	(million pounds)	(million pounds)	(percent)
Arizona	190	197	1,960	1,945	372	383	3.0
California	1,709	1,713	1,870	1,990	3,196	3,409	6.7
Colorado	206	211	2,185	2,175	450	459	2.0
Florida	98	99	1,570	1,660	154	164	6.5
Georgia	85	89	1,930	1,980	164	176	7.3
Idaho	676	720	2,145	2,140	1,450	1,541	6.3
Illinois	77	77	1,780	1,780	137	137	-
Indiana	189	194	1,990	2,010	376	390	3.7
Iowa	244	246	2,080	2,080	508	512	0.8
Kansas	181	221	2,005	2,020	363	446	22.9
Michigan	439	459	2,330	2,330	1,023	1,069	4.5
Minnesota	442	455	1,965	1,990	869	905	4.1
New Mexico	242	235	2,055	2,020	497	475	-4.4
New York	630	648	2,130	2,155	1,342	1,396	4.0
Ohio	251	254	1,880	1,885	472	479	1.5
Oregon	118	121	1,760	1,770	208	214	2.9
Pennsylvania	465	460	1,725	1,735	802	798	-0.5
South Dakota	215	235	1,990	2,000	428	470	9.8
Texas	675	701	2,225	2,205	1,502	1,546	2.9
Utah	91	98	1,935	1,945	176	191	8.5
Vermont	113	116	1,840	1,840	208	213	2.4
Virginia	66	67	1,705	1,705	113	114	0.9
Washington	259	236	2,000	2,020	518	477	-7.9
Wisconsin	1,266	1,280	2,130	2,150	2,697	2,752	2.0
24-State Total	8,927	9,132	2,019	2,049	18,025	18,716	3.8

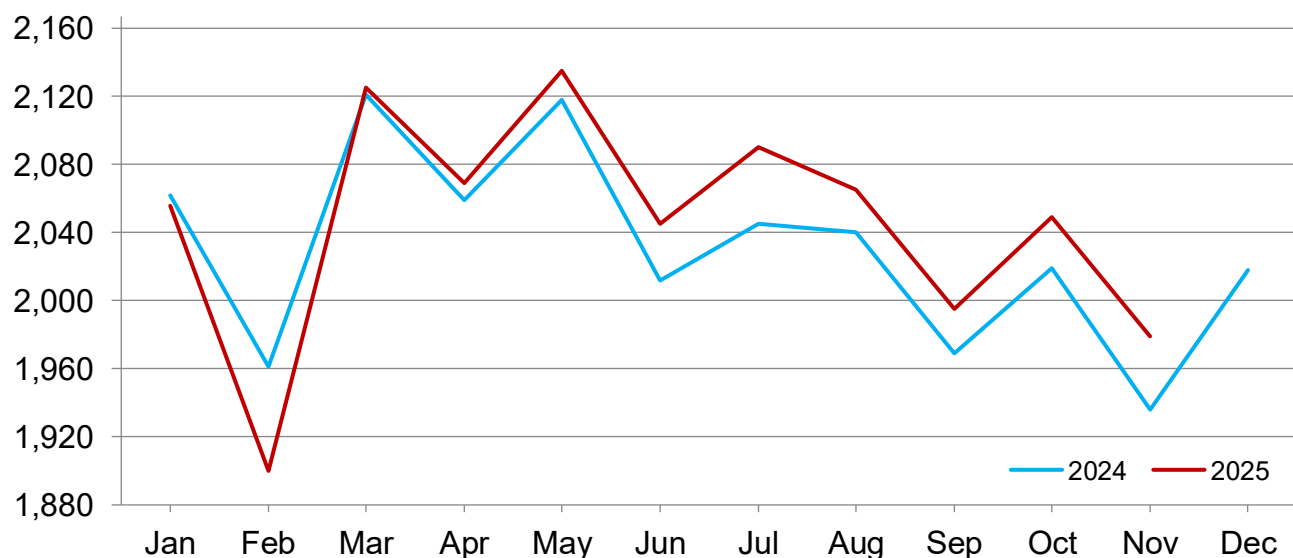
- Represents zero.

¹ Includes dry cows. Excludes heifers not yet fresh.

² Excludes milk sucked by calves.

Monthly Milk Per Cow - 24 Selected States

Pounds



Statistical Methodology

Survey Procedures: Primary data used to determine these estimates were obtained from a sample of producers. Individual States maintain a list of all known milk producers and information on the size of their herd. States use all known sources of producers to ensure that their lists are as complete as possible. Generally, all large producers and a sample of small producers are included in the survey. Questionnaires are mailed to producers near the end of the month to obtain data for the first day of the month. Additional reports are obtained by telephone, as needed, to supplement the mail response. Where feasible, States utilize state and federal administrative data to estimate milk production. This eliminates duplication of data gathering by different government agencies such as Agricultural Marketing Service (AMS) Dairy Market News. Indications of milk cow inventory are also obtained in the January Cattle Survey.

Estimation Procedures: Regional Field Offices prepare these estimates by using a combination of survey indications, historic trends, and any available administrative data. Individual State estimates are reviewed by the Agricultural Statistics Board for reasonableness.

Revision Policy: Milk production, milk per cow, and number of milk cows are subject to revision the following month after initial publication for monthly States or the following quarter for the quarterly States. Normally, administrative data from Federal Market Orders, State Departments of Agriculture, or other sources are the main basis for revisions. However, administrative data for all States may not be available in time for these revisions. Estimates are again subject to revisions in February each year based on additional administrative data. In the event that additional changes are necessary, a third revision is possible in February the following year. Estimates are again reviewed after data from the five-year Census of Agriculture are available. No revisions are made after that date.

Reliability: Since all operations with dairy animals are not included in the sample, survey estimates are subject to sampling variability. Survey results are also subject to non-sampling errors such as omissions, duplications, and mistakes in reporting, recording, and processing the data. The effects of these errors cannot be measured directly. They are minimized through rigid quality controls in the data collection process and through a careful review of all reported data for consistency and reasonableness.

To assist users in evaluating the reliability of the estimates in this report, the "Root Mean Square Error" is shown for selected items in the table below. The "Root Mean Square Error" is a statistical measure based on past performance and is computed using the differences between first and final estimates. The "Root Mean Square Error" for the 24 State milk production estimates over the past 24 months is 0.4 percent. This means that chances are 2 out of 3 that the final estimate will not be above or below the current estimate of 18.1 billion pounds by more than 0.4 percent. Chances are 9 out of 10 that the difference will not exceed 0.6 percent.

Reliability of Monthly Milk Production Estimates

[Based on data for the past 24 months]

Item	Root mean square error	90 percent confidence level	Difference between first and latest estimate				
			Average	Smallest	Largest	Months	
						Below latest	Above latest
	(percent)	(percent)	(1,000)	(1,000)	(1,000)	(number)	(number)
Milk production	0.4	0.6	53	0	139	15	8
All Milk cows	0.2	0.3	12	1	33	15	9

Information Contacts

Listed below are the commodity specialists in the Livestock Branch of the National Agricultural Statistics Service to contact for additional information. E-mail inquiries may be sent to nass@usda.gov.

Travis Averill, Chief, Livestock Branch	(202) 692-0069
Sherry Bertramsen – Livestock Slaughter.....	(202) 690-8632
Tiffany Byrne – Dairy Products	(651) 440-7789
Ryan Cowen – Cattle, Cattle on Feed.....	(202) 720-3040
Kim DaPra – Milk Production.....	(202) 720-3278
Fatema Haque – Poultry Slaughter, Turkey Hatchery, Turkeys Raised.....	(202) 720-3244
Derron Martin – Catfish, Census of Aquaculture, Egg Products, Mink, Trout	(202) 690-3237
Ralph Mondesir – Hogs and Pigs	(202) 720-3106
Suzanne Richards – Cost of Pollination, Honey, Honey Bee Colonies, Sheep and Goats	(202) 720-4448
Shulonda Shaw – Capacity of Refrigerated Warehouses, Cold Storage	(202) 720-3240
Autumn Stone – Layers, Eggs	(202) 690-3676
Takiyah Walker – Broiler Hatchery, Chicken Hatchery.....	(202) 720-6147

Access to NASS Reports

For your convenience, you may access NASS reports and products the following ways:

- All reports are available electronically, at no cost, on the NASS web site: www.nass.usda.gov.
- The national specific reports are available via a free e-mail subscription. To set-up this free subscription, visit www.nass.usda.gov and click on “National” in upper right corner above “search” box to create an account and select the reports you would like to receive.
- Economics, Statistics, and Market Information (ESMIS) – National Agricultural Library (NAL) website houses NASS’s and other agency archived reports at <https://esmis.nal.usda.gov>. All email subscriptions containing reports will be sent from <https://esmis.nal.usda.gov>. To receive the reports via e-mail, you will have to go to the website, create a new account and subscribe to the reports. You should whitelist notifications@esmis.nal.usda.gov in your email client to avoid the emails going into spam/junk folders.

For more information on NASS surveys and reports, call the NASS Agricultural Statistics Hotline at (800) 727-9540, 7:30 a.m. to 4:00 p.m. ET, or e-mail: nass@usda.gov.

If you have specific questions you would like an expert to respond to, please visit our “Ask A Specialist” website at www.nass.usda.gov/Contact_Us/Ask_a_Specialist.

In accordance with Federal civil rights law and U.S. Department of Agriculture (USDA) civil rights regulations and policies, the USDA, its Agencies, offices, and employees, and institutions participating in or administering USDA programs are prohibited from discriminating based on race, color, national origin, religion, sex, disability, age, marital status, family/parental status, income derived from a public assistance program, political beliefs, or reprisal or retaliation for prior civil rights activity, in any program or activity conducted or funded by USDA (not all bases apply to all programs). Remedies and complaint filing deadlines vary by program or incident.

Persons with disabilities who require alternative means of communication for program information (e.g., Braille, large print, audiotape, American Sign Language, etc.) should contact the responsible Agency or USDA's TARGET Center at (202) 720-2600 (voice and TTY) or contact USDA through the Federal Relay Service at (800) 877-8339. Additionally, program information may be made available in languages other than English.

To file a program discrimination complaint, complete the USDA Program Discrimination Complaint Form, AD-3027, found online at [How to File a Program Discrimination Complaint](#) and at any USDA office or write a letter addressed to USDA and provide in the letter all of the information requested in the form. To request a copy of the complaint form, call (866) 632-9992. Submit your completed form or letter to USDA by: (1) mail: U.S. Department of Agriculture, Office of the Assistant Secretary for Civil Rights, 1400 Independence Avenue, SW, Washington, D.C. 20250-9410; (2) fax: (202) 690-7442; or (3) email: program.intake@usda.gov.

USDA is an equal opportunity provider, employer, and lender.



U.S. DEPARTMENT OF AGRICULTURE

Save the Date
USDA's 102nd Annual
Agricultural *Hybrid*
Outlook Forum
February 19-20, 2026
Crystal Gateway Marriott, Arlington VA

