



Cattle on Feed

ISSN: 1948-9080

Released November 21, 2025, by the National Agricultural Statistics Service (NASS), Agricultural Statistics Board, United States Department of Agriculture (USDA).

United States Cattle on Feed Down 2 Percent

Cattle and calves on feed for the slaughter market in the United States for feedlots with capacity of 1,000 or more head totaled 11.7 million head on November 1, 2025. The inventory was 2 percent below November 1, 2024.

Placements in feedlots during October totaled 2.04 million head, 10 percent below 2024. Net placements were 1.99 million head. Placements were the lowest for October since the series began in 1996. During October, placements of cattle and calves weighing less than 600 pounds were 515,000 head, 600-699 pounds were 420,000 head, 700-799 pounds were 445,000 head, 800-899 pounds were 384,000 head, 900-999 pounds were 195,000 head, and 1,000 pounds and greater were 80,000 head.

Marketings of fed cattle during October totaled 1.70 million head, 8 percent below 2024.

Other disappearance totaled 54,000 head during October, 2 percent below 2024.

Cattle on Feed Inventory, Placements, Marketings, and Other Disappearance on 1,000+ Capacity Feedlots – United States: November 1, 2024 and 2025

Item	2024	2025	Percent of previous year
	(1,000 head)	(1,000 head)	(percent)
On feed October 1	11,600	11,418	98
Placed on feed during October	2,266	2,039	90
Fed cattle marketed during October	1,845	1,697	92
Other disappearance during October	55	54	98
On feed November 1	11,966	11,706	98

Cattle on Feed Inventory, Placements, Marketings, and Other Disappearance on 1,000+ Capacity Feedlots – United States: October 1, 2024 and 2025

Item	2024	2025	Percent of previous year
	(1,000 head)	(1,000 head)	(percent)
On feed September 1	11,198	11,080	99
Placed on feed during September	2,156	2,021	94
Fed cattle marketed during September	1,698	1,632	96
Other disappearance during September	56	51	91
On feed October 1	11,600	11,418	98

Cattle on Feed by Class on 1,000+ Capacity Feedlots – United States: October 1, 2024 and 2025

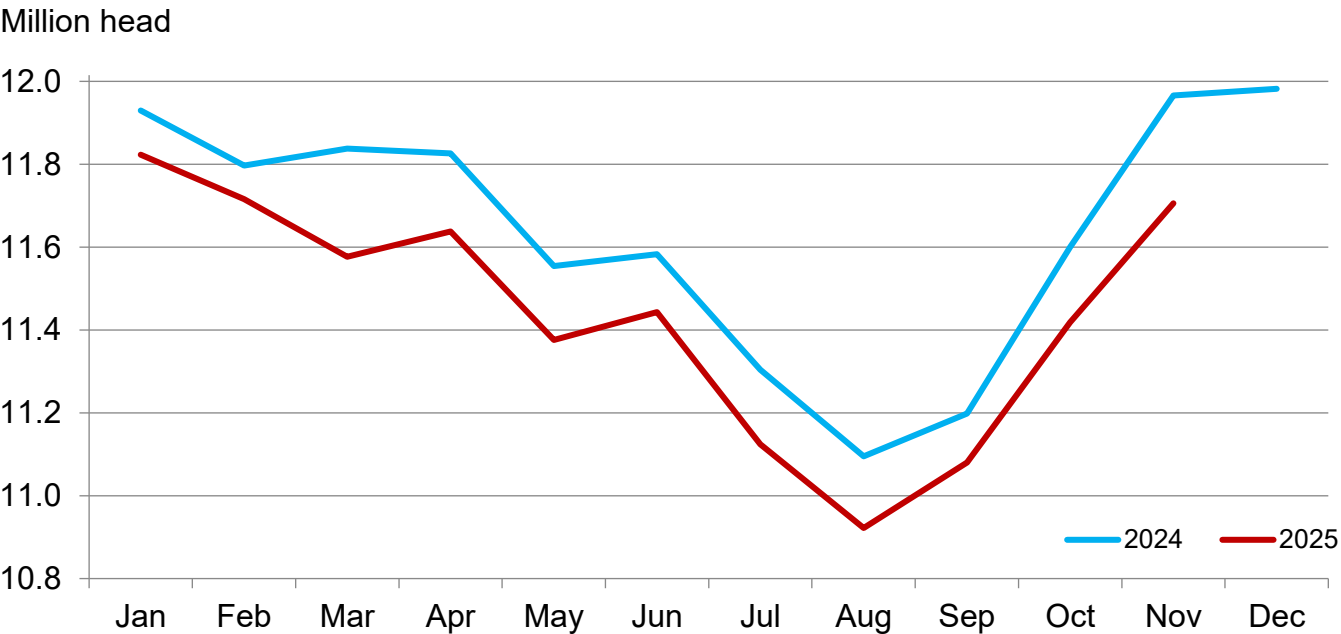
Item	2024	2025	Percent of	
			previous year	inventory
	(1,000 head)	(1,000 head)	(percent)	(percent)
Class on feed October 1				
Steers and steer calves	7,000	7,063	101	62
Heifers and heifer calves	4,600	4,355	95	38

Cattle on Feed Inventory on 1,000+ Capacity Feedlots by Month – States and United States: 2024 and 2025

State	November 1, 2024	October 1, 2025	November 1, 2025		
			Inventory	Percent of previous year	Percent of previous month
	(1,000 head)	(1,000 head)	(1,000 head)	(percent)	(percent)
Arizona	231	213	211	91	99
California	515	480	485	94	101
Colorado	1,060	920	920	87	100
Idaho	330	345	345	105	100
Iowa	670	690	700	104	101
Kansas	2,410	2,410	2,460	102	102
Minnesota	105	(NA)	(NA)	(NA)	(NA)
Nebraska	2,580	2,560	2,640	102	103
Oklahoma	365	320	335	92	105
South Dakota	225	200	235	104	118
Texas	2,880	2,570	2,630	91	102
Washington	270	280	295	109	105
Other States	325	430	450	138	105
United States	11,966	11,418	11,706	98	103

(NA) Not available.

Cattle on Feed Inventory on 1,000+ Capacity Feedlots – United States

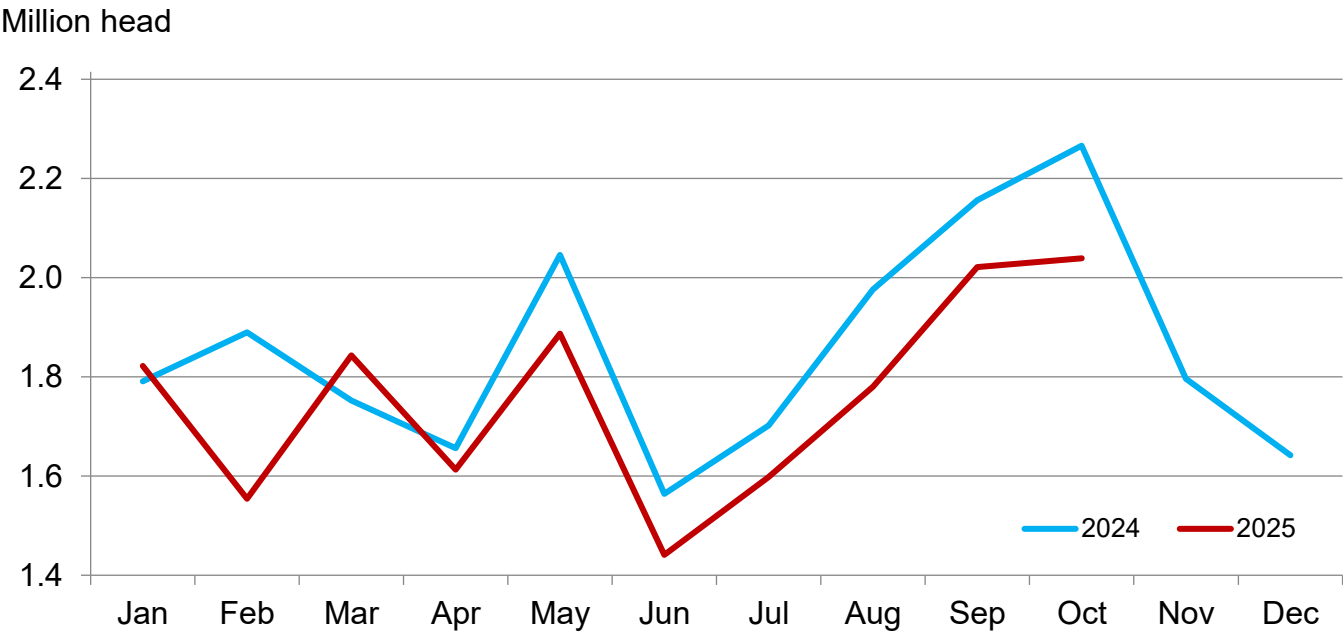


**Cattle Placed on Feed on 1,000+ Capacity Feedlots by Month – States and United States:
2024 and 2025**

State	During October 2024	During September 2025	During October 2025		
			Placements	Percent of previous year	Percent of previous month
	(1,000 head)	(1,000 head)	(1,000 head)	(percent)	(percent)
Arizona	21	13	16	76	123
California	57	66	62	109	94
Colorado	210	155	135	64	87
Idaho	50	62	53	106	85
Iowa	95	76	96	101	126
Kansas	480	465	455	95	98
Minnesota	22	(NA)	(NA)	(NA)	(NA)
Nebraska	615	585	560	91	96
Oklahoma	66	46	62	94	135
South Dakota	70	40	68	97	170
Texas	470	390	410	87	105
Washington	50	49	49	98	100
Other States	60	74	73	122	99
United States	2,266	2,021	2,039	90	101

(NA) Not available.

**Cattle Placed on 1,000+ Capacity
Feedlots – United States**



Cattle Placed on Feed by Weight Group on 1,000+ Capacity Feedlots and Month – States and United States: 2024 and 2025

State	During October 2024							
	Under 600 lbs	600-699 lbs	700-799 lbs	800-899 lbs	900+ lbs ¹	900-999 lbs	1,000+ lbs	Total
	(1,000 head)	(1,000 head)	(1,000 head)	(1,000 head)	(1,000 head)	(1,000 head)	(1,000 head)	(1,000 head)
Colorado	40	40	45	50	35	(D)	(D)	210
Kansas	75	105	140	105	55	(D)	(D)	480
Nebraska	130	115	105	135	130	(D)	(D)	615
Texas	170	115	115	55	15	(D)	(D)	470
Other States ...	165	105	80	86	55	(D)	(D)	491
United States ..	580	480	485	431	(X)	210	80	2,266

State	During September 2025							
	Under 600 lbs	600-699 lbs	700-799 lbs	800-899 lbs	900+ lbs ¹	900-999 lbs	1,000+ lbs	Total
	(1,000 head)	(1,000 head)	(1,000 head)	(1,000 head)	(1,000 head)	(1,000 head)	(1,000 head)	(1,000 head)
Colorado	25	20	30	45	35	(D)	(D)	155
Kansas	60	85	140	115	65	(D)	(D)	465
Nebraska	60	60	100	175	190	(D)	(D)	585
Texas	145	100	90	45	10	(D)	(D)	390
Other States ...	115	45	75	106	85	(D)	(D)	426
United States ..	405	310	435	486	(X)	285	100	2,021

State	During October 2025							
	Under 600 lbs	600-699 lbs	700-799 lbs	800-899 lbs	900+ lbs ¹	900-999 lbs	1,000+ lbs	Total
	(1,000 head)	(1,000 head)	(1,000 head)	(1,000 head)	(1,000 head)	(1,000 head)	(1,000 head)	(1,000 head)
Colorado	30	25	25	30	25	(D)	(D)	135
Kansas	70	95	140	95	55	(D)	(D)	455
Nebraska	115	105	95	120	125	(D)	(D)	560
Texas	140	95	105	55	15	(D)	(D)	410
Other States ...	160	100	80	84	55	(D)	(D)	479
United States ..	515	420	445	384	(X)	195	80	2,039

(D) Withheld to avoid disclosing data for individual operations.

(X) Not applicable.

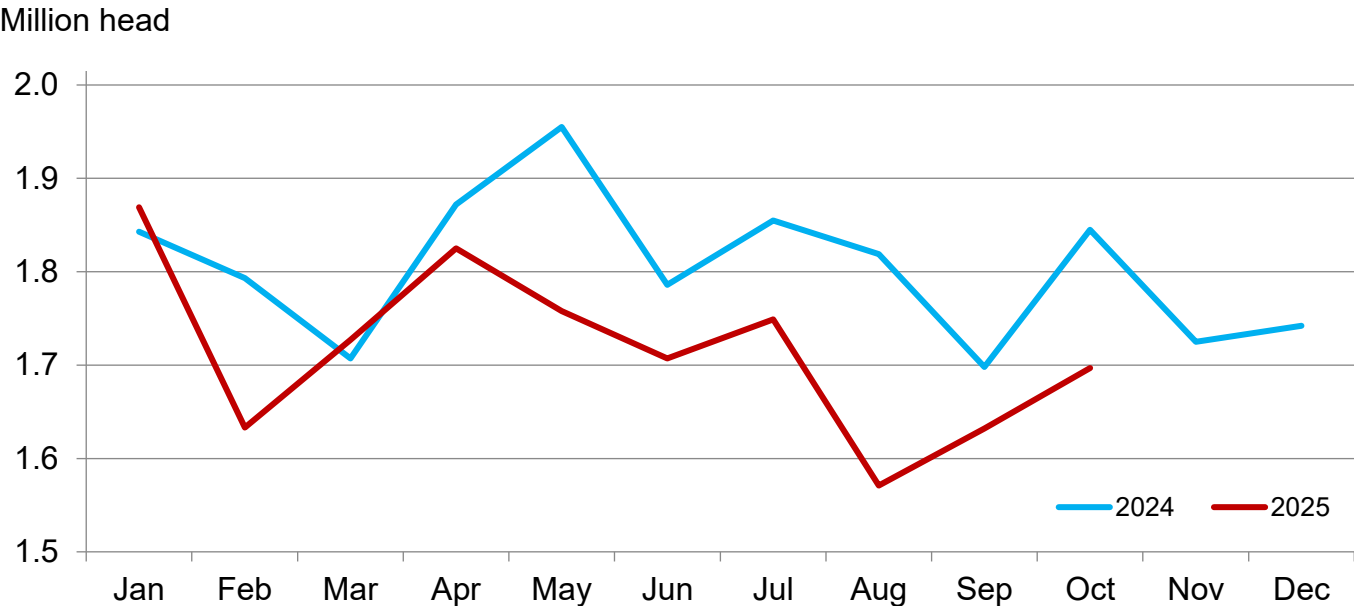
¹ The 900 pounds and greater weight group is the sum of 900-999 pounds and 1,000 pounds and greater weight groups.

Cattle Marketed on 1,000+ Capacity Feedlots by Month – States and United States: 2024 and 2025

State	During October 2024	During September 2025	During October 2025		
			Marketings	Percent of previous year	Percent of previous month
	(1,000 head)	(1,000 head)	(1,000 head)	(percent)	(percent)
Arizona	19	19	17	89	89
California	51	55	51	100	93
Colorado	145	120	130	90	108
Idaho	48	46	52	108	113
Iowa	84	74	85	101	115
Kansas	430	395	395	92	100
Minnesota	16	(NA)	(NA)	(NA)	(NA)
Nebraska	495	445	470	95	106
Oklahoma	45	40	46	102	115
South Dakota	39	34	32	82	94
Texas	395	310	335	85	108
Washington	34	33	33	97	100
Other States	44	61	51	116	84
United States	1,845	1,632	1,697	92	104

(NA) Not available.

Cattle Marketed on 1,000+ Capacity Feedlots – United States



Cattle Other Disappearance on 1,000+ Capacity Feedlots by Month – States and United States: 2024 and 2025

State	During October 2024	During September 2025	During October 2025		
			Other disappearance	Percent of previous year	Percent of previous month
	(1,000 head)	(1,000 head)	(1,000 head)	(percent)	(percent)
Arizona	1	1	1	100	100
California	6	6	6	100	100
Colorado	5	5	5	100	100
Idaho	2	1	1	50	100
Iowa	1	2	1	100	50
Kansas	10	10	10	100	100
Minnesota	1	(NA)	(NA)	(NA)	(NA)
Nebraska	10	10	10	100	100
Oklahoma	1	1	1	100	100
South Dakota	1	1	1	100	100
Texas	15	10	15	100	150
Washington	1	1	1	100	100
Other States	1	3	2	200	67
United States	55	51	54	98	106

(NA) Not available.

**Cattle on Feed by Class on 1,000+ Capacity Feedlots by Quarter – States and United States:
2024 and 2025**

State	Steers and steer calves			Heifers and heifer calves		
	Oct 1, 2024	Jul 1, 2025	Oct 1, 2025	Oct 1, 2024	Jul 1, 2025	Oct 1, 2025
	(1,000 Head)	(1,000 Head)	(1,000 Head)	(1,000 Head)	(1,000 Head)	(1,000 Head)
Arizona	220	219	198	10	10	15
California	420	400	390	95	85	90
Colorado	525	460	485	475	440	435
Idaho	175	180	195	155	150	150
Iowa	510	550	550	150	140	140
Kansas	1,340	1,320	1,460	1,030	950	950
Minnesota	85	(NA)	(NA)	15	(NA)	(NA)
Nebraska	1,530	1,600	1,650	940	840	910
Oklahoma	190	180	180	155	140	140
South Dakota	110	125	115	85	80	85
Texas	1,560	1,405	1,400	1,260	1,165	1,170
Washington	135	140	145	120	115	135
Other States	200	305	295	110	125	135
United States	7,000	6,884	7,063	4,600	4,240	4,355

(NA) Not available.

Terms and Definitions of Cattle on Feed Estimates

Cattle on feed are steers and heifers being fed a ration of grain, silage, hay and/or protein supplement for slaughter market that are expected to produce a carcass that will grade select or better. It excludes cattle being "backgrounded only" for later sale as feeders or later placement in another feedlot.

Placements are steers and heifers put into a feedlot, fed a ration which will produce a carcass that will grade select or better, and are intended for the slaughter market.

Marketings are steers and heifers shipped out of feedlots to a slaughter market.

Other disappearance includes death loss, movement from feedlots to pasture, and shipments to other feedlots for further feeding.

Statistical Methodology

Survey Procedures: During January and July all known feedlots in the United States with capacity of 1,000 or more head are surveyed to provide data for cattle on feed estimates. During the other months, all known feedlots from 16 States are surveyed. The 16 States account for approximately 98 percent of the cattle on feed in feedlots with capacity of 1,000 or more head. Individual State estimates are published monthly for 11 of the 16 States. In 2025, data collected from the remaining 5 States are used to establish the "Other States" estimates. These 5 States include Illinois, New Mexico, Oregon, Wyoming and in 2025, Minnesota was added. The "Other States" category represents all cattle on feed with a capacity of 1,000 or more head for the rest of the United States.

Estimating Procedures: These cattle on feed estimates were prepared by the Agricultural Statistics Board after reviewing recommendations and analysis submitted by Regional Field Offices. Regional and State survey data were reviewed for reasonableness with each other and with estimates from the previous month when establishing the current estimates.

Revision Policy: Revisions to previous estimates are made to improve month-to-month relationships. Estimates for the previous month are subject to revision in all States each month when current estimates are made. In February, all monthly estimates for the previous year, and the number of feedlots and annual marketings from two years ago are reviewed and subject to revisions. The reviews are primarily based on slaughter data, state check-off or brand data, and any other data that may have been received after the original estimate was made. Estimates will also be reviewed after data from the *Census of Agriculture* are available. No revisions will be made after that date and estimates become final.

Reliability: Since all 1,000+ capacity cattle on feed operators in every State are not included in the monthly survey, survey estimates are subject to sampling variability. Survey results are also subject to non-sampling errors such as omissions, duplications, and mistakes in reporting, recording, and processing the data. The effects of these errors cannot be measured directly. They are minimized through rigid quality controls in the data collection process and through a careful review of all reported data for consistency and reasonableness.

To assist users in evaluating the reliability of estimates in this report, the "**Root Mean Square Error**" is shown for selected items in the table on the following page. The "Root Mean Square Error" is a statistical measure based on past performance and is computed using the differences between first and latest estimates. The "Root Mean Square Error" for cattle on feed inventory estimates over the past 24 months is 0.1 percent. This means that chances are 2 out of 3 that the final estimate will not be above or below the current estimate of 11.7 million head by more than 0.1 percent. Chances are 9 out of 10 that the difference will not exceed 0.1 percent.

The table on the following page shows a 24-month record of the range of differences between first and latest estimates for selected items. Using estimates of number on feed as an example, changes between the first estimate and the latest estimate during the past 24 months have averaged 3,000 head, ranging from 0 to 25,000 head. During this period the initial estimate has been above the latest estimate 1 time and has been below the latest estimate 4 times. This does not imply that the initial estimate is likely to understate or overstate final inventory.

Reliability of Monthly Cattle on Feed Estimates

[Based on data for the past 24 months]

Item	Root mean square error	90 percent confidence level	Difference between first and latest estimate				
			Average	Smallest	Largest	Months	
						Below latest	Above latest
	(percent)	(percent)	(1,000)	(1,000)	(1,000)	(number)	(number)
On feed	0.1	0.1	3	0	25	4	1
Placements	0.2	0.4	2	0	20	5	4
Marketings	0.1	0.1	0	0	5	4	2

Information Contacts

Listed below are the commodity specialists in the Livestock Branch of the National Agricultural Statistics Service to contact for additional information. E-mail inquiries may be sent to nass@usda.gov.

Travis Averill, Chief, Livestock Branch	(202) 692-0069
Sherry Bertramsen – Livestock Slaughter	(202) 690-8632
Tiffany Byrne – Dairy Products	(651) 440-7789
Ryan Cowen – Cattle, Cattle on Feed	(202) 720-3040
Kim DaPra – Milk Production	(202) 720-3278
Fatema Haque – Poultry Slaughter, Turkey Hatchery, Turkeys Raised	(202) 720-3244
Derron Martin – Catfish, Census of Aquaculture, Egg Products, Mink, Trout	(202) 690-3237
Ralph Mondesir – Hogs and Pigs	(202) 720-3106
Suzanne Richards – Cost of Pollination, Honey, Honey Bee Colonies, Sheep and Goats	(202) 720-4448
Shulonda Shaw – Capacity of Refrigerated Warehouses, Cold Storage	(202) 720-3240
Autumn Stone – Layers, Eggs	(202) 690-3676
Takiyah Walker – Broiler Hatchery, Chicken Hatchery	(202) 720-6147

Access to NASS Reports

For your convenience, you may access NASS reports and products the following ways:

- All reports are available electronically, at no cost, on the NASS web site: www.nass.usda.gov.
- The national specific reports are available via a free e-mail subscription. To set-up this free subscription, visit www.nass.usda.gov and click on “National” in upper right corner above “search” box to create an account and select the reports you would like to receive.
- Economics, Statistics, and Market Information (ESMIS) – National Agricultural Library (NAL) website houses NASS’s and other agency archived reports at <https://esmis.nal.usda.gov>. All email subscriptions containing reports will be sent from <https://esmis.nal.usda.gov>. To receive the reports via e-mail, you will have to go to the website, create a new account and subscribe to the reports. You should whitelist notifications@esmis.nal.usda.gov in your email client to avoid the emails going into spam/junk folders.

For more information on NASS surveys and reports, call the NASS Agricultural Statistics Hotline at (800) 727-9540, 7:30 a.m. to 4:00 p.m. ET, or e-mail: nass@usda.gov.

If you have specific questions you would like an expert to respond to, please visit our “Ask A Specialist” website at www.nass.usda.gov/Contact_Us/Ask_a_Specialist.

In accordance with Federal civil rights law and U.S. Department of Agriculture (USDA) civil rights regulations and policies, the USDA, its Agencies, offices, and employees, and institutions participating in or administering USDA programs are prohibited from discriminating based on race, color, national origin, religion, sex, disability, age, marital status, family/parental status, income derived from a public assistance program, political beliefs, or reprisal or retaliation for prior civil rights activity, in any program or activity conducted or funded by USDA (not all bases apply to all programs). Remedies and complaint filing deadlines vary by program or incident.

Persons with disabilities who require alternative means of communication for program information (e.g., Braille, large print, audiotope, American Sign Language, etc.) should contact the responsible Agency or USDA's TARGET Center at (202) 720-2600 (voice and TTY) or contact USDA through the Federal Relay Service at (800) 877-8339. Additionally, program information may be made available in languages other than English.

To file a program discrimination complaint, complete the USDA Program Discrimination Complaint Form, AD-3027, found online at [How to File a Program Discrimination Complaint](#) and at any USDA office or write a letter addressed to USDA and provide in the letter all of the information requested in the form. To request a copy of the complaint form, call (866) 632-9992. Submit your completed form or letter to USDA by: (1) mail: U.S. Department of Agriculture, Office of the Assistant Secretary for Civil Rights, 1400 Independence Avenue, SW, Washington, D.C. 20250-9410; (2) fax: (202) 690-7442; or (3) email: program.intake@usda.gov.

USDA is an equal opportunity provider, employer, and lender.