

Receipts: This Week: 6,969 Week Ago: 20,741 Year Ago: 17,467

Compared to last week heavy offering, steer calves less than 600 lbs sold 20.00 higher, yearlings steers at 700 and 900 lbs sold steady to 5.00 lower with 8 weight steers 5.00 higher. Heifer calves less than 600 lbs sold 4.00 to 8.00 lower, yearling heifers at 700 lbs sold 6.00 lower with weights over 800 lbs 2.00 to 4.00 higher. Just starting to get in the swing of the bawling calf market across the reporting auction. Some farmers that have cow/calves like getting calves sold before fall harvest gets into full swing. Feedlot trade lives sales sold 2.00 lower from 236.00 to 238.00 and dressed sales sold 5.00 to 7.00 lower at mostly 370.00.

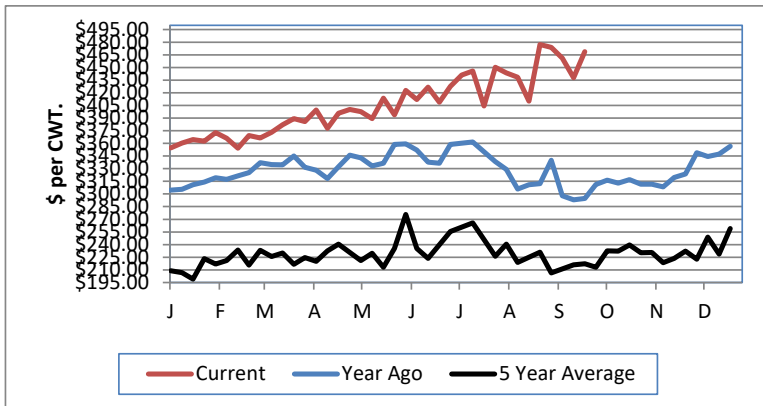
NEBRASKA WEEKLY FEEDER CATTLE AVERAGES

[Auction Summary](#)

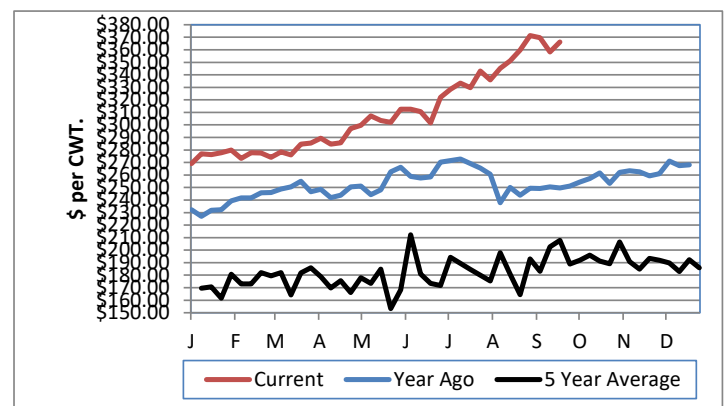
Feeder Steers:	This Week	Last Week	Year Ago
M&L 1			
400-500 lbs.	\$524.62	\$502.29	\$337.56
500-600 lbs.	\$468.88	\$437.84	\$304.49
600-700 lbs.	\$408.72	\$431.89	\$270.73
700-800 lbs.	\$381.36	\$386.15	\$244.64
800-900 lbs.	\$366.12	\$358.17	\$232.21
900-1000 lbs.	\$347.81	\$348.19	\$214.01

Feeder Heifers	This Week	Last Week	Year Ago
M&L 1			
400-500 lbs.	\$453.42	\$457.05	\$299.27
500-600 lbs.	\$398.23	\$410.77	\$277.15
600-700 lbs.	\$376.30	\$388.77	\$251.96
700-800 lbs.	\$352.69	\$358.74	\$225.19
800-900 lbs.	\$339.99	\$337.79	\$205.06
900-1000 lbs.	\$333.21	\$329.69	\$219.60

Weekly M&L 1 500-600 lb. Feeder Steer Price



Weekly M&L 1 800-900 lb. Feeder Steer Price



Nebraska Weekly Hay Prices

[Weekly Hay Report](#)

	Squares	Rounds
<b>Alfalfa</b>		
Premium	170.00-180.00	
Fair to Good	100.00-120.00	70.00-85.00
<b>Pellets</b>		
Pellets	240.00-330.00	
<b>Grass</b>		
Premium		
Good		85.00-100.00
Fair	90	
<b>Ground &amp; Delivered Alfalfa</b>		130.00-140.00
<b>Ground &amp; Delivered Cornstalks</b>		100.00

Nebraska Weekly Grain Prices

[Omaha-Council Bluffs - Changed to IA -Terminal Elevator - Southwest](#)

US NO 2 YELLOW CORN	\$3.93 - \$4.01
US NO 1 SOYBEANS	\$9.66 - \$9.90

Nebraska Ethanol Co-Products

<a href="#">DDGS Report</a>	Price
DDG	135.00-160.00
Modified Wet	60.00-69.00
Wet	35.00-40.00

Nebraska Weekly Weighted Average Cattle Report

[AMS 2485](#)

	This Week	Last Week	Last Year
Live Str	236.45	239.47	184.19
Live Hfr	236.98	239.59	184.46
Dressed Str	370.22	375.80	290.56
Dressed Hfr	371.26	375.00	291.22

USDA Livestock, Poultry and Grain Market News  
Nebraska

Thomas Walthers, OIC  
Phone: (308) 390-5399  
Email: [Thomas.Walthers@usda.gov](mailto:Thomas.Walthers@usda.gov)  
[www.ams.usda.gov/lpsmarketnewspage](http://www.ams.usda.gov/lpsmarketnewspage)