

Receipts: This Week: 20,741 Week Ago: 9,623 Year Ago: 15,886

Compared to last week, steers and heifers less than 600 lbs lightly tested for a market comparison. Yearling steers over 700 lbs sold 10.00 lower. Yearling heifers from 700 to 900 lbs sold steady to 2.00 lower and over 900 lbs sold 6.00 lower. Demand was mostly good. First real test of the bawling calf market, so it is hard to compared bawlers to the weaned out fall calves the last few weeks. Yearling did go a little lower as the CME cattle boards traded lower to sharply lower through the week. Silage choppers in full swing with some feedlots getting ready for high moisture corn. Spotty rain showers across the state over the weekend. Feedlot traded live cattle 4.00 to 5.00 lower at 238.00 and dressed sales sold 8.00 lower at 375.00.

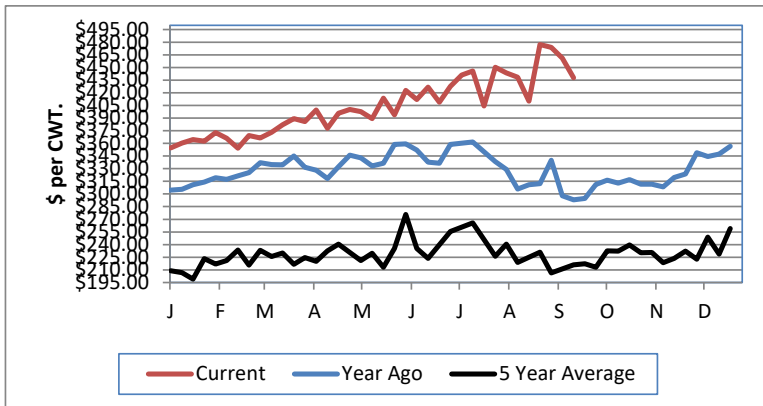
NEBRASKA WEEKLY FEEDER CATTLE AVERAGES

[Auction Summary](#)

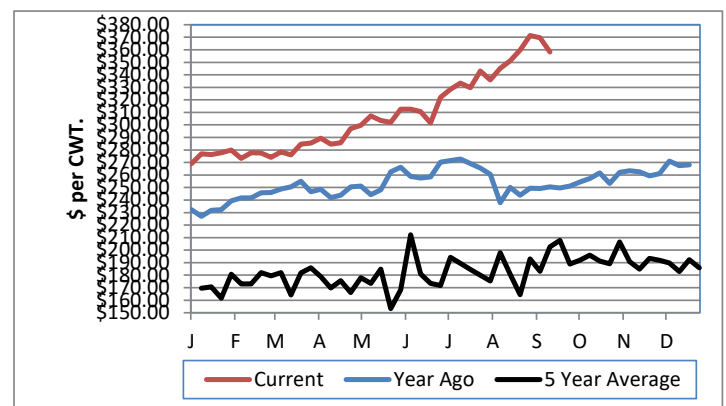
Feeder Steers:	This Week	Last Week	Year Ago
M&L 1			
400-500 lbs.	\$502.29	\$486.00	\$337.56
500-600 lbs.	\$437.84	\$461.13	\$304.49
600-700 lbs.	\$431.89	\$418.01	\$270.73
700-800 lbs.	\$386.15	\$396.74	\$244.64
800-900 lbs.	\$358.17	\$369.66	\$232.21
900-1000 lbs.	\$348.19	\$357.24	\$214.01

Feeder Heifers	This Week	Last Week	Year Ago
M&L 1			
400-500 lbs.	\$457.05	\$456.64	\$299.27
500-600 lbs.	\$410.77	\$410.24	\$277.15
600-700 lbs.	\$388.77	\$381.25	\$251.96
700-800 lbs.	\$358.74	\$356.80	\$225.19
800-900 lbs.	\$337.79	\$337.28	\$205.06
900-1000 lbs.	\$329.69	\$335.86	\$220.99

Weekly M&L 1 500-600 lb. Feeder Steer Price



Weekly M&L 1 800-900 lb. Feeder Steer Price



Nebraska Weekly Hay Prices

[Weekly Hay Report](#)

	Squares	Rounds
Alfalfa		
Premium	170.00-180.00	
Fair to Good	100.00-120.00	70.00-85.00
Pellets		
Pellets	240.00-330.00	
Grass		
Premium		
Good		85.00-100.00
Fair	90	
Ground & Delivered Alfalfa		130.00-140.00
Ground & Delivered Cornstalks		100.00

Nebraska Weekly Grain Prices

[Omaha-Council Bluffs - Changed to IA -Terminal Elevator - Southwest](#)

US NO 2 YELLOW CORN	\$3.90 - \$4.01
US NO 1 SOYBEANS	\$9.65 - \$9.86

Nebraska Ethanol Co-Products

DDGS Report	Price
DDG	130.00-160.00
Modified Wet	60.00-69.00
Wet	35.00-40.00

Nebraska Weekly Weighted Average Cattle Report

[AMS 2485](#)

	This Week	Last Week	Last Year
Live Str	239.47	242.58	181.91
Live Hfr	239.59	242.60	181.50
Dressed Str	375.80	383.31	290.81
Dressed Hfr	375.00	383.38	290.52

USDA Livestock, Poultry and Grain Market News

Nebraska

Thomas Walthers, OIC
 Phone: (308) 390-5399
 Email: Thomas.Walthers@usda.gov
www.ams.usda.gov/lpsmarketnewspage