

Receipts: This Week: 17,741 Week Ago: 6,969 Year Ago: 11,209

Compared to last week steers less than 500 lbs sold 7.00 lower, 5 weights sold 2.00 higher, 6 weight sold 10.00 higher. Yearlings over 700 lbs sold 5.00 to 10.00 higher. Heifers less than 600 lbs sold 6.00 to 10.00 higher over 600 lbs sold steady to 3.00 higher. Demand was good to instances very good for yearling feeders. Slowly getting into the bawling calf market across the state. Quite a few large strings of yearling hit the market at various auction. Feedlots continue to fill pits with silage and just getting started on high moisture corn. Some hay producers are on third or fourth cutting and a few grass hay producers are still trying to put up hay on the wet meadows and other grass fields. Feedlot sales slipped back again this week as packers are running slower chain speeds and not killing as many cattle. Live sales sold 3.00 to 4.00 lower and dressed sales 5.00 lower at 365.00.

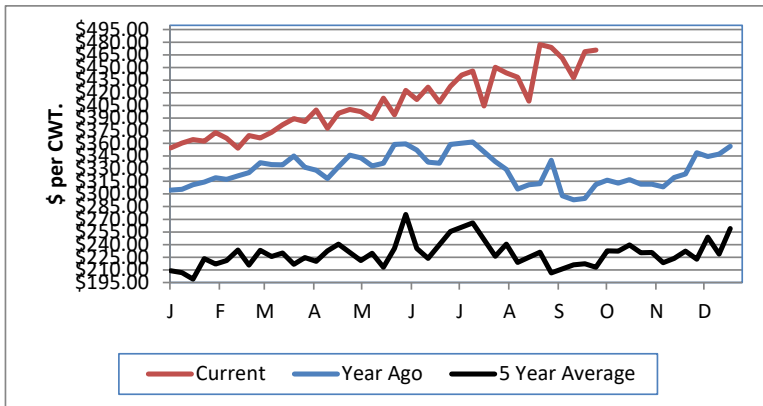
NEBRASKA WEEKLY FEEDER CATTLE AVERAGES

[Auction Summary](#)

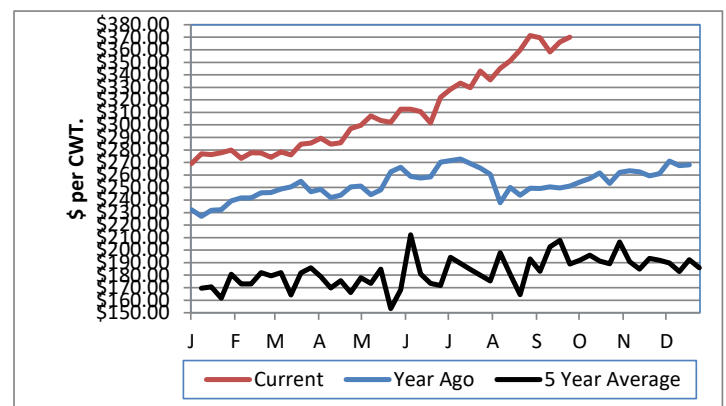
Feeder Steers:	This Week	Last Week	Year Ago
M&L 1			
400-500 lbs.	\$517.33	\$524.62	\$337.56
500-600 lbs.	\$470.58	\$468.88	\$304.49
600-700 lbs.	\$426.14	\$408.72	\$270.73
700-800 lbs.	\$391.62	\$381.36	\$244.64
800-900 lbs.	\$370.17	\$366.12	\$232.21
900-1000 lbs.	\$356.19	\$347.81	\$214.01

Feeder Heifers	This Week	Last Week	Year Ago
M&L 1			
400-500 lbs.	\$459.02	\$453.42	\$299.27
500-600 lbs.	\$418.20	\$398.23	\$277.15
600-700 lbs.	\$377.63	\$376.30	\$251.96
700-800 lbs.	\$355.58	\$352.69	\$225.19
800-900 lbs.	\$338.55	\$339.99	\$205.06
900-1000 lbs.	\$328.35	\$333.21	\$223.50

Weekly M&L 1 500-600 lb. Feeder Steer Price



Weekly M&L 1 800-900 lb. Feeder Steer Price



Nebraska Weekly Hay Prices

[Weekly Hay Report](#)

	Squares	Rounds
Alfalfa		
Premium	170.00-200.00	90.00
Fair to Good	100.00-140.00	
Pellets		
Pellets	240.00-330.00	
Grass		
Premium	8.00	
Good		85.00-100.00
Fair		
Ground & Delivered Alfalfa		130.00-140.00
Ground & Delivered Cornstalks		100.00

Nebraska Weekly Grain Prices

[Omaha-Council Bluffs - Changed to IA -Terminal Elevator - Southwest](#)

US NO 2 YELLOW CORN	\$3.92 - \$3.97
US NO 1 SOYBEANS	\$9.49 - \$9.54

Nebraska Ethanol Co-Products

DDGS Report	Price
DDG	135.00-168.00
Modified Wet	65.00-72.00
Wet	35.00-42.00

Nebraska Weekly Weighted Average Cattle Report

[AMS 2485](#)

	This Week	Last Week	Last Year
Live Str	232.59	236.45	186.74
Live Hfr	234.12	236.98	186.88
Dressed Str	364.96	370.72	293.60
Dressed Hfr	364.79	371.26	293.91

USDA Livestock, Poultry and Grain Market News

Nebraska

Thomas Walthers, OIC
 Phone: (308) 390-5399
 Email: Thomas.Walthers@usda.gov
www.ams.usda.gov/lpsmarketnewspage