

Receipts: This Week: 4,314 Week Ago: 7,196 Year Ago: 10,753

Compared to last week steers and heifers sold unevenly steady. Demand was good at the two reporting auctions. Couple different types of cattle on hand at the auctions. Wednesday's sale was yearlings coming off native grass and Saturday's receipts came mostly out of backgrounding lots. Flesh and weighing conditions were a little different but, it didn't deter buyers from purchasing. With feedlots tuning a hefty profit on slaughter steers and heifers buyers are very willing to jump back into the historic cattle market. Many buyers are more concerned there will not be enough feeder cattle to go around more than the cost of the cattle in today's market. With a bumper corn crop on the horizon many farmer/feeders are planning on walking their crop to town as they continue to purchase cattle to feed. Irrigated and dry land fields look very well with several areas of the state receiving over 20 inches of rain since the middle of May. Feedlot managers continue to be in the driver's seat and held firm on asking prices for their show-list. Live sales sold 2.00 to 5.00 higher from 245.00 to 247.00 and dressed sales sold 3.00 higher at 383.00 on negotiated prices.

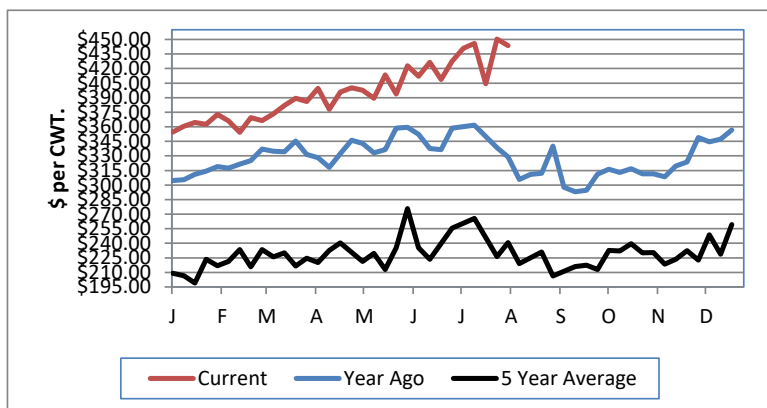
NEBRASKA WEEKLY FEEDER CATTLE AVERAGES

[Auction Summary](#)

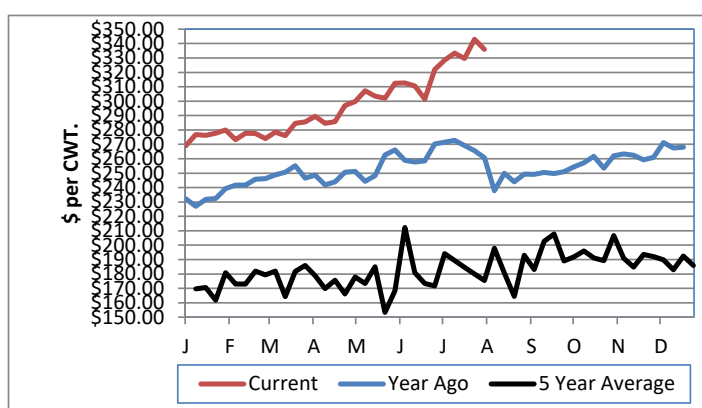
Feeder Steers: M&L 1	This Week	Last Week	Year Ago
400-500 lbs.	#N/A	#N/A	\$337.56
500-600 lbs.	\$443.64	\$450.40	\$304.49
600-700 lbs.	\$403.80	\$405.92	\$270.73
700-800 lbs.	\$364.97	\$365.47	\$244.64
800-900 lbs.	\$335.93	\$342.96	\$232.21
900-1000 lbs.	\$329.36	\$327.97	\$214.01

Feeder Heifers: M&L 1	This Week	Last Week	Year Ago
400-500 lbs.	\$458.13	\$413.44	\$299.27
500-600 lbs.	\$397.73	\$405.47	\$277.15
600-700 lbs.	\$368.52	\$362.02	\$251.96
700-800 lbs.	\$327.20	\$339.68	\$225.19
800-900 lbs.	\$314.51	\$308.67	\$205.06
900-1000 lbs.	\$301.59	\$277.62	\$228.30

Weekly M&L 1 500-600 lb. Feeder Steer Price



Weekly M&L 1 800-900 lb. Feeder Steer Price



Nebraska Weekly Hay Prices

[Weekly Hay Report](#)

	Squares	Rounds
Alfalfa		
Premium	170.00	
Good	120.00-150.00	100.00
	Pellets	
Pellets	240.00-330.00	
Grass		
Premium	SM 7.00-8.00	
Good		85.00-100.00
Fair		
Ground & Delivered Alfalfa		130.00-140.00
Ground & Delivered Cornstalks		100.00

Nebraska Weekly Grain Prices

[Omaha-Council Bluffs - Changed to IA -Terminal Elevator - Southwest](#)

US NO 2 YELLOW CORN	\$3.90 - \$3.98
US NO 1 SOYBEANS	\$9.54 - \$9.82

Nebraska Ethanol Co-Products

DDGS Report	Price
DDG	127.00-160.00
Modified Wet	50.00-85.00
Wet	35.00-40.00

Nebraska Weekly Weighted Average Cattle Report

[AMS 2485](#)

	This Week	Last Week	Last Year
Live Str	245.63	243.63	196.22
Live Hfr	245.74	242.73	196.00
Dressed Str	383.72	379.62	309.53
Dressed Hfr	383.65	380.23	309.60

USDA Livestock, Poultry and Grain Market News
Nebraska

Thomas Walthers, OIC
Phone: (308) 390-5399
Email: Thomas.Walthers@usda.gov
www.ams.usda.gov/lpsmarketnewspage