

Receipts: This Week: 3,584 Week Ago: 5,321 Year Ago: 3,034

Compared to last week steers over 800 lbs sold mostly 7.00 to 9.00 higher with 950 weight trading steady. Heifers over 750 lbs sold 6.00 higher. Demand was good for the short supply of cattle on hand. Crops look very good in many areas of the state with several dryland fields might produce close to irrigated acres as some areas have had over 20 inches of rain. Haying has been a struggle but there has been some dry hay baled in certain areas of the state. Negotiated cash feedlot trade ranged from 243.00 to 245.00 on a live basis and 380.00 to 385.00 on a dressed basis.

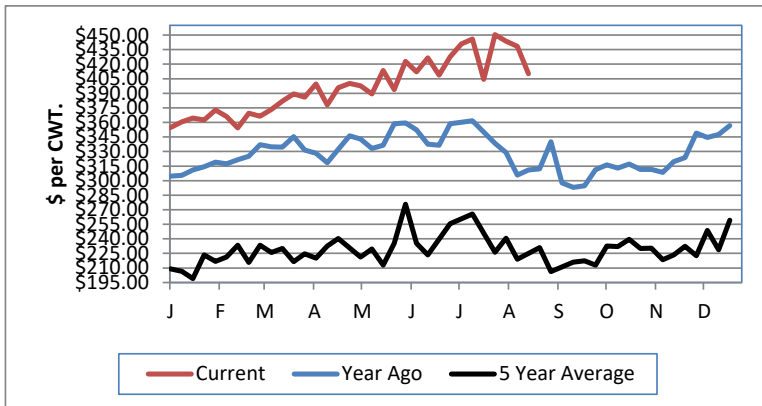
NEBRASKA WEEKLY FEEDER CATTLE AVERAGES

[Auction Summary](#)

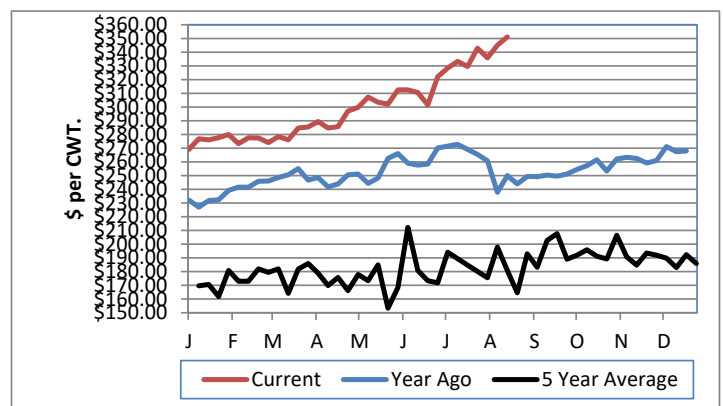
Feeder Steers: M&L 1	This Week	Last Week	Year Ago
400-500 lbs.	\$455.00	\$506.69	\$337.56
500-600 lbs.	\$410.00	\$438.48	\$304.49
600-700 lbs.	\$406.96	\$405.95	\$270.73
700-800 lbs.	\$370.54	\$375.72	\$244.64
800-900 lbs.	\$351.11	\$345.14	\$232.21
900-1000 lbs.	\$340.04	\$334.19	\$214.01

Feeder Heifers M&L 1	This Week	Last Week	Year Ago
400-500 lbs.	\$425.00	\$482.50	\$299.27
500-600 lbs.	\$393.85	\$410.00	\$277.15
600-700 lbs.	\$364.91	\$384.18	\$251.96
700-800 lbs.	\$338.02	\$327.90	\$225.19
800-900 lbs.	\$327.33	\$318.86	\$205.06
900-1000 lbs.	\$314.45	\$307.89	\$226.86

Weekly M&L 1 500-600 lb. Feeder Steer Price



Weekly M&L 1 800-900 lb. Feeder Steer Price



Nebraska Weekly Hay Prices

[Weekly Hay Report](#)

	Squares	Rounds
<b>Alfalfa</b>		
Premium	170.00	110.00
Fair to Good	150.00	80.00
<b>Pellets</b>		
Pellets	240.00-330.00	
<b>Grass</b>		
Premium	130.00	
Good		85.00-100.00
Fair		
Ground & Delivered Alfalfa		130.00-140.00
Ground & Delivered Cornstalks		100.00

Nebraska Weekly Grain Prices

[Omaha-Council Bluffs - Changed to IA -Terminal Elevator - Southwest](#)

US NO 2 YELLOW CORN	\$3.72 - \$3.85
US NO 1 SOYBEANS	\$9.66 - \$9.99

Nebraska Ethanol Co-Products

[DDGS Report](#)

	Price
DDG	125.00-160.00
Modified Wet	38.00-85.00
Wet	32.00-40.00

Nebraska Weekly Weighted Average Cattle Report

[AMS 2485](#)

	This Week	Last Week	Last Year
Live Str	244.01	244.93	189.78
Live Hfr	243.47	244.63	189.67
Dressed Str	383.18	381.20	298.22
Dressed Hfr	383.98	384.71	298.98

USDA Livestock, Poultry and Grain Market News  
Nebraska

Thomas Walthers, OIC  
Phone: (308) 390-5399  
Email: [Thomas.Walthers@usda.gov](mailto:Thomas.Walthers@usda.gov)  
[www.ams.usda.gov/lpsmarketnewspage](http://www.ams.usda.gov/lpsmarketnewspage)